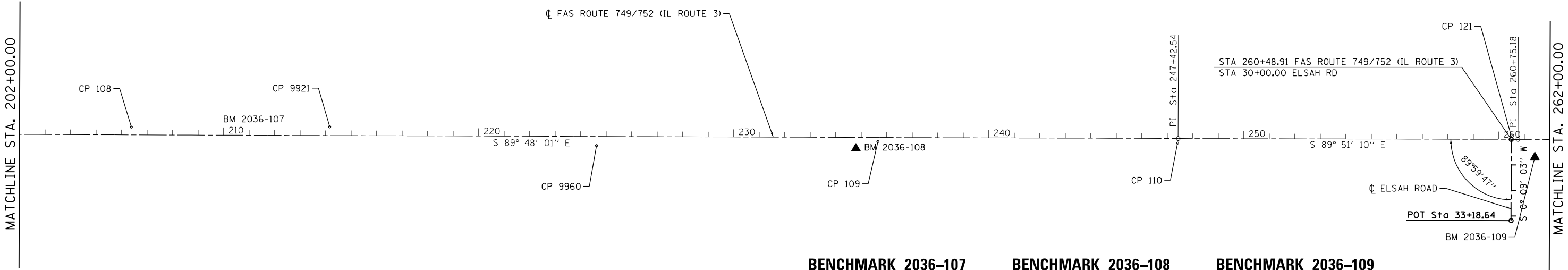




ALIGNMENT COORDINATES - IL RTE 3			
CONTROL POINT	STATION	COORDINATES	
		NORTHING	EASTING
P.I.	247+42.54	849634.0294	2237186.1864
P.I.	260+75.18	849630.6067	2238518.8214

ALIGNMENT COORDINATES - ELSAH ROAD			
CONTROL POINT	STATION	COORDINATES	
		NORTHING	EASTING
P.O.T	30+00.00	849630.6740	2238492.5550
P.O.T	33+18.64	849312.0360	2238491.7160



BENCHMARK 2036-107
EL. 652.53

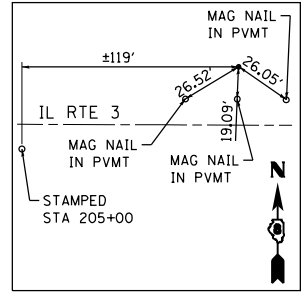
CUT "□" ON HEADWALL AT NORTH SIDE OF IL. 3, EAST SIDE OF FIELD ENTRANCE, ±0.40 MILES EAST OF 1060E AND IL. 3

BENCHMARK 2036-108
EL. 632.49

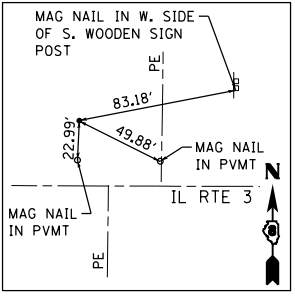
CUT "□" ON EAST END OF HEADWALL AT SOUTH SIDE OF IL. 3, ±0.45 MILES WEST OF ELSAH ROAD

BENCHMARK 2036-109
EL. 670.17

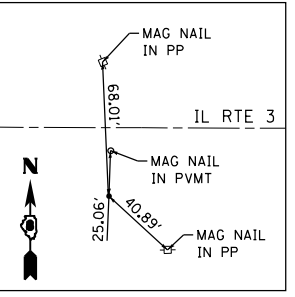
RAILROAD SPIKE IN POWER POLE, WITH LIGHT, AT SOUTHEAST CORNER OF IL. 3 AND ELSAH ROAD



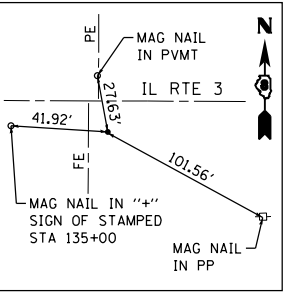
CONTROL POINT #108
IRON PIN WITH IDOT CAP
STA 206+38.45, 30.30' LT.
N 849678.6275
E 2233082.2246



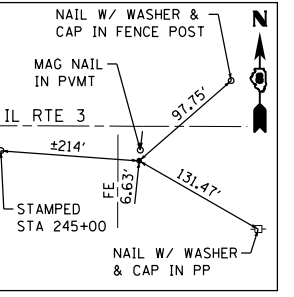
CONTROL POINT #9921
IRON PIN WITH IDOT CAP
STA 214+15.96, 33.96' LT.
N 849679.5790
E 2233859.7394



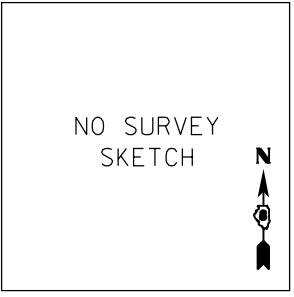
CONTROL POINT #9960
IRON PIN WITH IDOT CAP
STA 224+62.35, 35.68' RT.
N 849606.2940
E 2234905.8806



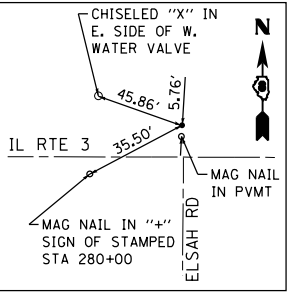
CONTROL POINT #109
IRON PIN WITH IDOT CAP
STA 235+65.64, 16.12' RT.
N 849622.0046
E 2236009.2336



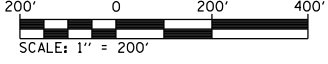
CONTROL POINT #110
IRON PIN WITH IDOT CAP
STA 247+40.53, 17.93' RT.
N 849616.1084
E 2237184.1110



CONTROL POINT #9928
IRON PIN WITH IDOT CAP
STA 260+05.02, 31.65' LT.
N 849662.4382
E 2238448.7392



CONTROL POINT #121
IRON PIN WITH IDOT CAP
STA 260+48.13, 16.60' LT.
N 849647.2740
E 2238491.8133



FILE NAME = S:\Projects\0822B-VHY_IL_3_Grad\Tm\ dgn\CADD_Sheets\0822B-VHY-st-ATB.dgn



USER NAME = l.jackson	DESIGNED - ACM	REVISED -
MODEL NAME = Plan3	DRAWN - EDW	REVISED -
PLOT SCALE = 399.9992' / in.	CHECKED - LWJ	REVISED -
PLOT DATE = 8/22/2014	DATE - 8-11-14	REVISED -

STATE OF ILLINOIS
DEPARTMENT OF TRANSPORTATION

ALIGNMENTS AND TIES		
FAS ROUTE 749/752 (IL ROUTE 3)		
SCALE: 1"=200'	SHEET 3 OF 6 SHEETS	STA. 202+00 TO STA. 262+00

F.A.S. RTE.	SECTION	COUNTY	TOTAL SHEETS	SHEET NO.
• 749/752	101-2RS-1	JERSEY	438	50
CONTRACT NO. 76789			ILLINOIS FED. AID PROJECT	