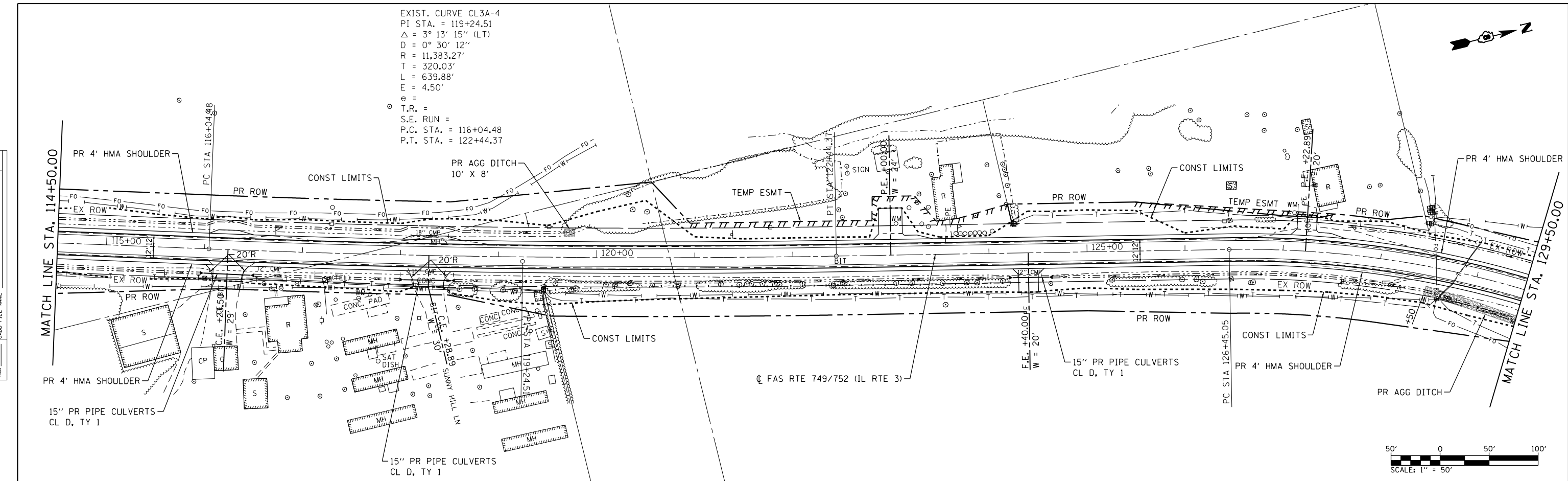
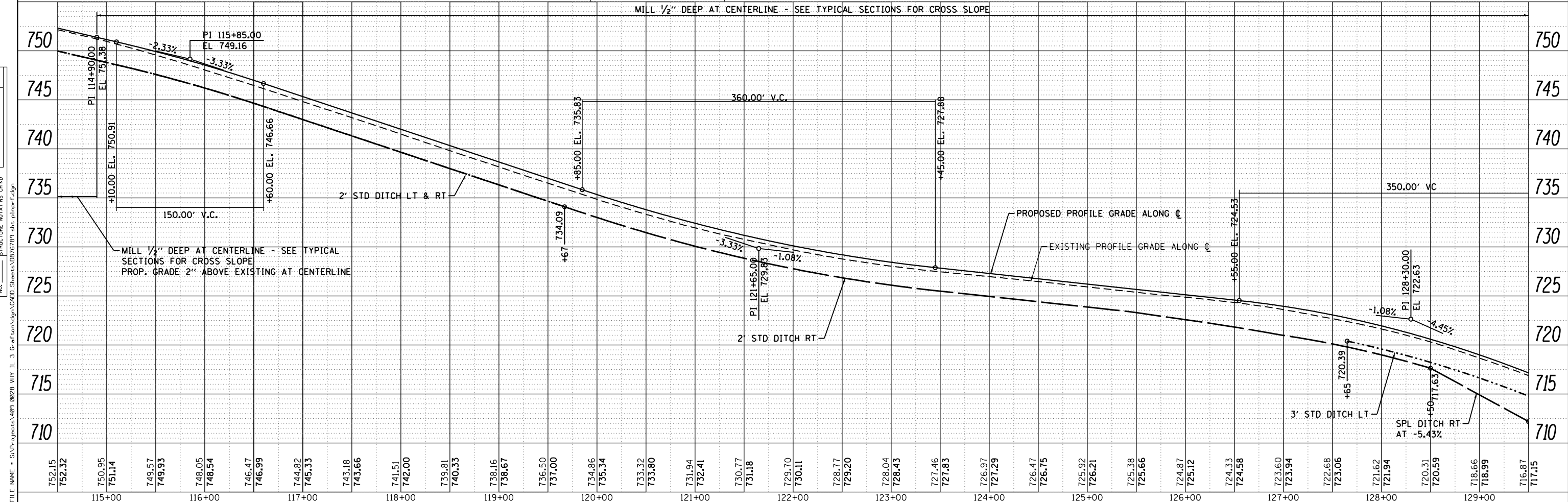
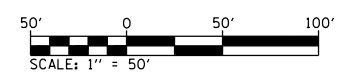


PLAN	SURVEYED	BY	DATE
	PLOTTED		
	GRADES CHECKED		
	STRUCTURE NOTATIONS CHECKED		
	NOTE BOOK NO.		
	CADD FILE NAME		

PROFILE	SURVEYED	BY	DATE
	PLOTTED		
	GRADES CHECKED		
	STRUCTURE NOTATIONS CHECKED		
	NOTE BOOK NO.		
	CADD FILE NAME		



EXIST. CURVE CL3A-4
 PI STA. = 119+24.51
 $\Delta = 3^\circ 13' 15''$ (LT)
 $D = 0^\circ 30' 12''$
 $R = 11,383.27'$
 $T = 320.03'$
 $L = 639.88'$
 $E = 4.50'$
 $e =$
 $T.R. =$
 $S.E. RUN =$
 $P.C. STA. = 116+04.48$
 $P.T. STA. = 122+44.37$



FILE NAME = S:\P\Projects\08-0228-VHY_IL_3_GraF\asn\gdn\CADD_Sheets\0876789-sh1-prf-F.dgn



USER NAME = l_jackson	DESIGNED - ACM	REVISED -
MODEL NAME = PP03	DRAWN - EDW	REVISED -
PLOT SCALE = 99.9998' / in.	CHECKED - LWJ	REVISED -
PLOT DATE = 8/22/2014	DATE - 8-11-14	REVISED -

**STATE OF ILLINOIS
DEPARTMENT OF TRANSPORTATION**

PLAN AND PROFILE FAS ROUTE 749/752 (IL RTE. 3)		
SCALE: 1"=50'	SHEET 3 OF 23 SHEETS	STA. 114+50 TO STA. 129+50

F.A.S. RTE.	SECTION	COUNTY	TOTAL SHEETS	SHEET NO.
749/752	101-2RS-1	JERSEY	438	56
CONTRACT NO. 76789			ILLINOIS FED. AID PROJECT	