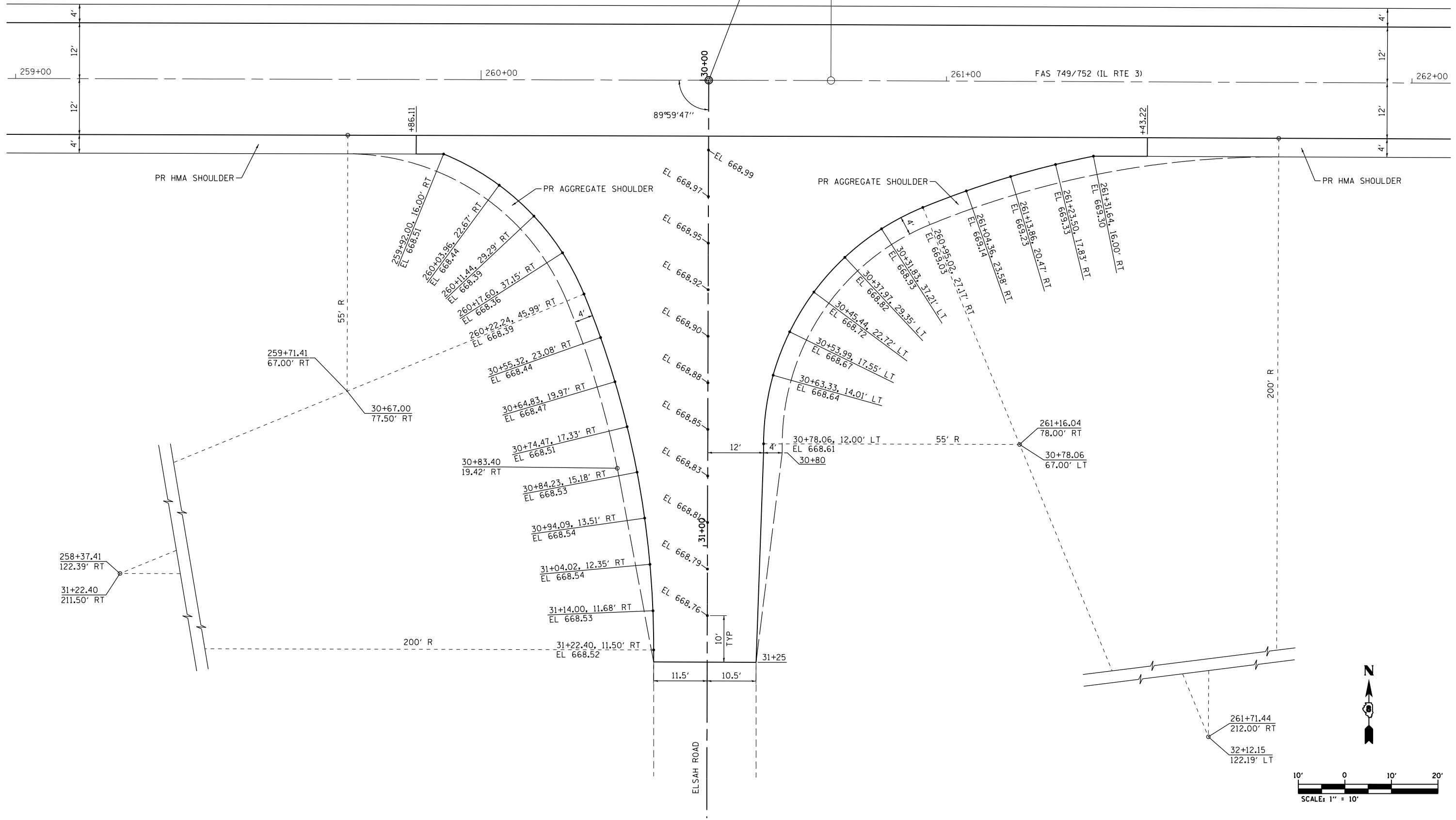


STA 260+48.91 FAS 749/752 (IL RTE 3)
 STA 30+00.00 ELSAH RD

PI Sta 260+75.18



FILE NAME = S:\Projects\089-002B-VHY IL 3 Crd\Tcm\ dgn\CADD_Sheets\089752\89-ht-intersec.dgn



USER NAME = l.jackson	DESIGNED - ACM	REVISED -
MODEL NAME = Int 3 ELSah	DRAWN - EDW	REVISED -
PLOT SCALE = 20.0000' / in.	CHECKED - LWJ	REVISED -
PLOT DATE = 8/22/2014	DATE - 8-11-14	REVISED -

**STATE OF ILLINOIS
 DEPARTMENT OF TRANSPORTATION**

**INTERSECTION DETAILS
 FAS 749/752 (IL RTE 3) & ELSAH RD**
 SCALE: 1"=10' SHEET 3 OF 6 SHEETS

F.A.S. RTE.	SECTION	COUNTY	TOTAL SHEETS	SHEET NO.
• 749/752	101-2RS-1	JERSEY	438	190
CONTRACT NO. 76789			ILLINOIS FED. AID PROJECT	