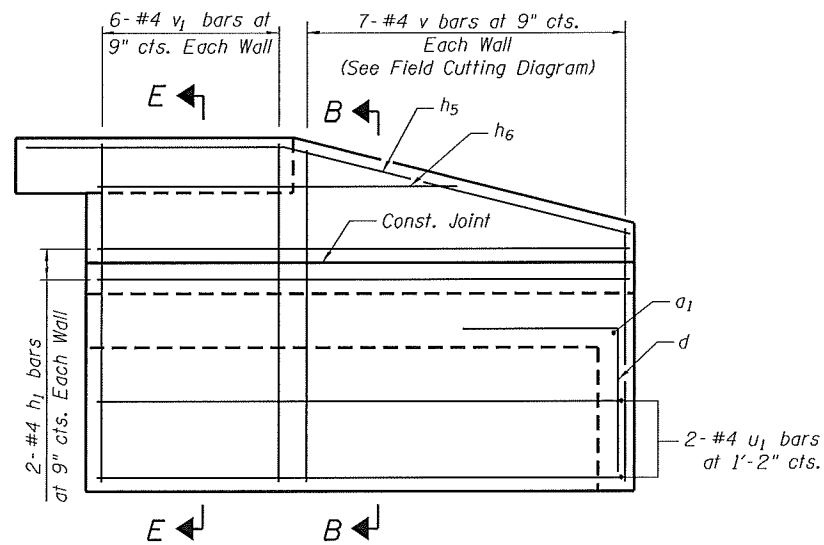
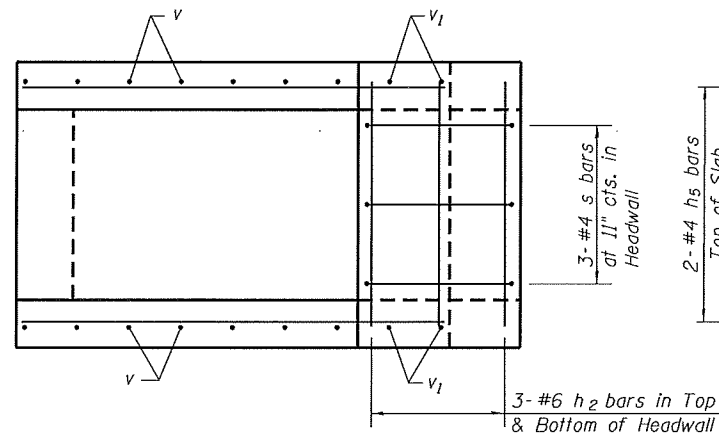


**LEFT EXTENSION**

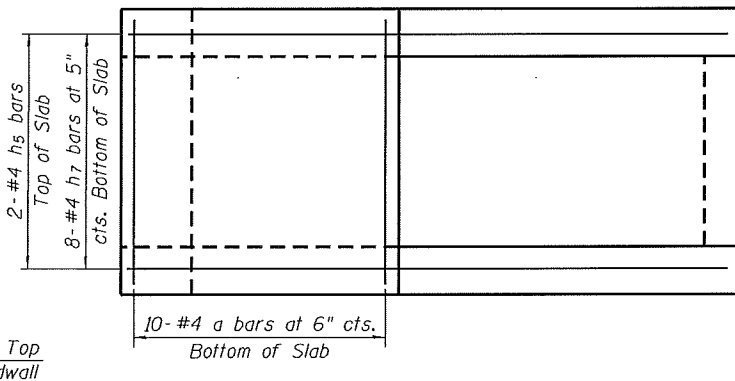


**RIGHT EXTENSION**

**ELEVATION**  
(Showing Reinforcement)

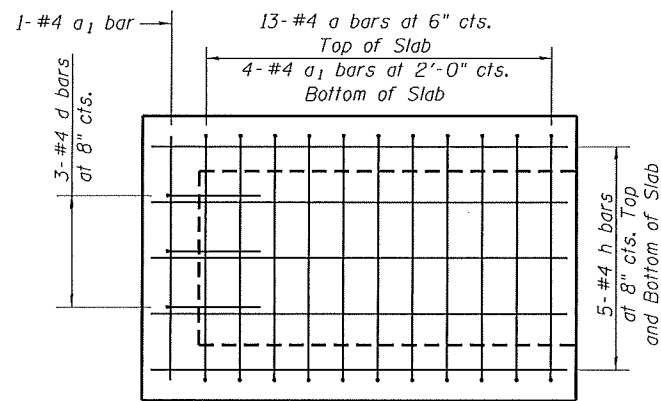


**LEFT EXTENSION**

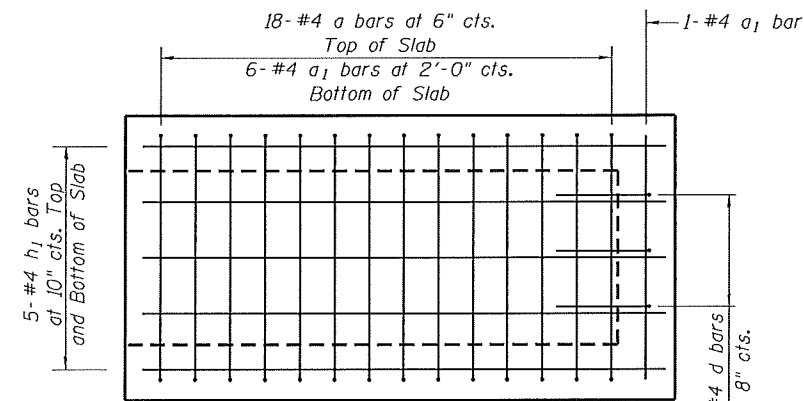


**RIGHT EXTENSION**

**TOP SLAB**  
(Showing Reinforcement)

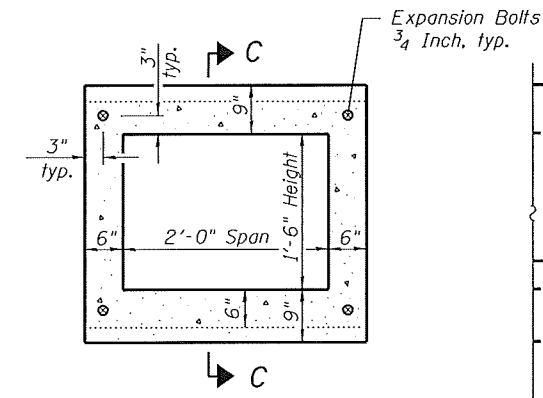


**LEFT EXTENSION**



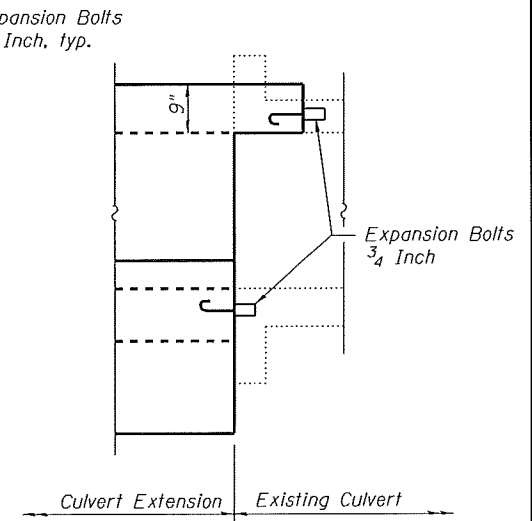
**RIGHT EXTENSION**

**BOTTOM SLAB**  
(Showing Reinforcement)

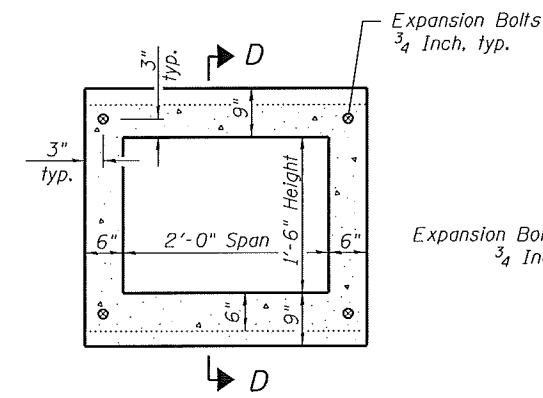


**LEFT EXTENSION**  
**EXPANSION BOLT LAYOUT**

Note - Expansion Bolts shall be 3/4" hooked bolts. Hooked bolts shall extend a minimum of 9" into the new concrete

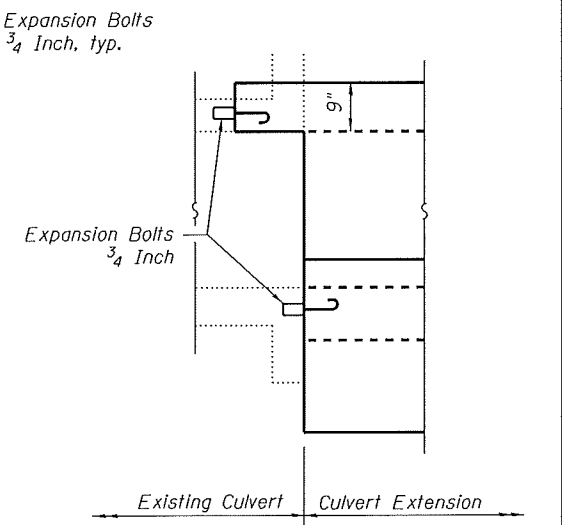


**SECTION C-C**



**RIGHT EXTENSION**  
**EXPANSION BOLT LAYOUT**

Note - Expansion Bolts shall be 3/4" hooked bolts. Hooked bolts shall extend a minimum of 9" into the new concrete



**SECTION D-D**

Note:  
For Section A-A, B-B, and E-E see Sheet 3 of 3.  
For Bar Bend and Total Bill of Material, see Sheet 3 of 3.

FILE NAME = 191-33-46-76785-002.dgn



USER NAME = jdrinke1menn  
Illinois Design Firm Number 184.001670  
PLOT SCALE =  
PLOT DATE = 8/8/2014

DESIGNED - JD  
CHECKED - BB  
DRAWN - WS  
CHECKED - CJF

REVISED -  
REVISED -  
REVISED -  
REVISED -

STATE OF ILLINOIS  
DEPARTMENT OF TRANSPORTATION

BOX CULVERT EXTENSION DETAILS,  
STATION 191+33.46

SHEET NO. 2 OF 3 SHEETS

F.A.S. RTE.	SECTION	COUNTY	TOTAL SHEETS	SHEET NO.
752	101-2RS-1	JERSEY	438	212
CONTRACT NO. 76789				

ILLINOIS FED. AID PROJECT