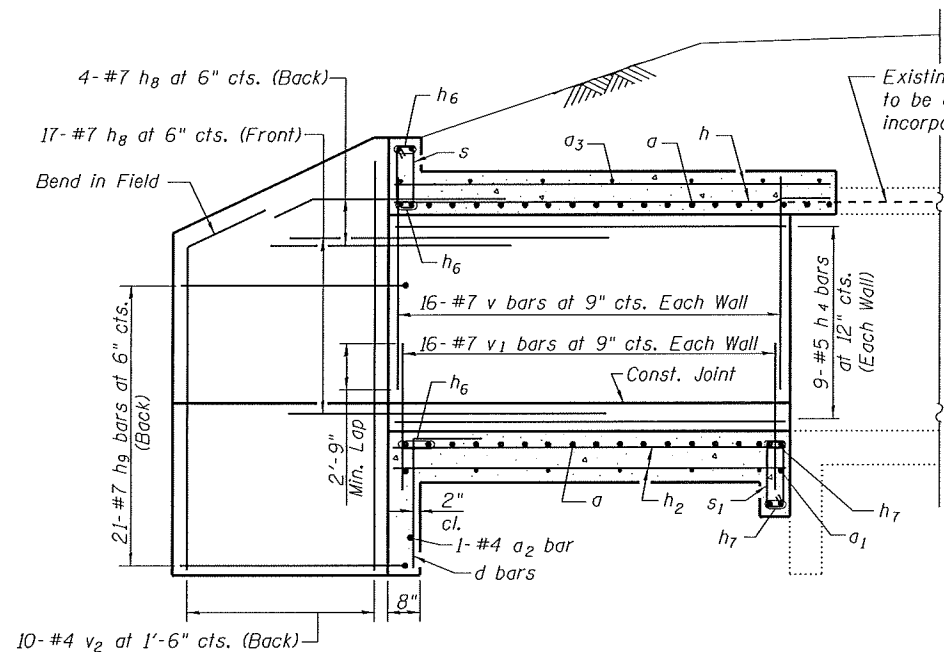
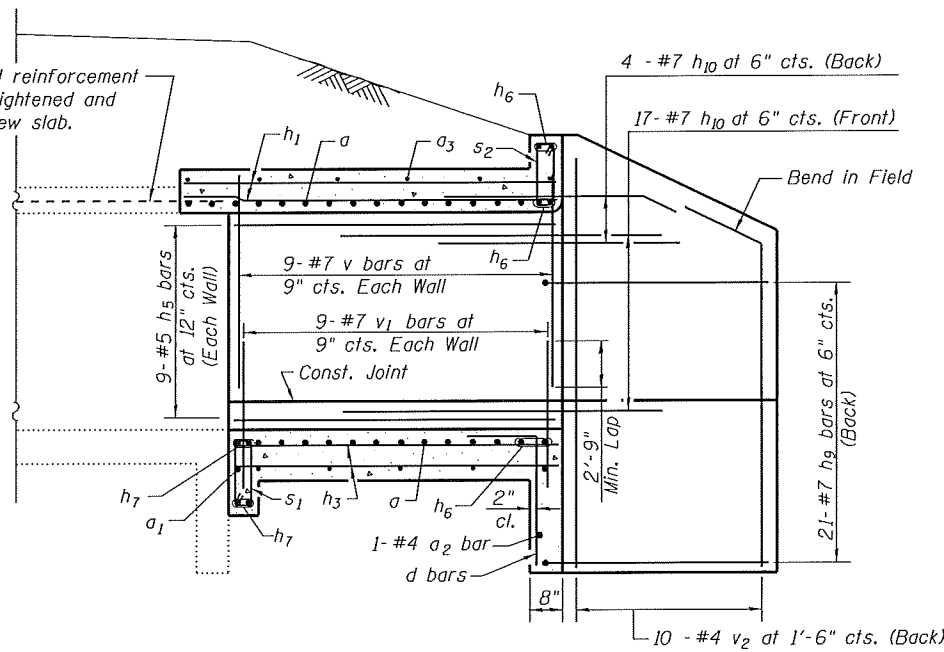


Note:  
Any reinforcement bars that are damaged during concrete removal operations shall be repaired or replaced using an approved bar splicer or anchorage system. Cost shall be included in Concrete Removal.

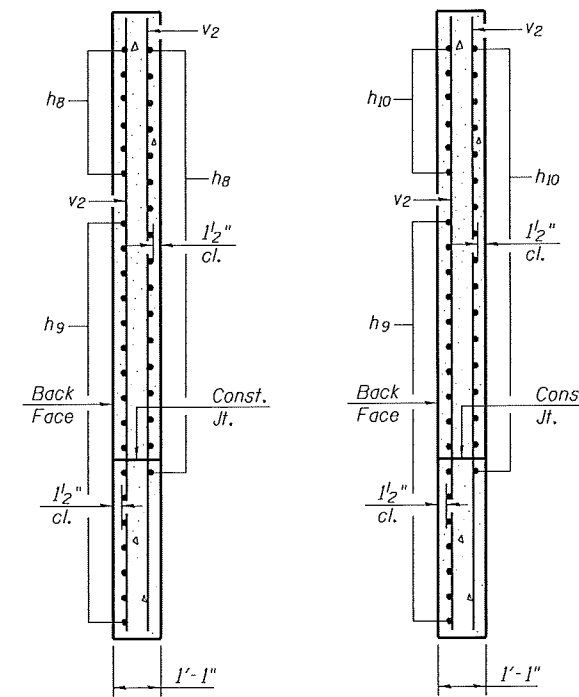


LEFT EXTENSION



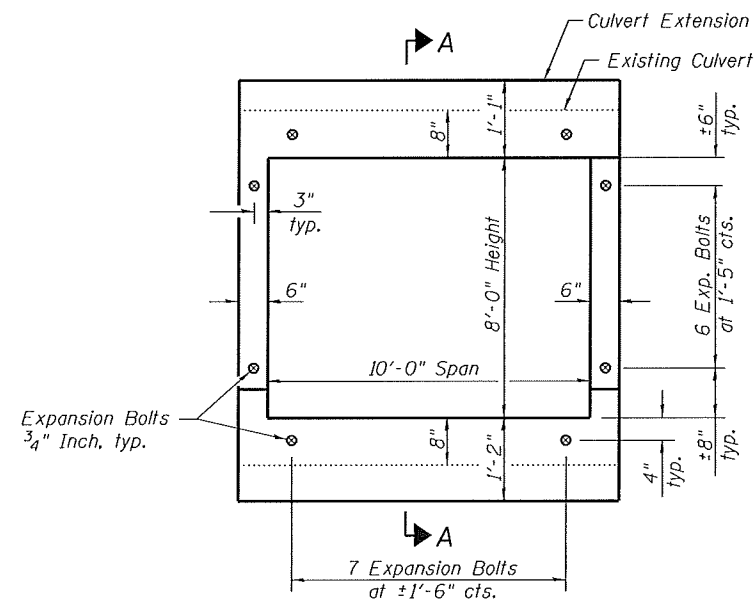
RIGHT EXTENSION

ELEVATION



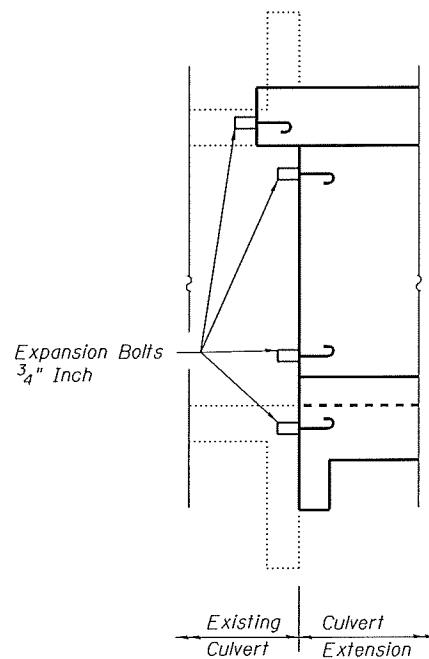
SECTION C-C

SECTION D-D

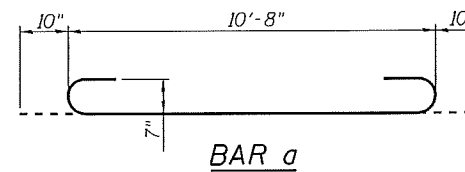


EXPANSION BOLT LAYOUT

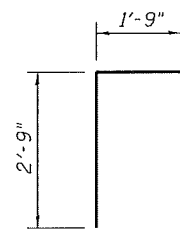
Note:  
Expansion Bolts shall be 3/4\"/>



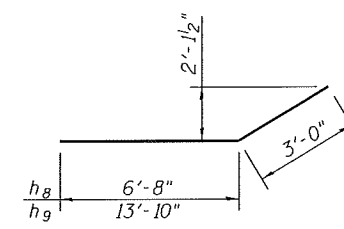
SECTION A-A



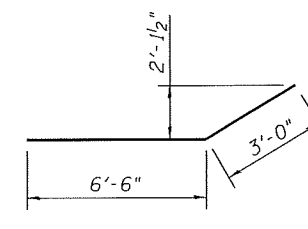
BAR a



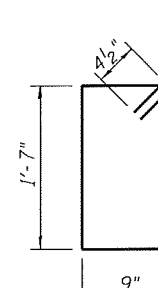
BAR d



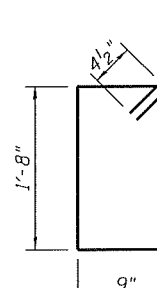
BARS h8 & h9



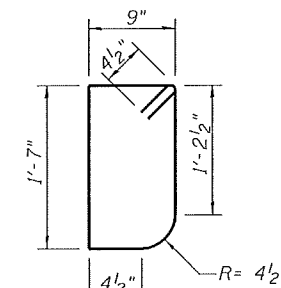
BAR h10



BAR s



BAR s1



BAR s2

TOTAL BILL OF MATERIAL

Bar	No.	Size	Length	Shape
a	46	#7	12'-4"	
a1	11	#4	10'-8"	
a2	2	#4	11'-7"	
a3	14	#5	10'-8"	
d	22	#4	4'-6"	
h	40	#4	12'-6"	
h1	40	#4	7'-0"	
h2	40	#4	11'-2"	
h3	40	#4	5'-8"	
h4	18	#5	11'-3"	
h5	18	#5	5'-9"	
h6	12	#7	10'-11"	
h7	8	#7	10'-8"	
h8	42	#7	9'-8"	
h9	84	#7	16'-10"	
h10	42	#7	9'-6"	
s	12	#4	5'-5"	
s1	24	#4	5'-7"	
s2	12	#4	5'-3"	
v	54	#7	8'-4"	
v1	54	#7	4'-5"	
v2	44	#4	12'-6"	
Reinforcement Bars			Pound	9700
Concrete Removal			Cu. Yd.	34.0
Expansion Bolts 3/4 Inch			Each	52
Concrete Box Culverts			Cu. Yd.	52.8

FILE NAME = 234-34-81-76789-003.dgn



USER NAME = jdrinkeImann	DESIGNED - JD	REVISED -
Illinois Design Firm Number 184.001670	CHECKED - BB	REVISED -
PLOT SCALE =	DRAWN - WS	REVISED -
PLOT DATE = 8/8/2014	CHECKED - CJF	REVISED -

STATE OF ILLINOIS  
DEPARTMENT OF TRANSPORTATION

BOX CULVERT EXTENSION DETAILS  
STRUCTURE NUMBER 042-2472

SHEET NO. 3 OF 3 SHEETS

F.A.S. RTE. 752	SECTION 101-2RS-1	COUNTY JERSEY	TOTAL SHEETS 438	SHEET NO. 220
ILLINOIS FED. AID PROJECT			CONTRACT NO. 76789	