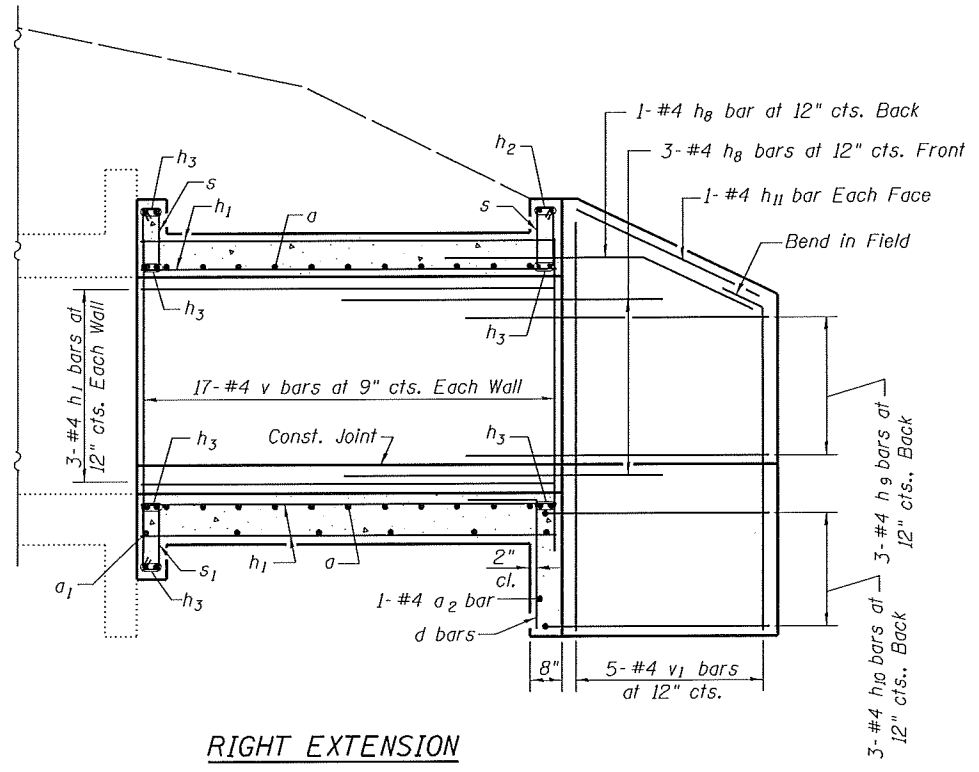
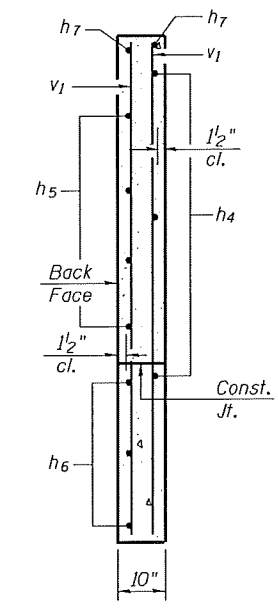


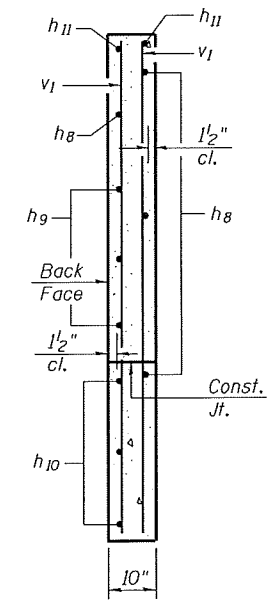
LEFT EXTENSION



RIGHT EXTENSION

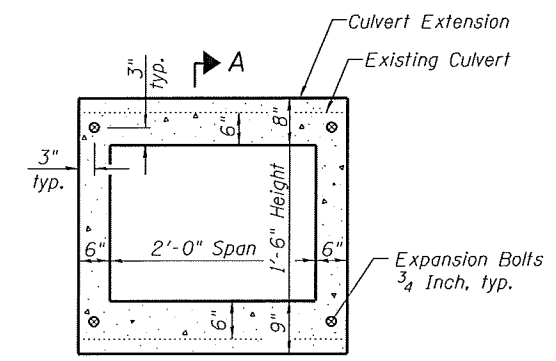


SECTION C-C



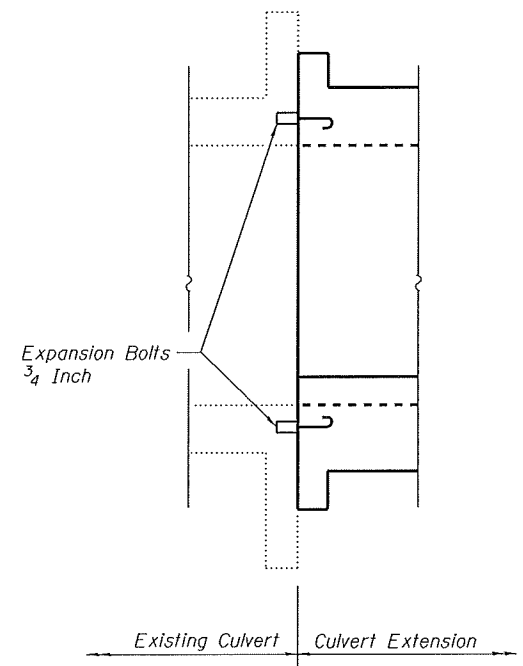
SECTION D-D

ELEVATION

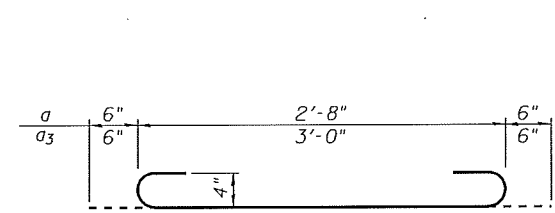


EXPANSION BOLT LAYOUT

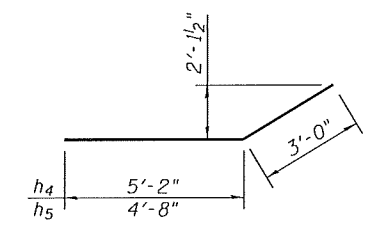
Note - Expansion Bolts shall be 3/4\"/>



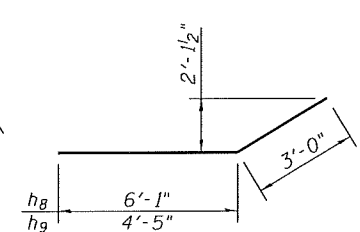
SECTION A-A



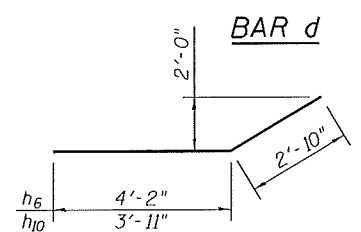
BAR a & a3



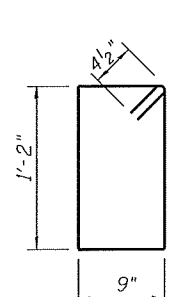
BARS h4 & h5



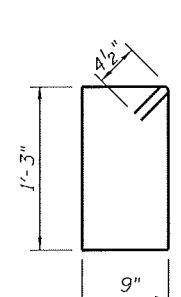
BARS h8 & h9



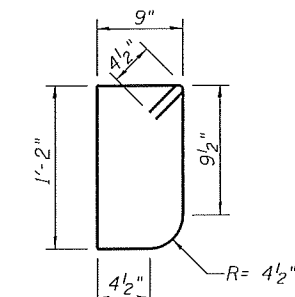
BARS h6 & h10



BAR s



BAR s1



BAR s2

TOTAL BILL OF MATERIAL

Bar	No.	Size	Length	Shape
a	22	#4	3'-8"	U
a1	11	#4	2'-8"	U
a2	2	#4	2'-10"	U
a3	8	#4	4'-0"	U
d	6	#4	4'-6"	L
h	25	#4	4'-9"	U
h1	25	#4	11'-9"	U
h2	4	#6	2'-3"	U
h3	24	#6	3'-0"	U
h4	6	#4	8'-2"	U
h5	8	#4	7'-8"	U
h6	6	#4	7'-0"	U
h7	4	#4	3'-4"	U
h8	8	#4	9'-1"	U
h9	6	#4	7'-5"	U
h10	6	#4	6'-9"	U
h11	4	#4	3'-2"	U
s	12	#4	4'-7"	D
s1	8	#4	4'-9"	D
s2	4	#4	4'-5"	D
v	54	#4	2'-7"	U
v1	24	#4	5'-7"	U
Concrete Box Culverts				Cu. Yd. 7.6
Reinforcement Bars				Pound 1000
Expansion Bolts 3/4 Inch				Each 8

FILE NAME = 326-74.64-76789-003.dgn



USER NAME = jdrnkemann  
 Illinois Design Firm Number 184.001670  
 PLOT SCALE =  
 PLOT DATE = 8/8/2014

DESIGNED - JD  
 CHECKED - BB  
 DRAWN - WS  
 CHECKED - CJF

REVISED -  
 REVISED -  
 REVISED -  
 REVISED -

STATE OF ILLINOIS  
 DEPARTMENT OF TRANSPORTATION

BOX CULVERT EXTENSION DETAILS  
 STATION 326 + 74.64

SHEET NO. 3 OF 3 SHEETS

F.A.S. RTE.	SECTION	COUNTY	TOTAL SHEETS	SHEET NO.
752	101-2RS-1	JERSEY	438	239
CONTRACT NO. 76789				
ILLINOIS FED. AID PROJECT				