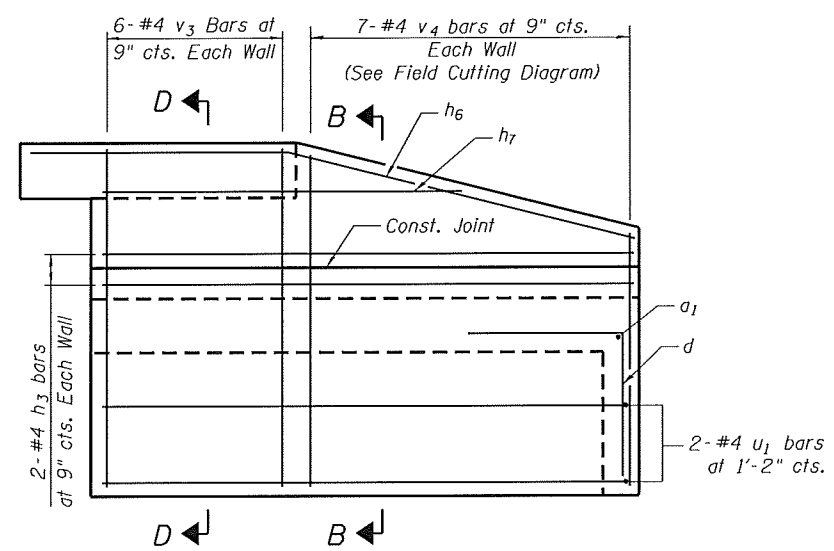
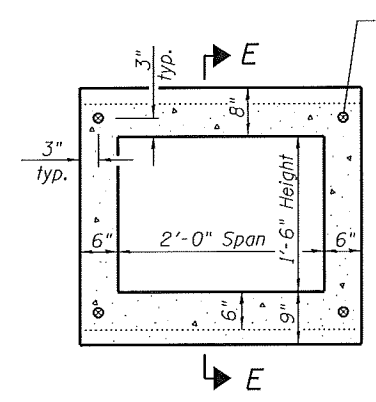


LEFT EXTENSION

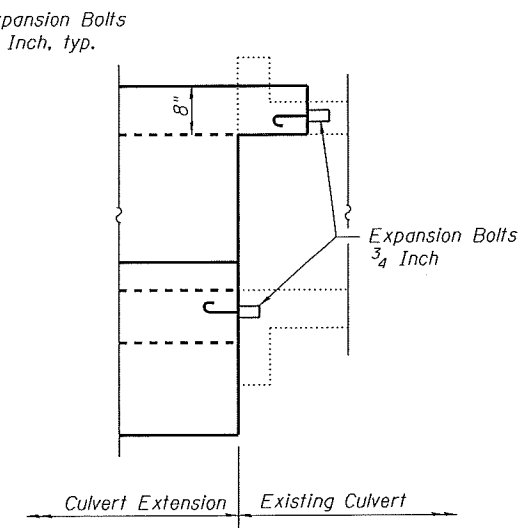


RIGHT EXTENSION

ELEVATION  
(Showing Reinforcement)



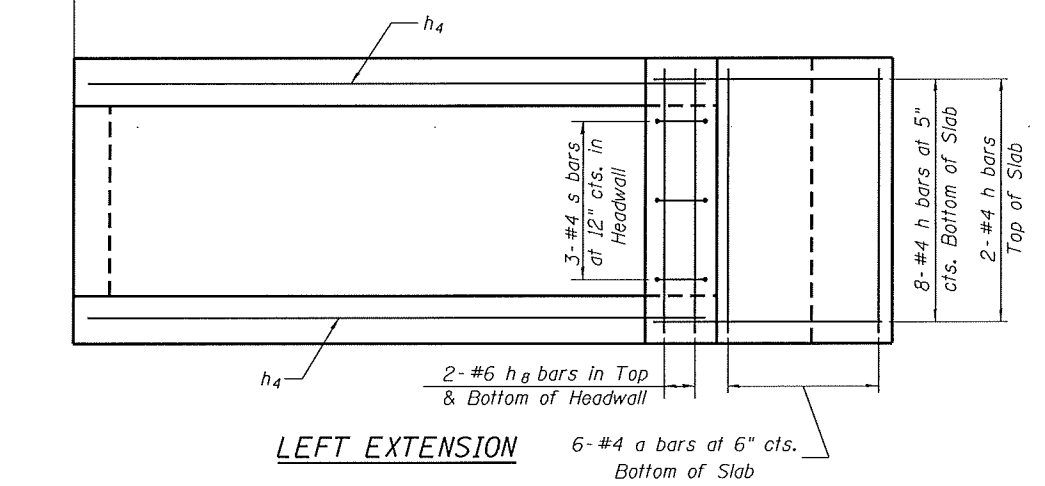
LEFT EXTENSION  
EXPANSION BOLT LAYOUT



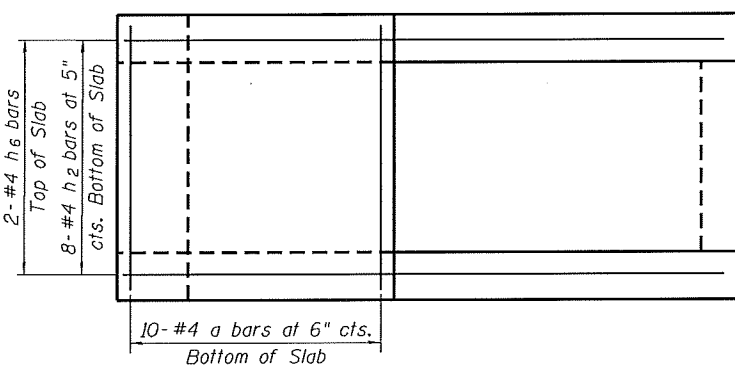
SECTION E-E

Note - Expansion Bolts shall be 3/4" hooked bolts. Hooked bolts shall extend a minimum of 9" into the new concrete

Note - Expansion Bolts shall be 3/4" hooked bolts. Hooked bolts shall extend a minimum of 9" into the new concrete

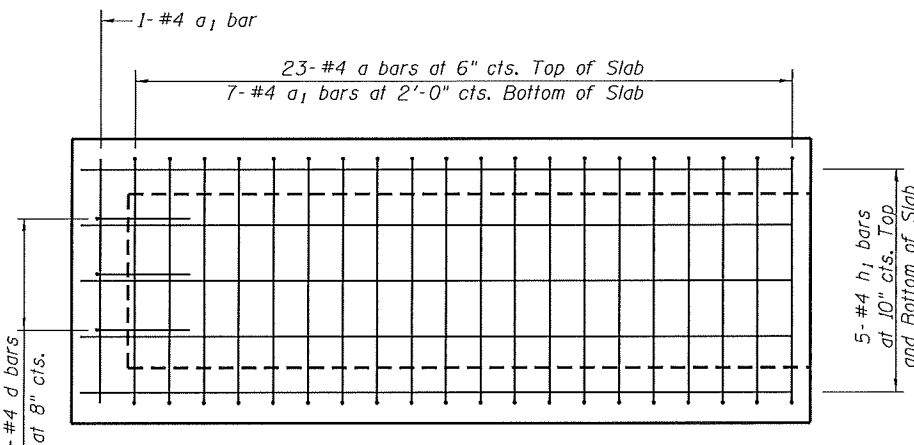


LEFT EXTENSION

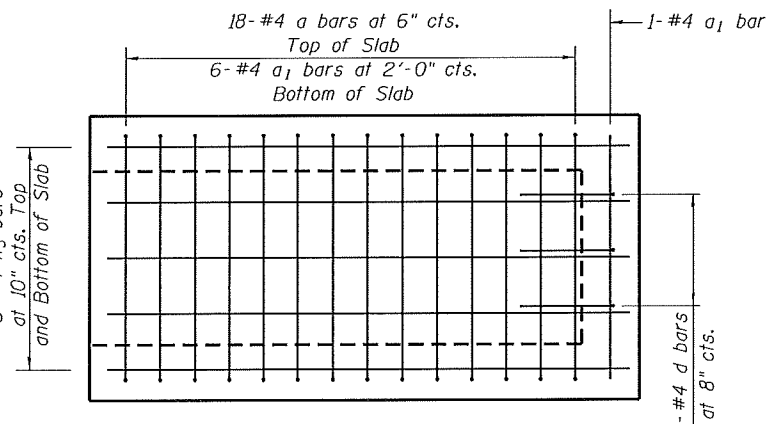


RIGHT EXTENSION

TOP SLAB  
(Showing Reinforcement)

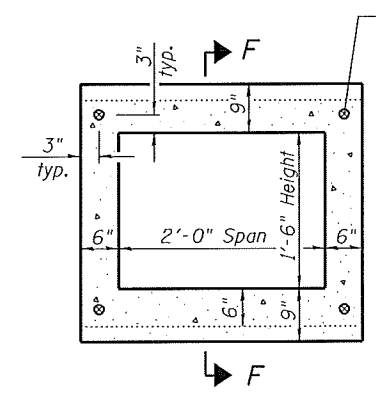


LEFT EXTENSION

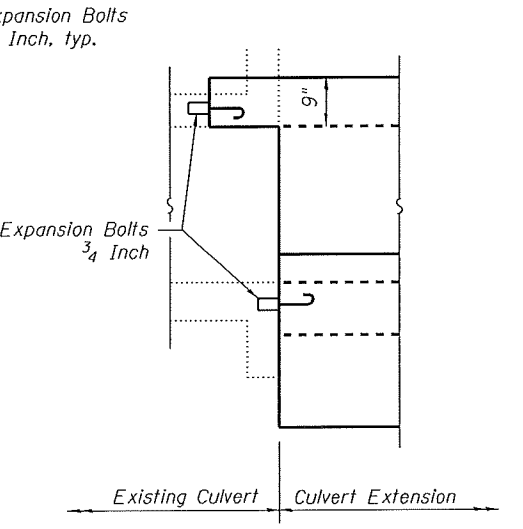


RIGHT EXTENSION

BOTTOM SLAB  
(Showing Reinforcement)



RIGHT EXTENSION  
EXPANSION BOLT LAYOUT



SECTION F-F

Note:  
For Section A-A, B-B, C-C and D-D, see sheet 3 of 3.  
For Bar Bends and Total Bill of Material, see sheet 3 of 3.

FILE NAME = 335-54.73-76789-002.dgn



USER NAME = jdirnkemann	DESIGNED - JD	REVISED -
Illinois Design Firm Number 184.001670	CHECKED - BB	REVISED -
PLOT SCALE =	DRAWN - EW	REVISED -
PLOT DATE = 8/8/2014	CHECKED - CJF	REVISED -

STATE OF ILLINOIS  
DEPARTMENT OF TRANSPORTATION

BOX CULVERT EXTENSION DETAILS,  
STATION 335 + 54.73

SHEET NO. 2 OF 3 SHEETS

F.A.S. RTE.	SECTION	COUNTY	TOTAL SHEETS	SHEET NO.
752	101-2RS-1	JERSEY	438	241
CONTRACT NO. 76789				
ILLINOIS FED. AID PROJECT				