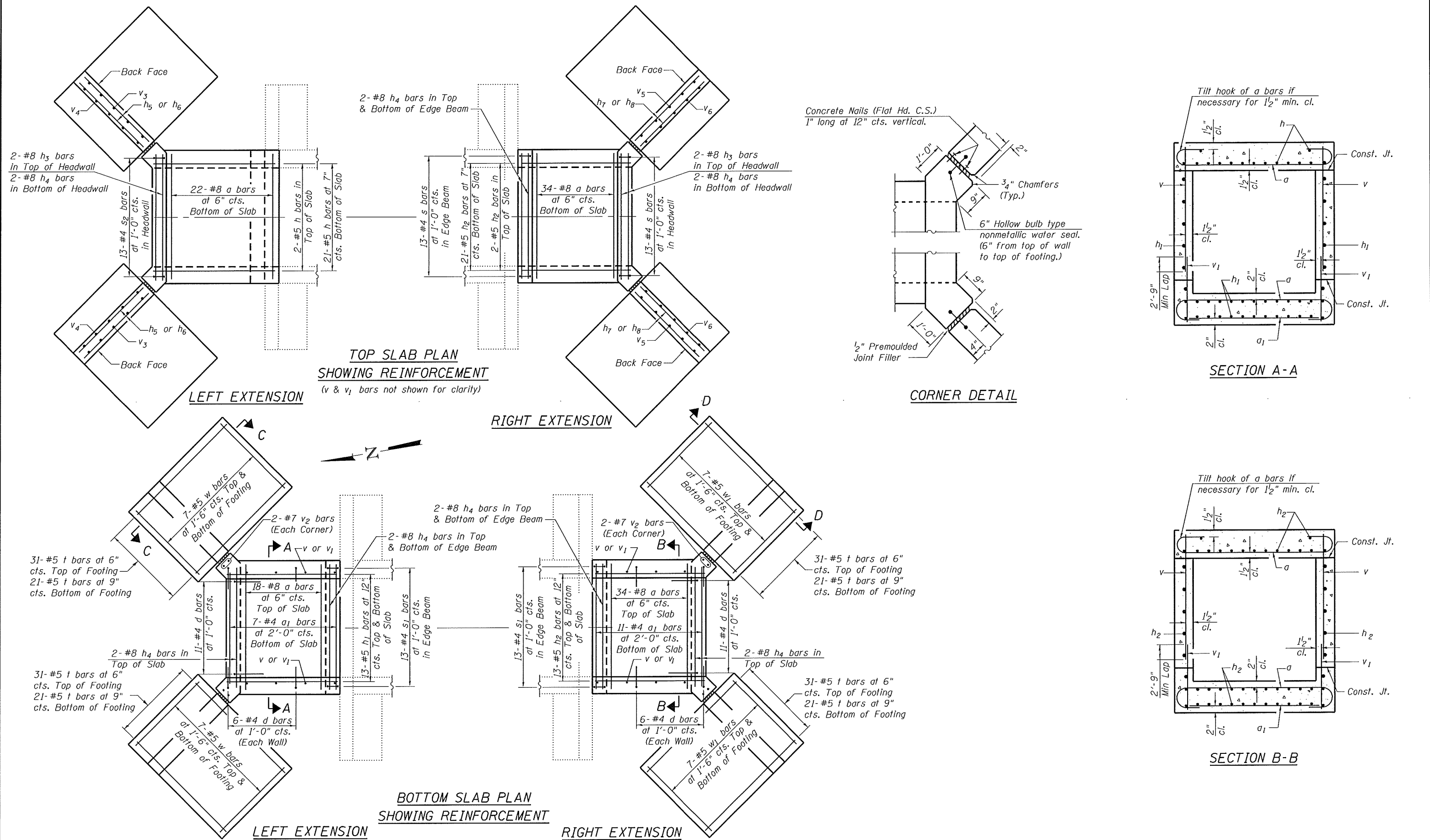


FILE NAME = 349-98.07-76789-002.dgn



Notes:
For Section C-C and D-D, see Sheet 3 of 4.
For Bar Bends and Total Bill of Material, see Sheet 4 of 4.

<p>1123 S.A. BRADLEY & SMITH DRIVE TROY, ILLINOIS 62234 PHONE (618) 432-1423</p>	USER NAME = jdirkeimann	DESIGNED - JD	REVISED -	STATE OF ILLINOIS DEPARTMENT OF TRANSPORTATION	BOX CULVERT EXTENSION DETAILS STRUCTURE NUMBER 042-2474		F.A.S. RTE. 752	SECTION 101-2RS-1	COUNTY JERSEY	TOTAL SHEETS 438	SHEET NO. 247	
	Illinois Design Firm Number 184.001670	CHECKED - BB	REVISED -									
	PLOT SCALE =	DRAWN - EW	REVISED -									
	PLOT DATE = 8/8/2014	CHECKED - CJF	REVISED -								CONTRACT NO. 76789	
SHEET NO. 2 OF 4 SHEETS											ILLINOIS FED. AID PROJECT	