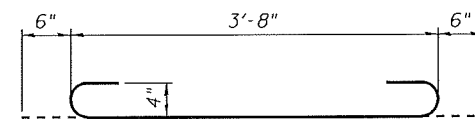
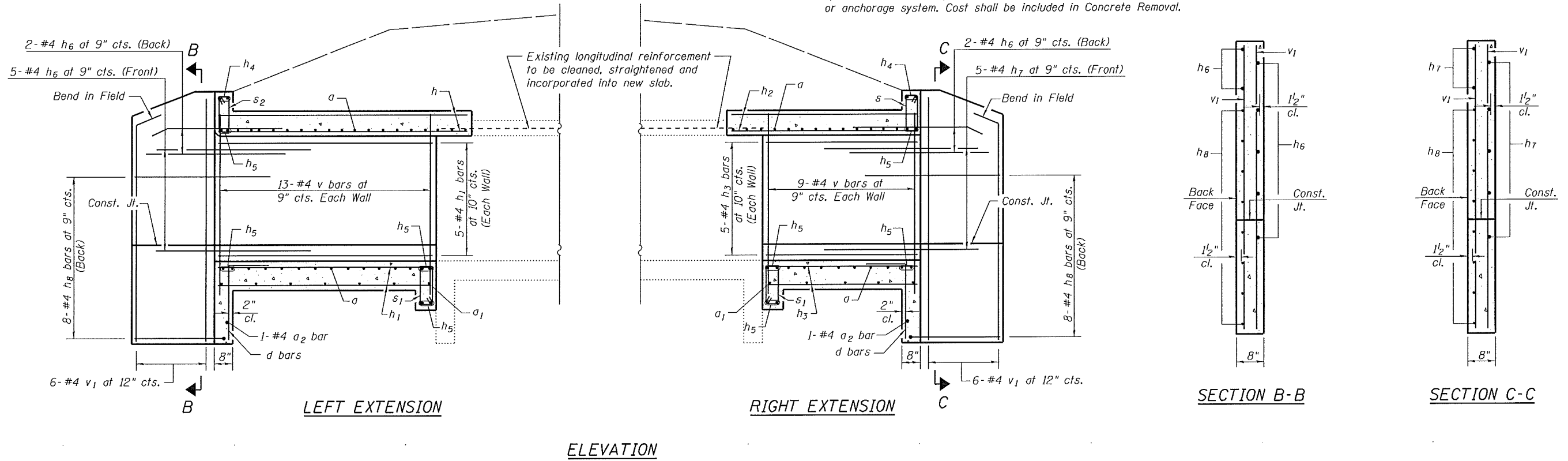


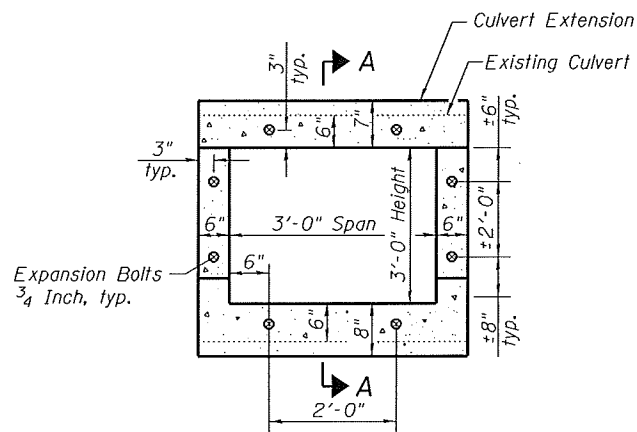
Note:
Any reinforcement bars that are damaged during concrete removal operations shall be repaired or replaced using an approved bar splicer or anchorage system. Cost shall be included in Concrete Removal.



BAR a

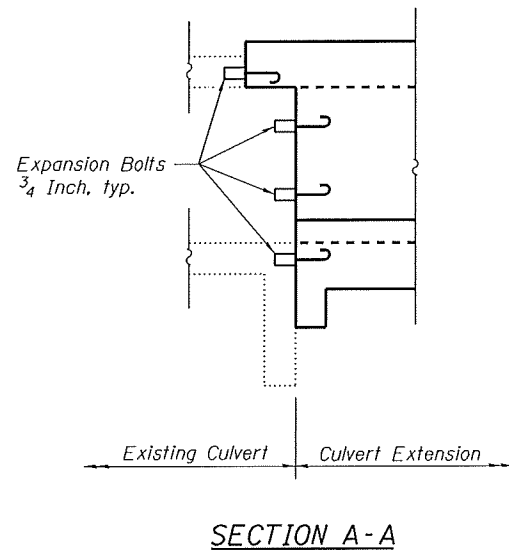
TOTAL BILL OF MATERIAL

Bar	No.	Size	Length	Shape
a	38	#4	4'-8"	U
a1	10	#4	3'-8"	—
a2	2	#4	3'-5"	—
d	8	#4	4'-6"	L
h	10	#4	9'-6"	—
h1	22	#4	8'-8"	—
h2	10	#4	6'-6"	—
h3	22	#4	5'-8"	—
h4	4	#6	2'-9"	—
h5	16	#6	3'-8"	—
h6	18	#4	9'-1"	L
h7	10	#4	9'-2"	L
h8	32	#4	9'-7"	L
s	5	#4	4'-5"	U
s1	10	#4	4'-7"	U
s2	5	#4	4'-3"	U
v	48	#4	3'-11"	—
v1	28	#4	7'-0"	—
Concrete Box Culverts				Cu. Yd. 10.3
Reinforcement Bars				Pound 1290
Expansion Bolts 3/4 Inch				Each 16
Concrete Removal				Cu. Yd. 2.0

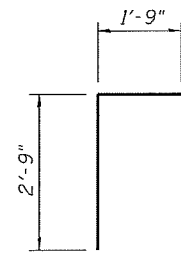


Note - Expansion Bolts shall be 3/4\"/>

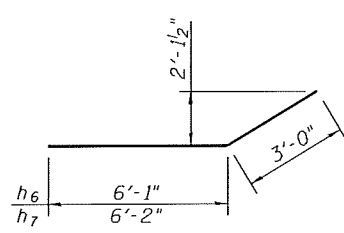
EXPANSION BOLT LAYOUT



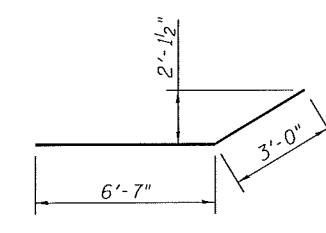
SECTION A-A



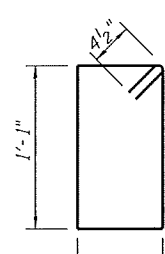
BAR d



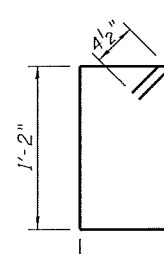
BARS h6 & h7



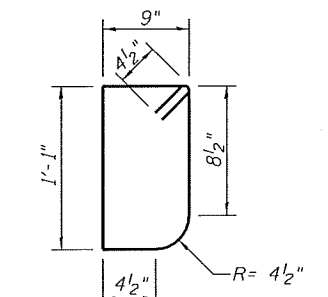
BAR h8



BAR s



BAR s1



BAR s2

FILE NAME = 370+51.35-76789-003.dgn



USER NAME = jdinkeImann
Illinois Design Firm Number 184.001670
PLOT SCALE =
PLOT DATE = 8/8/2014

DESIGNED - JD
CHECKED - BB
DRAWN - WS
CHECKED - CJF

REVISED -
REVISED -
REVISED -
REVISED -

STATE OF ILLINOIS
DEPARTMENT OF TRANSPORTATION

BOX CULVERT EXTENSION DETAILS
STATION 370+51.35

SHEET NO. 3 OF 3 SHEETS

F.A.S. RTE.	SECTION	COUNTY	TOTAL SHEETS	SHEET NO.
752	101-2RS-1	JERSEY	438	256
CONTRACT NO. 76789				
ILLINOIS FED. AID PROJECT				