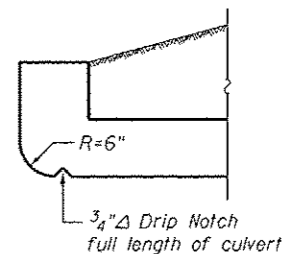


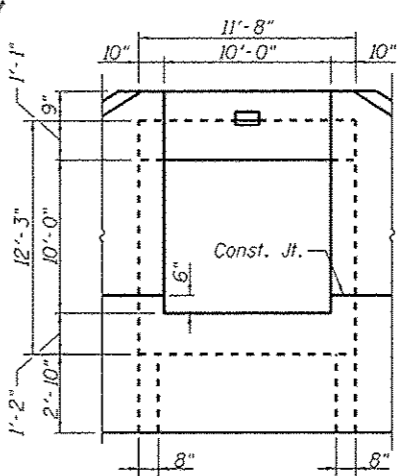
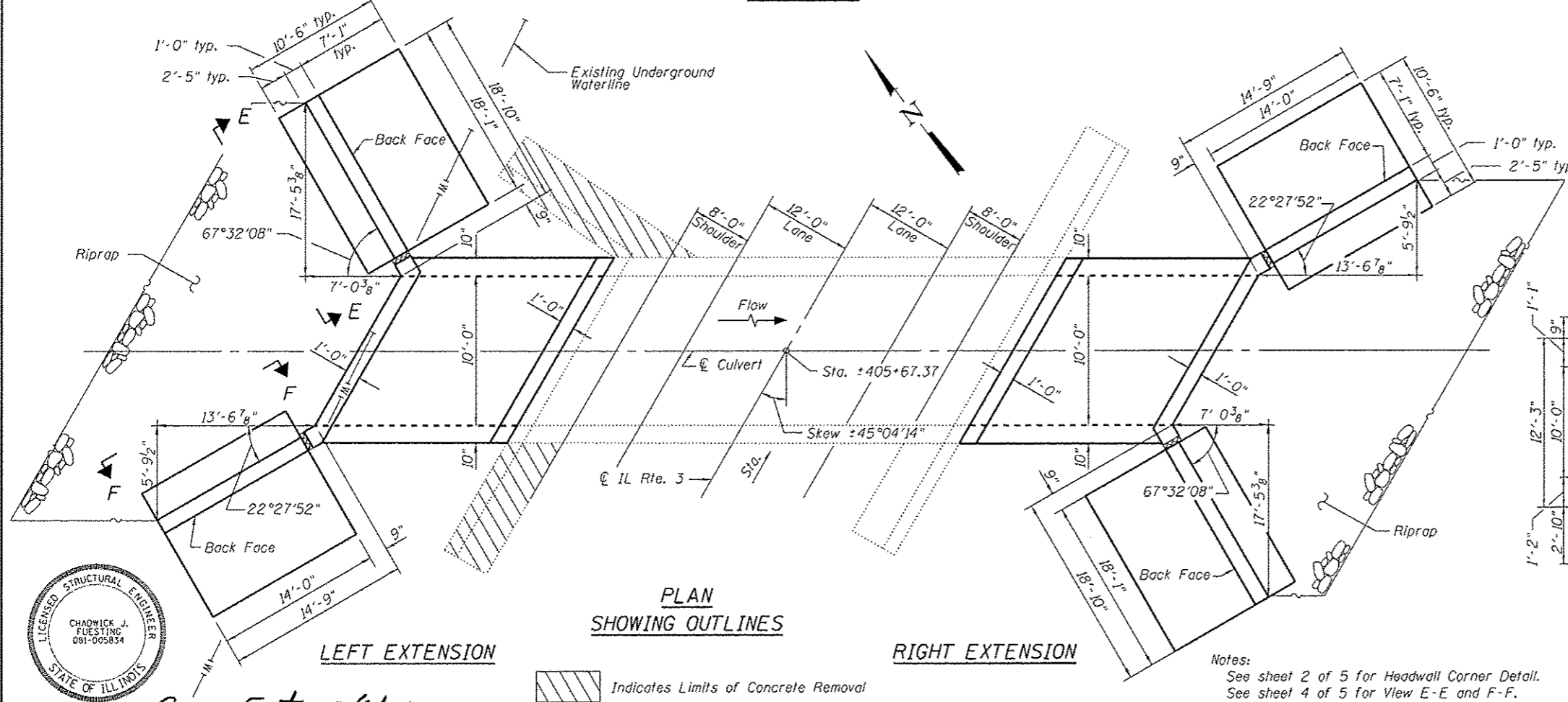
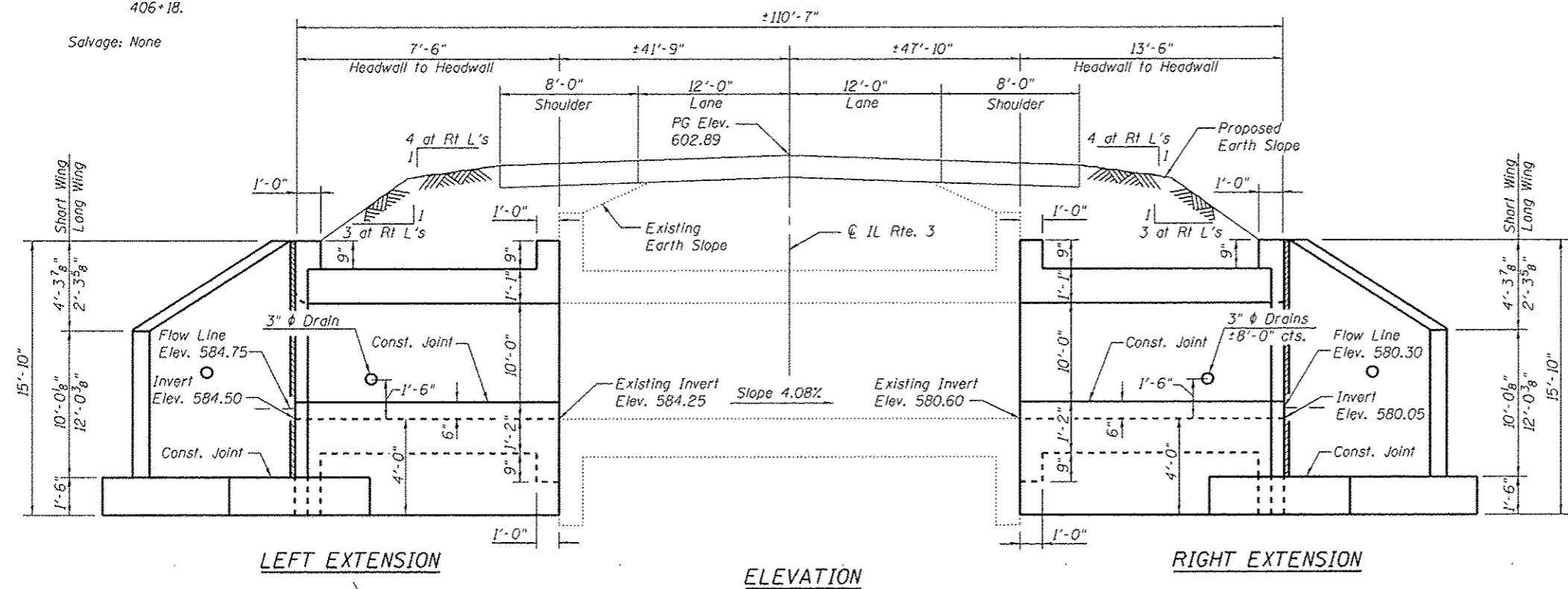
Existing Structure: The existing structure, SN 042-2475, is a ±89'-7" long reinforced cast-in-place concrete box culvert with a 10'-0" x 10'-0" opening. The original structure was constructed as S.B.I. Route 109 Construction Section 101-A at the original station of 406+18.



HEADWALL DETAILS AT UPSTREAM END

GENERAL NOTES

Reinforcement bars designated (E) shall be epoxy coated.
 Plan dimensions and details relative to the existing structure have been taken from existing plans and are subject to nominal construction variations. It shall be the Contractor's responsibility to verify such dimensions and details in the field and make necessary approved adjustments prior to construction or ordering of materials. Such variations shall not be cause for additional compensation for a change in the scope of work, however, the Contractor will be paid for the quantity furnished at the unit price for the work.
 The verification of allowable soil bearing pressure underlying the proposed box culvert shall be verified by a dynamic cone penetration (DCP) test or other acceptable measures as provided by the District Geotechnical and Field Engineers. The results of the test must exceed the calculated bearing pressures shown on the plans prior to placement of the Concrete Box Culvert. Tests failing to exceed the calculated bearing pressures as shown on the plans will require subsurface modification that must be coordinated with the District Geotechnical and Field Engineers.
 Expansion bolts shall be according to Standard Specification Article 1006.09.
 Precast alternative not allowed at this site.
 A distance half the length of the wingwall but not less than 6'-0" of the barrel shall be poured monolithically with the wingwalls.
 Calculated max. soil pressure under barrel = 2,673 psf.
 For Riprap details and quantities see Roadway Plans.
 For Total Bill of Material see sheet 4 of 5.



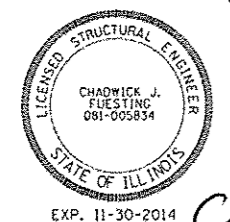
BOX CULVERT END ELEVATION (Dimensions Shown at RI L's)

DESIGN SPECIFICATIONS
 2002 AASHTO Standard Specifications for Highway Bridges

LOADING HS 20-44
 Allow 50#/sq. ft. for future wearing surface on extension.

DESIGN STRESSES
 EXISTING CONSTRUCTION NEW CONSTRUCTION
 f_y = 40,000 psi f_y = 60,000 psi
 f'c = 3,000 psi f'c = 3,500 psi

GENERAL PLAN & ELEVATION
 ILLINOIS ROUTE 3
 F.A.S. RTE. 752 - SEC. 101-2RS-1
 JERSEY COUNTY
 STATION 405+67.37
 STRUCTURE NO. 042-2475



Client Party 8/12/14

USER NAME : Jankelmann	DESIGNED - JD	REVISED -
Illinois Design Firm Number 184.001670	CHECKED - BB	REVISED -
PLOT SCALE :	DRAWN - WS	REVISED -
PLOT DATE : 8/8/2014	CHECKED - CJF	REVISED -

STATE OF ILLINOIS
 DEPARTMENT OF TRANSPORTATION

F.A.S. RTE.	SECTION	COUNTY	TOTAL SHEETS	SHEET NO.
752	101-2RS-1	JERSEY	438	269
CONTRACT NO. 76789			ILLINOIS FED. AID PROJECT	