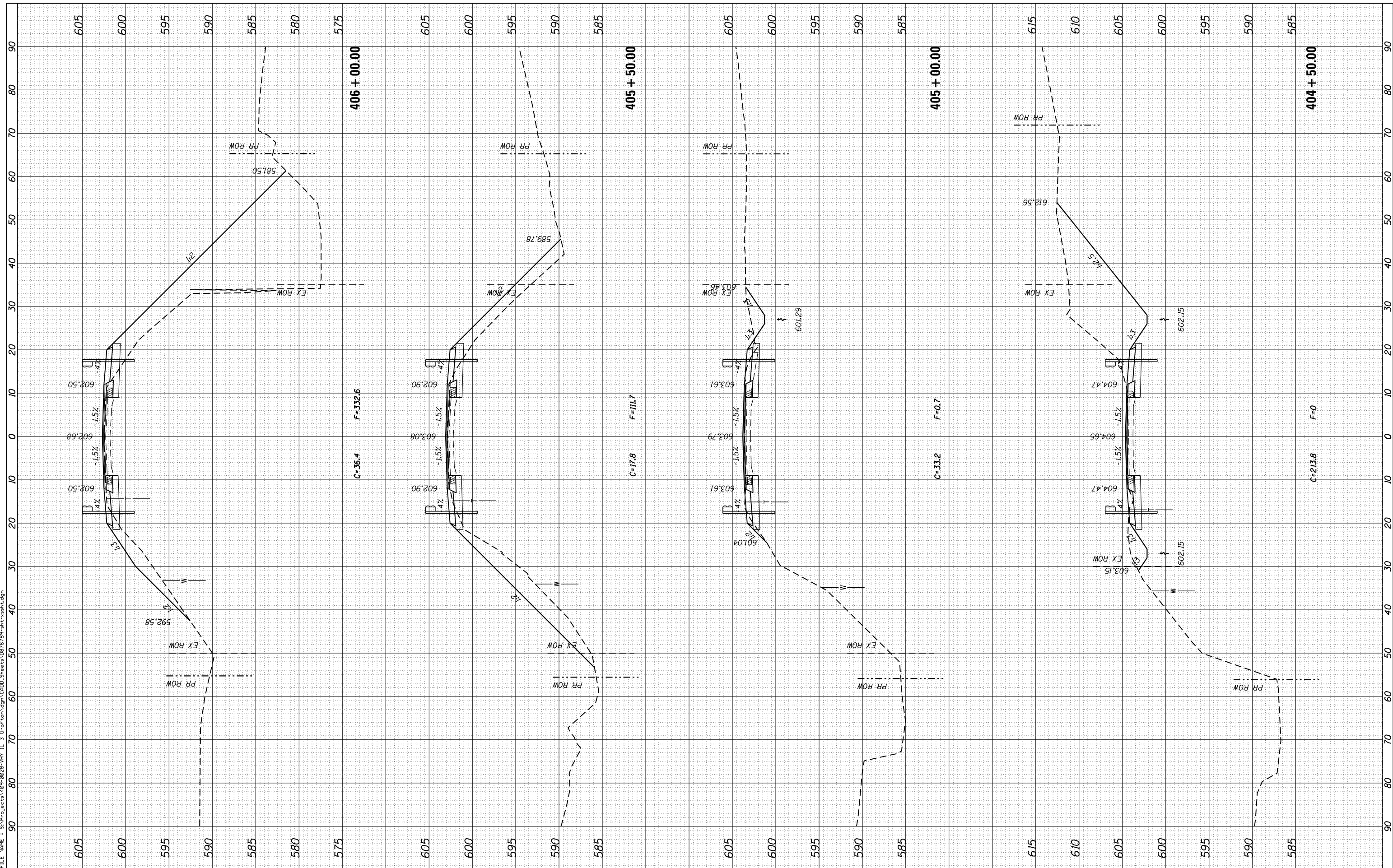


| | |
|----|------|
| BY | DATE |
| | |
| | |
| | |
| | |
| | |
| | |
| | |

| | |
|-----------------|---------------|
| ORIGINAL SURVEY | SURVEYED |
| NOTE BOOK | PLOTTED |
| | TEMPLATE |
| | AREAS CHECKED |
| | AREAS CHECKED |
| | AREAS CHECKED |
| | AREAS CHECKED |
| | AREAS CHECKED |

FILE NAME = S:\Projects\089-0029-VH-IL-3-Grat\csm\gpn\CADD-Sheets\0876789-8141-1-14-14.dgn



USER NAME = ljackson
 MODEL NAME = Default
 PLOT SCALE = 20.0000' / in.
 PLOT DATE = 8/11/2014

DESIGNED - ACM
 DRAWN - EDW
 CHECKED - LWJ
 DATE - 8-11-14

REVISED -
 REVISED -
 REVISED -
 REVISED -

**STATE OF ILLINOIS
 DEPARTMENT OF TRANSPORTATION**

**CROSS SECTIONS
 FAS ROUTE 752 (IL ROUTE 3)**
 SCALE: SHEET 129 OF 138 SHEETS STA. 404+50.00 TO STA. 406+00.00

| F.A. RTE. | SECTION | COUNTY | TOTAL SHEETS | SHEET NO. |
|---------------------------|-----------|--------|--------------------|-----------|
| • 749/752 | 101 2RS-1 | JERSEY | 438 | 423 |
| | | | CONTRACT NO. 76789 | |
| ILLINOIS FED. AID PROJECT | | | | |