

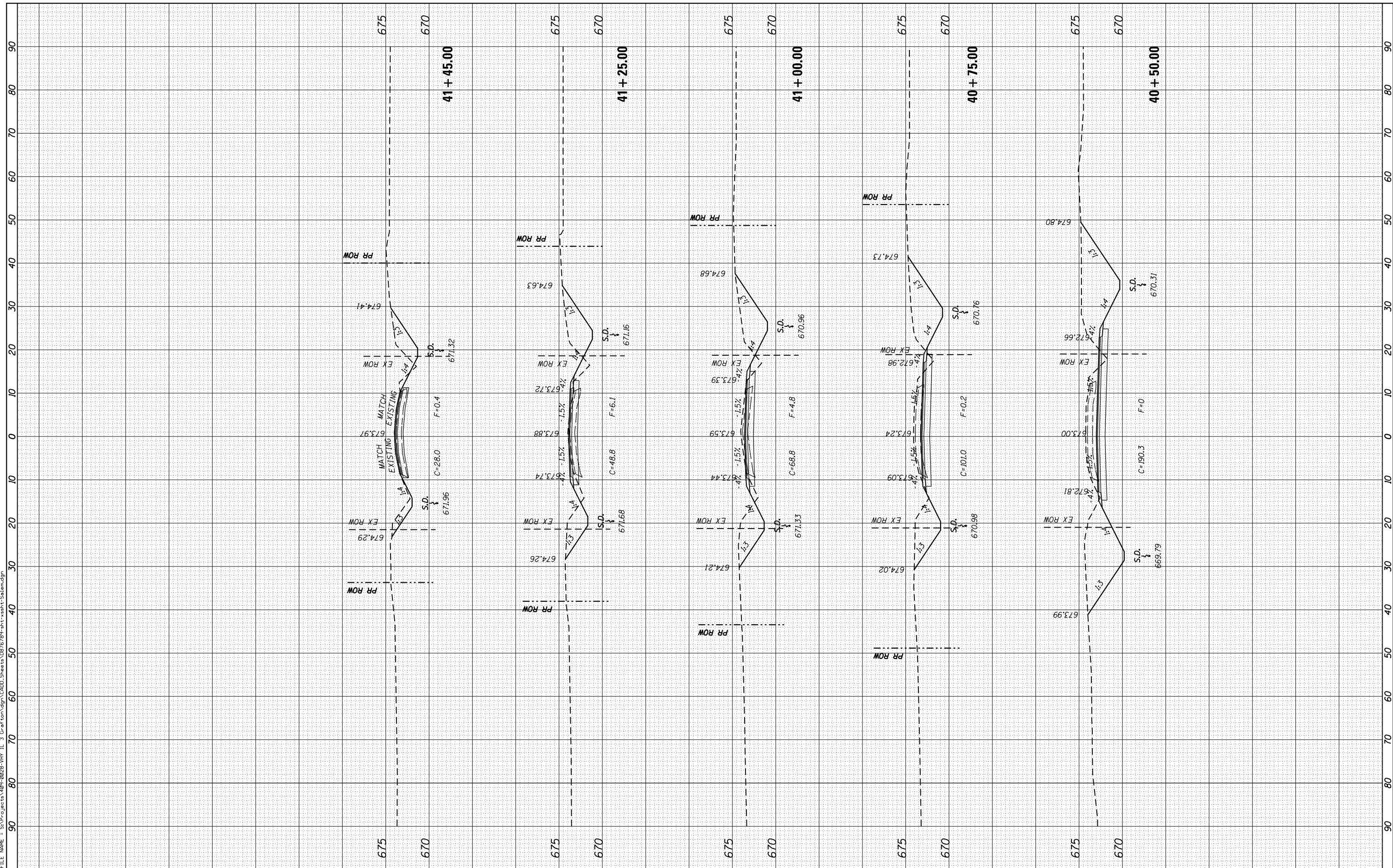
BY	DATE

BY	DATE

FILE NAME = S:\Projects\085-0228-VH-IL-3\Grat\top\top\CADD_Sheets\08576789-plt-wsht-Salem.dgn

ORIGINAL SURVEY	SURVEYED
NOTE BOOK	PLOTTED
NO.	AREAS CHECKED

FINAL SURVEY	SURVEYED
NOTE BOOK	PLOTTED
NO.	AREAS CHECKED



USER NAME =	ljackson
MODEL NAME =	Default
PLOT SCALE =	20.0000' / in.
PLOT DATE =	8/11/2014

DESIGNED -	ACM	REVISED -	
DRAWN -	EDW	REVISED -	
CHECKED -	LWJ	REVISED -	
DATE -	8-11-14	REVISED -	

**STATE OF ILLINOIS
DEPARTMENT OF TRANSPORTATION**

**CROSS SECTIONS
SALEM ROAD**

SCALE: SHEET 4 OF 6 SHEETS STA. 40+50.00 TO STA. 41+45.00

F.A. RTE.	SECTION	COUNTY	TOTAL SHEETS	SHEET NO.
•	101 2RS-1	JERSEY	438	436
•	749/752		CONTRACT NO. 76789	
ILLINOIS FED. AID PROJECT				