

**STATE OF ILLINOIS**  
**DEPARTMENT OF TRANSPORTATION**  
**DIVISION OF HIGHWAYS**  
**PROPOSED**  
**HIGHWAY PLANS**

**FAP ROUTE 690 (IL 160)**  
**SECTION 15-1**

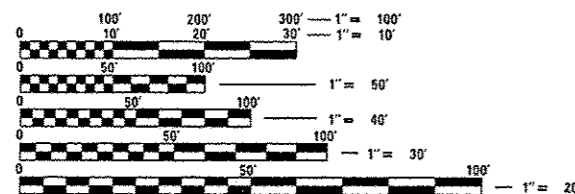
**CONCRETE PATCHING**  
**CLINTON COUNTY**  
**C-98-060-14**

F.A.P. RTE.	SECTION	COUNTY	TOTAL SHEETS	SHEET NO.
690	15-1	CLINTON	7	1
		ILLINOIS	CONTRACT NO. 76H33	

FOR INDEX OF SHEETS, SEE SHEET NO. 2

AADT: IL 160 - 5,400(2015)/6,800(2035) MU = 2.7% SU = 5.2%

BEGIN PROJECT: LAT. - 38°36'32.2"N  
LONG. - 89°41'13.6"W  
END PROJECT: LAT. - 38°37'03.6"N  
LONG. - 89°41'14.1"W

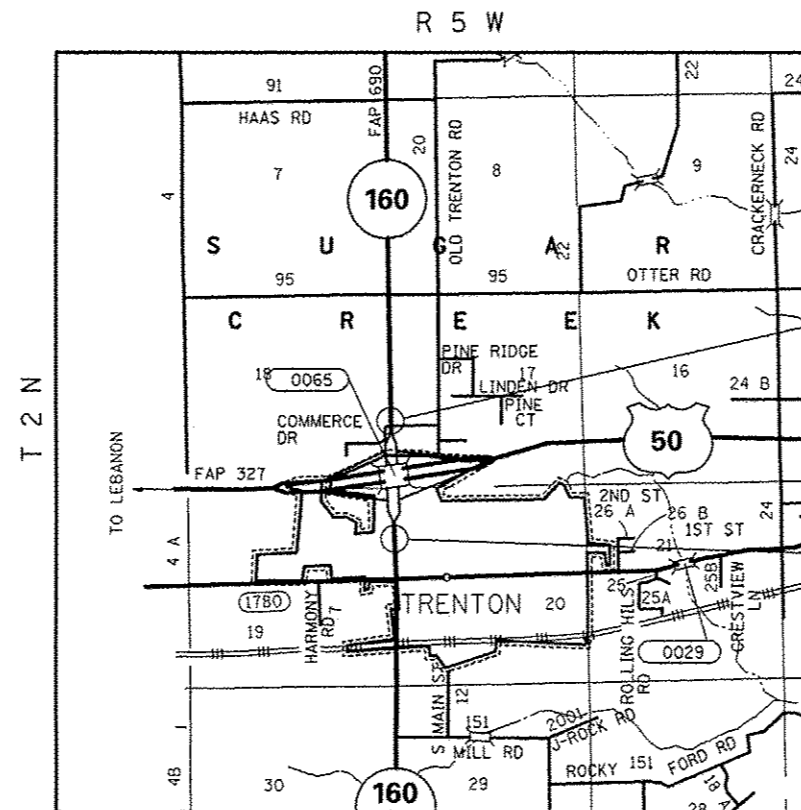


FULL SIZE PLANS HAVE BEEN PREPARED USING STANDARD ENGINEERING SCALES. REDUCED SIZED PLANS WILL NOT CONFORM TO STANDARD SCALES. IN MAKING MEASUREMENTS ON REDUCED PLANS, THE ABOVE SCALES MAY BE USED.

J.U.L.I.E.  
JOINT UTILITY LOCATION INFORMATION FOR EXCAVATION  
1-800-892-0123  
OR 811

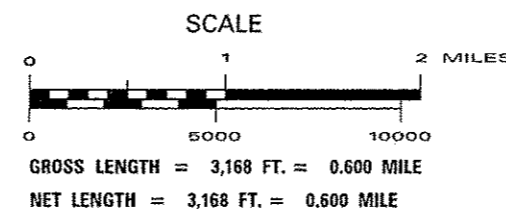
PROJECT ENGINEER: MICHAEL PRITCHETT (618) 346-3180  
DESIGN ENGINEER: BO WEDMORE (618) 346-3206

CONTRACT NO. 76H33



END PROJECT  
MILE 13.842

BEGIN PROJECT  
MILE 13.242



STATE OF ILLINOIS  
DEPARTMENT OF TRANSPORTATION  
DIVISION OF HIGHWAYS

SUBMITTED *July 25, 2014*  
*[Signature]*  
DEPUTY DIRECTOR OF HIGHWAYS, REGION ENGINEER

*Oct 17, 2014*  
*[Signature]*  
ENGINEER OF DESIGN AND ENVIRONMENT

*Oct 17, 2014*  
*[Signature]*  
DIRECTOR OF HIGHWAYS, CHIEF ENGINEER

**PRINTED BY THE AUTHORITY  
OF THE STATE OF ILLINOIS**