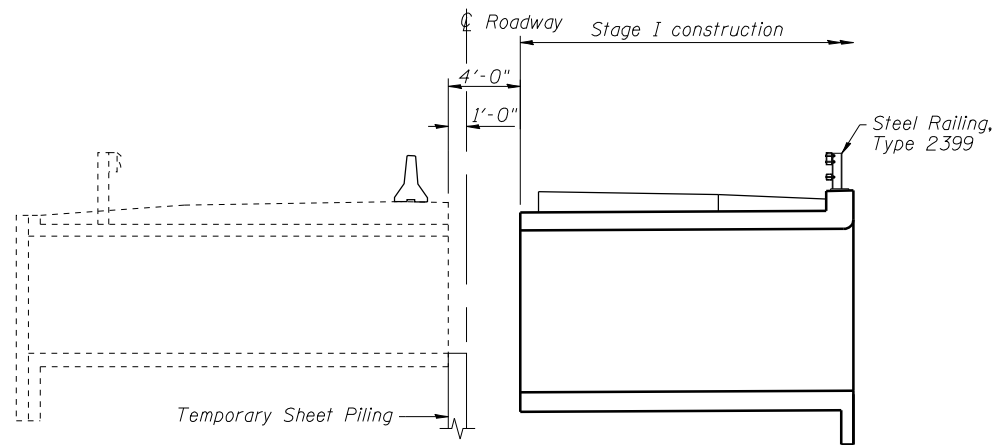
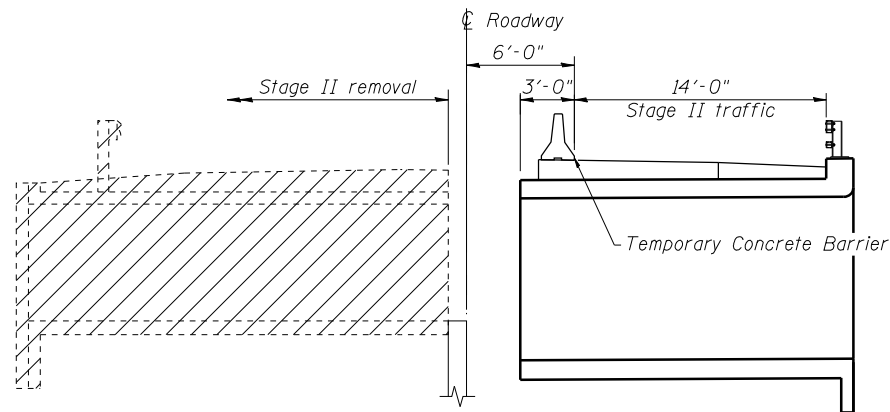


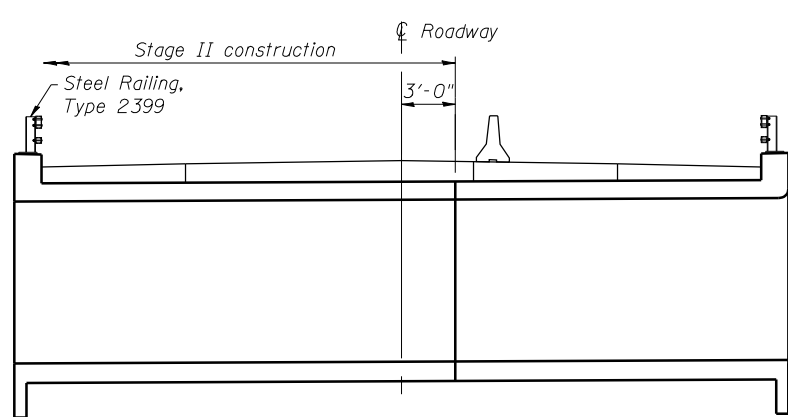
STAGE I REMOVAL



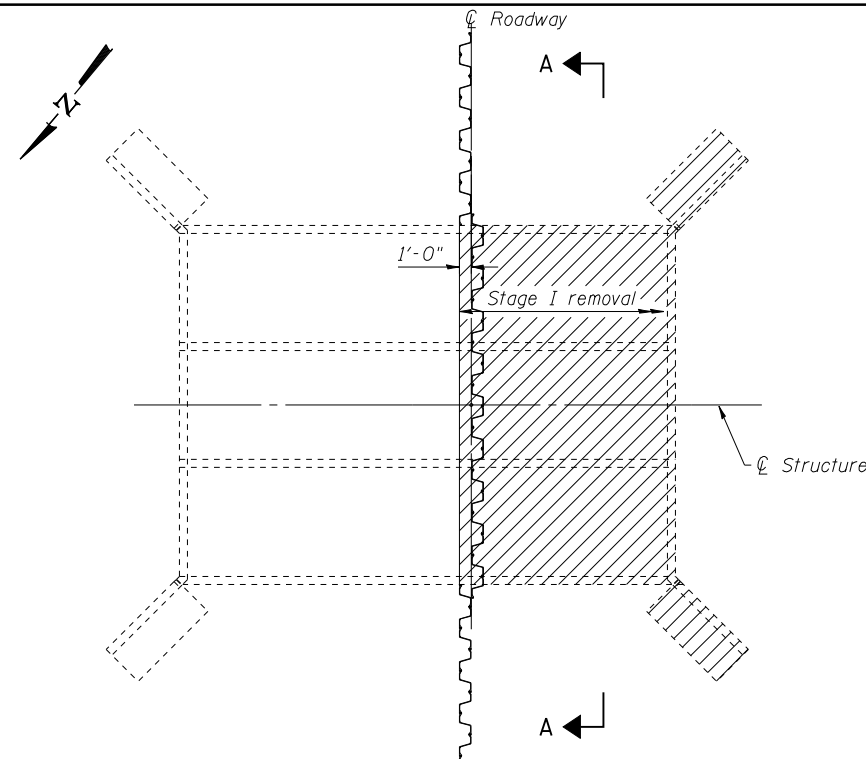
STAGE I CONSTRUCTION



STAGE II REMOVAL

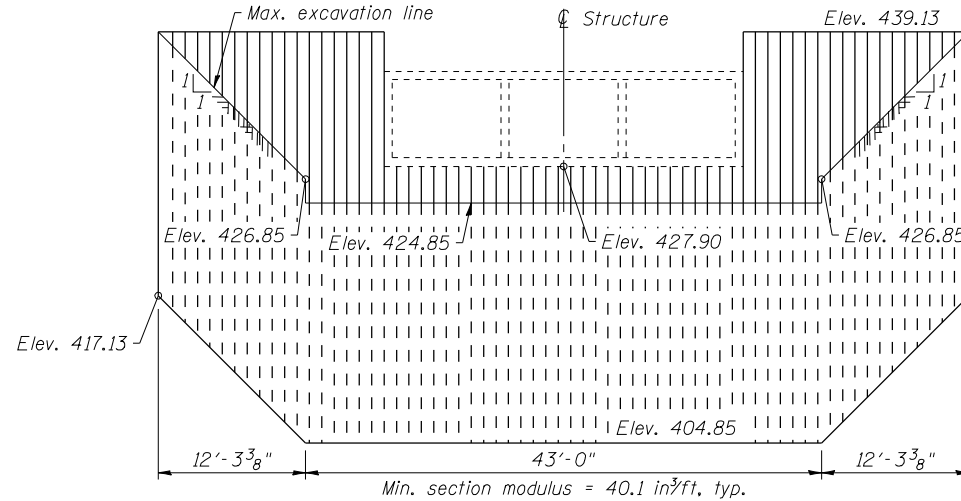


STAGE II CONSTRUCTION



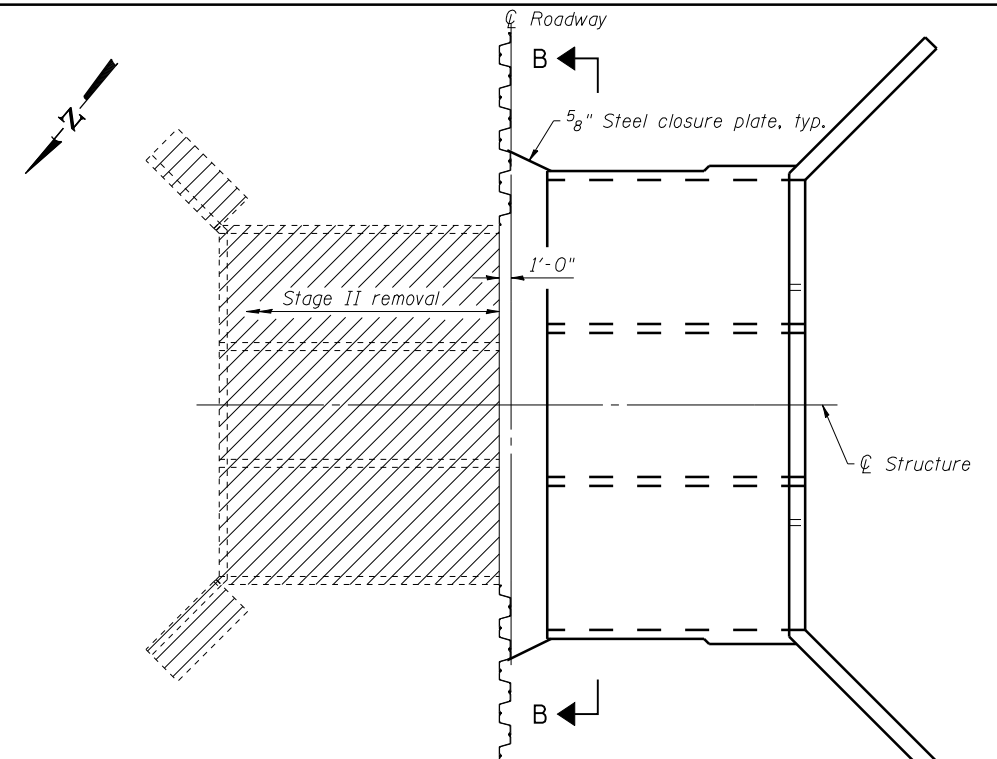
PLAN

(Showing stage I removal)



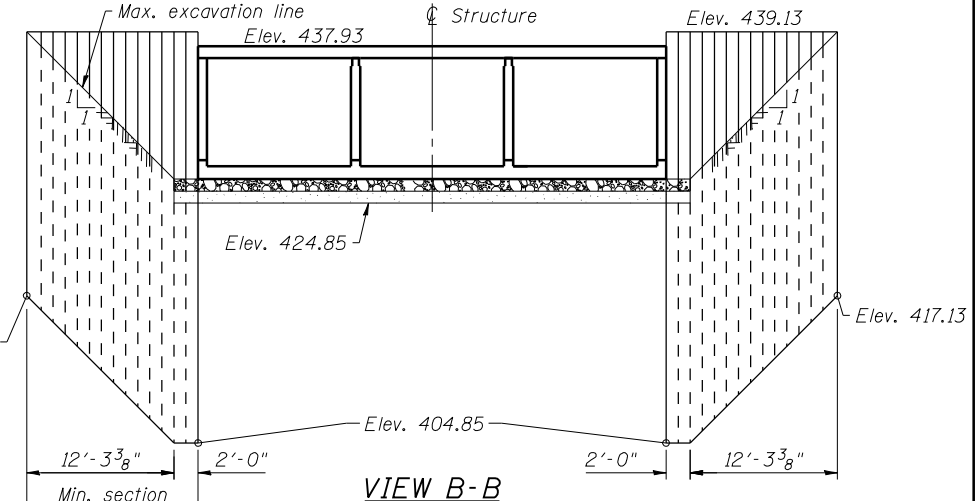
VIEW A-A

Showing Temporary Sheet Piling for Stage I Construction



PLAN

(Showing stage II removal)



VIEW B-B

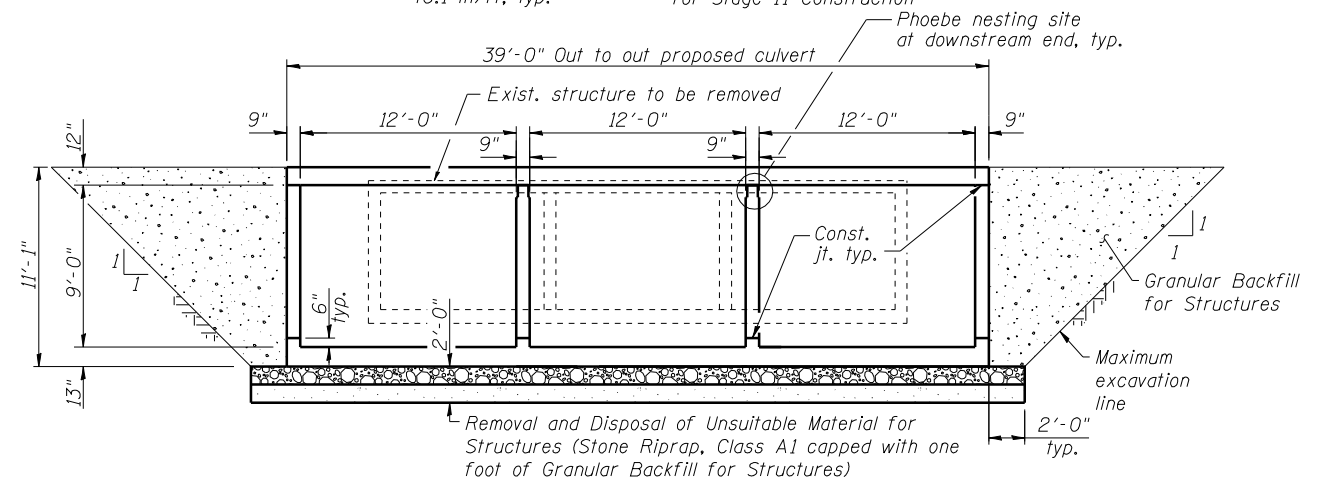
Showing Temporary Sheet Piling for Stage II Construction

STAGE CONSTRUCTION NOTES

1. All staging sections looking south.
2. Hatched areas indicate removal.
3. Removal of existing steel railing is included with Removal of Existing Structures.
4. See Roadway Plans for quantity of Temporary Concrete Barrier.

TEMPORARY SHEET PILING NOTES

1. If the Contractor chooses to alter the temporary cantilevered sheet piling design requirements shown on the plans, a design submittal including plan details and calculations will be required for review and acceptance by the Engineer.



SECTION THRU BARREL

PRINT DRIVER = LUD-EB@pdh.com
 SCALE: NONE
 FILE NAME = C:\PROJECTS\2014\07\14\113B-1.dwg
 PLOT DATE = 7/29/2014 9:56:35 AM



USER NAME = has	DESIGNED - JTS 01/12	REVISED -
ESCA PROJECT NO. 988.10	CHECKED - JAF/RDP 02/12	REVISED -
PLOT SCALE = 0.2" = 1' / IN.	DRAWN - HAS 02/12	REVISED -
PLOT DATE = 7/29/2014 9:56:35 AM	CHECKED - RDP 07/14	REVISED -

**STATE OF ILLINOIS
DEPARTMENT OF TRANSPORTATION**

**STAGE CONSTRUCTION DETAILS
STRUCTURE NO. 041-2021**

SHEET NO. 2 OF 9 SHEETS

F.A.P. RTE.	SECTION	COUNTY	TOTAL SHEETS	SHEET NO.
849	113B-1	JEFFERSON	36	23
CONTRACT NO. 78210				

ILLINOIS FED. AID PROJECT