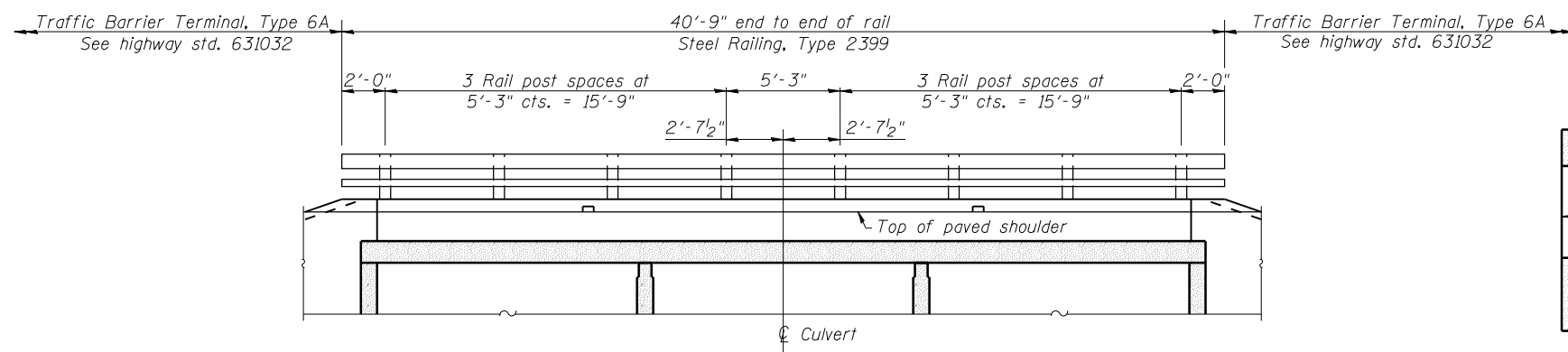


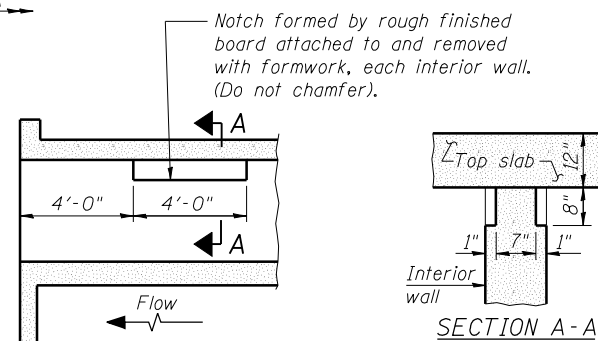
**BILL OF MATERIAL**

Bar	No.	Size	Length	Shape
a(E)	112	#7	40'-5"	
a1(E)	112	#7	26'-1"	
a2(E)	112	#5	9'-0"	
d(E)	76	#4	4'-5"	
d1(E)	48	#6	3'-4"	
d2(E)	72	#6	7'-6"	
h(E)	52	#6	18'-2"	
h1(E)	52	#6	24'-2"	
h2(E)	132	#5	18'-2"	
h3(E)	132	#5	24'-2"	
h4(E)	39	#4	18'-2"	
h5(E)	39	#4	24'-2"	
h6(E)	68	#9	8'-0"	
h7(E)	48	#9	19'-0"	
h8(E)	4	#6	37'-4"	
h9(E)	4	#6	39'-4"	
h10(E)	10	#6	38'-2"	
s(E)	38	#4	7'-7"	
s1(E)	38	#4	8'-1"	
v(E)	208	#5	10'-9"	
v1(E)	16	#4	14'-2"	
Concrete Box Culverts			Cu. Yd.	226.8
Reinforcement Bars, Epoxy Coated			Pound	36,660



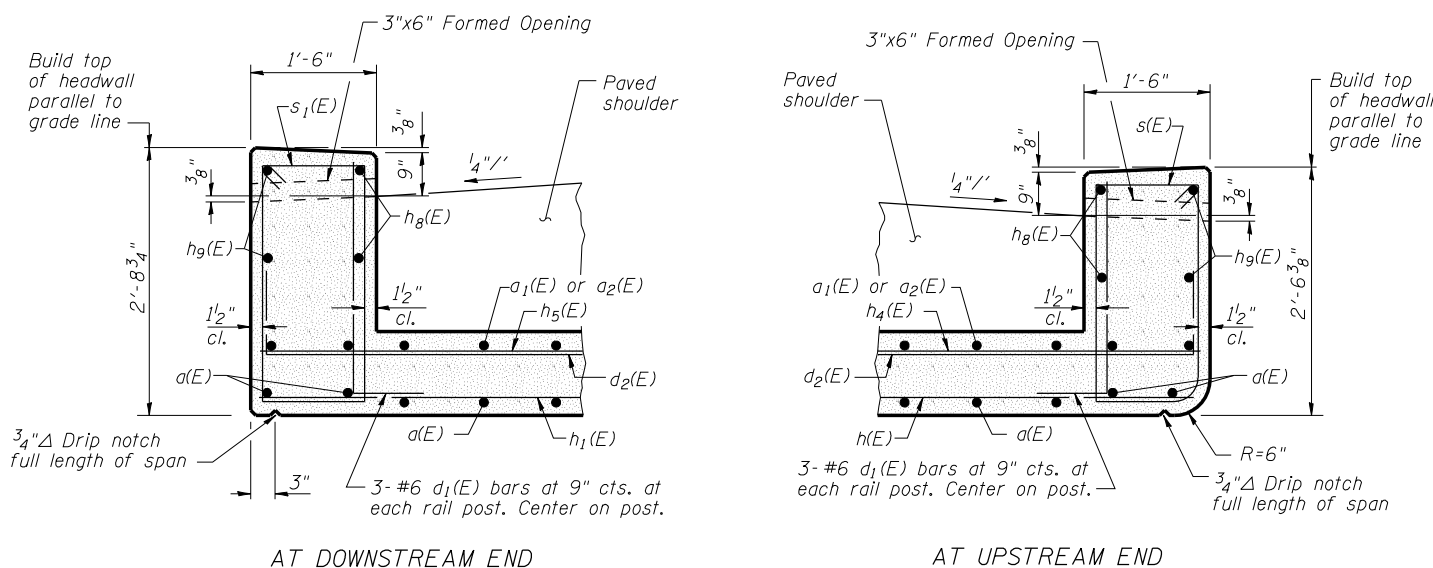
**INSIDE ELEVATION OF RAILING**

Note:  
See sheet 5 of 9 for railing details.

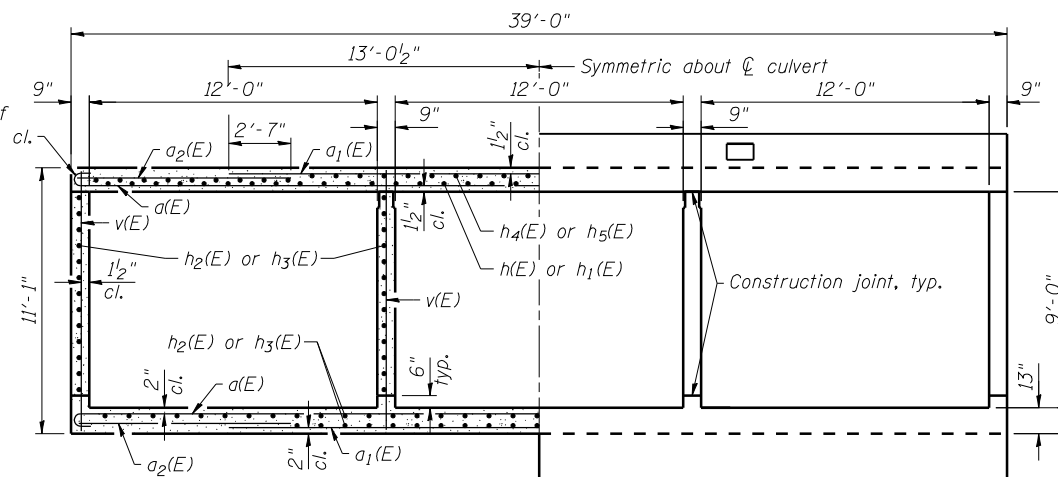


**LONGITUDINAL SECTION**

**PHOEBE NESTING  
SITE DETAILS**  
(Downstream end only)



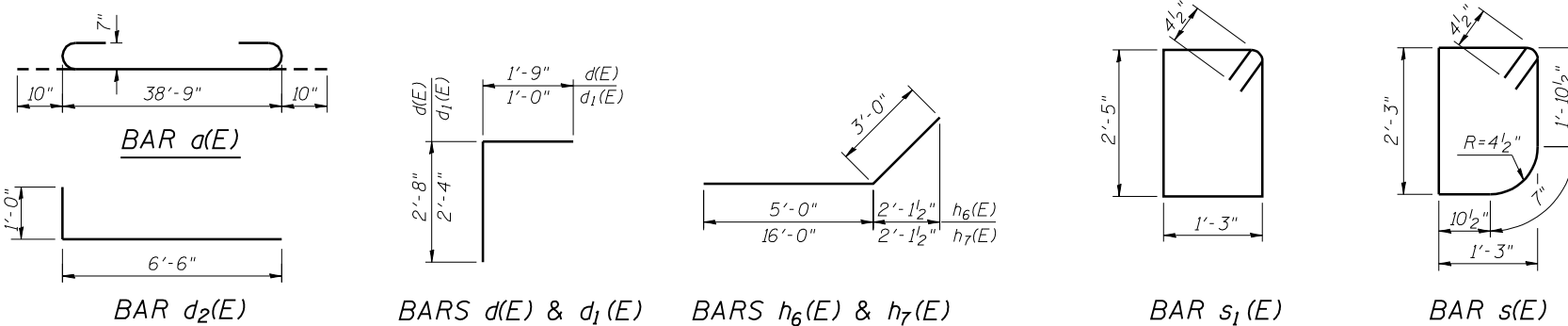
**HEADWALL DETAILS**



**SECTION THRU BARREL**

**HALF SECTION THRU BARREL**

**HALF END ELEVATION**



(Sheet 2 of 2)

PRINT DRIVER = L:\05-ESCA\041-2021\041-2021-02.dwg  
SCALE NAME = 1/4" = 1'-0"  
FILE NAME = 041-2021-02.dwg



USER NAME = has	DESIGNED - JTS 01/12	REVISED -
ESCA PROJECT NO. 988.10	CHECKED - JAF/RDP 02/12	REVISED -
PLOT SCALE = 1/4" = 1'-0"	DRAWN - HAS 02/12	REVISED -
PLOT DATE = 7/29/2014 9:58:49 AM	CHECKED - JTS 07/14	REVISED -

**STATE OF ILLINOIS  
DEPARTMENT OF TRANSPORTATION**

**BOX CULVERT DETAILS  
STRUCTURE NO. 041-2021**

SHEET NO. 4 OF 9 SHEETS

F.A.P. RTE.	SECTION	COUNTY	TOTAL SHEETS	SHEET NO.
849	113B-1	JEFFERSON	36	25
CONTRACT NO. 78210				

ILLINOIS FED. AID PROJECT AID