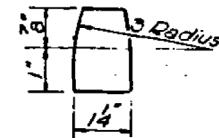
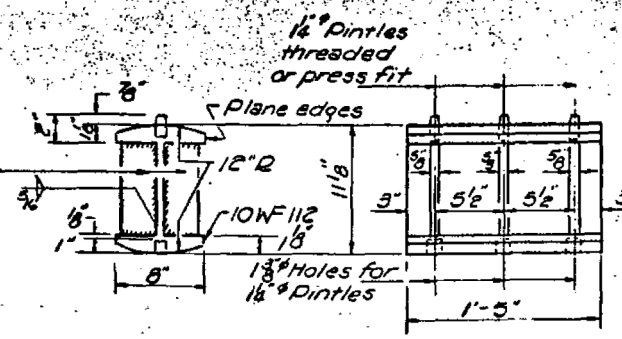


ELEVATION

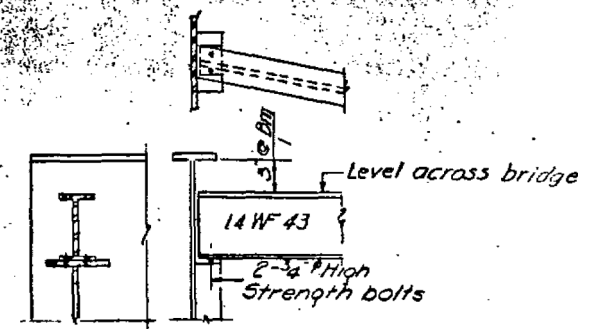
ELEVATION



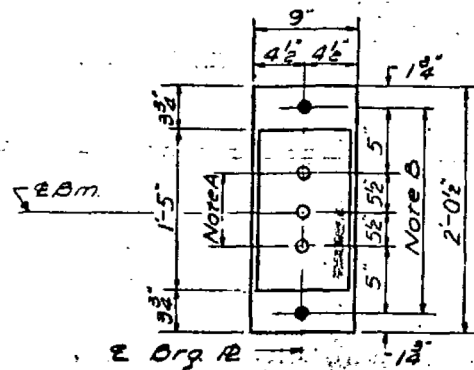
PINTLE



ROCKER

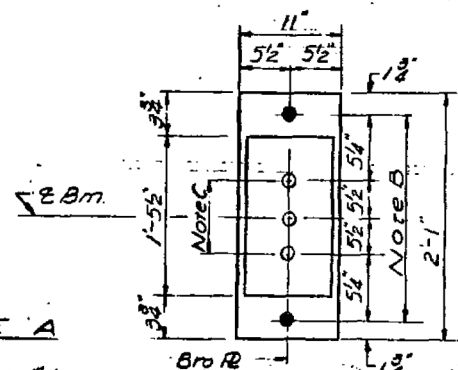


DIAPHRAGM D  
10 Required



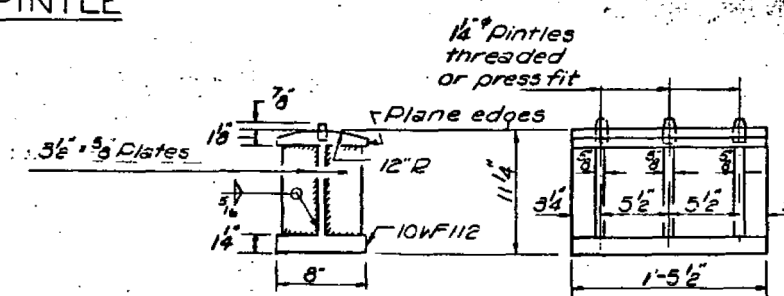
PLAN  
AT ABUTMENTS

NOTE A  
1 1/2 inch Holes 1 inch deep in top flange for pintles. Thread or press fit pintles in bottom flange.



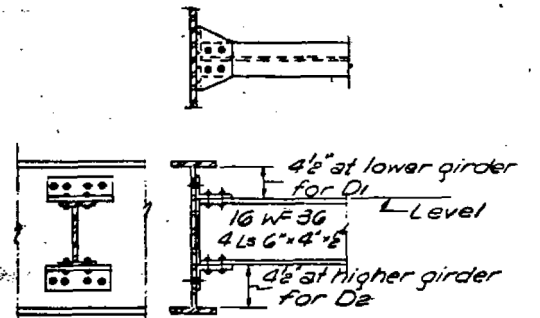
PLAN  
AT PIER

NOTE B  
1 1/2 inch Holes for 1 inch anchor bolts. 2 inch x 2 inch x 3/16 inch washers under cut.



BOLSTER

NOTE C  
1 1/2 inch Holes 1 inch deep in top flange only for 1 1/2 inch pintles.



DIAPHRAGMS D1 & D2  
D1 - 30 Required  
D2 - 15 Required

NOTES ON SETTING OF ANCHOR BOLTS AT EXPANSION BEARINGS

- a) D\* (Side of brg. away from fixed brg)  
D\* = 1/8 inch per each 100' of expansion for every 15° fall below the normal temperature of 50° F
- C\*\* (Side of brg. toward fixed brg)  
D\*\* = 1/8 inch per each 100' of expansion for every 15° rise above the normal temperature of 50° F
- b) After beams have been erected and dimensions D\* or D\*\* determined, holes shall be drilled and anchor bolts shall be grouted in place. All fixed anchor bolts may be built into the masonry.

TABLE OF MOMENTS SHEARS & REACTIONS - INTERIOR BEAMS					
MOMENTS (Ft-Kip)			REACTIONS (Kips)		
	0.4 Span 1		PIER	Abut.	PIER
D.L.	619	D.L.	1472	36	132
S.D.L.	233	S.D.L.	354	12	39
L.L.	906	L.L.	733	46.5	75
Imp.	207	Imp.	170	10.7	17
Total	1346	Total	2729	105.2	263

SHEAR (Kips)				
	Abut	1/4	1/2	3/4
S.D.L.	12.2	4.3	-3.6	-11.5
L.L.	46.0	31.5	-26.0	-39.0
Imp.	10.8	7.2	-5.9	-9.1
Total	69.0	43.0	-35.5	-59.6

PROPERTIES	
STEEL SECTION @ 0.4 I	
I <sub>s</sub>	19,742 in <sup>4</sup>
S <sub>ts</sub>	680 in <sup>3</sup>
S <sub>bs</sub>	955 in <sup>3</sup>
COMPOSITE SECTION	
I <sub>c</sub>	51,418 in <sup>4</sup>
S <sub>tc</sub>	4,950 in <sup>3</sup>
S <sub>bc</sub>	1,300 in <sup>3</sup>

TOP OF WEB ELEVATIONS						
	Beam 1	Beam 2	Beam 3	Beam 4	Beam 5	Beam 6
E Brg. W. Abut.	486.81	486.98	487.12	487.12	487.02	486.86
E Splice 1	487.16	487.34	487.47	487.47	487.37	487.21
E Pier	487.30	487.47	487.61	487.61	487.51	487.35
E Splice 2	487.44	487.61	487.75	487.75	487.65	487.49
E Brg. E. Abut.	487.82	487.99	488.13	488.13	488.03	487.87

(For fabrication only)

DESIGNED: Emil A. Jarama  
CHECKED: Halbold Singh  
DRAWN: C.E. Wilkins  
CHECKED: H.S.

APPROVED: Richard H. Groteman  
DATE: APRIL 28 1968

FOR INFORMATION ONLY

BEARING DETAILS  
FAI RT. 64 SEC. 41-8HB-3  
JEFFERSON COUNTY  
STA. 2857+33.25