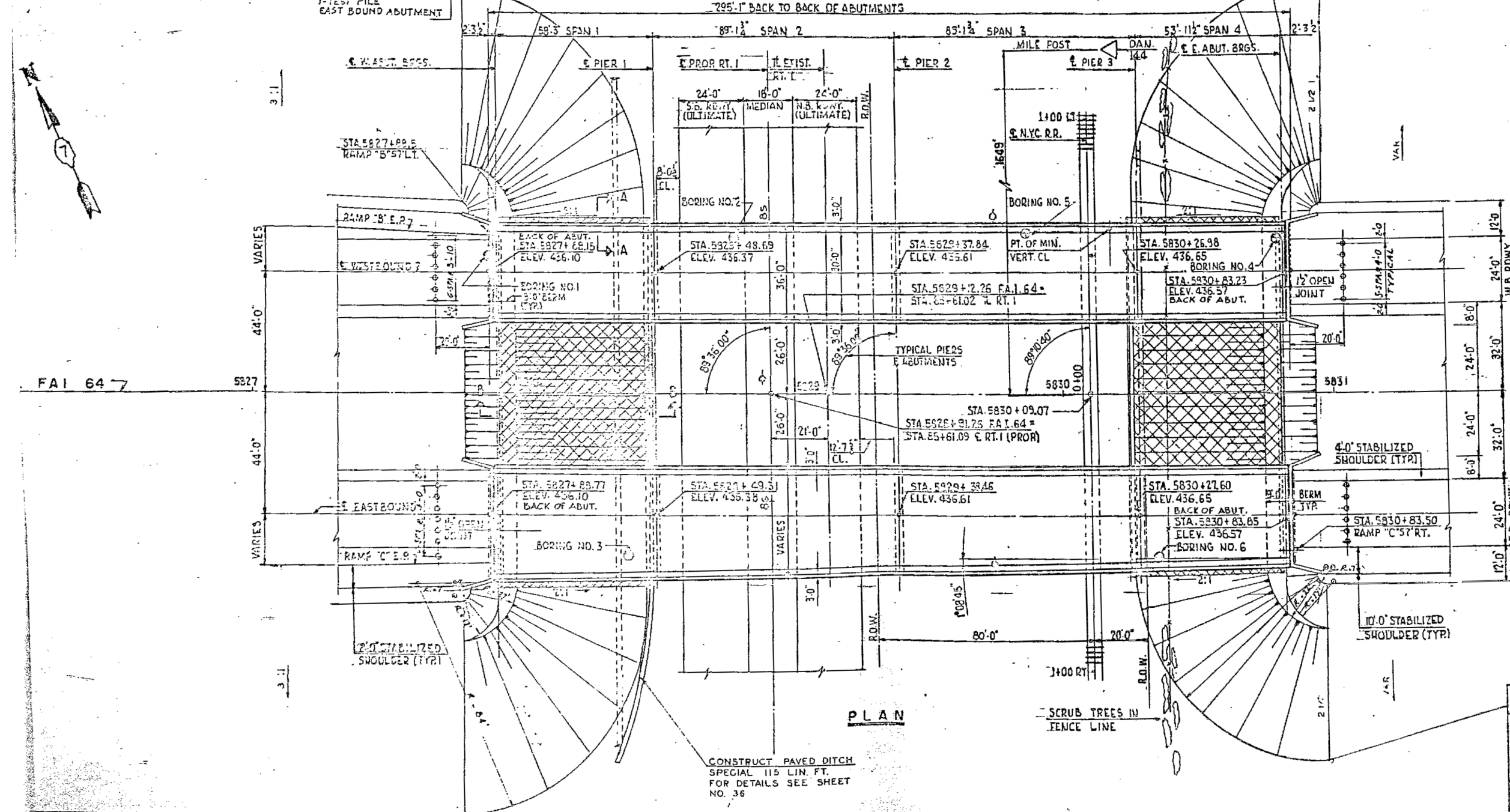
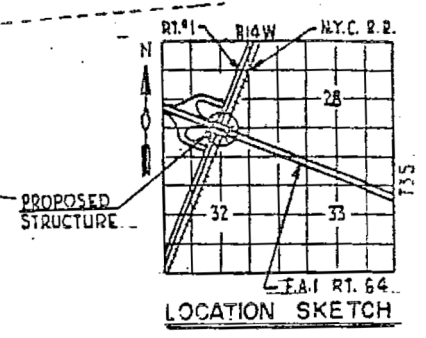
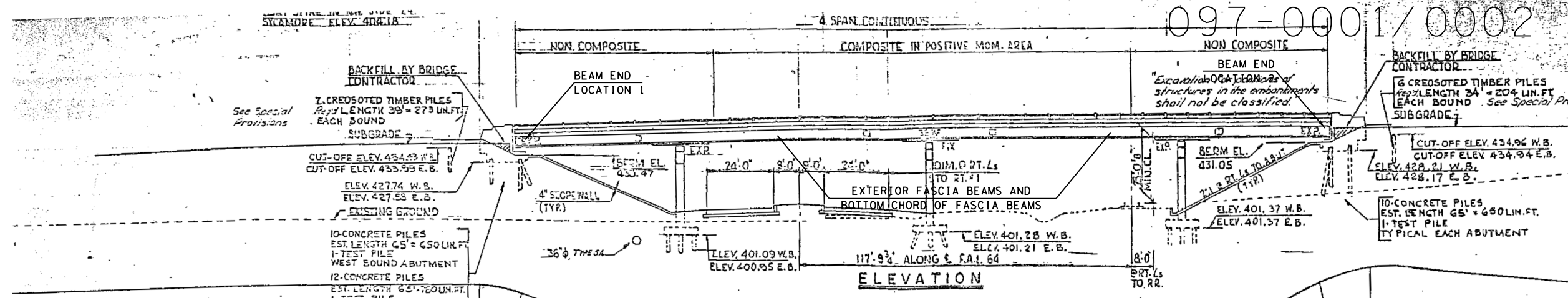


097-0001/0002

F.A. RTE. NO.	SECTION	COUNTY	TOTAL SHEETS	SHEET NO.
64	97-2 HVB	WHITE	150	37



APPROVED
FOR STRUCTURAL ADEQUACY ONLY

Paul E. ...
Engineer of Bridge & Traffic Structures



CONSOER, TOWNSEND & ASSOCIATES
CONSULTING ENGINEERS CHICAGO, ILLINOIS

ILLINOIS DIVISION OF HIGHWAYS
F.A.I. RT. 64 OVER RT. 1 & N.Y.C. R.R.
SECTION 97-2 HVB
WHITE COUNTY STA. 5828 + 91.2 E

GENERAL PLAN & ELEVATION

DESIGNED	DRAWN	CHECKED	DATE
L.S.	I.H.	I.H.	L.D.B. C.W.W.

FOR INFORMATION ONLY

FILE NAME	USER NAME	DESIGNED	REVISIONS	STATE OF ILLINOIS DEPARTMENT OF TRANSPORTATION	PROJECT	SCALE	SHEET	OF	SHEETS	STA.	TO	STA.	F.A. RTE.	SECTION	COUNTY	TOTAL SHEETS	SHEET NO.
Default	Dahmer,ja				SN 097-0001 & SN 097-0002								D9	BRIDGE PAINT 2015-1	VARIOUS	23	17