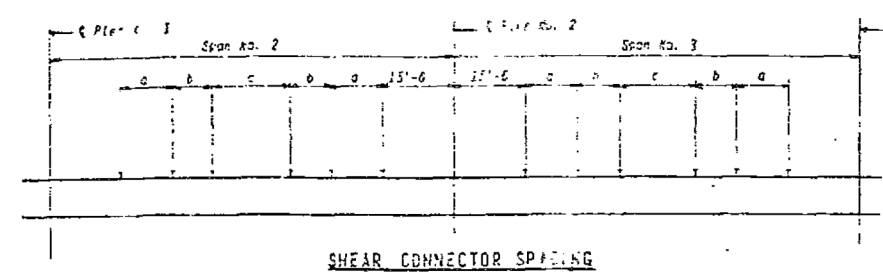
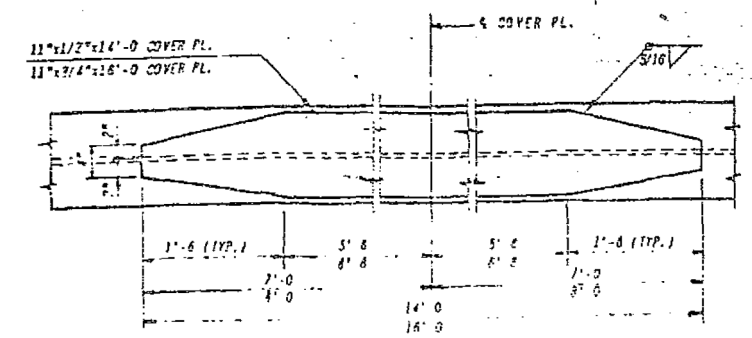
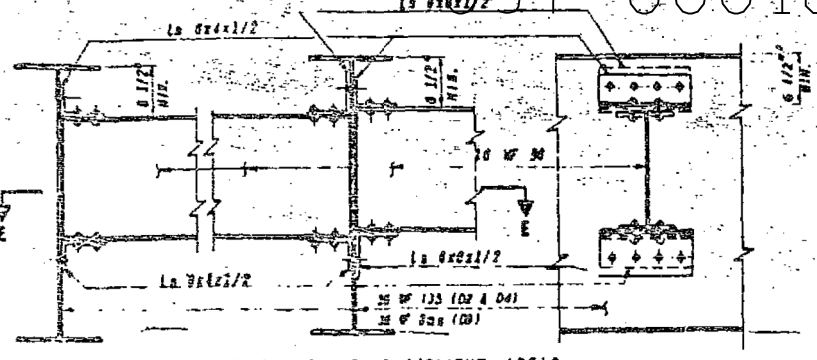
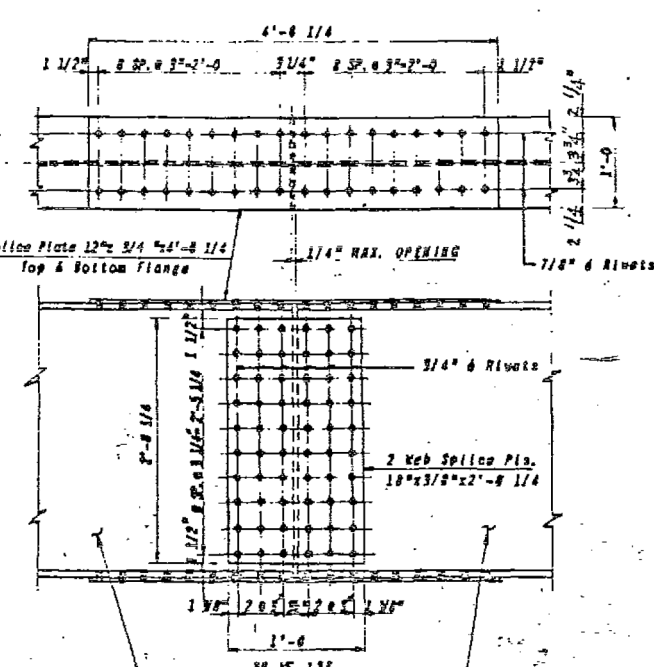
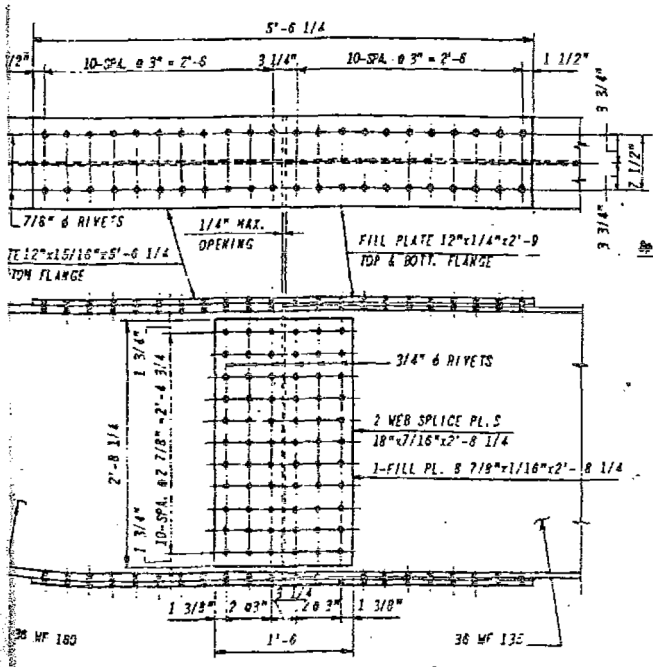


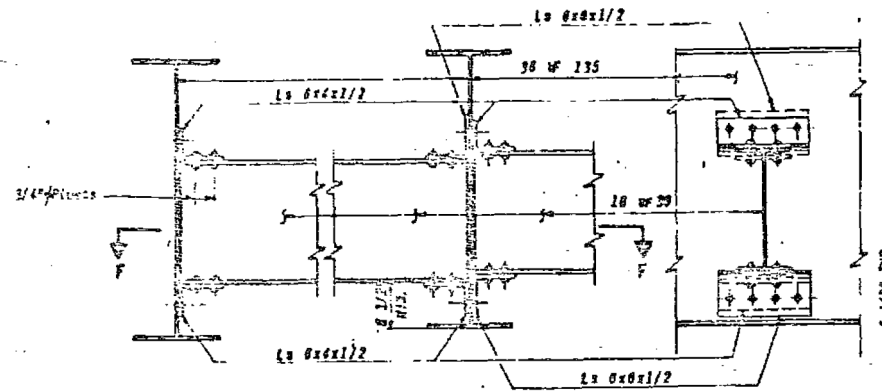
ALL SHEET NO.	SECTION	COUNTY	TOTAL SHEETS	SHEET NO.
60	97-2 HYB	WHITE	150	50
FEDERAL ROAD DISTRICT NO.			DESIGNER	DATE



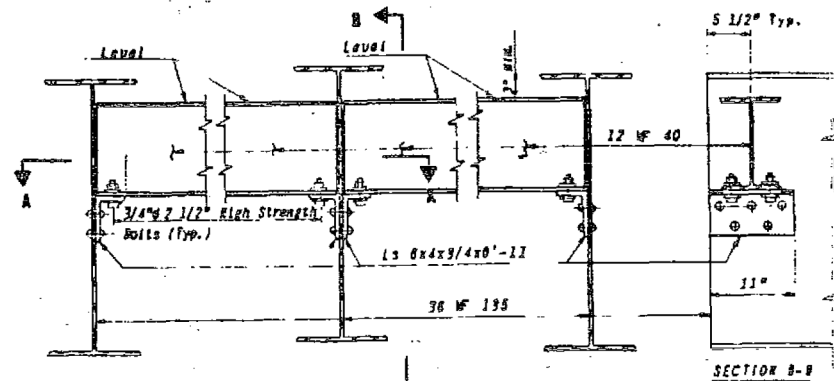
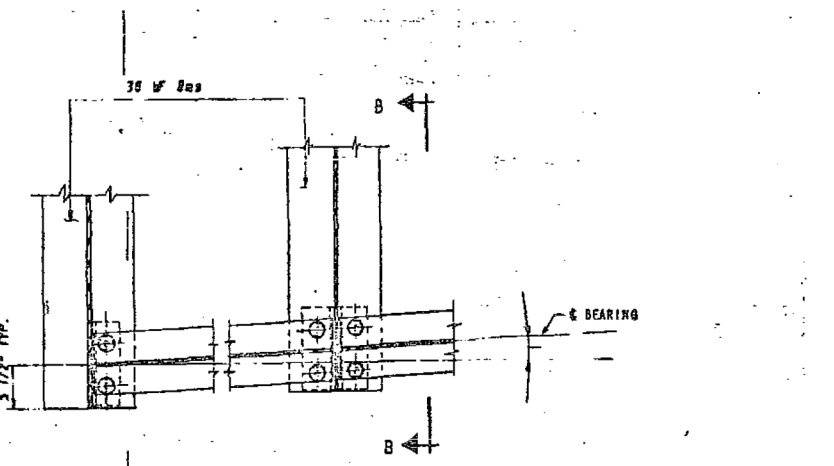
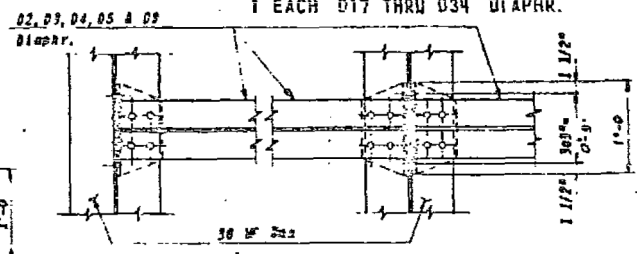
WEST BOUND	EAST BOUND	a	b	c
A & F	A & G	-	-	29 Sp. @ 2'-0 5/8"-0
B thru E	B thru F	15 Sp. @ 3'-11"-3	9 Sp. @ 12'-9"-0	14 Sp. @ 1'-3-17"-4



20 - D2 DIAPHR.  
16 - D7 DIAPHR.  
1 EACH D8 THRU D15 DIAPHR.

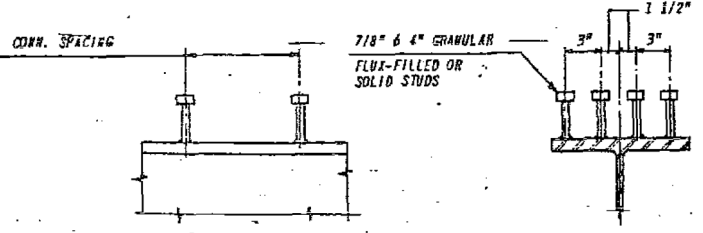


45 - D3 DIAPHR.  
36 - D16 DIAPHR.  
1 EACH D17 THRU D34 DIAPHR.



END DIAPHRAGMS  
10 - D1 DIAPHR.  
8 - D4 DIAPHR.  
2 - D5 DIAPHR.  
2 - D6 DIAPHR.

TOTAL COMPUTED WEIGHT OF FRAMING STRUCTURAL STEEL 647,180 LBS.



NOTE: \* Includes Framing Steel 621,250 Lbs., Bearing Devices 19,430 Lbs., Shear Connectors 6,500 Lbs.

\* Stud shear connectors on the beam flanges shall be placed in the field after the steel has been erected and the deck forms are in place.  
\* Flange shear connectors are included in the quantity of structural steel. Minimum required = 5,970.

CONSOER, TOWNSEND & ASSOCIATES CONSULTING ENGINEERS CHICAGO, ILL.

ILLINOIS DIVISION OF HIGHWAYS  
F.A.I. RT. 64 OVER RT. 1 & N.Y.C. R.R.  
SECTION 97-2 HYB  
WHITE COUNTY STA. 582B+5

STRUCTURAL STEEL FRAMING DETAIL  
L.S. E.M. E.M. L.D.B. C.W.W.

FILE NAME =	USER NAME = Dahmer,ja	DESIGNED -	REVISED -
et:\pw\work\p1dot\dahmer,ja\0392003\78428-sh1-plan.dgn		DRAWN -	REVISED -
Default	PLOT SCALE = 100.0000 / in.	CHECKED -	REVISED -
	PLOT DATE = 8/15/2014	DATE -	REVISED -

STATE OF ILLINOIS  
DEPARTMENT OF TRANSPORTATION

SN 097-0001 & SN 097-0002

SCALE: SHEET OF SHEETS STA. TO STA.

F.A. RTE.	SECTION	COUNTY	TOTAL SHEETS	SHEET NO.
VAR.	D9 BRIDGE PAINT 2015-1	VARIOUS	23	19
CONTRACT NO. 78428				
ILLINOIS FED. AID PROJECT				

FOR INFORMATION ONLY