

F.A.I. RTE.	SECTION	COUNTY	TOTAL SHEETS	SHEET NO.
1-57	(41-4,41-4-1)RS-2	JEFFERSON	26	1
ILLINOIS			CONTRACT NO. 78437	

STATE OF ILLINOIS  
DEPARTMENT OF TRANSPORTATION  
DIVISION OF HIGHWAYS

# PROPOSED HIGHWAY PLANS

FAI ROUTE 57 (I-57)  
SECTION (41-4,41-4-1)RS-2  
PROJECT ACNHPP - 0057 (311)  
INTERSTATE RESURFACING  
JEFFERSON COUNTY

D-99-058-14



FOR INDEX OF SHEETS, SEE SHEET NO. 3

TRAFFIC DATA

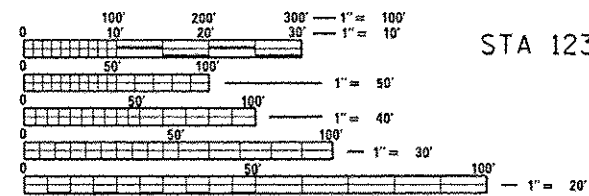
	2014	2034
PV	10705	14420
SU	850	1160
MU	6700	9160
ADT	18100	24740

42% TRUCKS

TOWNSHIPS

ROME

C-99-066-14



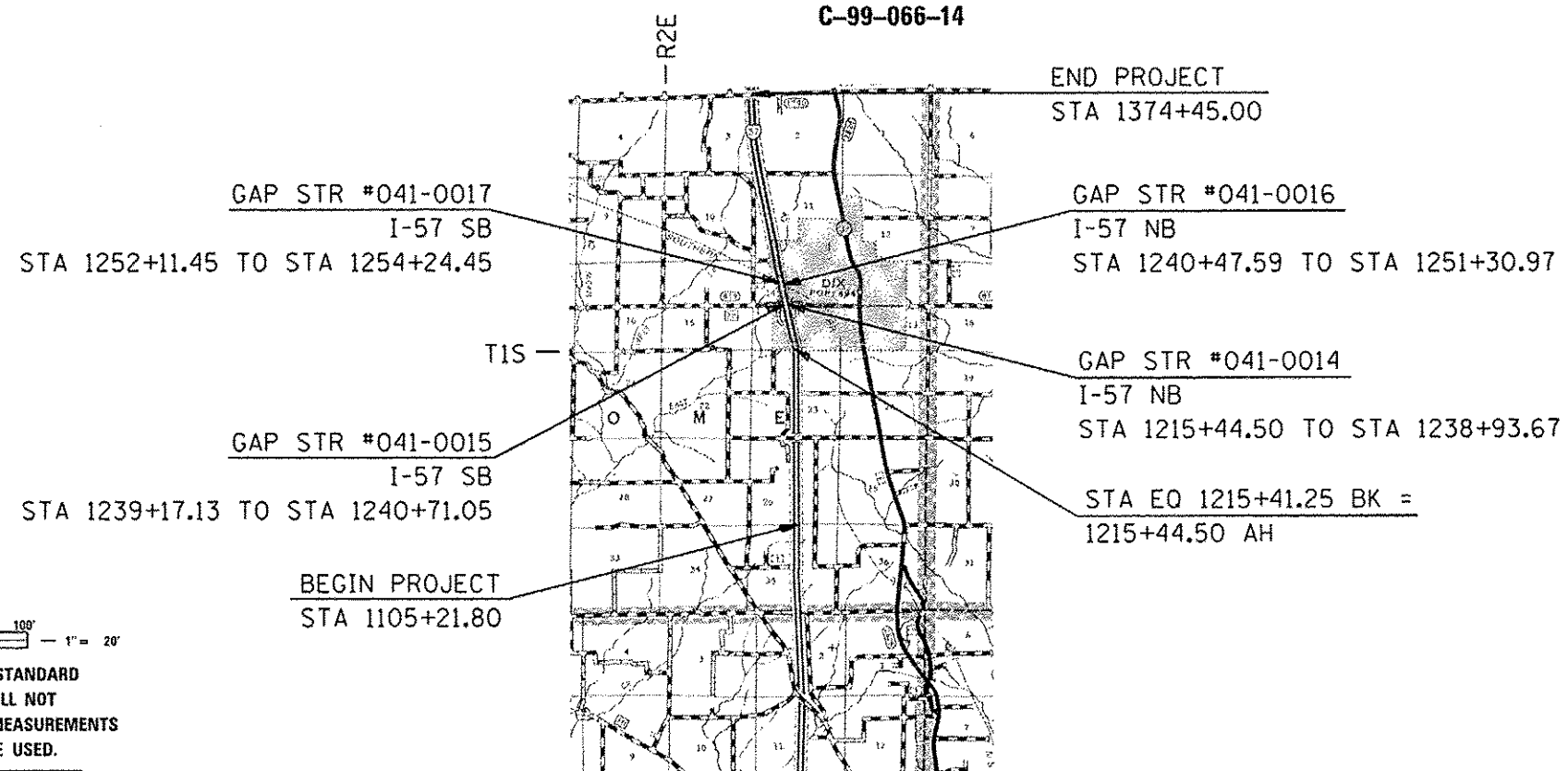
FULL SIZE PLANS HAVE BEEN PREPARED USING STANDARD ENGINEERING SCALES. REDUCED SIZED PLANS WILL NOT CONFORM TO STANDARD SCALES. IN MAKING MEASUREMENTS ON REDUCED PLANS, THE ABOVE SCALES MAY BE USED.

J.U.L.I.E.  
JOINT UTILITY LOCATION INFORMATION FOR EXCAVATION  
1-800-892-0123  
OR 811

DESIGNER: VALERIE ROLLA  
PROJECT MANAGER: CHARLES STEIN

CONTRACT NO. 78437

GROSS LENGTH = 26919.95 FT. = 5.1 MILE  
NET LENGTH = 26553.95 FT. = 5.03 MILE



STATE OF ILLINOIS  
DEPARTMENT OF TRANSPORTATION  
DIVISION OF HIGHWAYS

SUBMITTED August 22, 2014  
*Gregory L. Kuen*  
DEPUTY DIRECTOR OF HIGHWAYS, REGION ENGINEER

Oct 17, 2014  
*John D. Baranzelli, P.E.*  
ENGINEER OF DESIGN AND ENVIRONMENT

Oct 17, 2014  
*Omer Osman, P.E.*  
DIRECTOR OF HIGHWAYS, CHIEF ENGINEER

PRINTED BY THE AUTHORITY  
OF THE STATE OF ILLINOIS