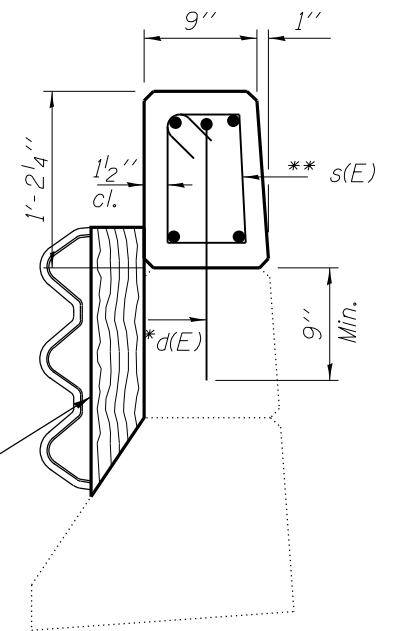
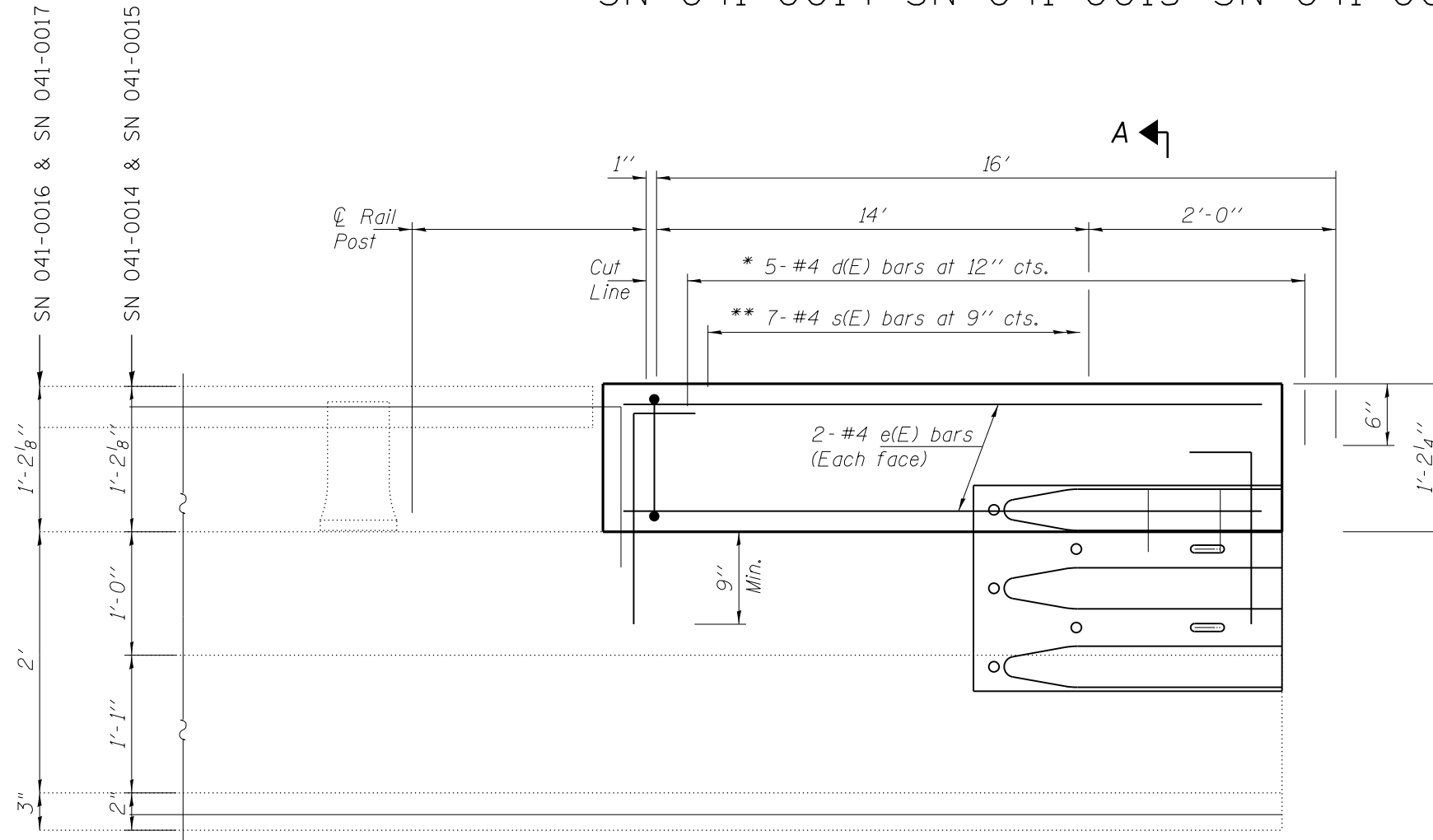


# PARAPET DETAILS

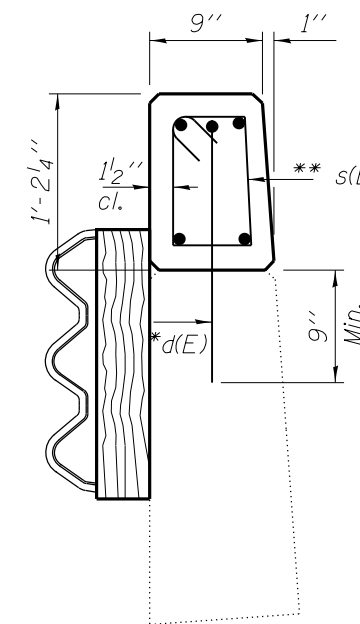
SN 041-0014 SN 041-0015 SN 041-0016 SN 041-0017



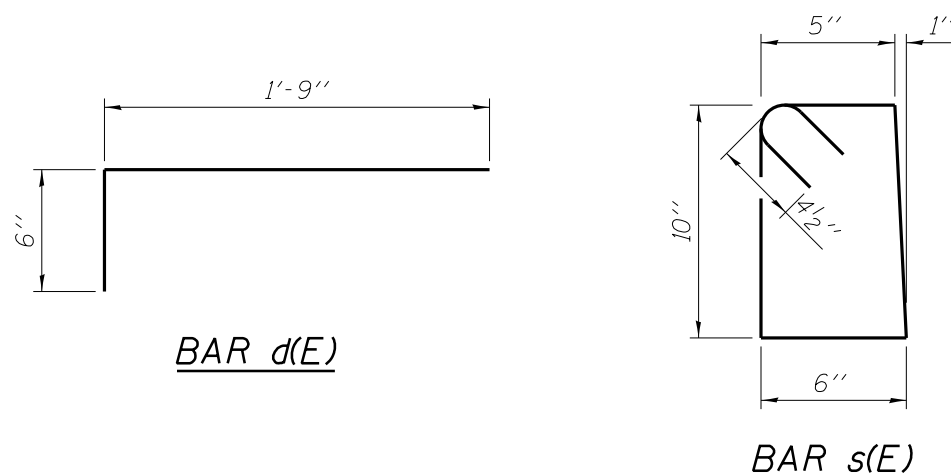
Additional modification of wood blockouts required on structures 041-0014 & 041-0015. Modification shall be included in the cost of TRAFFIC BARRIER TERMINAL, TYPE 6B.

**SECTION A-A**  
(STR #041-0014 & 041-0015)

## INSIDE ELEVATION OF PARAPET



**SECTION A-A**  
(STR # 041-0016 & 041-0017)



\* d(E) bars to be epoxy grouted in 7/8"φ x 9" minimum holes. Cut in field as required.

\*\* Tilt s(E) bars as needed to fit.

**Note**  
To be used: All sections where proposed Traffic Barrier Terminal, Type 6B will tie into existing parapet wall (12 locations total). (See Highway Standard 631033-05)

## BILL OF MATERIAL

Bar	No.	Size	Length	Shape
d	15	#5	2'-3"	U
e	5	#4	15'-9"	—
s	21	#4	3'-4"	□
Concrete Parapet			Cu. Yd.	0.49
Reinforcement Bars			Pound	134.6

## TOTAL BILL OF MATERIAL

Bar	No.	Size	Length	Shape
d	180	#5	2'-3"	U
e	60	#4	15'-9"	—
s	252	#4	3'-4"	□
Concrete Parapet			Cu. Yd.	5.88
Reinforcement Bars			Pound	1615.2

FILE NAME =	USER NAME = \$USER\$	DESIGNED -	REVISED -
c:\pwwork\pwwork\vol1avr\d0401961\78437	shite-cvr-soq-index.dgn	DRAWN -	REVISED -
\$MODELNAME\$	PLOT DATE = 8/22/2014	CHECKED -	REVISED -
		DATE -	REVISED -

STATE OF ILLINOIS  
DEPARTMENT OF TRANSPORTATION

SCALE: SHEET OF SHEETS STA. TO STA.

F.A.I. RTE.	SECTION	COUNTY	TOTAL SHEETS	SHEET NO.
I-57	(41-4,41-4-IIRS-2	JEFFERSON	26	25
CONTRACT NO. 78437			ILLINOIS FED. AID PROJECT	