

11-21-14 LETTING ITEM 126

STATE OF ILLINOIS  
DEPARTMENT OF TRANSPORTATION  
**PLANS FOR PROPOSED  
LOCAL AGENCY PROJECT**  
ILLINOIS TRANSPORTATION ENHANCEMENT PROGRAM  
**SIDEWALK IMPROVEMENTS**  
SECTION 10-00005-00-SW  
PROJECT NO. **TE-0008(162)**  
VILLAGE OF SANDOVAL, MARION COUNTY, ILLINOIS  
JOB NO. **C-98-314-11**

ROUTE	SECTION	COUNTY	TOTAL SHEETS	SHEET NUMBER
NA	10-00005-00-SW	MARION	12	1
SANDOVAL, ILLINOIS			FEDERAL AID PROJECT CONTRACT 97501	

**SHEET INDEX**

1. COVER SHEET
2. SUMMARY OF QUANTITIES & GENERAL NOTES
3. SHEET INDEX MAP
- 4-12. PLAN SHEETS

**HIGHWAY STANDARDS**

- 000001-06 STANDARD SYMBOLS, ABBREVIATIONS AND PATTERNS
- 280001-07 TEMPORARY EROSION CONTROL SYSTEMS
- 424001-07 CURB RAMPS FOR SIDEWALKS, PERPENDICULAR
- 424026-01 ENTRANCE/ALLEY PEDESTRIAN CROSSINGS
- 608001-05 CONCRETE CURB & GUTTER, TYPE B
- 701501-06 URBAN LANE CLOSURE, 2L, 2W, UNDIVIDED
- 701801-05 SIDEWALK CORNER OR CROSSWALK CLOSURE
- 701901-03 TRAFFIC CONTROL DEVICES

**UTILITIES**

**ELECTRIC AND GAS**

AMEREN IP  
300 LIBERTY STREET, PEORIA, ILLINOIS 61602  
800-232-2477

**CABLE**

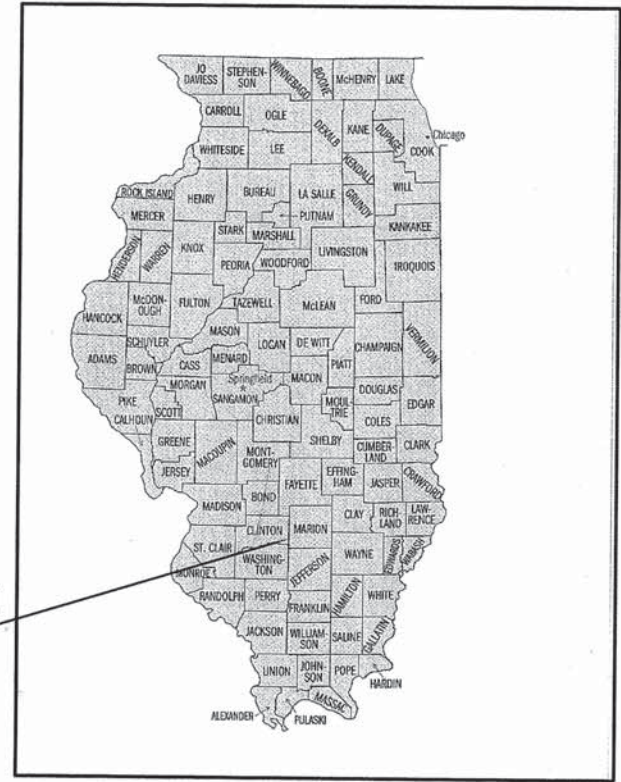
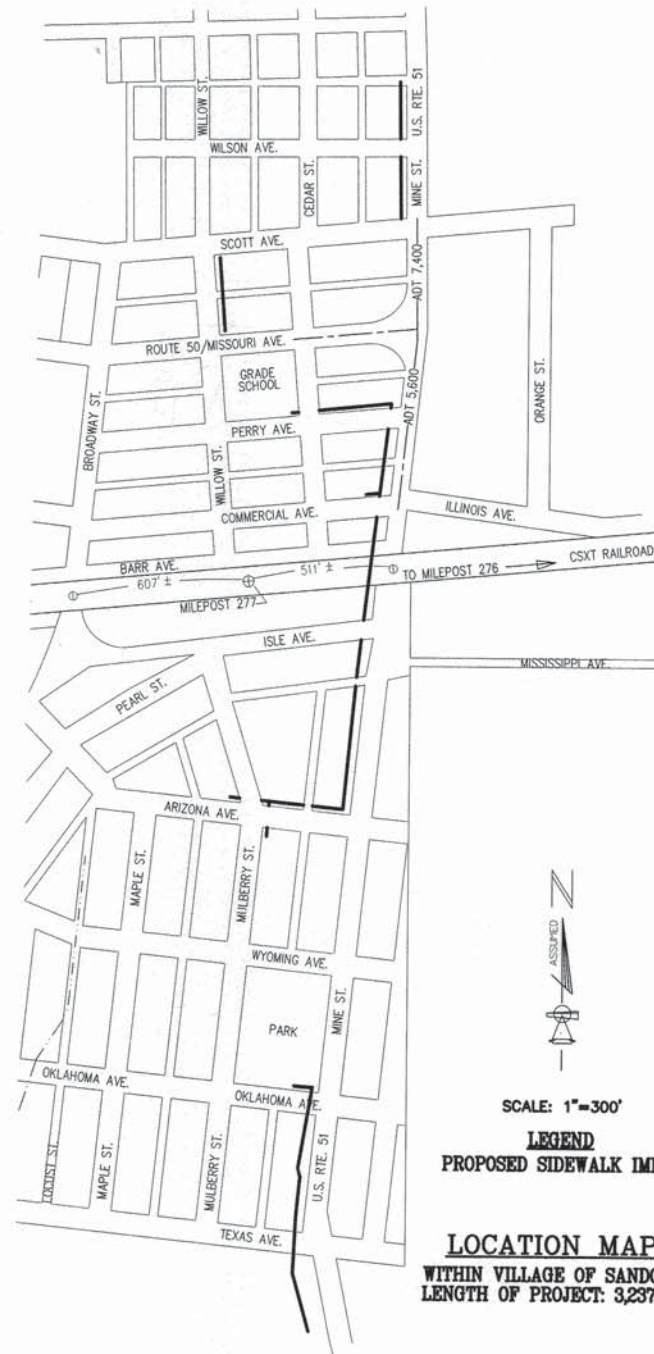
CHARTER COMMUNICATIONS  
12405 POWERSCOURT DRIVE, ST. LOUIS, MISSOURI 63131  
888-438-2427

**TELEPHONE**

FRONTIER  
101 E. COMMERCIAL AVENUE, SANDOVAL, ILLINOIS 62882  
800-921-8104

**WATER, SANITARY & STORM SEWERS**

VILLAGE OF SANDOVAL  
132 E. COMMERCIAL AVENUE, SANDOVAL, ILLINOIS 62882  
618-247-3845



PROJECT LOCATION  
SANDOVAL  
MARION COUNTY



*Dennis M. Dunnill*  
signature  
7/22/14  
date  
license expires 11/30/2015

**DUNNILL  
ENGINEERING**

1010 MADISON DRIVE  
CARLYLE, ILLINOIS 62231  
Phone: 618-444-6070

DRAWN: DLW/DMD DESIGN: DMD JOB: 10.10 DATE: 7-22-14

SCALE: 1"=300'

**LEGEND**  
PROPOSED SIDEWALK IMPROVEMENTS

**LOCATION MAP**  
WITHIN VILLAGE OF SANDOVAL  
LENGTH OF PROJECT: 3,237 FEET, 0.62 MILES

STATE OF ILLINOIS  
DEPARTMENT OF TRANSPORTATION

APPROVED 7-22 2014  
*Pam Stelmas*  
PRESIDENT, VILLAGE OF SANDOVAL

PASSED September 3 2014  
*[Signature]*  
DISTRICT EIGHT ENGINEER OF LOCAL ROADS & STREETS

RELEASING FOR BID  
BASED ON LIMITED  
REVIEW September 3 2014  
*[Signature]*  
DEPUTY DIRECTOR OF HIGHWAYS, REGION 5 ENGINEER

PRINTED BY AUTHORITY  
OF THE STATE OF ILLINOIS

HOLD IT! CALL BEFORE YOU DIG!  
PHONE J.U.L.I.E.  
TOLL FREE 800/892-0123

REVISED: 7-22-14  
REVISED: 09-28-14  
REVISED: 04-18-14  
REVISED: 12-10-13  
10.10 SHEET 1 - WSCAD 2008



ROUTE	SECTION	COUNTY	TOTAL SHEETS	SHEET NUMBER
NA	10-00005-00-SW	MARION	12	2
SANDOVAL, ILLINOIS			FEDERAL AID PROJECT	
CONTRACT 97501				

CODE NUMBER	ITEM DESCRIPTION	UNIT	QUANTITY
20200100	EARTH EXCAVATION	CU YD	250
28000250	TEMPORARY EROSION CONTROL SEEDING	POUND	1
40600982	HOT MIX ASPHALT REMOVAL - BUTT JOINT	SQ YD	13
42400100	PORTLAND CEMENT CONCRETE SIDEWALK 4 INCH	SQ FT	11798
42400300	PORTLAND CEMENT CONCRETE SIDEWALK 6 INCH	SQ FT	1479
42400800	DETECTABLE WARNINGS	SQ FT	160
44000200	DRIVEWAY PAVEMENT REMOVAL*	SQ YD	134
44000500	COMBINATION CURB AND GUTTER REMOVAL	FOOT	165
44000600	SIDEWALK REMOVAL	SQ FT	1187
60604700	COMBINATION CONCRETE CURB AND GUTTER, TYPE B-6.18 (MODIFIED)	FOOT	165
Δ 66900200	NON-SPECIAL WASTE DISPOSAL	CU YD	50
Δ 66900450	SPECIAL WASTE PLANS AND REPORTS	L SUM	1
Δ 66900530	SOIL DISPOSAL ANALYSIS	EACH	3
67100100	MOBILIZATION	L SUM	1
X7010216	TRAFFIC CONTROL AND PROTECTION (SPECIAL)	L SUM	1
Z0048665	RAILROAD PROTECTIVE LIABILITY INSURANCE	L SUM	1
XX008693	HMA SIDEWALK	SQ YD	25

\* DRIVEWAY PAVEMENT REMOVAL INCLUDES REMOVAL OF CONCRETE, OIL & CHIP OVER STONE BASE AND ASPHALT PAVEMENT IN DRIVEWAYS AND ALLEYS.

Δ SPECIALTY ITEMS

#### GENERAL NOTES

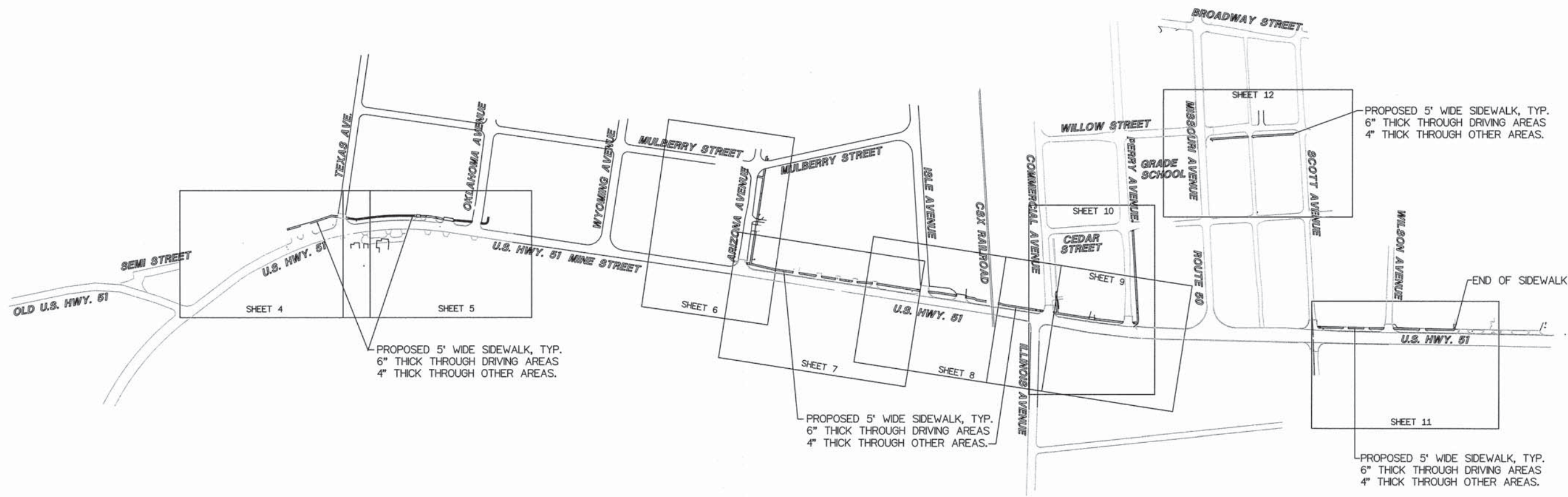
1. THE LOCATION OF EXISTING UNDERGROUND PIPING AND UTILITIES AS SHOWN ON THE PLANS HAS BEEN DETERMINED FROM AVAILABLE INFORMATION, AND HAS BEEN SHOWN ONLY FOR THE CONVENIENCE OF THE CONTRACTOR. THE CONTRACTOR SHALL DETERMINE THE EXACT LOCATION OF ALL EXISTING UTILITIES BEFORE COMMENCING WORK AND AGREES TO BE FULLY RESPONSIBLE FOR ANY AND ALL DAMAGES WHICH MIGHT BE OCCASIONED BY THE CONTRACTOR'S FAILURE TO EXACTLY LOCATE AND PRESERVE ANY AND ALL UNDERGROUND UTILITIES. THE CONTRACTOR SHALL BE RESPONSIBLE FOR PROTECTING UTILITY PROPERTY FROM CONSTRUCTION. THE J.U.L.I.E. NUMBER IS: 1-800-892-0123. A MINIMUM OF 48 HOURS ADVANCED NOTICE IS REQUIRED.
2. PROVIDE TEMPORARY EROSION CONTROL SEEDING IN GRASS AREAS DISTURBED BY CONSTRUCTION IN ACCORDANCE WITH IDOT STANDARD SPECIFICATIONS FOR ROAD AND BRIDGE CONSTRUCTION SECTION 280.
3. STRIP TOPSOIL AND STOCKPILE FOR USE IN BACKFILLING OF COMPLETED SIDEWALK AND FINAL GRADING. PROVIDE SOIL ANALYSIS PRIOR TO EXCAVATION TO DETERMINE IF NON-SPECIAL WASTE EXISTS. IF NON-SPECIAL WASTE IS PRESENT, DISPOSE OF IN ACCORDANCE WITH IDOT STANDARD SPECIFICATIONS FOR ROAD AND BRIDGE CONSTRUCTION SECTION 669.
4. EXCAVATE TO DEPTH REQUIRED TO ACCOMMODATE SIDEWALK & SUBGRADE. COMPACT SUBGRADE IN ACCORDANCE WITH STANDARD SPECIFICATIONS FOR ROAD AND BRIDGE CONSTRUCTION SECTION 424.
5. DRIVEWAY PAVEMENT REMOVAL SHALL INCLUDE REMOVAL OF CONCRETE, OIL & CHIP OVER STONE BASE AND ASPHALT PAVEMENT IN DRIVEWAY AND ALLEYS.
6. CONCRETE SIDEWALK SHALL BE PROVIDED IN ACCORDANCE WITH STANDARD SPECIFICATIONS FOR ROAD AND BRIDGE CONSTRUCTION SECTION 424.
7. ADA REQUIREMENTS:
  - A. ADA RAMPS CONFORMING TO IDOT DBE MANUAL CHAPTER 58-109(c) 5' WIDE WALKWAY WITH 6" WIDE SIDE CURB WHERE SHOWN ON DRAWINGS.
  - B. DETECTABLE WARNING SURFACES CONFORMING TO IDOT DBE MANUAL CHAPTER 58-109(c).
8. ELEVATIONS SHOWN ARE TOP OF FINISH SURFACE UNLESS NOTED OTHERWISE.

#### COMMITMENTS

1. MEMORANDUM DATED JANUARY 22, 2014.
  - A. BASED ON THE PRELIMINARY ENVIRONMENTAL SITE ASSESSMENT (PESA), THE CONTRACTOR SHALL HIRE AN ENVIRONMENTAL FIRM TO REMEDIATE ANY SOIL CONTAMINATION AND MONITOR FOR WORK PROTECTION.



ROUTE	SECTION	COUNTY	TOTAL SHEETS	SHEET NUMBER
NA	10-00005-00-SW	MARION	12	3
SANDOVAL, ILLINOIS		FEDERAL AID PROJECT CONTRACT 97501		



**LEGEND**

- |                         |                             |
|-------------------------|-----------------------------|
| ○ IRON PIN OR PIPE FND. | ⊓ GAS VALVE                 |
| ○ IRON PIN SET          | ⊠ GAS METER                 |
| □ CONC. MON. FND.       | ○ TREE DECIDUOUS            |
| □ CONC. MON. SET        | ★ TREE EVERGREEN            |
| △ STONE FOUND           | ⊙ BUSH                      |
| ☆ IRON PIN W/ CAP SET   |                             |
| ☆ IRON PIN W/ CAP FND   |                             |
| ←○ POWER POLE W/ ANCHOR | —E— ELECTRIC LINE           |
| * LIGHT POLE            | —W— WATER LINE              |
| □ TELEPHONE PEDESTAL    | —T— TELEPHONE LINE          |
| ⊕ FIRE HYDRANT          | —G— GAS LINE                |
| ⊕ WATER VALVE           | —SAN S— SANITARY SEWER LINE |
| ⊕ WATER METER           | —SS— STORM SEWER LINE       |
| ⊙ MANHOLE               | — BOUNDARY LINE             |
| ⊙ CLEAN OUT             | —000— EXISTING CONTOUR LINE |
| ⊕ SIGN                  | —X— FENCE LINE              |
- TBC - TOP BACK OF CURB  
ELEVATION SHOWN IS OF  
THE TOP BACK OF CURB  
AT THE LOCATION INDICATED

**SHEET INDEX MAP**

THE ABOVE DRAWING SHOWS THE SHEETS ON WHICH PLAN & PROFILE, TYPICAL SECTIONS & DETAILS ARE LOCATED

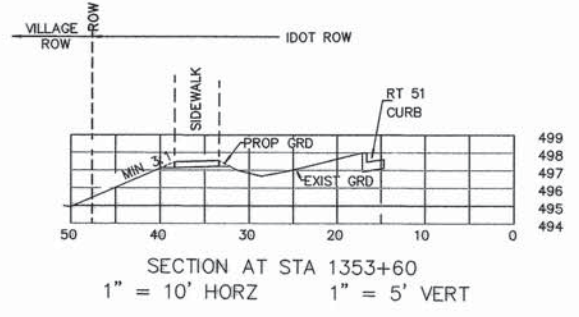
SHEET 4 ALONG ROUTE 51, FROM TEXAS AVENUE TO SOUTH  
SHEET 5 ALONG ROUTE 51, TEXAS AVENUE TO OKLAHOMA AVENUE  
SHEET 6 ALONG ARIZONA AVENUE, FROM MULBERRY STREET TO ROUTE 51  
SHEET 7 ALONG ROUTE 51, ARIZONA AVENUE TO ALLEY SOUTH OF ISLE AVENUE  
SHEET 8 ALONG ROUTE 51, ALLEY SOUTH OF ISLE AVENUE TO CSX RAILROAD  
SHEET 9 ALONG ROUTE 51, NORTH OF CSX RAILROAD TO PERRY AVENUE  
SHEET 10 ALONG PERRY AVENUE, FROM CEDAR STREET TO ROUTE 51  
SHEET 11 ALONG ROUTE 51, FROM SCOTT AVENUE THROUGH ALLEY NORTH OF WILSON AVENUE  
SHEET 12 ALONG WILLOW STREET, FROM ROUTE 50 TO SCOTT AVENUE



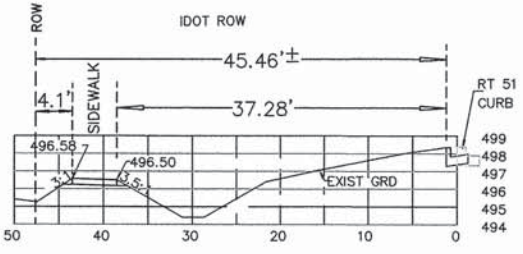
SCALE: 1"= 180' +/-



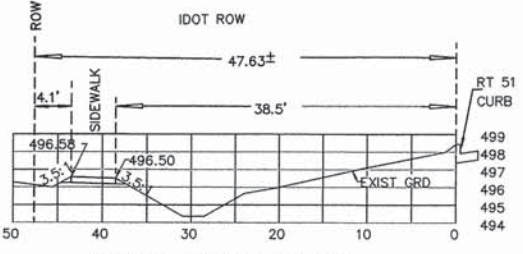
ROUTE	SECTION	COUNTY	TOTAL SHEETS	SHEET NUMBER
NA	10-0005-00-SW	MARION	12	4
SANDOVAL, ILLINOIS		FEDERAL AID PROJECT		
		CONTRACT 97501		



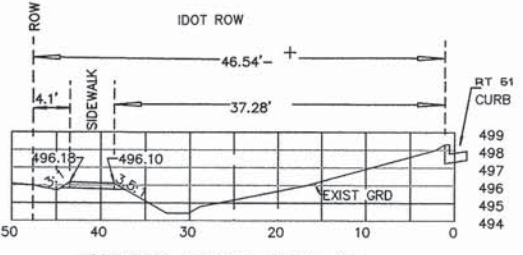
SECTION AT STA 1353+60  
1" = 10' HORZ 1" = 5' VERT



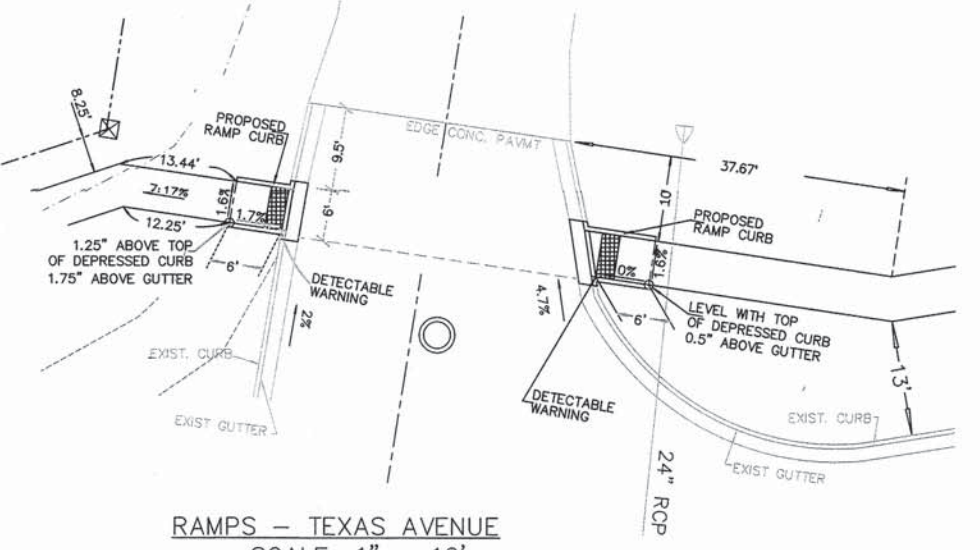
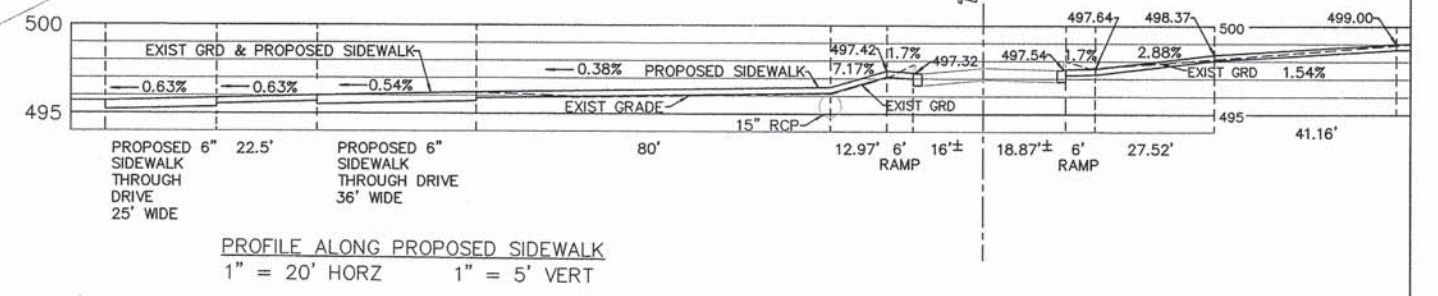
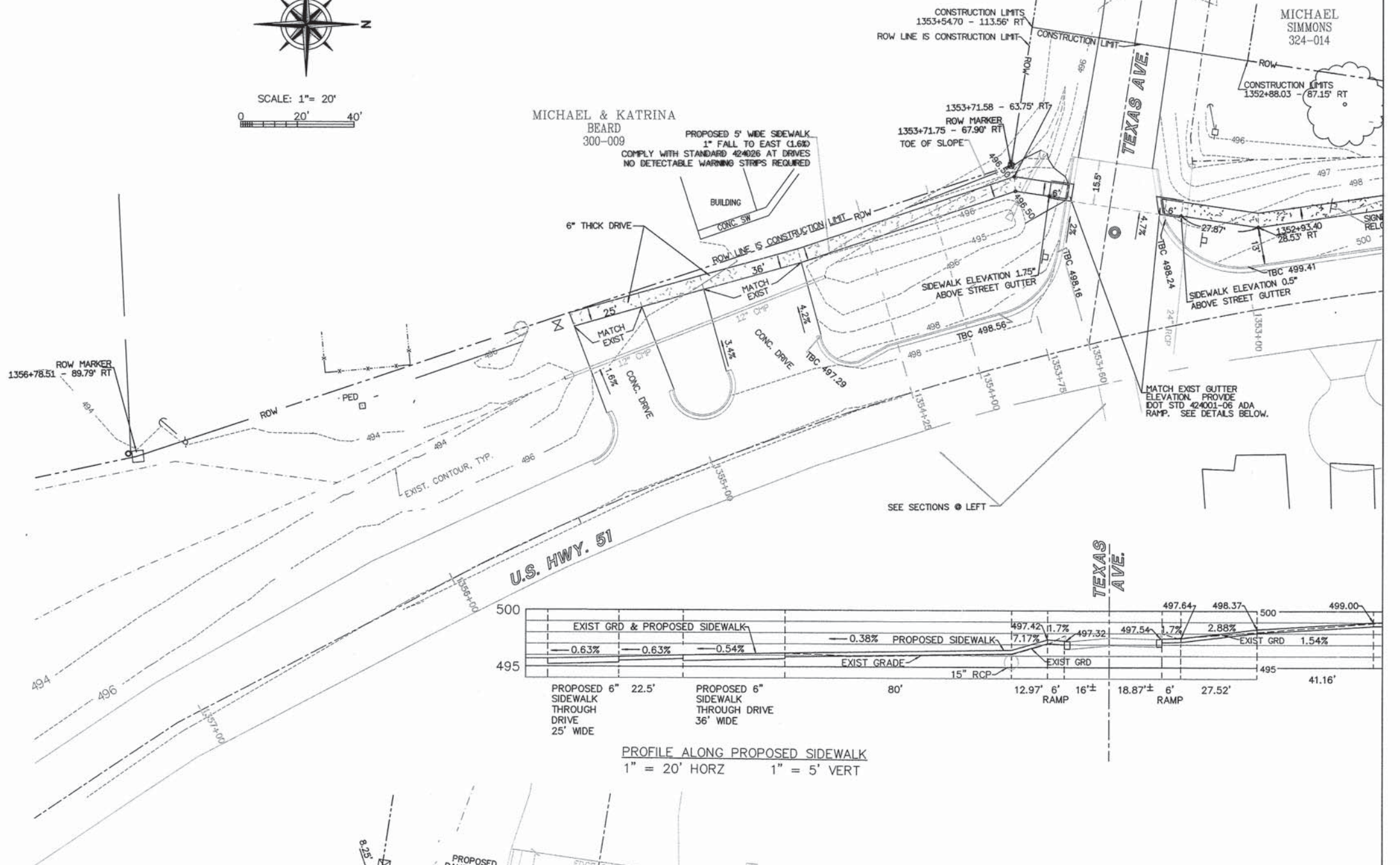
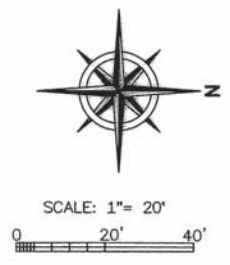
SECTION AT STA 1353+75  
1" = 10' HORZ 1" = 5' VERT



SECTION AT STA 1354+00  
1" = 10' HORZ 1" = 5' VERT



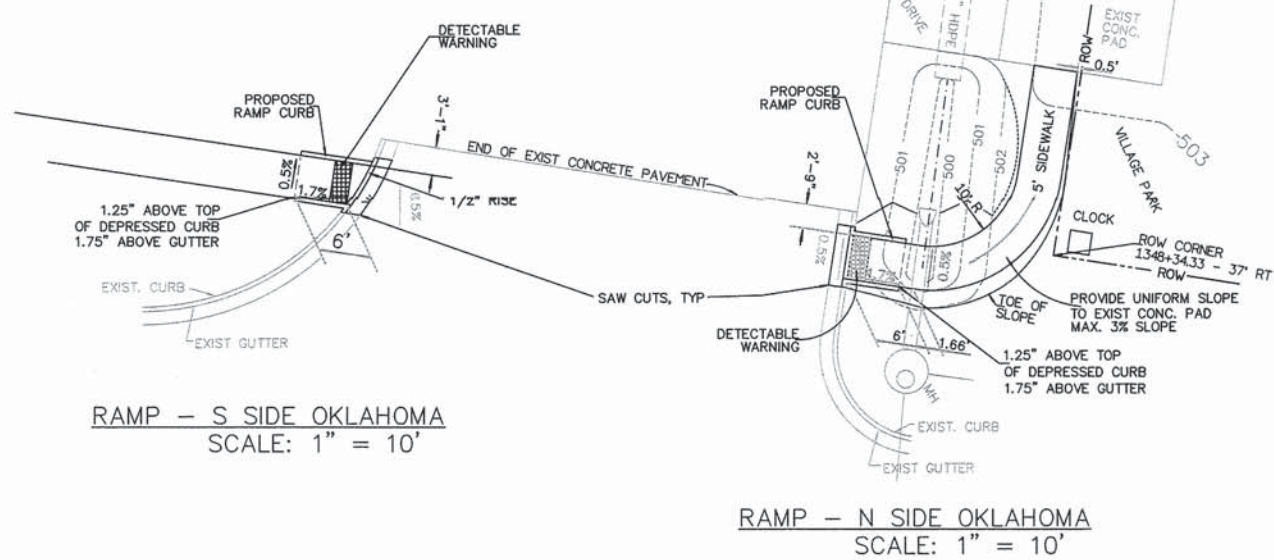
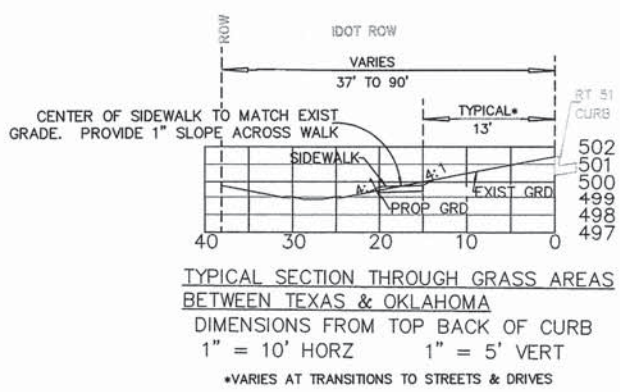
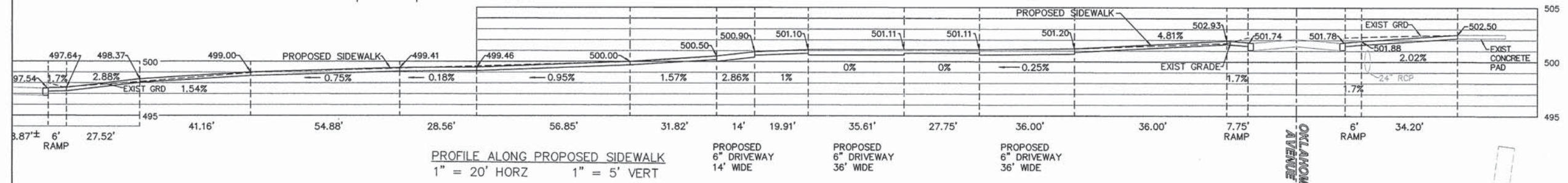
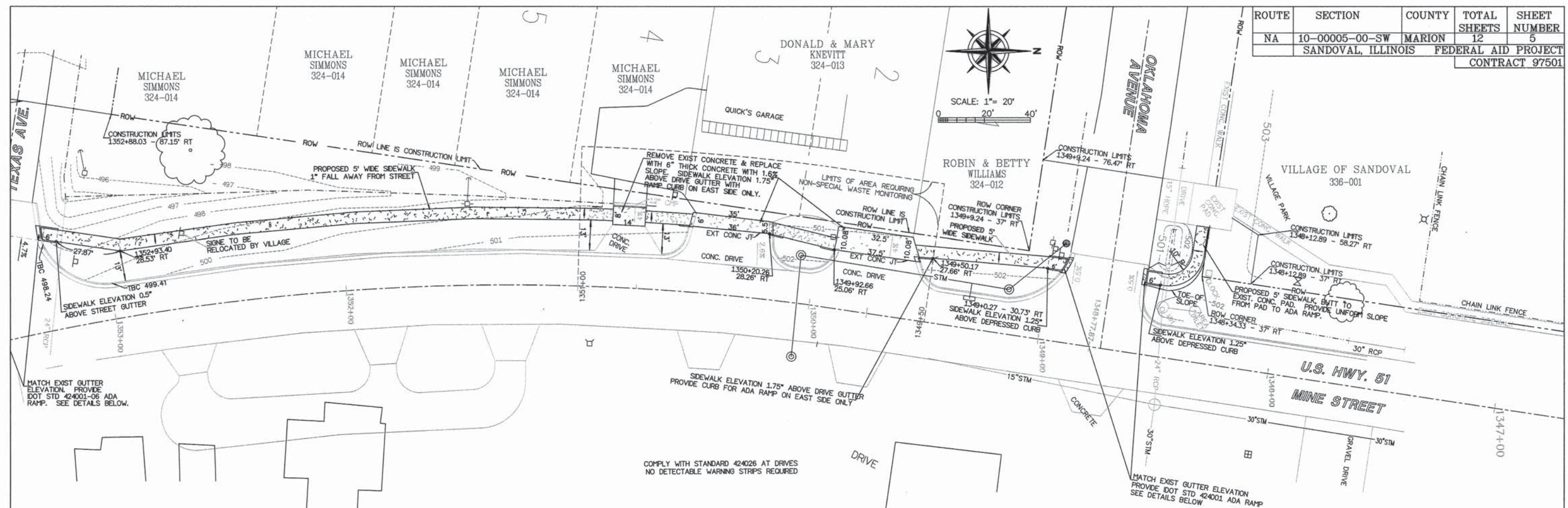
SECTION AT STA 1354+25  
1" = 10' HORZ 1" = 5' VERT



RAMPS - TEXAS AVENUE  
SCALE: 1" = 10'

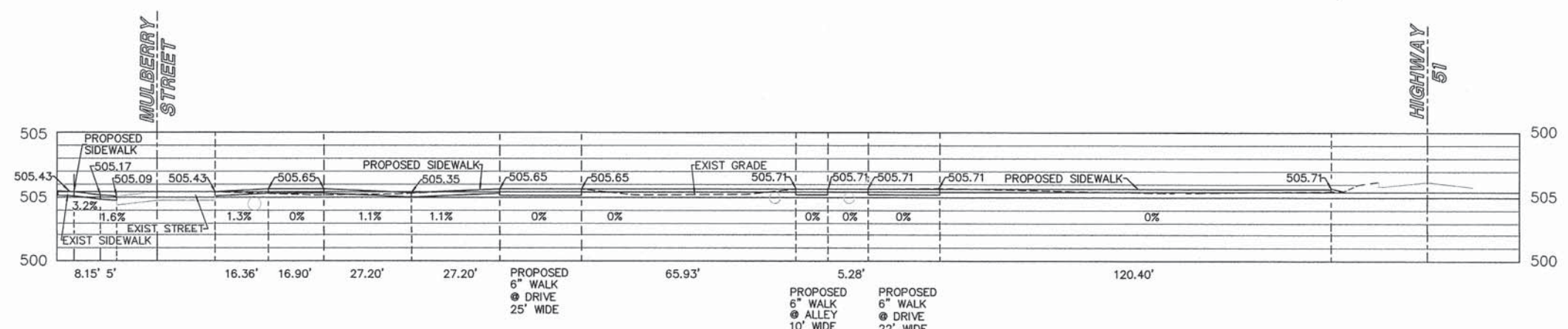
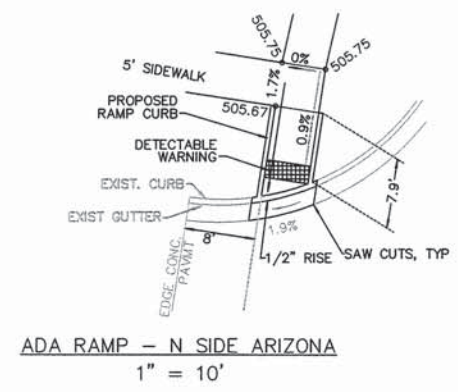
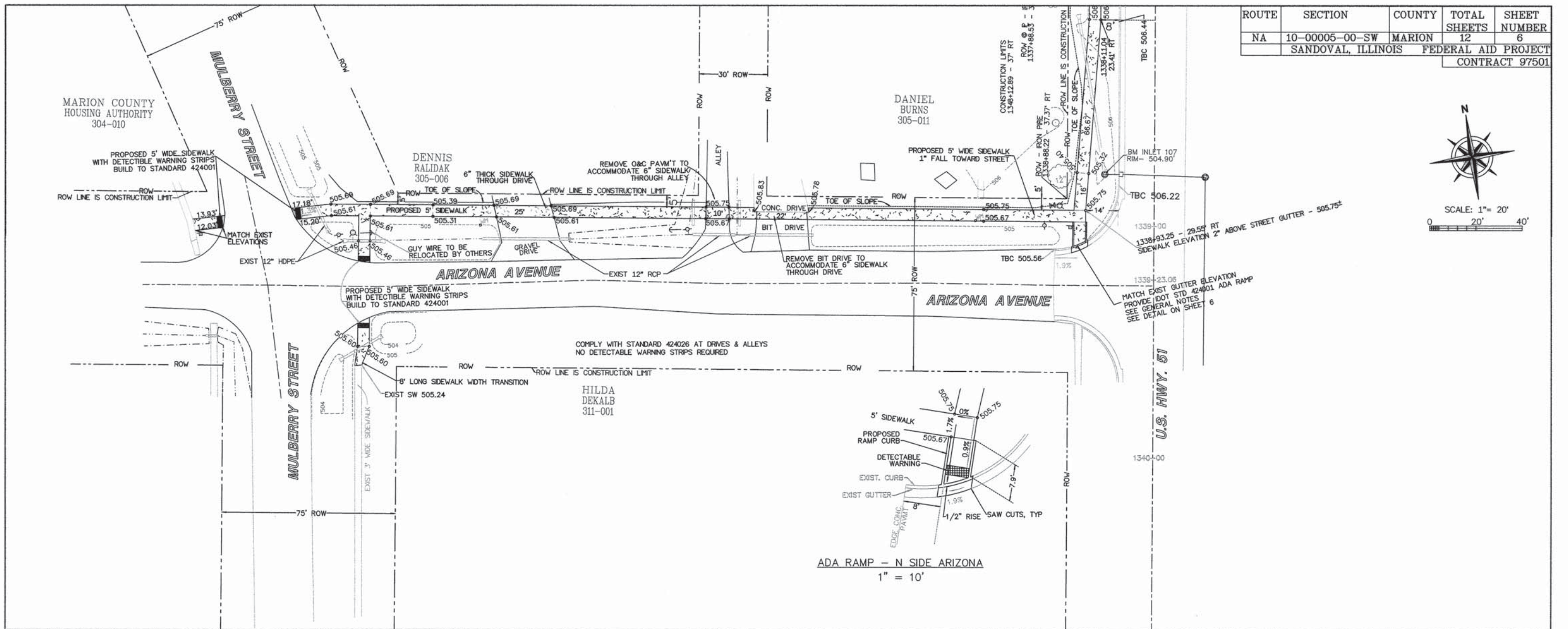
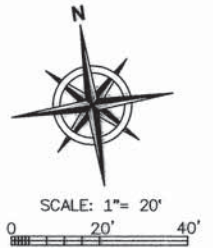


ROUTE	SECTION	COUNTY	TOTAL SHEETS	SHEET NUMBER
NA	10-00005-00-SW	MARION	12	5
SANDOVAL, ILLINOIS			FEDERAL AID PROJECT	
CONTRACT 97501				





ROUTE	SECTION	COUNTY	TOTAL SHEETS	SHEET NUMBER
NA	10-00005-00-SW	MARION	12	6
SANDOVAL, ILLINOIS		FEDERAL AID PROJECT CONTRACT 97501		

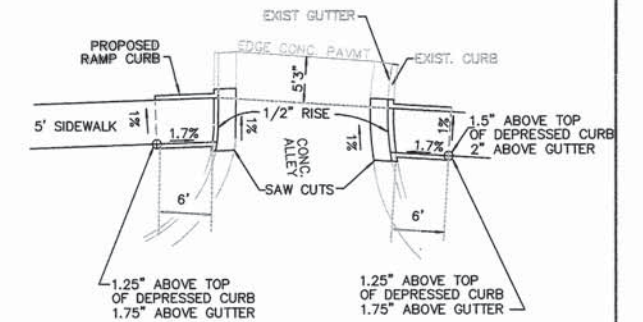
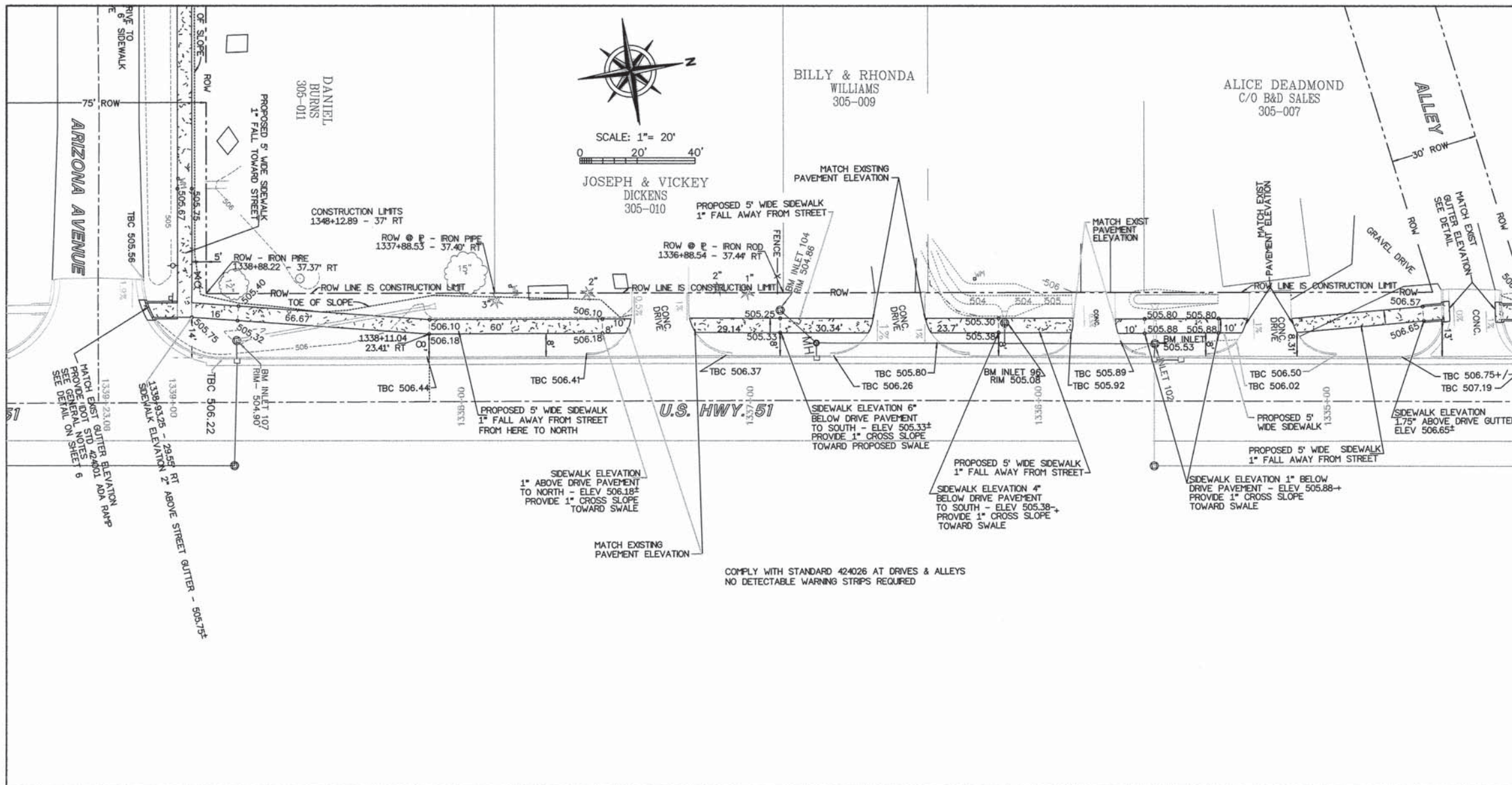


PROFILE ALONG PROPOSED SIDEWALK  
 1" = 20' HORZ      1" = 5' VERT  
 PROFILE & ELEVATIONS @ CENTER OF SIDEWALK

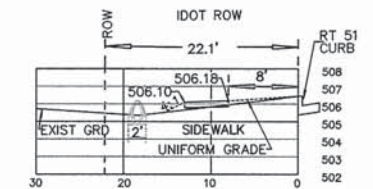
REVISED: 05-28-14  
 REVISED: 04-16-14  
 REVISED: 12-10-13  
 10.10 SHEET 4 - MSCAD 2002



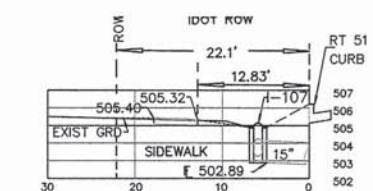
ROUTE	SECTION	COUNTY	TOTAL SHEETS	SHEET NUMBER
NA	10-00005-00-SW	MARION	12	7
SANDOVAL, ILLINOIS			FEDERAL AID PROJECT	
CONTRACT 97501				



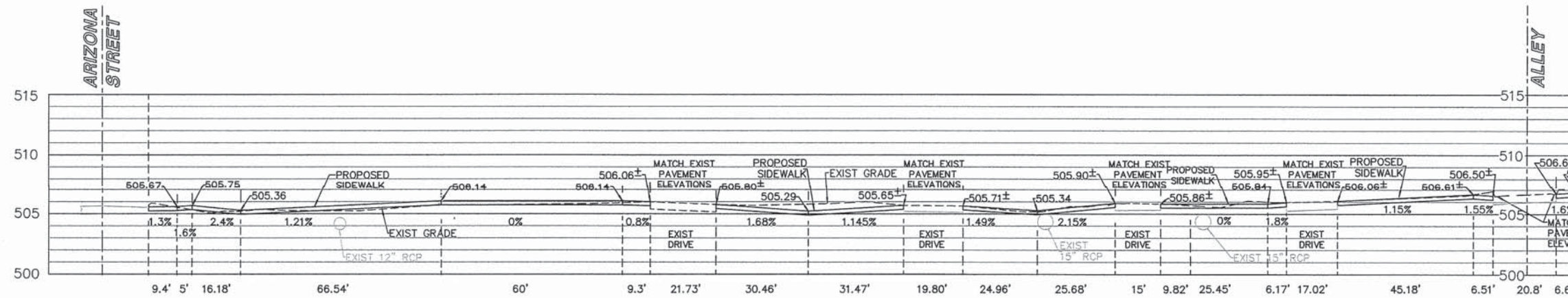
RAMPS @ ALLEY  
SCALE: 1" = 10'



SECTION AT END OF 15" RCP  
DIMENSIONS FROM TOP BACK OF CURB  
STATION 1338+8.87



SECTION THROUGH INLET 107  
DIMENSIONS FROM TOP BACK OF CURB  
STATION 1338+77.80



PROFILE ALONG PROPOSED SIDEWALK  
1" = 20' HORZ 1" = 5' VERT  
PROFILE & ELEVATIONS @ CENTER OF SIDEWALK



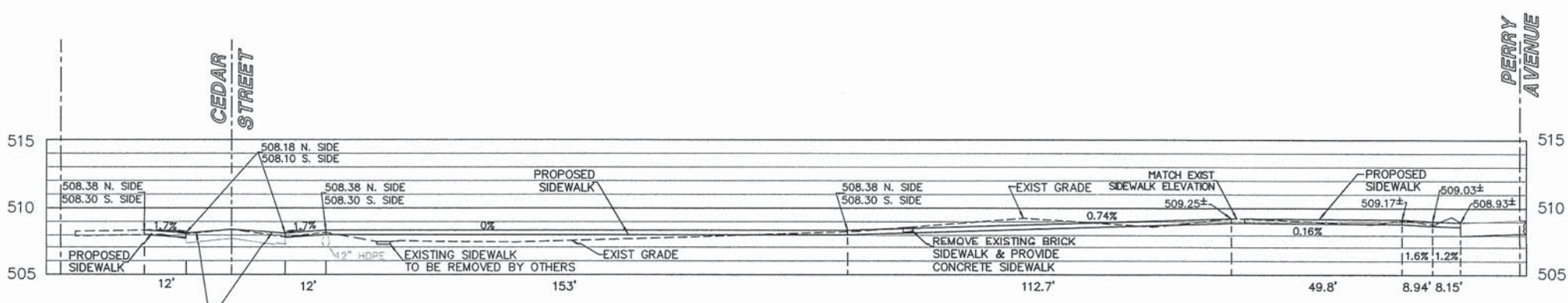
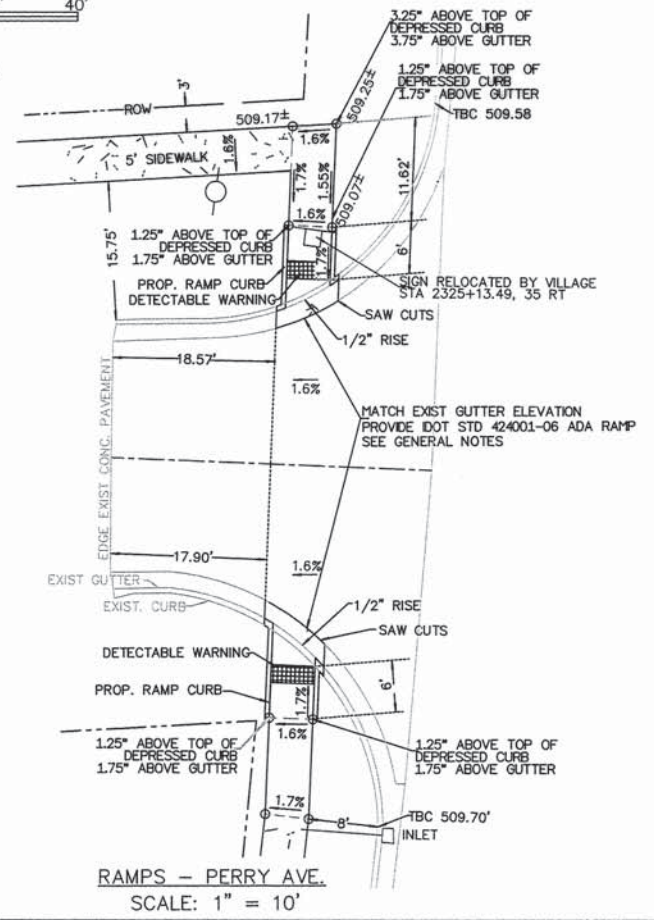
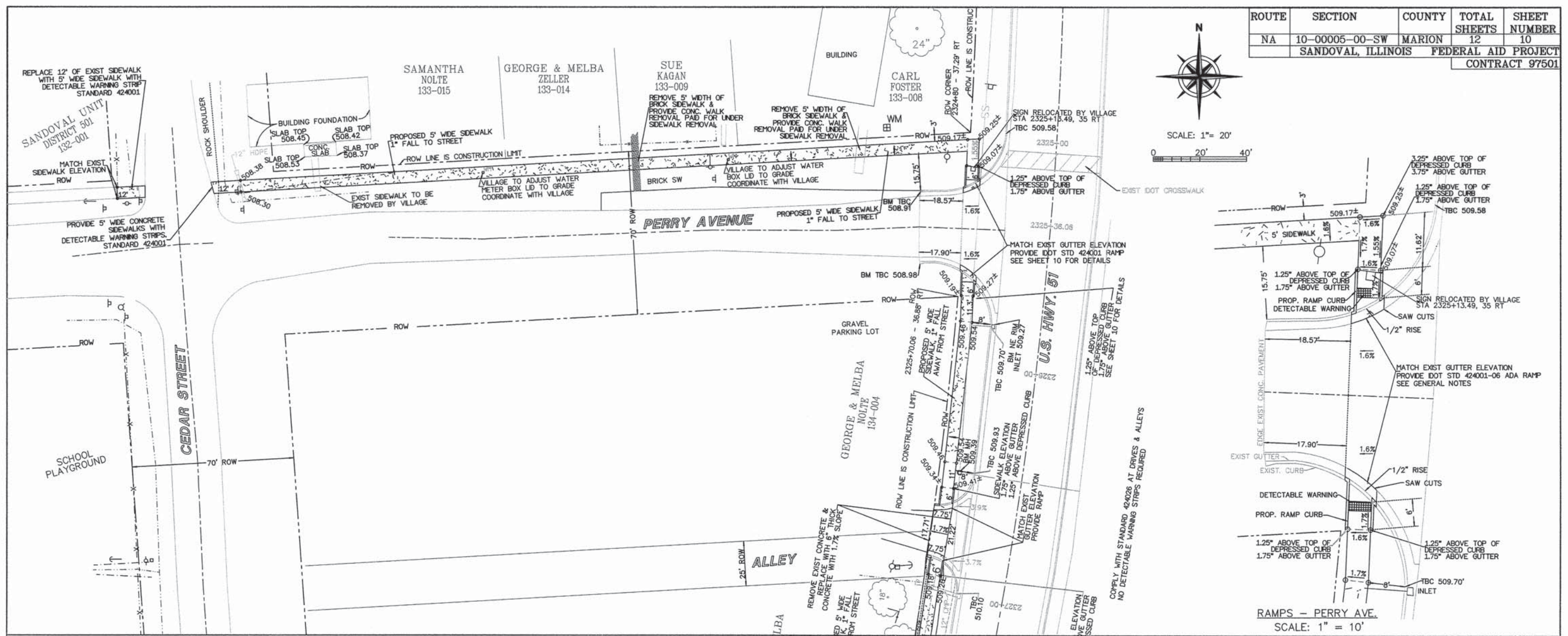
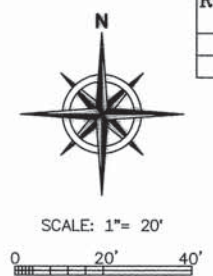








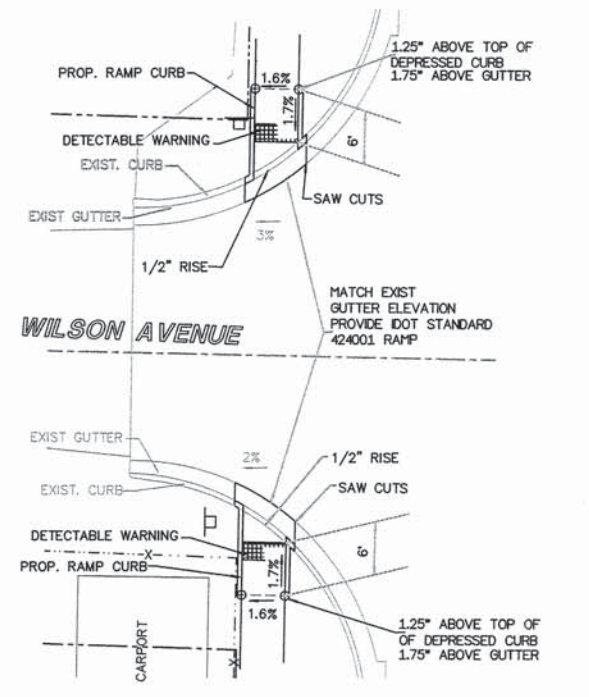
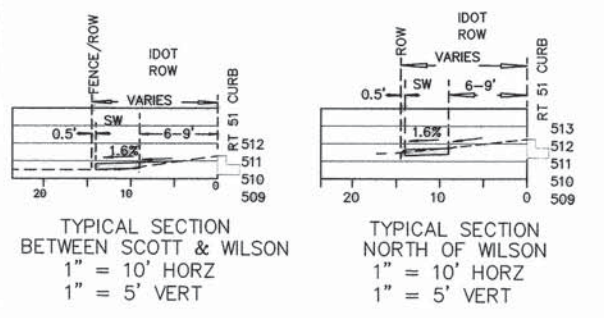
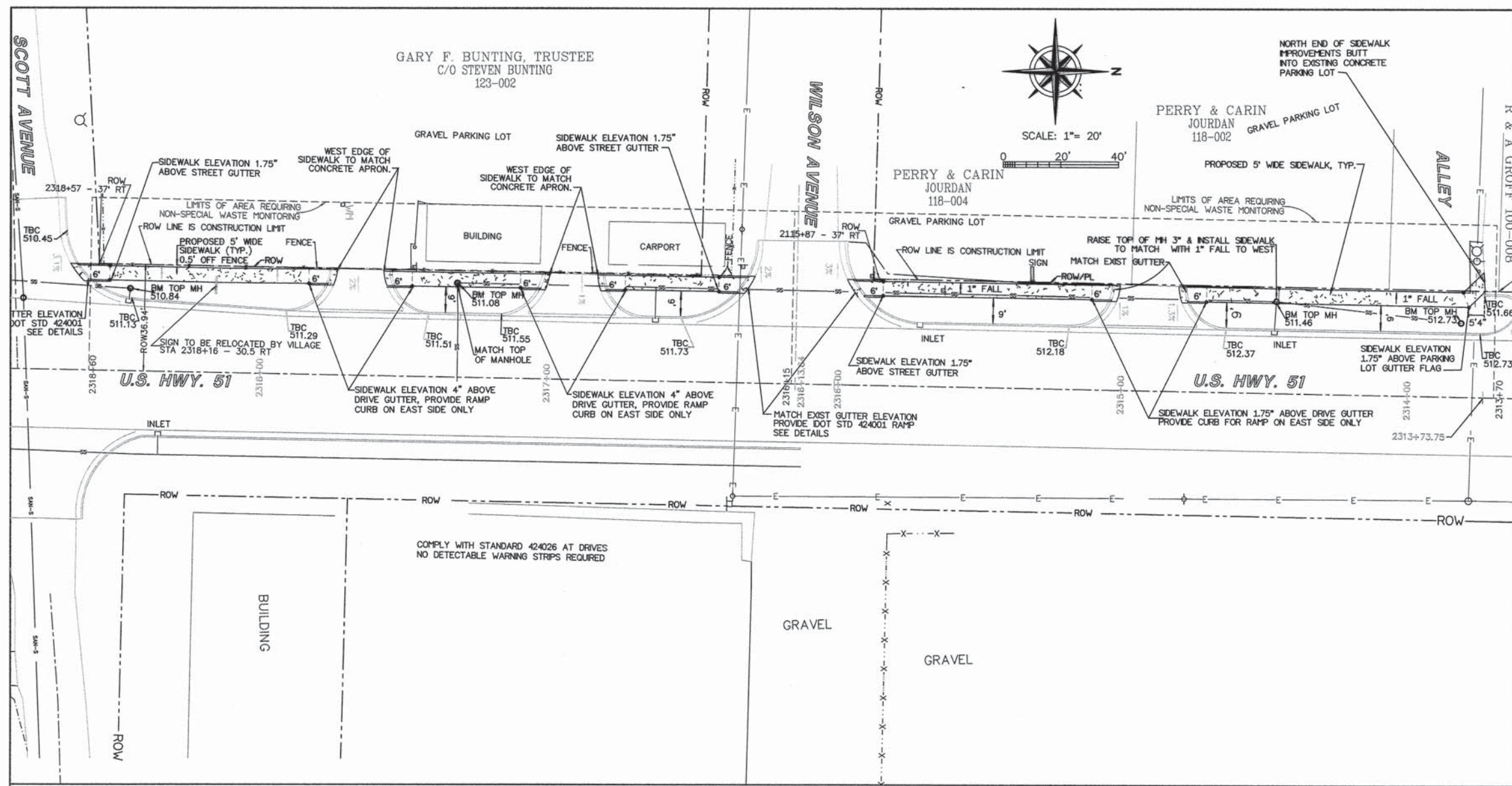
ROUTE	SECTION	COUNTY	TOTAL SHEETS	SHEET NUMBER
NA	10-00005-00-SW	MARION	12	10
SANDOVAL, ILLINOIS		FEDERAL AID PROJECT		
CONTRACT 97501				



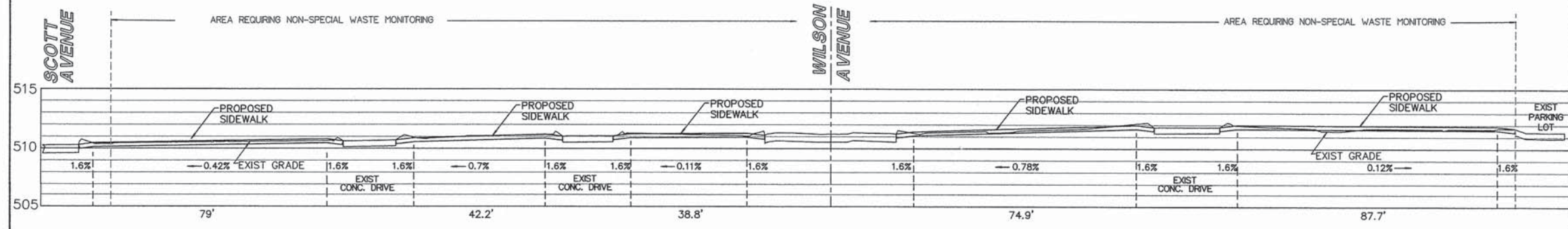
PROFILE ALONG PROPOSED SIDEWALK  
 1" = 20' HORZ 1" = 5' VERT  
 PROFILE & ELEVATIONS @ CENTER OF SIDEWALK



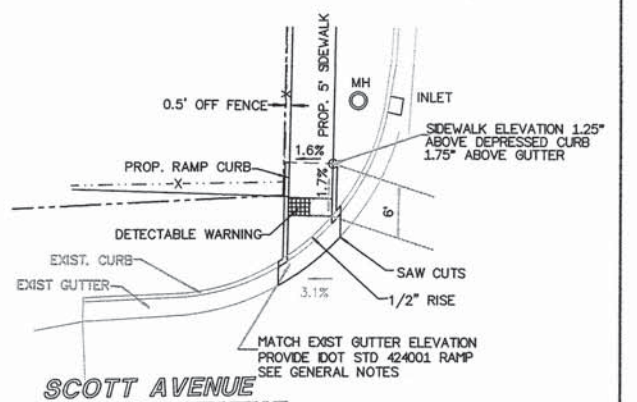
ROUTE	SECTION	COUNTY	TOTAL SHEETS	SHEET NUMBER
NA	10-00005-00-SW	MARION	12	11
		SANDOVAL, ILLINOIS		FEDERAL AID PROJECT
				CONTRACT 97501



RAMPS - WILSON AVE.  
SCALE: 1" = 10'



PROFILE ALONG PROPOSED SIDEWALK  
1" = 20' HORZ 1" = 5' VERT  
PROFILE & ELEVATIONS @ CENTER OF SIDEWALK

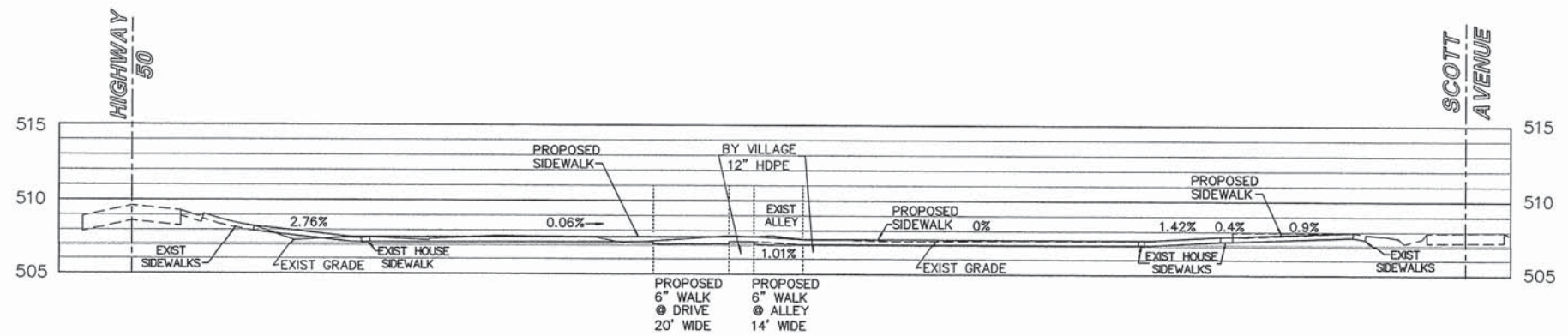
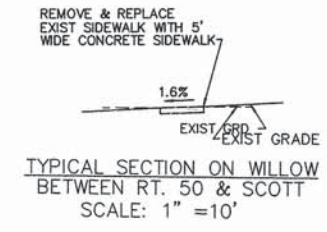
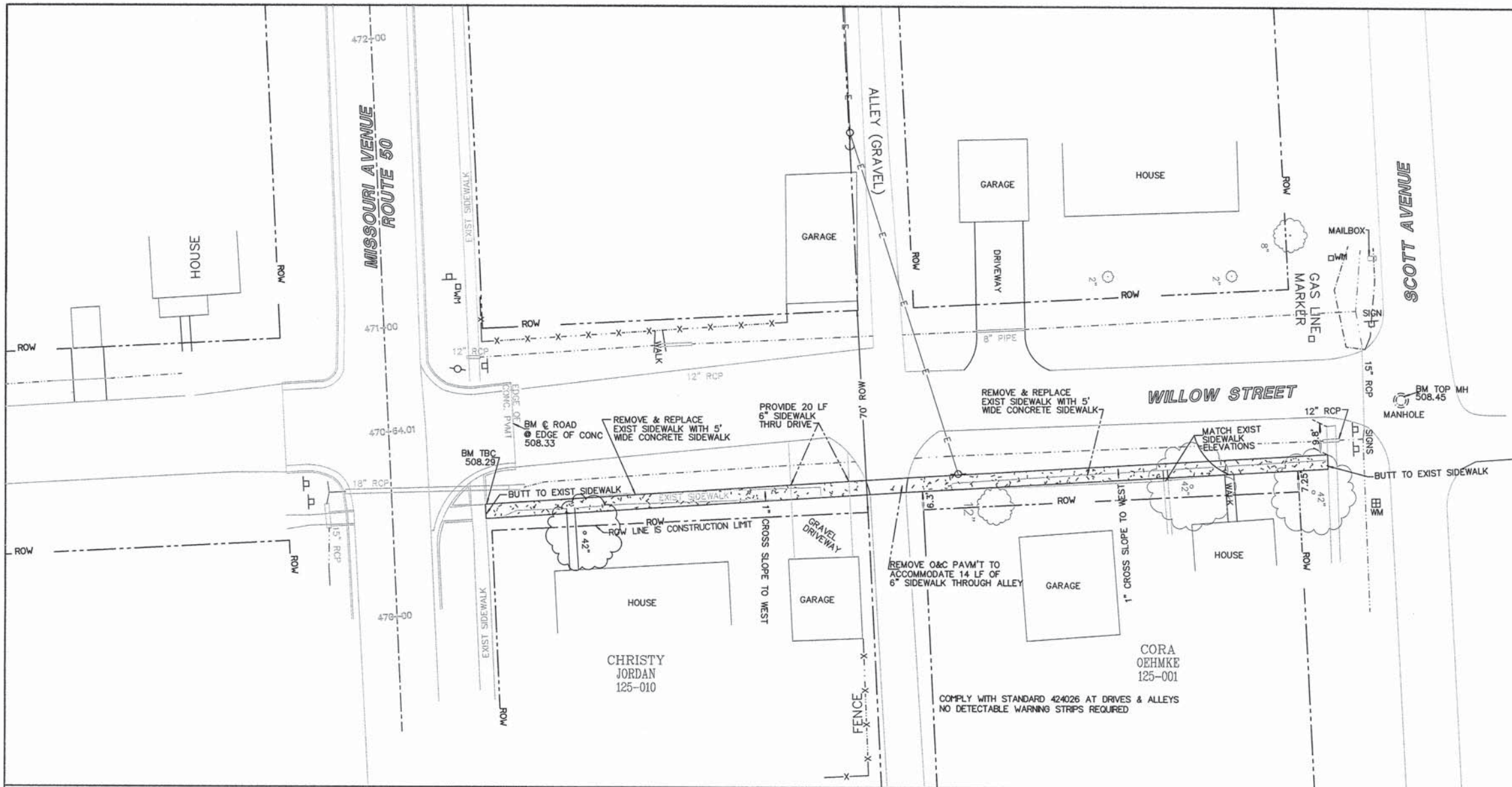


RAMP - N. SIDE SCOTT AVE.  
SCALE: 1" = 10'

REVISED: 05-28-14  
REVISED: 04-16-14  
REVISED: 12-10-13  
10.10 SHEET 4 - MSCAD 2002



ROUTE	SECTION	COUNTY	TOTAL SHEETS	SHEET NUMBER
NA	10-00005-00-SW	MARION	12	12
SANDOVAL, ILLINOIS			FEDERAL AID PROJECT	CONTRACT 97501



PROFILE ALONG PROPOSED SIDEWALK  
1" = 20' HORZ 1" = 5' VERT  
PROFILE & ELEVATIONS @ CENTER OF SIDEWALK