

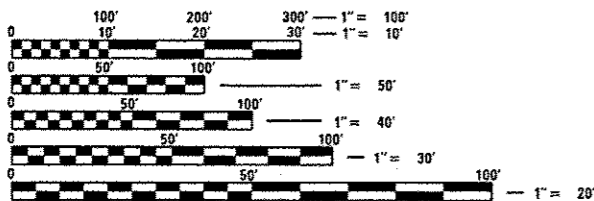
INDEX OF SHEETS

- 1 COVER SHEET
- 2 GENERAL NOTES / SCHEDULE OF QUANTITIES
- 3 SUMMARY OF QUANTITIES

STANDARDS

- 665001-02
- 701101-04
- 701106-02
- 701901-03

THIS PROJECT CONSISTS OF FENCE REMOVAL AND REPLACEMENT ALONG I-74 FROM CH 9 (KNOXVILLE INTERCHANGE) TO IL 97 INTERCHANGE IN KNOX COUNTY.



FULL SIZE PLANS HAVE BEEN PREPARED USING STANDARD ENGINEERING SCALES. REDUCED SIZED PLANS WILL NOT CONFORM TO STANDARD SCALES. IN MAKING MEASUREMENTS ON REDUCED PLANS, THE ABOVE SCALES MAY BE USED.

J.U.L.I.E.
JOINT UTILITY LOCATION INFORMATION FOR EXCAVATION
1-800-892-0123
OR 811

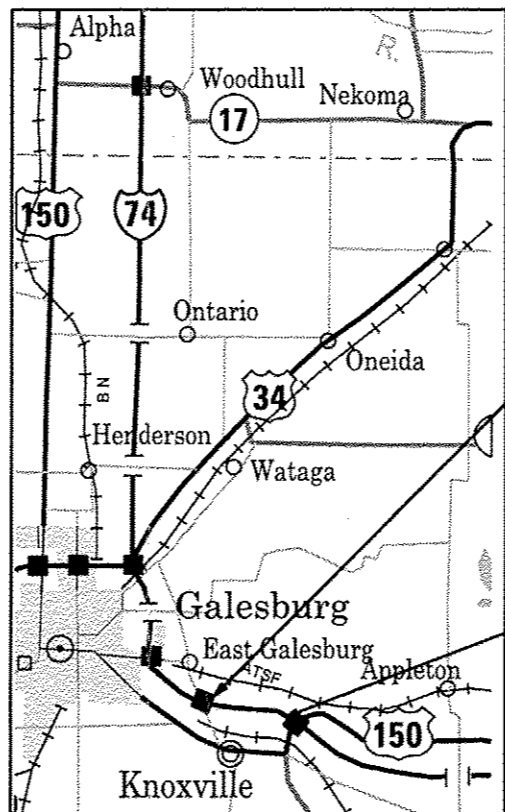
DESIGN ENGINEER: RAY SAMARA (309) 671-3459
PROJECT MANAGER: MIKE LEWIS (309) 671-3454
CATALOG NO. 035134-00D
CONTRACT NO. 68C37



ADT	=	13100	(2013)
MU	=	30%	(2013)
SU	=	5%	(2013)

STATE OF ILLINOIS
DEPARTMENT OF TRANSPORTATION
DIVISION OF HIGHWAYS
**PROPOSED
HIGHWAY PLANS**

FAI ROUTE 74 (I-74)
SECTION (48-27)I-2
CONTRACT MAINTENANCE
KNOX COUNTY
C-94-026-15



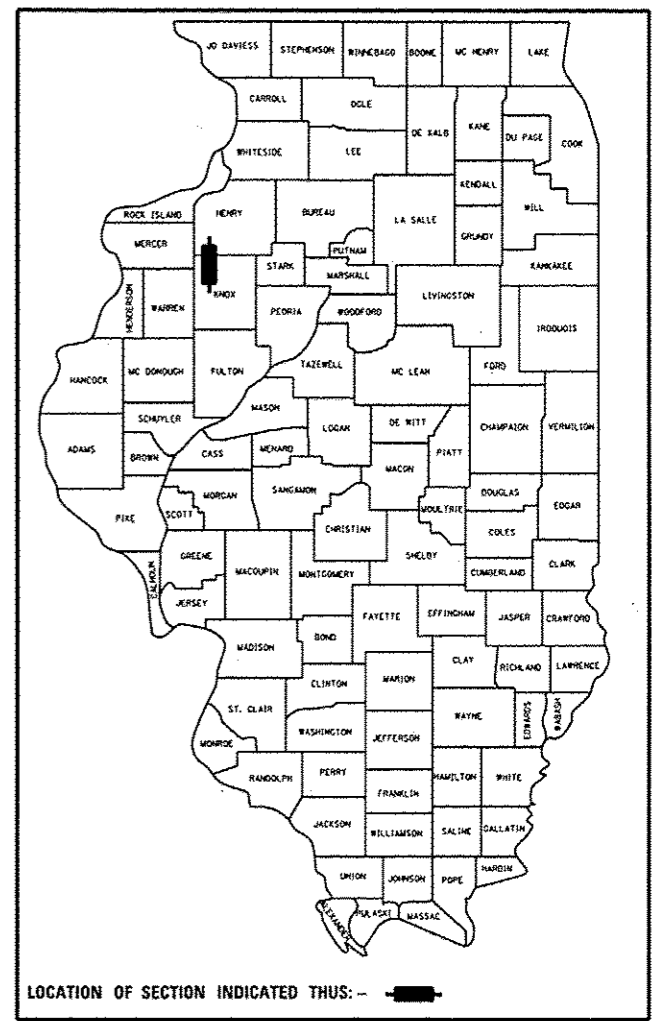
Project Begins
Sta. 515+25

Project Ends
Sta. 607+40

GROSS LENGTH = 2.7 MILES
NET LENGTH = 2.7 MILES

F.A.I. RTE.	SECTION	COUNTY	TOTAL SHEETS	SHEET NO.
74	(48-27)I-2	KNOX	3	1
		ILLINOIS	CONTRACT NO. 68C37	

D-94-039-14



STATE OF ILLINOIS
DEPARTMENT OF TRANSPORTATION
DIVISION OF HIGHWAYS

SUBMITTED August 19, 2014
John D. Baranzelli
DEPUTY DIRECTOR OF HIGHWAYS, REGION ENGINEER

Oct 17, 2014
John D. Baranzelli P.E.
ENGINEER OF DESIGN AND ENVIRONMENT

Oct 17, 2014
Ones Osman P.E.
DIRECTOR OF HIGHWAYS, CHIEF ENGINEER

**PRINTED BY THE AUTHORITY
OF THE STATE OF ILLINOIS**

COMMITMENTS

There are no commitments for this job.

JOB SPECIFIC NOTE

Minor brush and tree removal at the proposed fence locations shall be incidental to the pay item "Woven Wire Fence 4"

I - 74 FENCE MM 54 THRU 52			
WEST BOUND			
STA to STA	FENCE REMOVAL (FEET)	WOVEN WIRE FENCE (FEET)	REMARKS
607+40 to 607+10	30	30	4' woven fence w/stl T psts (down)
596+25 to 573+60	2265	2265	
MM 52 = sta 554+38			
515+90 to 515+25	65	65	4, woven fence w/wdn psts (down)
TOTAL	2360	2360	
EAST BOUND			
STA to STA	FENCE REMOVAL (FEET)	WOVEN WIRE FENCE (FEET)	REMARKS
586+92 to 587+22	30	30	4' woven fence w/stl T psts (down)
MM 52 = Sta 544+38			
533+92 to 534+35	43	43	4' woven fence w/wdn psts (down)
514+52 to 515+45	93	93	4' w/wdn psts (down)
STATION EQUATION 515+34.14 BK = 514+51.76 AH			
507+40 to 515+34		794	4' woven fence w/wdn psts, tree line, (missing)
Ramp Sta 8+55 = Mainline Sta 506+30		MM 51 = Sta 502+77	
7+18 to 8+55	137	137	4' woven fence w/wdn psts (down), EB Knoxville on ramp
3+85 to 6+25	240	240	4' woven fence w/wdn psts (down)
3+35 to 3+85	50	50	4' woven fence w/stl T psts (down)
TOTAL	593	1387	
WB TOTAL	2360	2360	
EB TOTAL	593	1387	
GRAND TOTAL	2953	3747	

