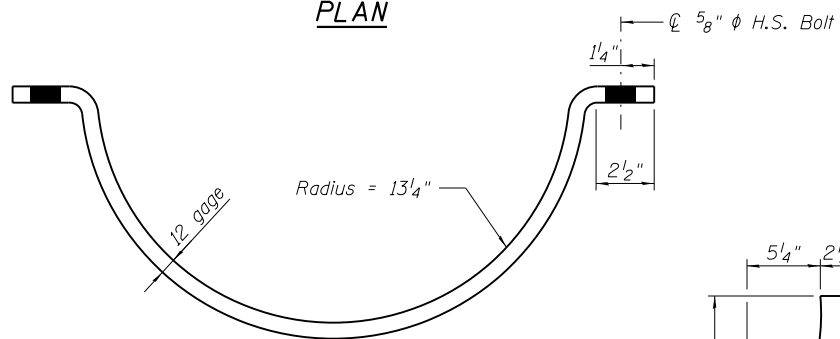


PLAN



NEW PIPE SADDLE
(50 required)

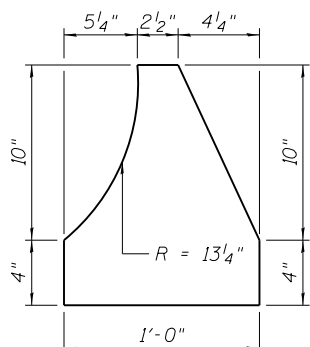


PLATE D

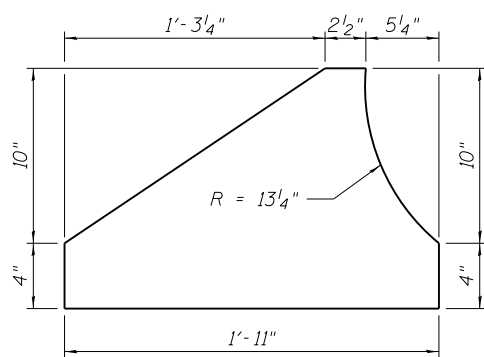


PLATE A

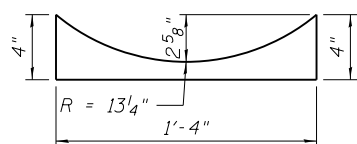


PLATE B

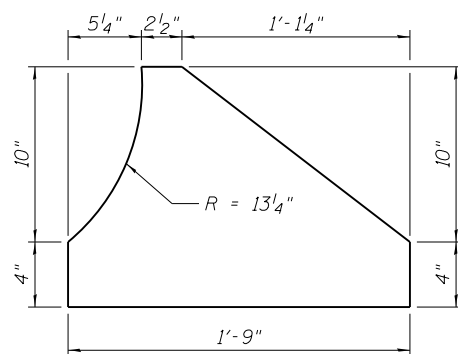
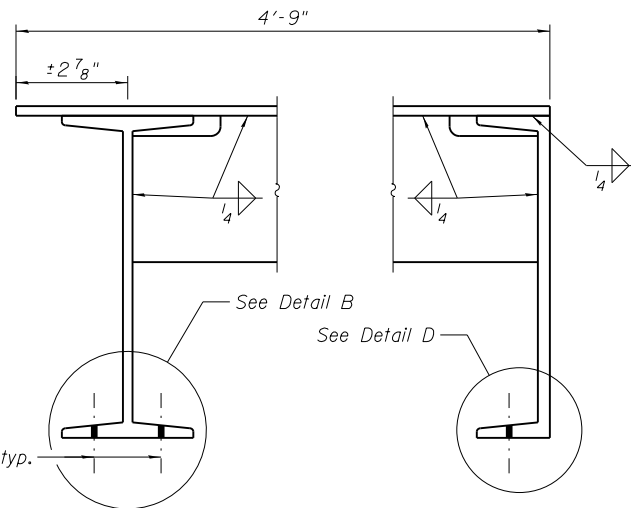
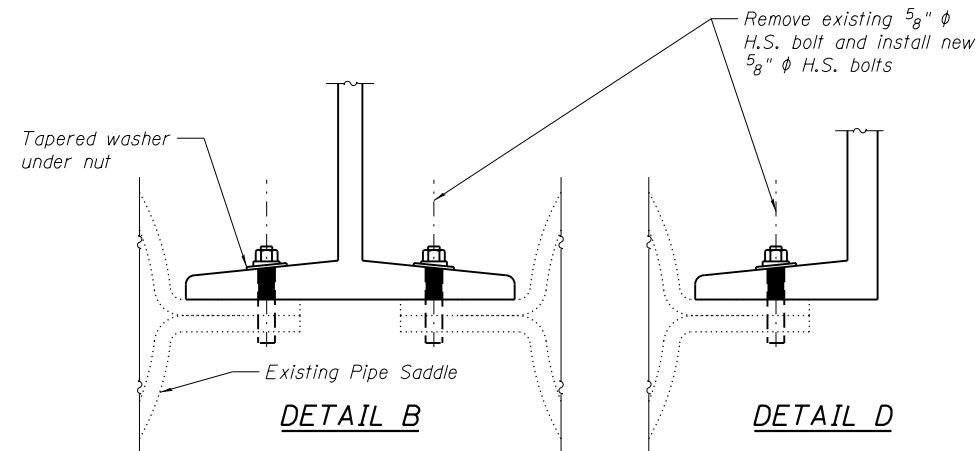


PLATE C



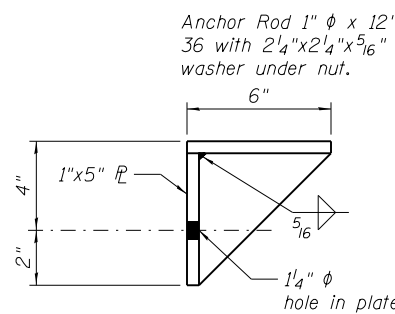
DETAIL A

DETAIL C

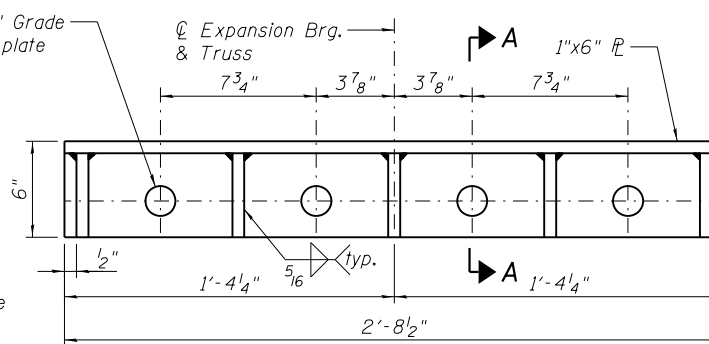


DETAIL B

DETAIL D



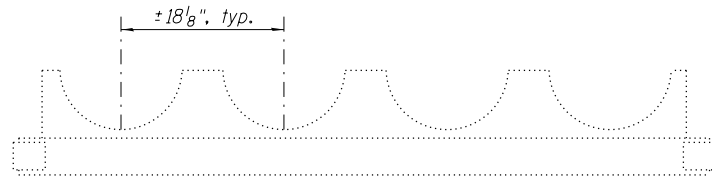
SECTION A-A



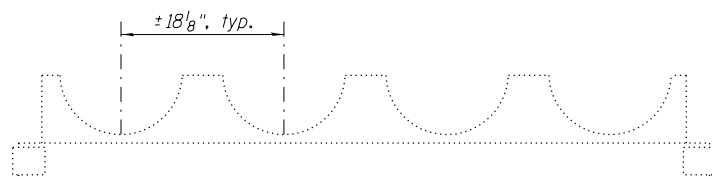
ELEVATION

BRIDGE SEAT EXTENSION ASSEMBLY

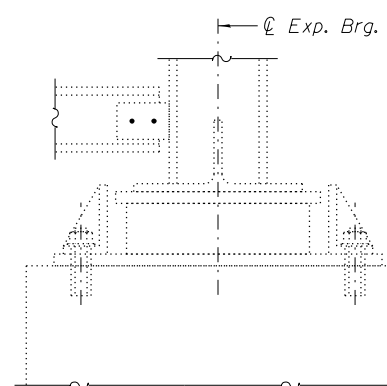
(At Expansion Bearings only)
(2 required)



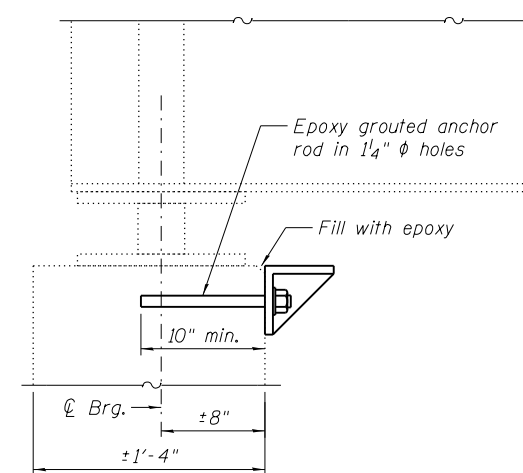
**EXISTING PIPE SUPPORT @
INTERIOR BOTTOM STRUTS**



**EXISTING PIPE SUPPORT @
PORTAL BOTTOM STRUTS**



**EXISTING EXPANSION
BEARING DETAIL**



END VIEW

Notes:
Anchor rods shall be ASTM F1554 all thread (or an Engineer approved alternate material) of the grade(s) and diameters specified. The corresponding specified grade of AASHTO M314 Anchor rods may be used.
Drilling and setting of anchor rods shall be according to article 521.06 of the Standard Specification.
The Contractor shall mark the location of existing reinforcement bars on the face of concrete. Use rebar cover-meter. The anchor rod holes shall be drilled to miss the existing reinforcement.

FILE NAME = C:\Users\A\Public\ENGINEER\Downloads\1188-3.dgn

USER NAME = seb	DESIGNED - RGB	REVISED -
PLOT SCALE = 0:2.0000 '1' / in.	DRAWN - AJF	REVISED -
PLOT DATE = 9/23/2014	CHECKED - LMS	REVISED -
	DATE - 08/22/2014	REVISED -

PIPE BRIDGE PLAN & DETAILS	
MISSOURI AVENUE DEEP WELL FACILITY	
SCALE:	SHEET 03 OF 04 SHEETS STA. TO STA.

F.A.I. RTE. 64	SECTION 82-4T-1	COUNTY ST. CLAIR	TOTAL SHEETS 185	SHEET NO. 53
CONTRACT NO. 76C99				
ILLINOIS FED. AID PROJECT				