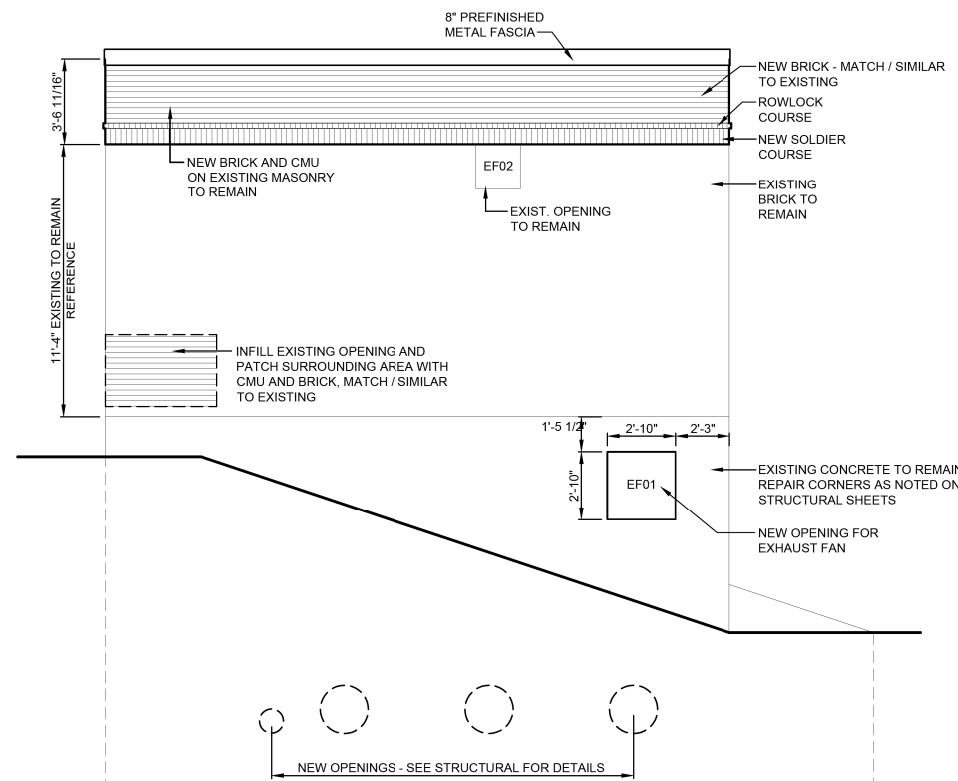


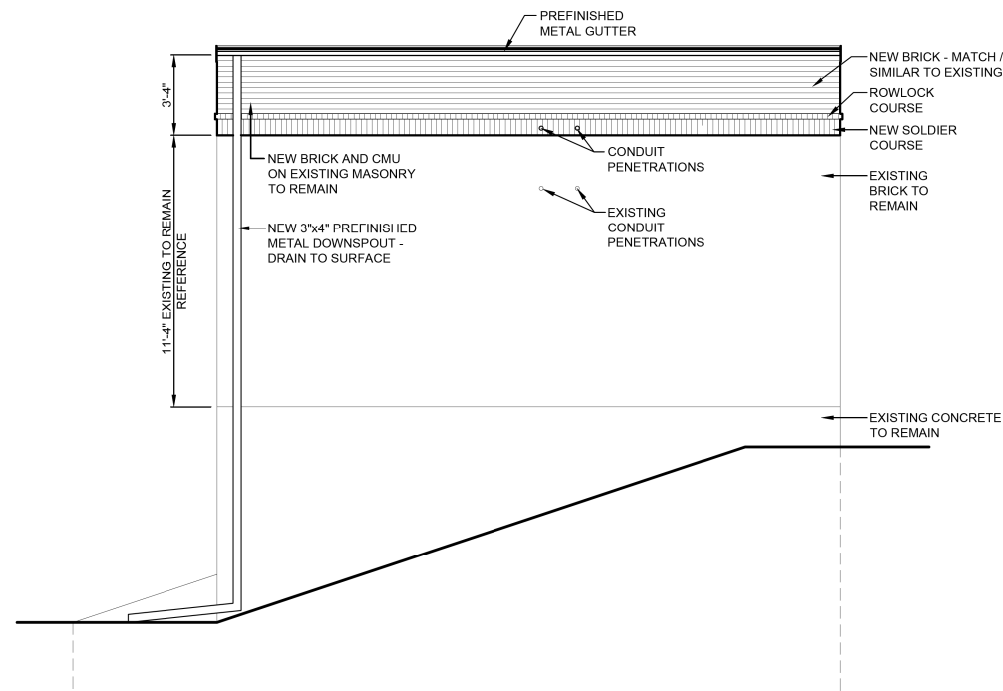
NORTH ELEVATION

SCALE: 1/4" = 1'-0"
SEE STRUCTURAL SHEETS FOR DEMOLITION NOTES



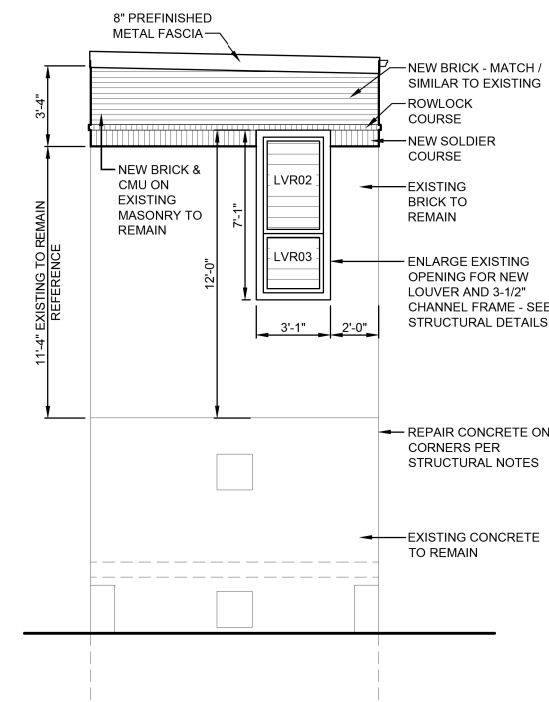
WEST ELEVATION

SCALE: 1/4" = 1'-0"
SEE STRUCTURAL SHEETS FOR DEMOLITION NOTES



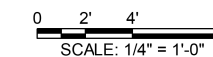
EAST ELEVATION

SCALE: 1/4" = 1'-0"
SEE STRUCTURAL SHEETS FOR DEMOLITION NOTES



SOUTH ELEVATION

SCALE: 1/4" = 1'-0"
SEE STRUCTURAL SHEETS FOR DEMOLITION NOTES



FILE NAME = G:\115\115023\Work\Drawn\3_M0_Ave_P12\ACADD_Sheets\01\115023\115023_01.dwg

USER NAME = seb	DESIGNED - DEN	REVISED -
PLOT SCALE = 40.0000' / in.	DRAWN - CRC	REVISED -
PLOT DATE = 8/23/2014	CHECKED - DEN	REVISED -
	DATE - 8/22/2014	REVISED -