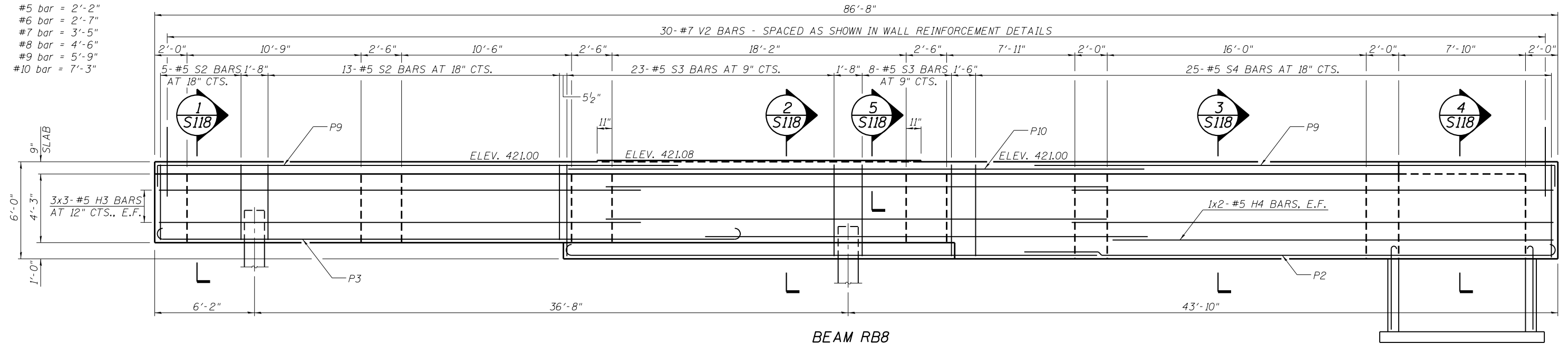


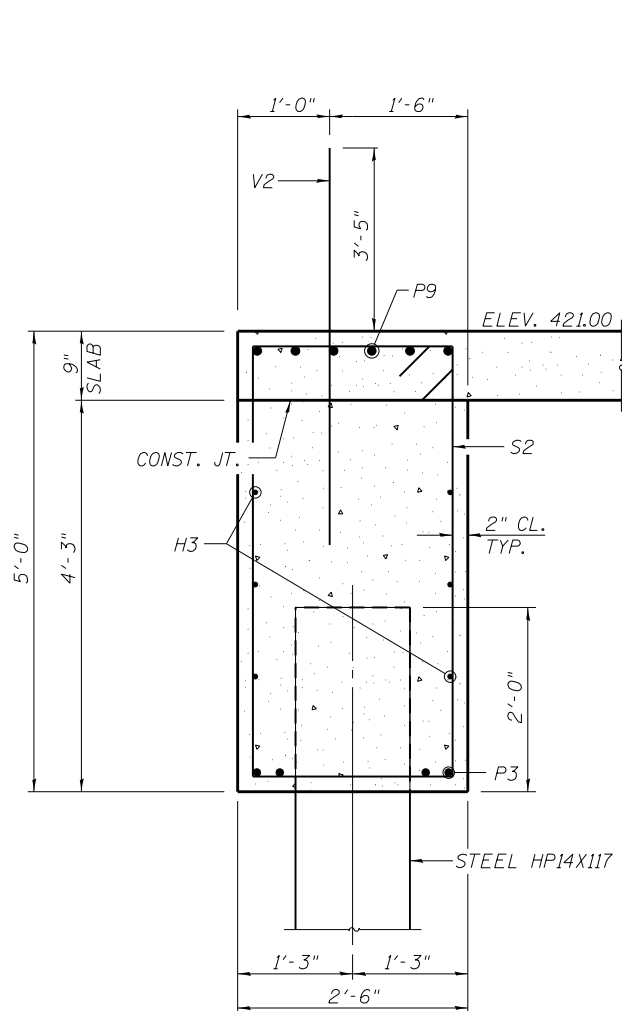
**MINIMUM BAR LAP**

- #5 bar = 2'-2"
- #6 bar = 2'-7"
- #7 bar = 3'-5"
- #8 bar = 4'-6"
- #9 bar = 5'-9"
- #10 bar = 7'-3"

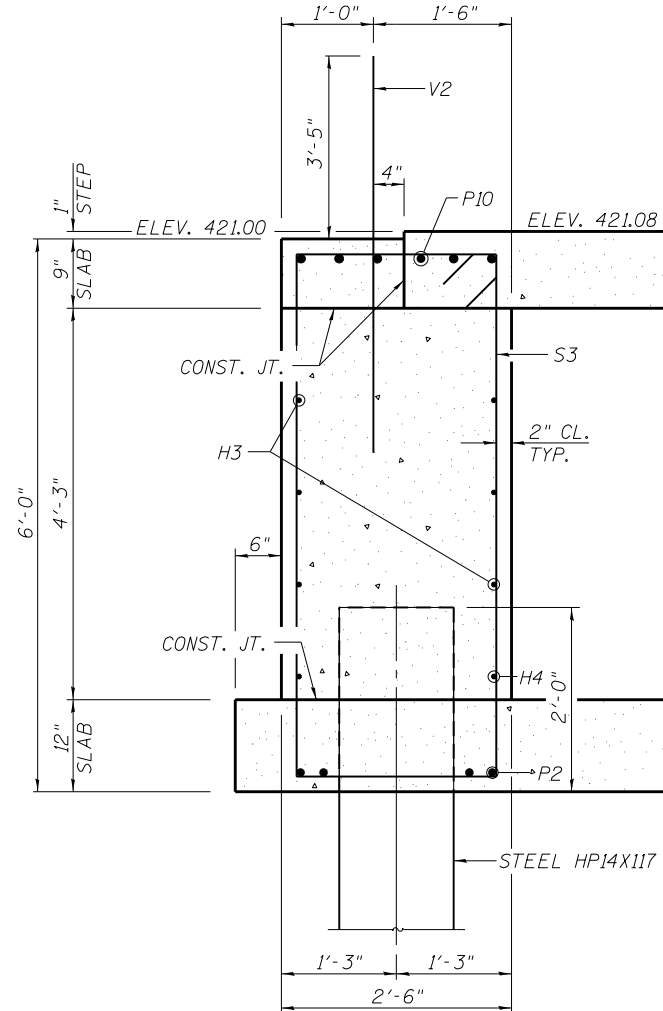


**BEAM RB8**  
(LOOKING EAST)

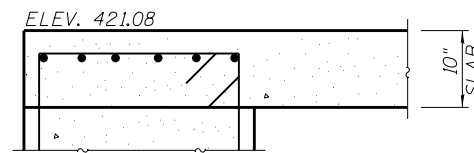
NOTE:  
BARS INDICATED THUS 3X3-#5 ETC. INDICATES  
3 LINES OF BARS WITH 3 LENGTHS PER LINE.



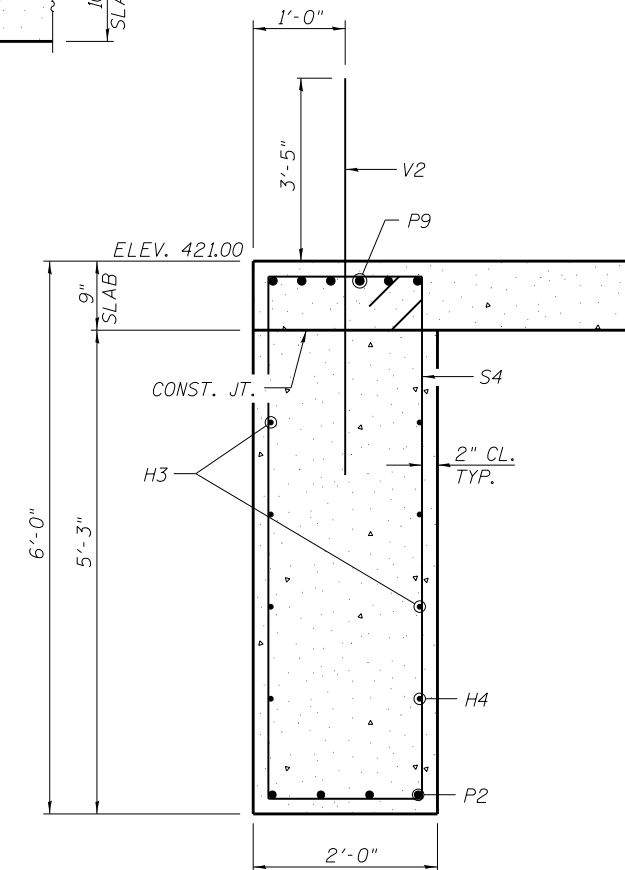
**SECTION 1**  
**S118**



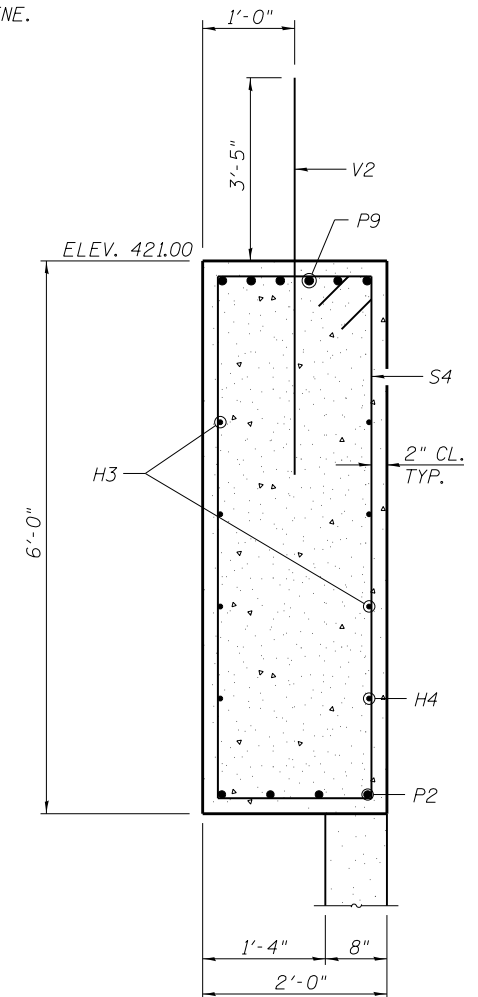
**SECTION 2**  
**S118**



**SECTION 5**  
**S118**



**SECTION 3**  
**S118**



**SECTION 4**  
**S118**

FILE NAME = G:\115\115023\Work\_Drwn\_3\_M0\_Ave\_Riz2\CAD\Structs\Grade Beam\_Plan.dgn

**KLINGNER & ASSOCIATES, P.C.**  
Engineers • Architects • Surveyors

USER NAME = seb  
PLOT SCALE = 25.0007' / in.  
PLOT DATE = 8/23/2014

DESIGNED - RJP  
DRAWN - ADL  
CHECKED - RJP  
DATE - ADL

REVISED -  
REVISED -  
REVISED -  
REVISED -

**STATE OF ILLINOIS**  
**DEPARTMENT OF TRANSPORTATION**

**WELL HOUSE BLDG - CONCRETE BEAM DETAILS**  
**MISSOURI AVENUE DEEP WELL FACILITY**

SCALE: SHEET OF SHEETS STA. TO STA.

F.A.I. RTE.	SECTION	COUNTY	TOTAL SHEETS	SHEET NO.
64	82-4T-1	ST. CLAIR	185	96
CONTRACT NO. 76C99				
ILLINOIS FED. AID PROJECT				

**S118**