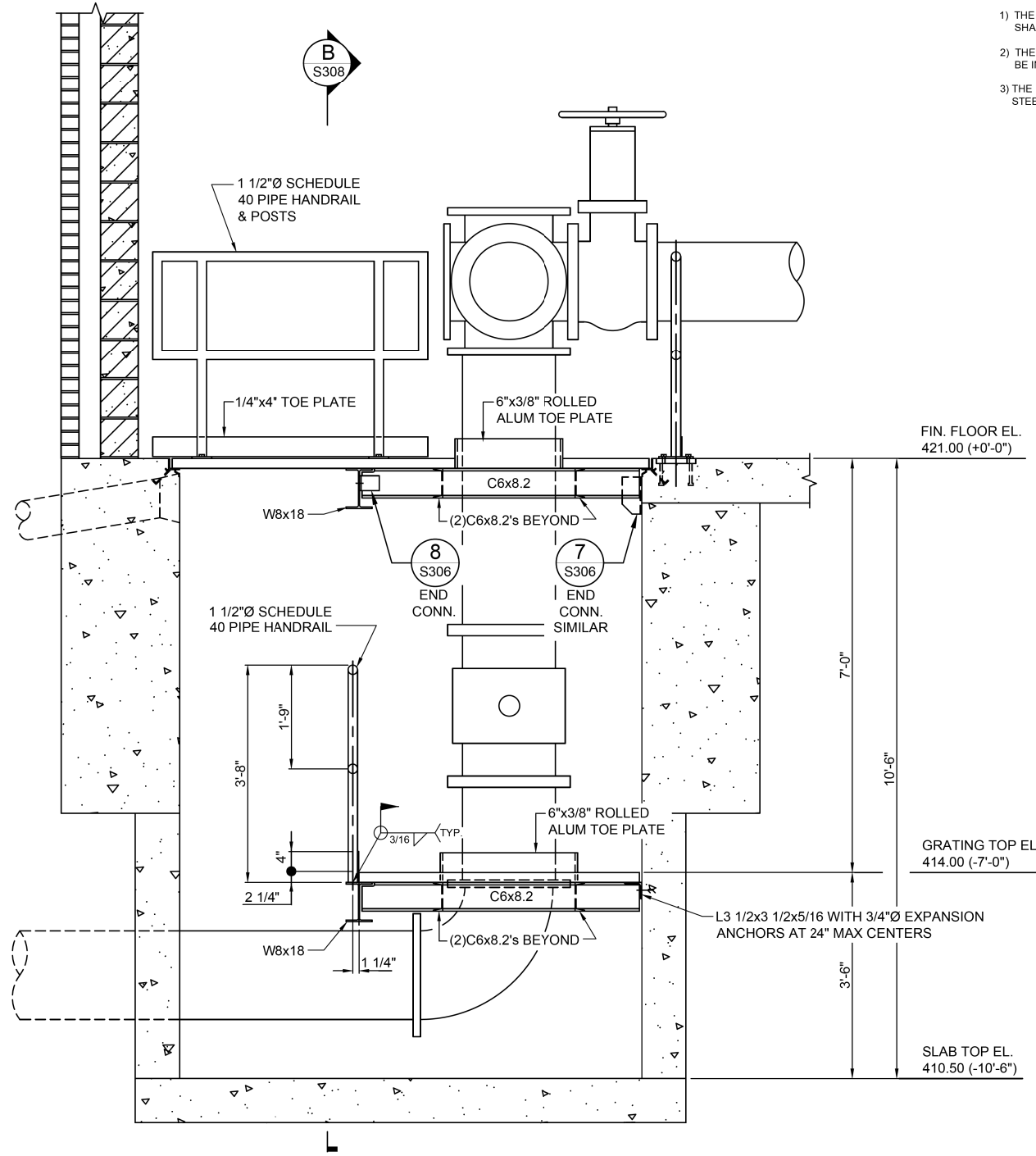
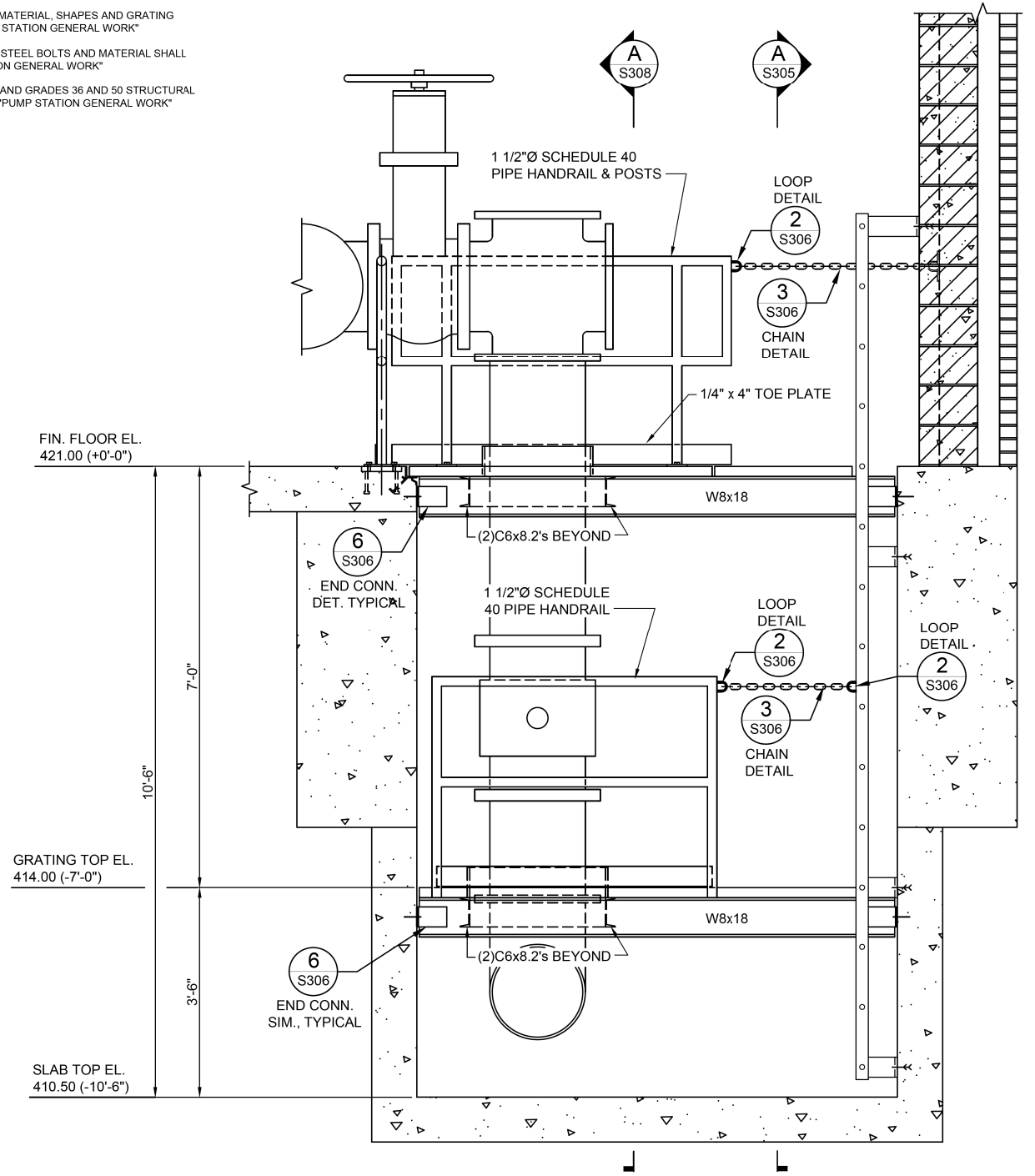


***NOTE:**

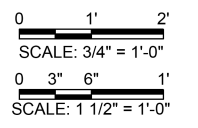
- 1) THE PRICE OF ALL ALUMINUM MATERIAL, SHAPES AND GRATING SHALL BE INCLUDED IN "PUMP STATION GENERAL WORK"
- 2) THE PRICE OF ALL STAINLESS STEEL BOLTS AND MATERIAL SHALL BE INCLUDED IN "PUMP STATION GENERAL WORK"
- 3) THE PRICE OF ALL HANDRAILS AND GRADES 36 AND 50 STRUCTURAL STEEL SHALL BE INCLUDED IN "PUMP STATION GENERAL WORK"



A SECTION
S308 SCALE: 3/4"=1'-0"



B SECTION
S308 SCALE: 3/4"=1'-0"



FILE NAME = G:\115\115023\Work Drawn 3 MO Ave P12\CAD\Struct\0876599-ahc-KL.A_S308.dwg

KLINGNER & ASSOCIATES, P.C.
Engineers • Architects • Surveyors

USER NAME = bgj	DESIGNED - seb	REVISED -
PLOT SCALE = 48.0000' / in.	DRAWN - seb	REVISED -
PLOT DATE = 8/23/2014	CHECKED -	REVISED -
	DATE -	REVISED -

STATE OF ILLINOIS
DEPARTMENT OF TRANSPORTATION

WELL HOUSE BUILDING - STRUCTURAL DETAILS
MISSOURI AVENUE DEEP WELL FACILITY
SCALE: AS NOTED SHEET 8 OF 10 SHEETS STA. TO STA.

F.A.I. RTE. 64	SECTION 82-4T-1	COUNTY ST. CLAIR	TOTAL SHEETS 185	SHEET NO. 112
CONTRACT NO. 76C99				
ILLINOIS FED. AID PROJECT				

S308