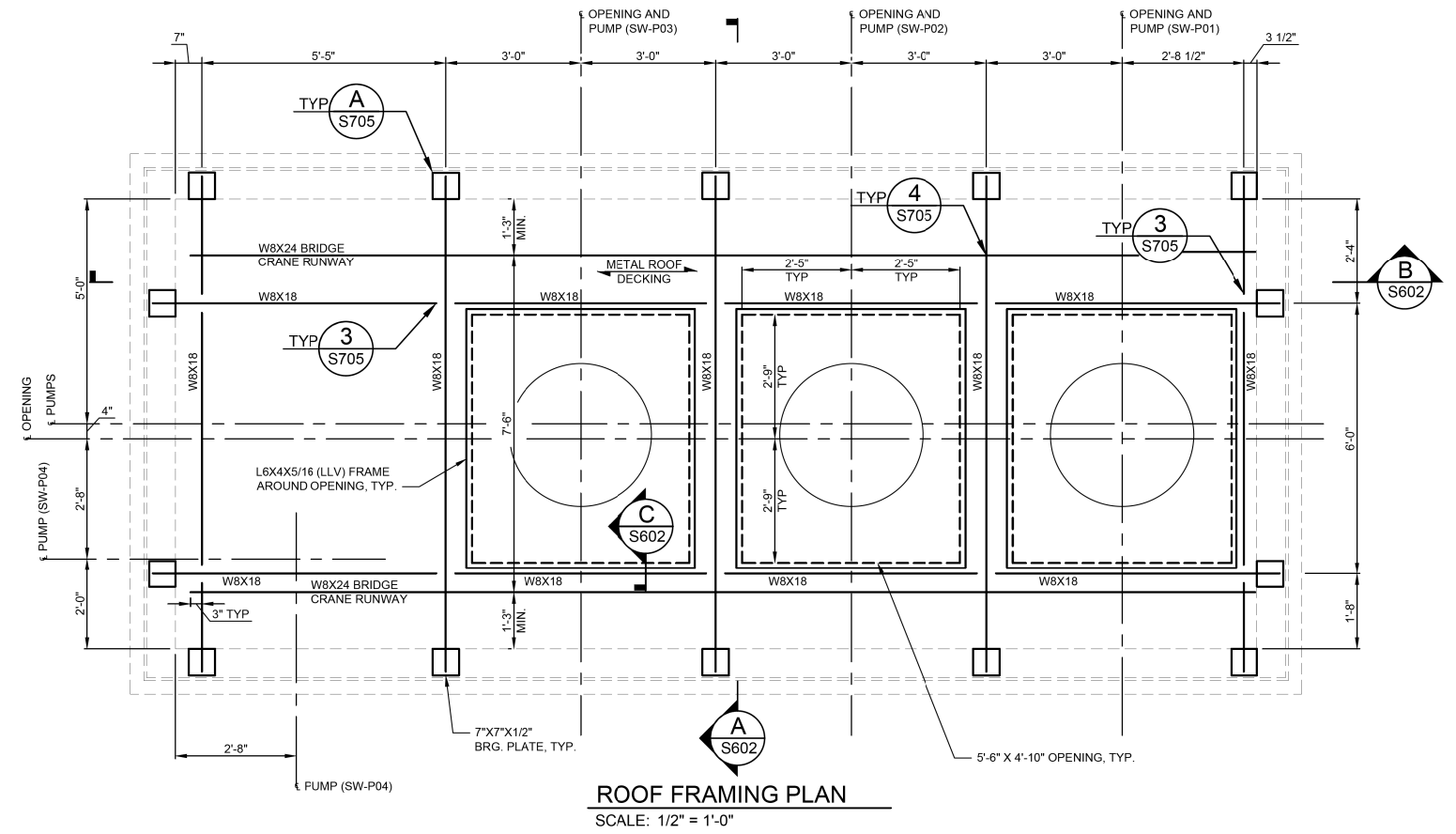
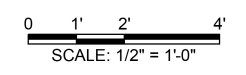


FOUNDATION PLAN - ELEV. 418.64
SCALE: 1/2" = 1'-0"

- *NOTE:
- 1) REBAR AND ANCHORS SHALL BE EPOXY GROUTED INTO EX. CONC. WITH HILTI HIT-HY 150MAX-SD, OR APPROVED EQUAL * PRICE INCLUDED IN "CONCRETE STRUCTURES"
 - 2) EXISTING CONCRETE SURFACE IN CONTACT WITH NEW CONCRETE SHALL BE CLEANED AND COATED WITH EPOXY BONDING AGENT, PRIOR TO CONCRETE INSTALLATION. * PRICE INCLUDED IN "CONCRETE STRUCTURES"
 - 3) THE PRICE OF ALL ALUMINUM MATERIAL, SHAPES AND GRATING SHALL BE INCLUDED IN "PUMP STATION GENERAL WORK"
 - 4) THE PRICE OF ALL STAINLESS STEEL BOLTS AND MATERIAL SHALL BE INCLUDED IN "PUMP STATION GENERAL WORK"
 - 5) THE PRICE OF ALL HANDRAILS AND GRADES 36 AND 50 STRUCTURAL STEEL SHALL BE INCLUDED IN "PUMP STATION GENERAL WORK"



ROOF FRAMING PLAN
SCALE: 1/2" = 1'-0"



FILE NAME = G:\115\115023\Work_Drwnr_3_M0_Ave_P12\ACADD_Sheets\115023\115023-115023.dwg

KLINGNER & ASSOCIATES, P.C.
Engineers • Architects • Surveyors

USER NAME = seb
PLOT SCALE = 40.0000' / in.
PLOT DATE = 9/25/2014

DESIGNED - ADL	REVISED - AMS - 9/25/14
DRAWN - AMS	REVISED -
CHECKED -	REVISED -
DATE -	REVISED -

**STATE OF ILLINOIS
DEPARTMENT OF TRANSPORTATION**

EXISTING PUMP STATION BUILDING - ROOF FRAMING & FOUNDATION
MISSOURI AVENUE DEEP WELL FACILITY
SCALE: AS NOTED SHEET 2 OF 2 SHEETS STA. TO STA.

F.A.I. RTE.		SECTION	COUNTY	TOTAL SHEETS	SHEET NO.
64		82-4T-1	ST. CLAIR	185	123
					CONTRACT NO. 76C99
ILLINOIS FED. AID PROJECT					

S504