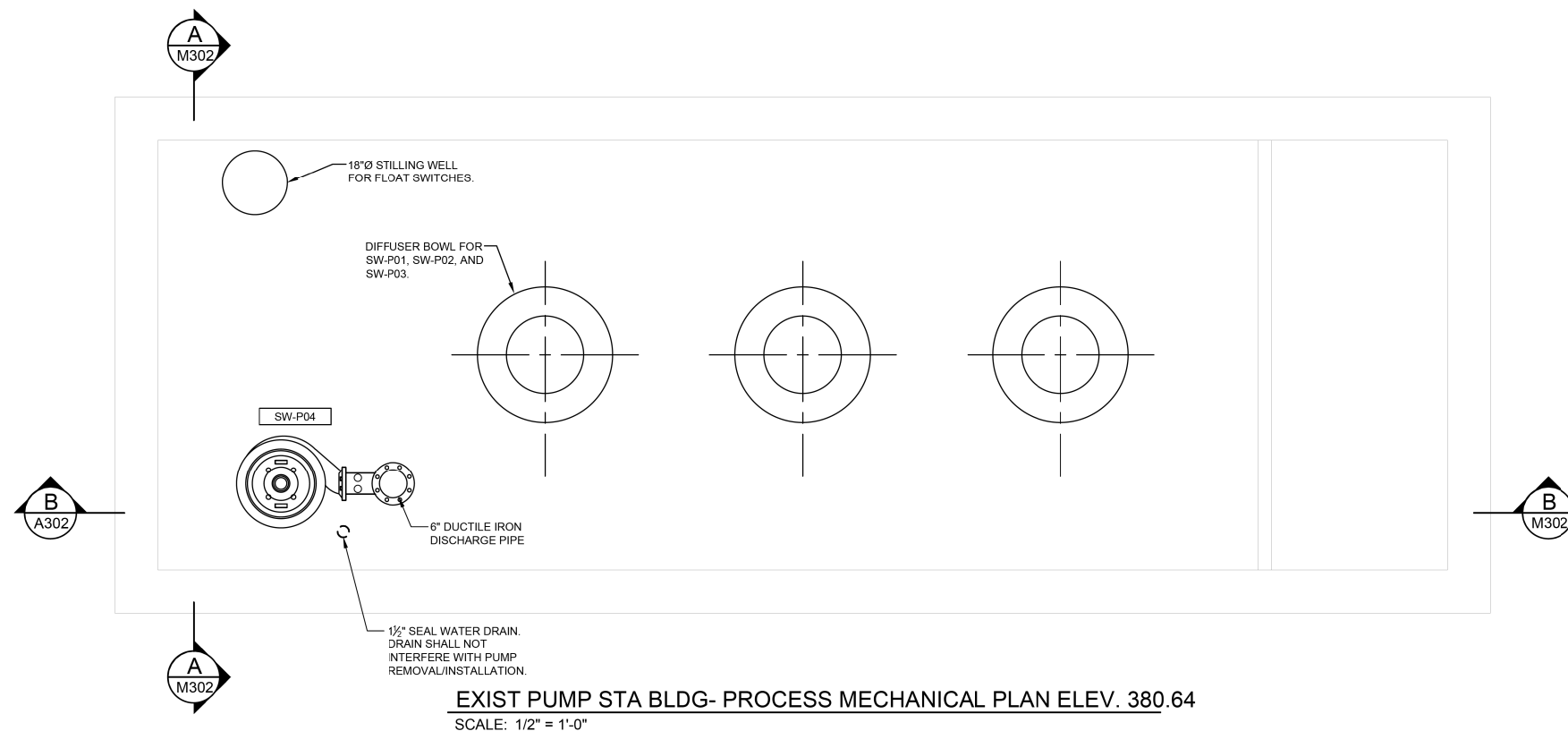


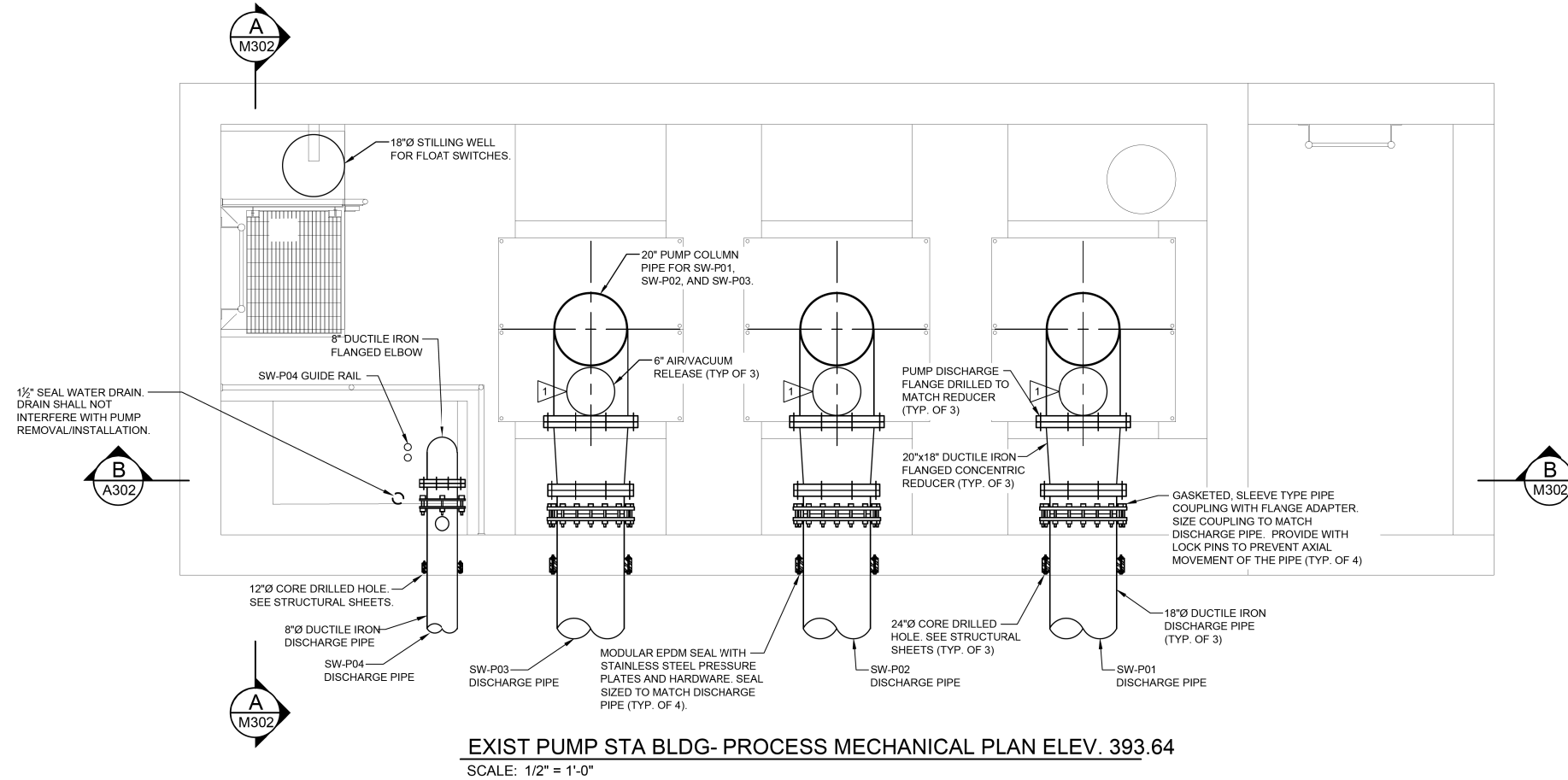
THE STORMWATER PUMP STATION ELECTRICAL CLASSIFICATION IS CLASS 1, DIVISION 2, GROUP D. ALL EQUIPMENT INSTALLED AND INSTALLATION METHODS WITHIN OR ON THE STORMWATER PUMP STATION SHALL BE SUITABLE FOR THIS CLASSIFICATION.

**KEYED NOTES** (NOTES APPLICABLE TO THIS SHEET ONLY)

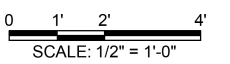
1 PUMP SHALL BE PROVIDED WITH 6" FLANGED CONNECTION (ALONG WITH 6" BLIND FLANGES) ON TOP OF DISCHARGE ELBOW FOR MOUNTING OF AIR/VACUUM RELEASE. PROVIDE HANGER ON SIDE OF DISCHARGE ELBOW FOR 6" BLIND FLANGES.



**EXIST PUMP STA BLDG- PROCESS MECHANICAL PLAN ELEV. 380.64**  
SCALE: 1/2" = 1'-0"



**EXIST PUMP STA BLDG- PROCESS MECHANICAL PLAN ELEV. 393.64**  
SCALE: 1/2" = 1'-0"



FILE NAME = G:\115\115023\Work\_Drwn\_3\_M0 Ave\_P12\ACDD\_Sheets\115023-115023-Mech3.dgn

**KLINGNER & ASSOCIATES, P.C.**  
Engineers • Architects • Surveyors

USER NAME = seb  
PLOT SCALE = 40.0000' / in.  
PLOT DATE = 8/23/2014

DESIGNED - JJN  
DRAWN - JJN  
CHECKED -  
DATE -

REVISED -  
REVISED -  
REVISED -  
REVISED -

**STATE OF ILLINOIS  
DEPARTMENT OF TRANSPORTATION**

**EXISTING PUMP STATION BUILDING - PROCESS MECHANICAL  
MISSOURI AVENUE DEEP WELL FACILITY**  
SCALE: AS NOTED SHEET 1 OF 3 SHEETS STA. TO STA.

F.A.I. RTE.	SECTION	COUNTY	TOTAL SHEETS	SHEET NO.
64	82-4T-1	ST. CLAIR	185	148
CONTRACT NO. 76C99				
ILLINOIS FED. AID PROJECT				

**M300**