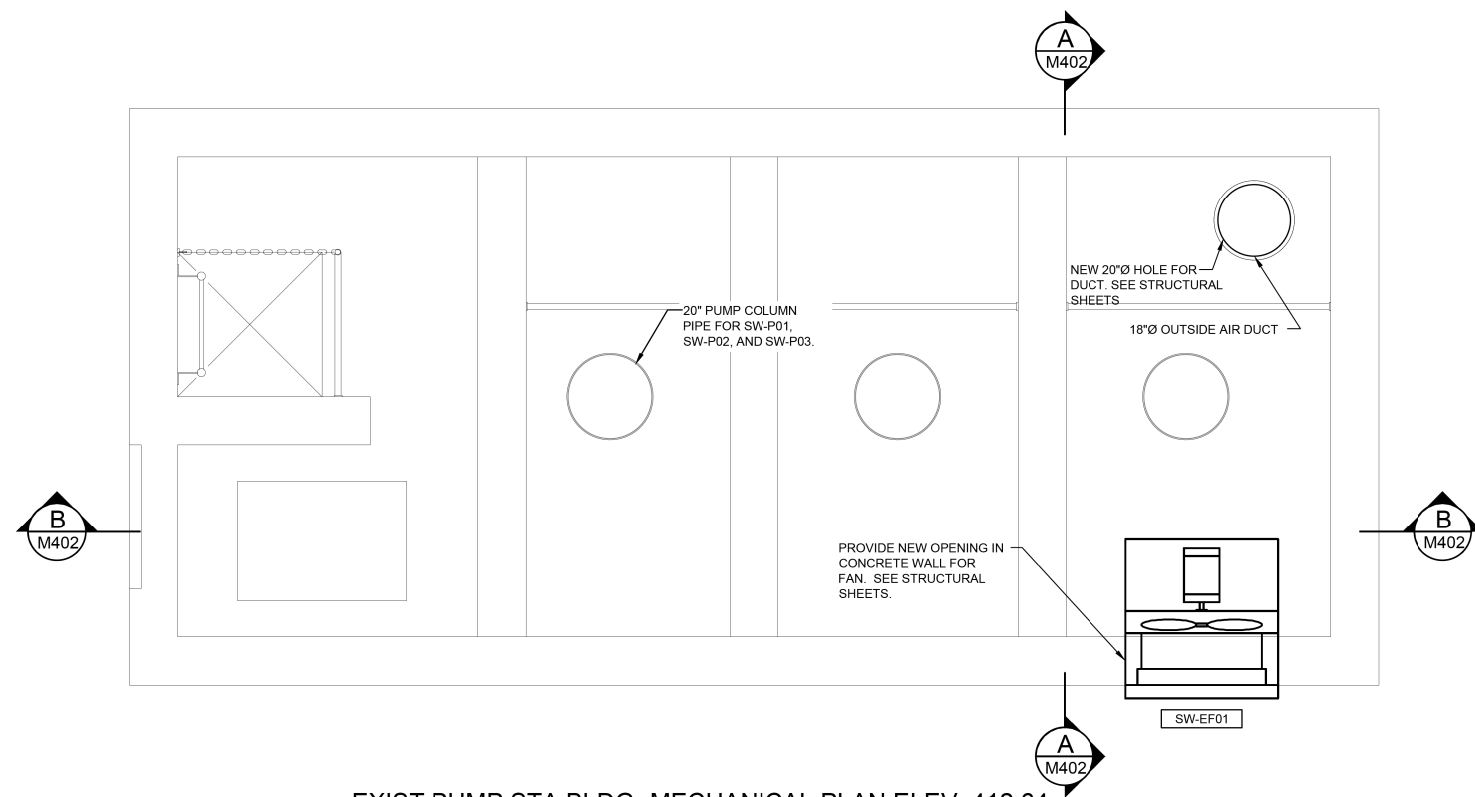
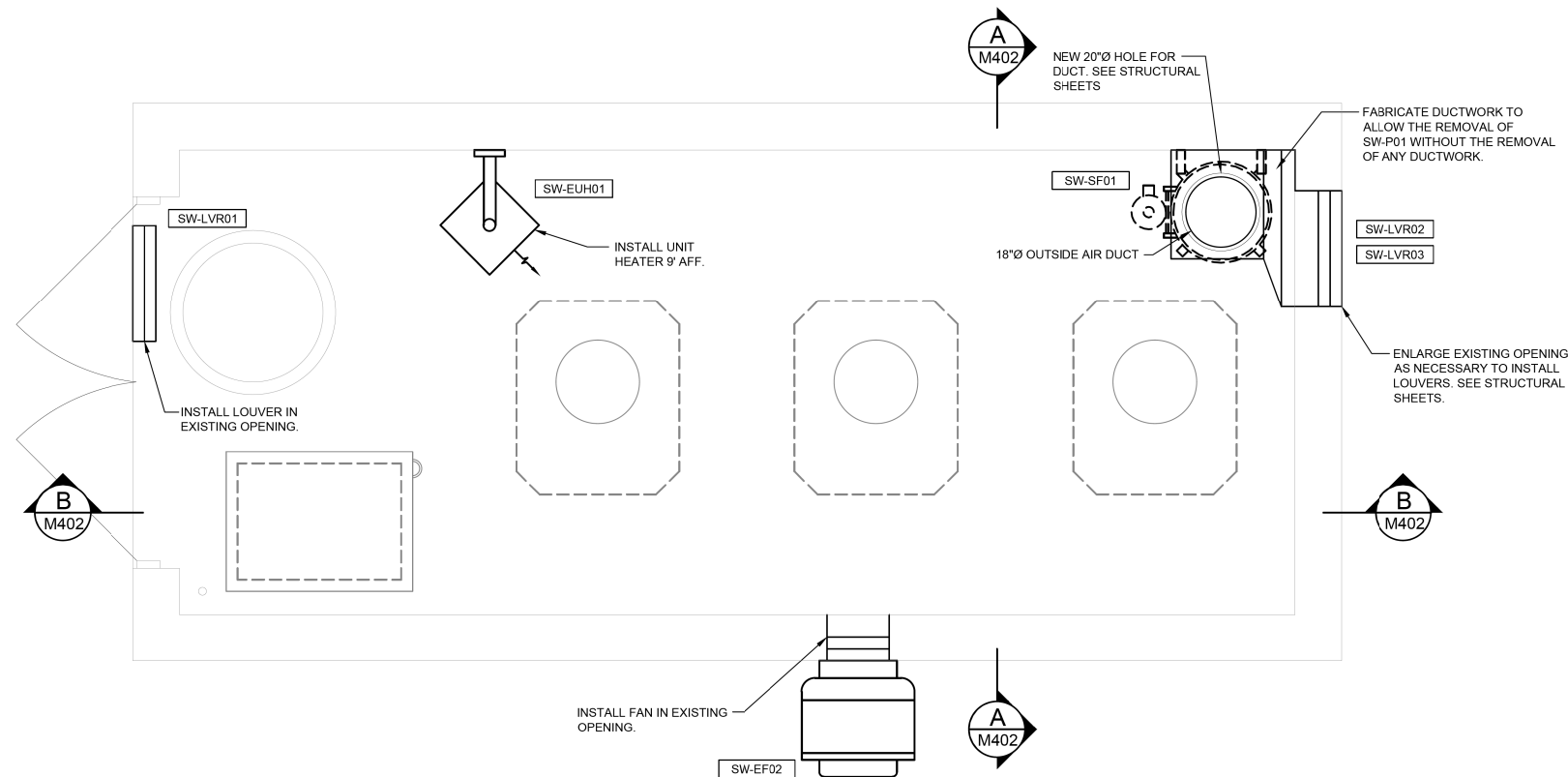


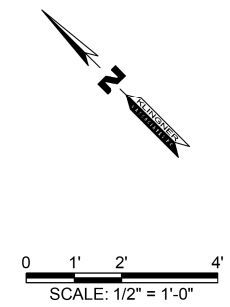
THE STORMWATER PUMP STATION ELECTRICAL CLASSIFICATION IS CLASS 1, DIVISION 2, GROUP D. ALL EQUIPMENT INSTALLED AND INSTALLATION METHODS WITHIN OR ON THE STORMWATER PUMP STATION SHALL BE SUITABLE FOR THIS CLASSIFICATION.



EXIST PUMP STA BLDG- MECHANICAL PLAN ELEV. 412.64
SCALE: 1/2" = 1'-0"



EXIST PUMP STA BLDG- MECHANICAL PLAN ELEV. 418.64
SCALE: 1/2" = 1'-0"



FILE NAME = G:\11\11\110223\Work_Drwnr_3_M0_Avg_P12\ACADD_Sheets\110223\110223-Mech4.dgn

KLINGNER & ASSOCIATES, P.C.
Engineers • Architects • Surveyors

USER NAME = seb	DESIGNED - JUN	REVISED -
	DRAWN - JUN	REVISED -
PLOT SCALE = 40.0000' / in.	CHECKED -	REVISED -
PLOT DATE = 8/23/2014	DATE -	REVISED -

STATE OF ILLINOIS
DEPARTMENT OF TRANSPORTATION

EXISTING PUMP STATION BUILDING - MECHANICAL
MISSOURI AVENUE DEEP WELL FACILITY
SCALE: AS NOTED SHEET 2 OF 3 SHEETS STA. TO STA.

F.A.I. RTE.	SECTION	COUNTY	TOTAL SHEETS	SHEET NO.
64	82-4T-1	ST. CLAIR	185	152
CONTRACT NO. 76C99				
ILLINOIS FED. AID PROJECT				

M401