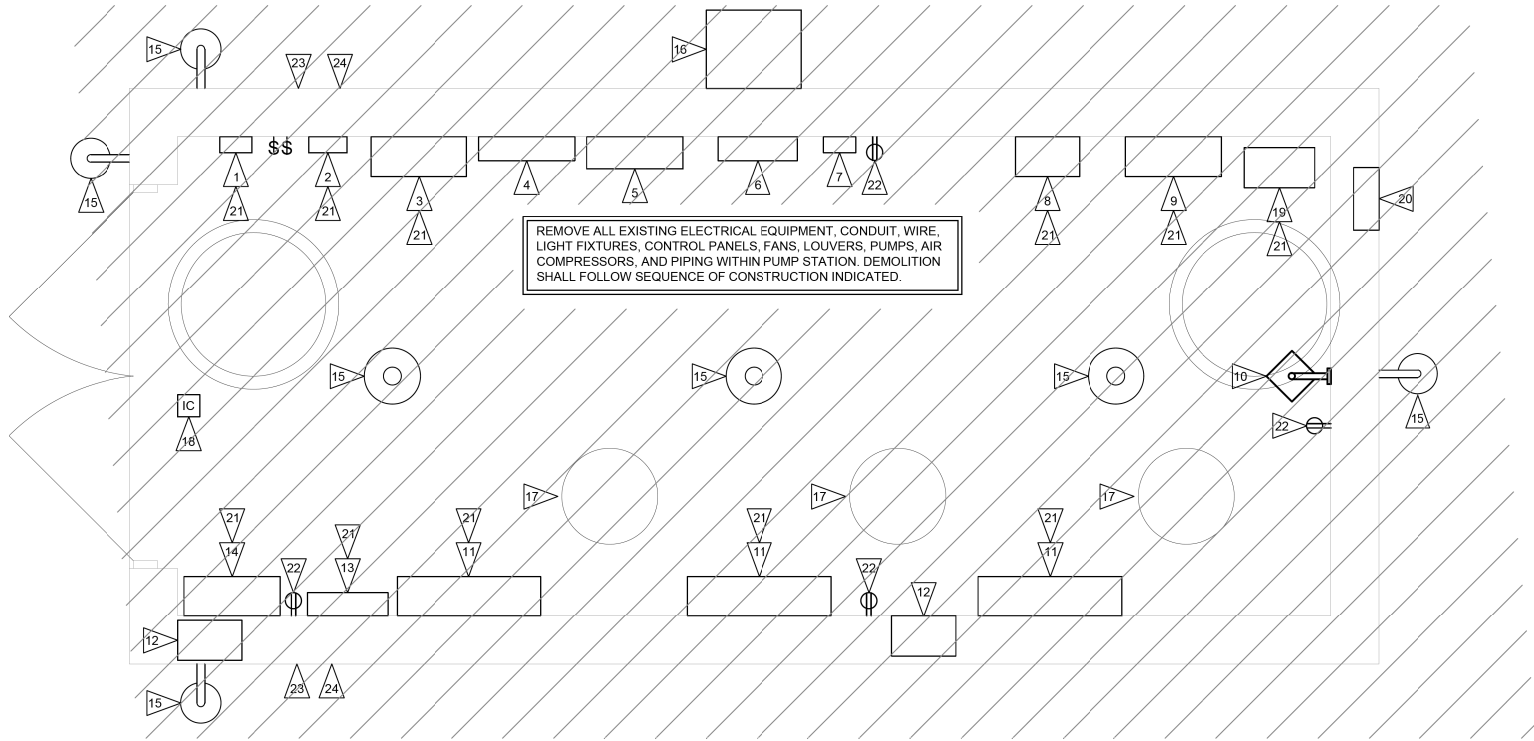


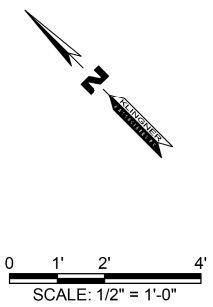
EXIST PUMP STA BLDG- DEMOLITION PLAN ELEV. 412.64
SCALE: 1/2" = 1'-0"



EXIST PUMP STA BLDG- DEMOLITION PLAN ELEV. 418.64
SCALE: 1/2" = 1'-0"

KEYED NOTES (NOTES APPLICABLE TO THIS SHEET ONLY)

- 1 GENERATOR ANNUNCIATOR PANEL
- 2 BATTERY CHARGER
- 3 AUTOMATIC TRANSFER SWITCH
- 4 MAIN CIRCUIT BREAKER FOR STORMWATER PUMPS
- 5 480V DISTRIBUTION PANEL
- 6 120/208V LIGHTING PANEL
- 7 TIMECLOCK
- 8 DIALER PANEL
- 9 BUBBLER SYSTEM CONTROL PANEL
- 10 ELECTRIC UNIT HEATER
- 11 PUMP CONTROL PANEL
- 12 SUPPLY FAN
- 13 TEMPORARY WELL STARTER
- 14 WELL #6 STARTER
- 15 LIGHT FIXTURE
- 16 TRANSFORMER
- 17 SUBMERSIBLE PUMP TUBE
- 18 DOOR LIMIT SWITCH
- 19 AIR COMPRESSOR
- 20 BAROMETRIC RELIEF DAMPER
- 21 EQUIPMENT SHALL BE RETAINED BY OWNER. CONTRACTOR SHALL REMOVE EQUIPMENT AND PROVIDE TO OWNER FOR RE-USE.
- 22 RECEPTACLE
- 23 ALL EXPOSED CONDUIT ON OUTSIDE OF BUILDING SHALL BE REMOVED TO AT LEAST 12" BELOW GRADE.
- 24 ALL FORMER CONDUIT PENETRATION IN EXTERIOR WALL TO BE FILLED WITH GROUT COLORED TO MATCH BRICK.



FILE NAME = G:\115\115023\Work_Drwnr_3_MO_Ave_P12\AC000_Sheets\0876699-arch-KL.A_Elec.dgn

KLINGNER & ASSOCIATES, P.C.
Engineers • Architects • Surveyors

USER NAME = seb	DESIGNED - JUN	REVISED - JUN - 9/24/14
PLOT SCALE = 40.0000' / in.	DRAWN - JUN	REVISED -
PLOT DATE = 9/24/2014	CHECKED -	REVISED -
	DATE -	REVISED -

**STATE OF ILLINOIS
DEPARTMENT OF TRANSPORTATION**

EXISTING PUMP STATION BUILDING - DEMOLITION PLANS
MISSOURI AVENUE DEEP WELL FACILITY

SCALE: AS NOTED SHEET 2 OF 2 SHEETS STA. TO STA.

F.A.I. RTE.	SECTION	COUNTY	TOTAL SHEETS	SHEET NO.
64	82-4T-1	ST. CLAIR	185	164
CONTRACT NO. 76C99				
ILLINOIS FED. AID PROJECT				

E401