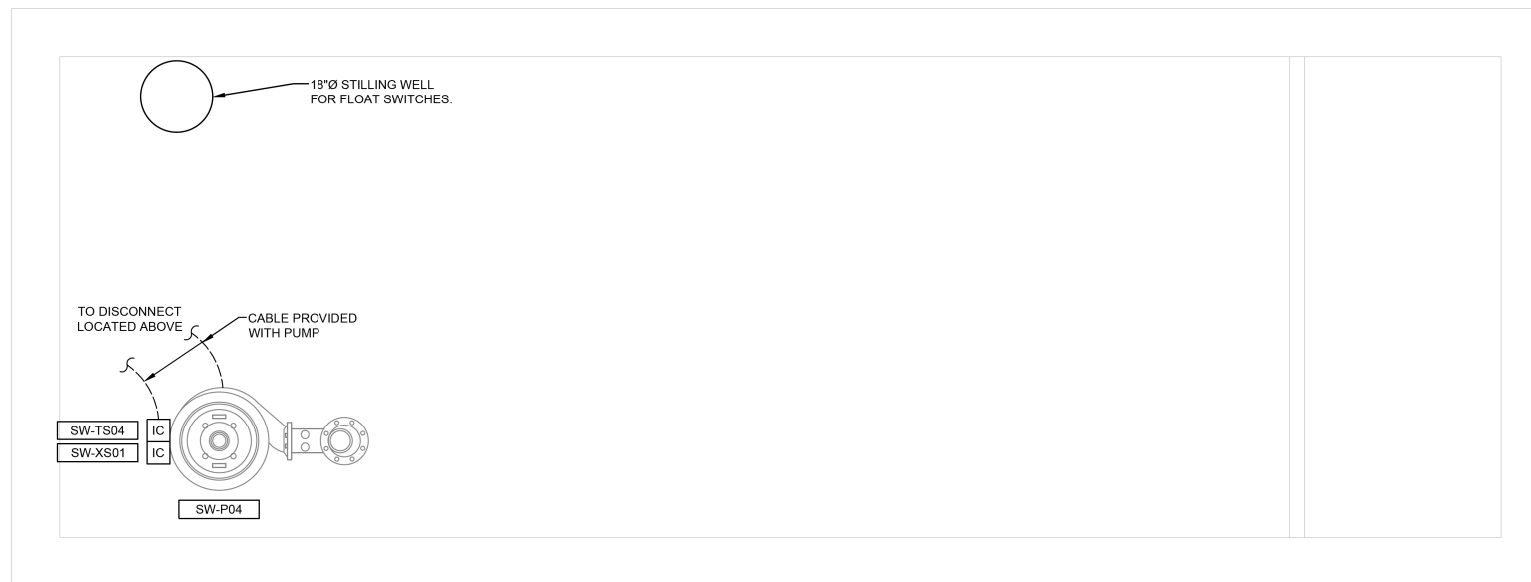
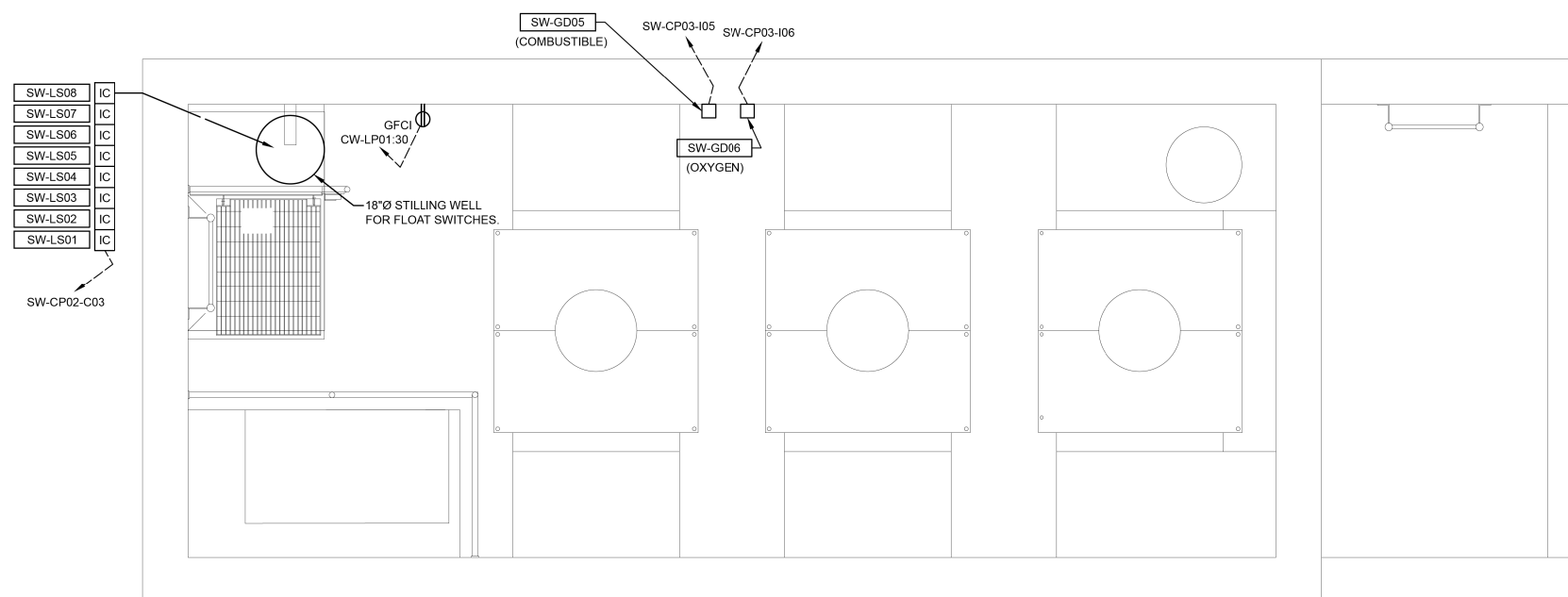


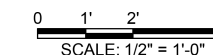
THE STORMWATER PUMP STATION ELECTRICAL CLASSIFICATION IS CLASS 1, DIVISION 2, GROUP D. ALL EQUIPMENT INSTALLED AND INSTALLATION METHODS WITHIN OR ON THE STORMWATER PUMP STATION SHALL BE SUITABLE FOR THIS CLASSIFICATION.



EXIST. PUMP STA BLDG - ELECTRICAL PLAN ELEV. 380.64
SCALE: 1/2" = 1'-0"



EXIST. PUMP STA BLDG - ELECTRICAL PLAN ELEV. 393.64
SCALE: 1/2" = 1'-0"



FILE NAME = G:\11\110223\Work Drawn 3 MO Ave P12\ACDD Sheets\DB76699-eh-110.4 Elec5.dgn

KLINGNER & ASSOCIATES, P.C.
Engineers • Architects • Surveyors

USER NAME = seb	DESIGNED - JUN	REVISED - JUN - 9/24/14
	DRAWN - JUN	REVISED -
PLOT SCALE = 40.0000' / in.	CHECKED -	REVISED -
PLOT DATE = 9/24/2014	DATE -	REVISED -

**STATE OF ILLINOIS
DEPARTMENT OF TRANSPORTATION**

**EXISTING PUMP STATION BUILDING - ELECTRICAL PLAN
MISSOURI AVENUE DEEP WELL FACILITY**

SCALE: AS NOTED SHEET 1 OF 2 SHEETS STA. TO STA.

F.A.I. RTE.	SECTION	COUNTY	TOTAL SHEETS	SHEET NO.
64	82-4T-1	ST. CLAIR	185	165
CONTRACT NO. 76C99				
ILLINOIS FED. AID PROJECT				

E500