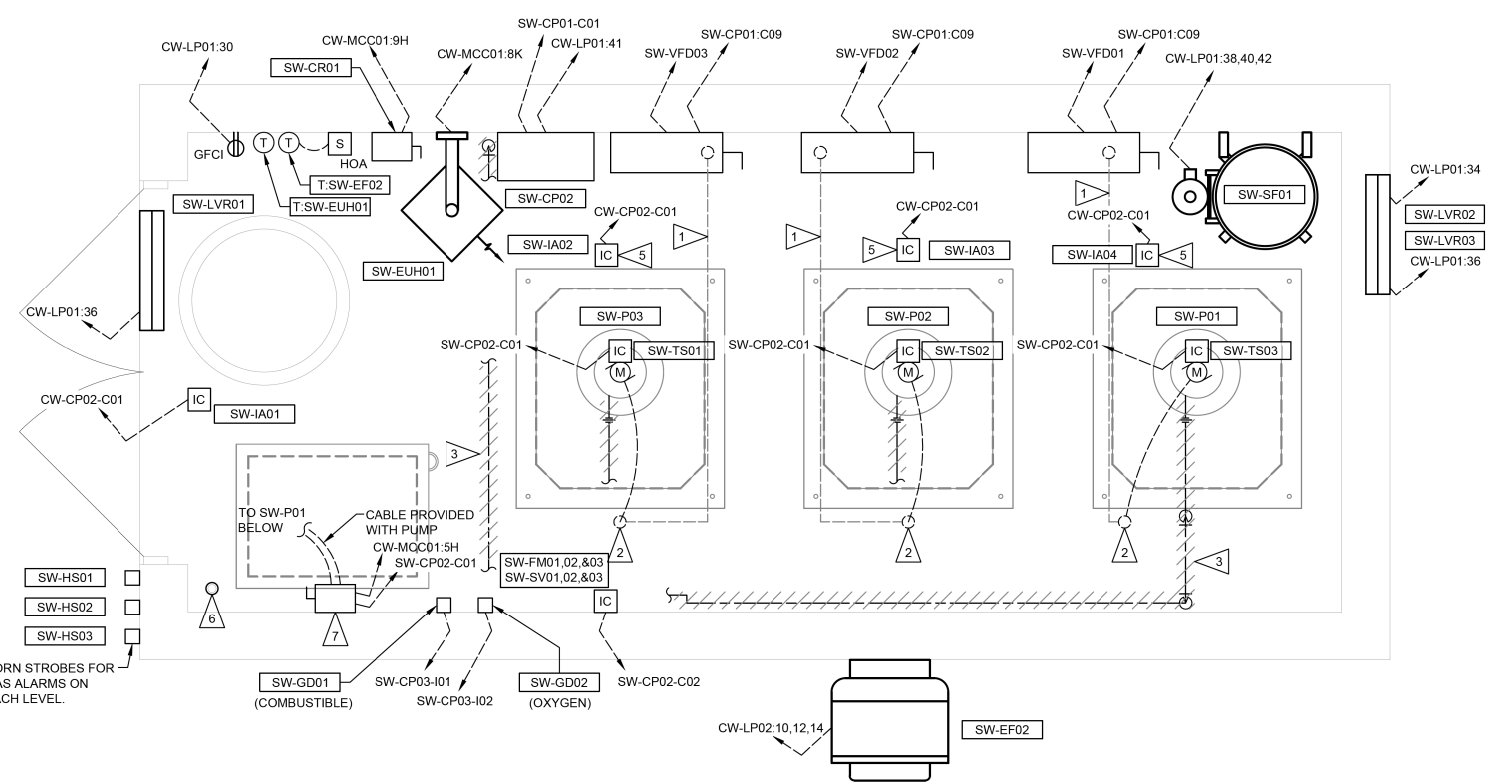


EXIST. PUMP STA BLDG - ELECTRICAL PLAN ELEV. 412.64  
SCALE: 1/2" = 1'-0"

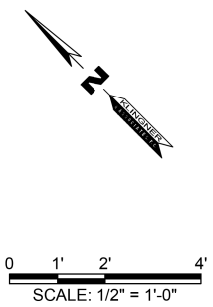
THE STORMWATER PUMP STATION ELECTRICAL CLASSIFICATION IS CLASS 1, DIVISION 2, GROUP D. ALL EQUIPMENT INSTALLED AND INSTALLATION METHODS WITHIN OR ON THE STORMWATER PUMP STATION SHALL BE SUITABLE FOR THIS CLASSIFICATION.

**KEYED NOTES** (NOTES APPLICABLE TO THIS SHEET ONLY)

- 1 CONDUIT ROUTED BELOW FLOOR
- 2 CONDUIT FLOOR PENETRATION
- 3 SEAL WATER PIPING SHALL BE HEAT TRACED. HEAT TRACE CABLE SHALL BE 120V, HAZARDOUS LOCATION, SELF REGULATING LOW TEMPERATURE CABLE WITH AN OUTPUT OF 3W/FT. PROVIDE ALL ACCESSORIES NECESSARY FOR A COMPLETE INSTALLATION INCLUDING BUT NOT LIMITED TO LINE SENSING THERMOSTAT, POWER CONNECTION, AND END SEALS.
- 4 COORDINATE CONDUIT WALL PENETRATIONS WITH PROPOSED CONCRETE WALLS.
- 5 INTRUSION ALARM ATTACHED TO ROOF HATCH ABOVE.
- 6 CORE DRILL 3" HOLE FOR PUMP CABLE PASSAGE TO LOWER LEVELS. FIELD LOCATE HOLE TO AVOID INTERFERENCES.
- 7 INSTALL DISCONNECT TO AVOID INTERFERENCE WITH FLOOR HATCH LID.
- 8 UNDERGROUND SEAL WATER PIPING IS NOT HEAT TRACED.



EXIST. PUMP STA BLDG - ELECTRICAL PLAN ELEV. 418.64  
SCALE: 1/2" = 1'-0"



FILE NAME = G:\115\115023\Work\Drawn\3 MO Ave P12\ACDD Sheets\DB76699-ah-t-KL-A\_Elec5.dgn

**KLINGNER & ASSOCIATES, P.C.**  
Engineers • Architects • Surveyors

USER NAME = seb	DESIGNED - JUN	REVISED - JUN - 9/24/14
PLOT SCALE = 40.0000' / in.	DRAWN - JUN	REVISED -
PLOT DATE = 9/24/2014	CHECKED -	REVISED -
	DATE -	REVISED -

STATE OF ILLINOIS  
DEPARTMENT OF TRANSPORTATION

EXISTING PUMP STATION BUILDING - ELECTRICAL PLAN  
MISSOURI AVENUE DEEP WELL FACILITY  
SCALE: AS NOTED SHEET 2 OF 2 SHEETS STA. TO STA.

F.A.I. RTE. 64	SECTION 82-4T-1	COUNTY ST. CLAIR	TOTAL SHEETS 185	SHEET NO. 166
CONTRACT NO. 76C99				
ILLINOIS FED. AID PROJECT				

E501