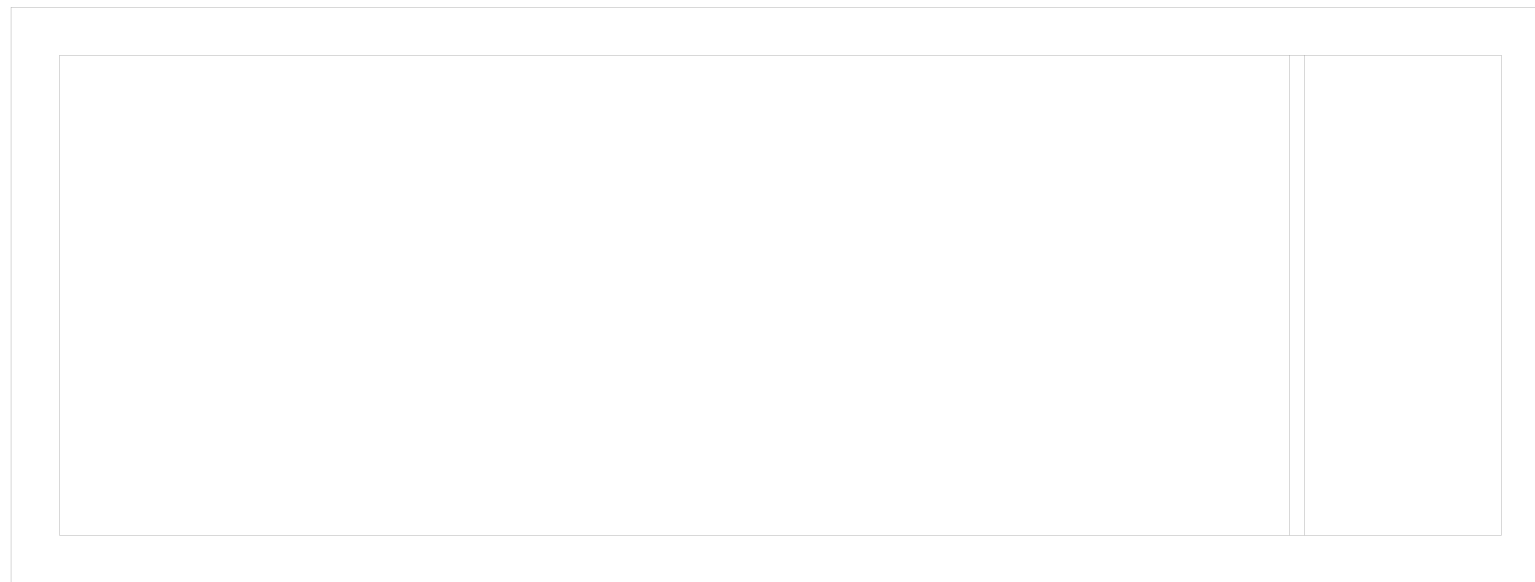
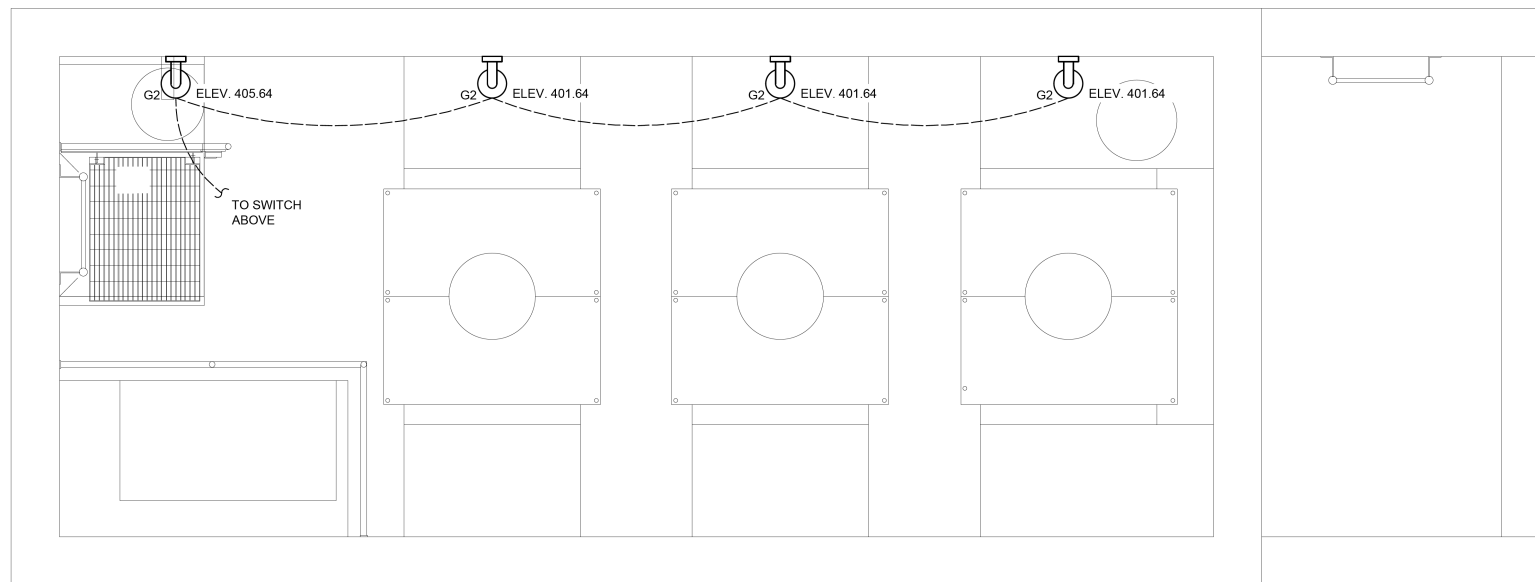


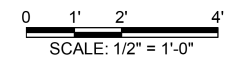
THE STORMWATER PUMP STATION ELECTRICAL CLASSIFICATION IS CLASS 1, DIVISION 2, GROUP D. ALL EQUIPMENT INSTALLED AND INSTALLATION METHODS WITHIN OR ON THE STORMWATER PUMP STATION SHALL BE SUITABLE FOR THIS CLASSIFICATION.



EXIST PUMP STA BLDG- LIGHTING PLAN ELEV. 380.64
SCALE: 1/2" = 1'-0"



EXIST PUMP STA BLDG- LIGHTING PLAN ELEV. 393.64
SCALE: 1/2" = 1'-0"



FILE NAME = G:\Illinois\110223\Work Drawn 3 MO Ave P12\ACDD Sheets\DB76C99-ht-11-14_Elec.dgn

KLINGNER & ASSOCIATES, P.C.
Engineers • Architects • Surveyors

| | | |
|-----------------------------|----------------|-------------------------|
| USER NAME = seb | DESIGNED - JUN | REVISED - JUN - 9/24/14 |
| | DRAWN - JUN | REVISED - |
| PLOT SCALE = 40.0000' / in. | CHECKED - | REVISED - |
| PLOT DATE = 9/25/2014 | DATE - | REVISED - |

**STATE OF ILLINOIS
DEPARTMENT OF TRANSPORTATION**

**EXISTING PUMP STATION BUILDING - LIGHTING PLAN
MISSOURI AVENUE DEEP WELL FACILITY**

SCALE: AS NOTED SHEET 1 OF 2 SHEETS STA. TO STA.

| | | | | |
|---------------------------|---------|-----------|--------------|-----------|
| F.A.I. RTE. | SECTION | COUNTY | TOTAL SHEETS | SHEET NO. |
| 64 | 82-4T-1 | ST. CLAIR | 185 | 167 |
| CONTRACT NO. 76C99 | | | | |
| ILLINOIS FED. AID PROJECT | | | | |

E600