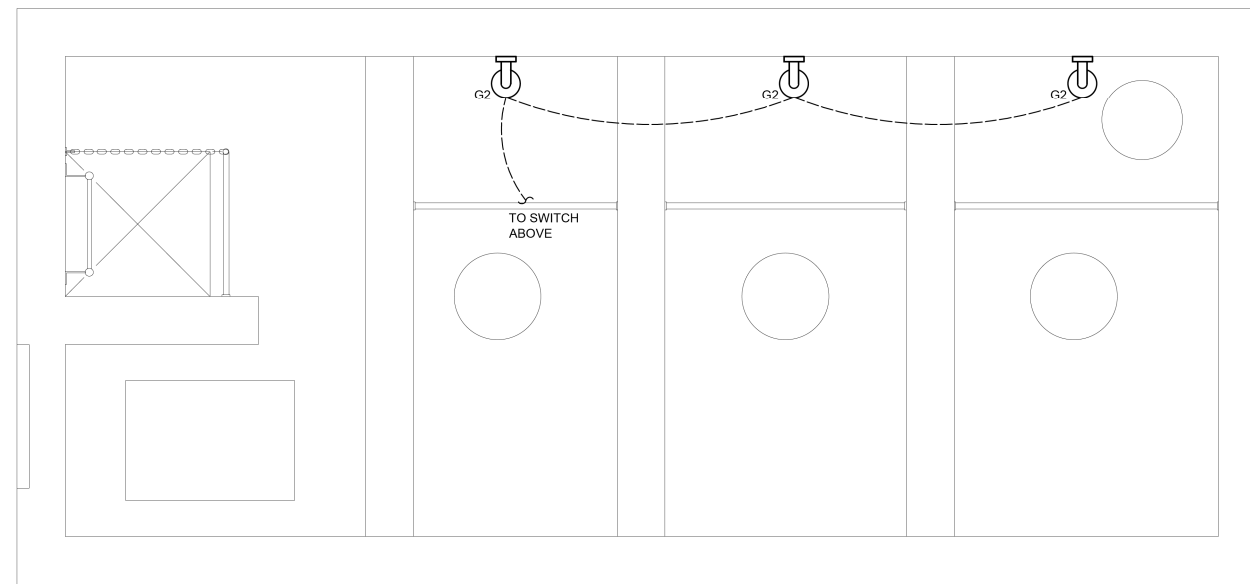


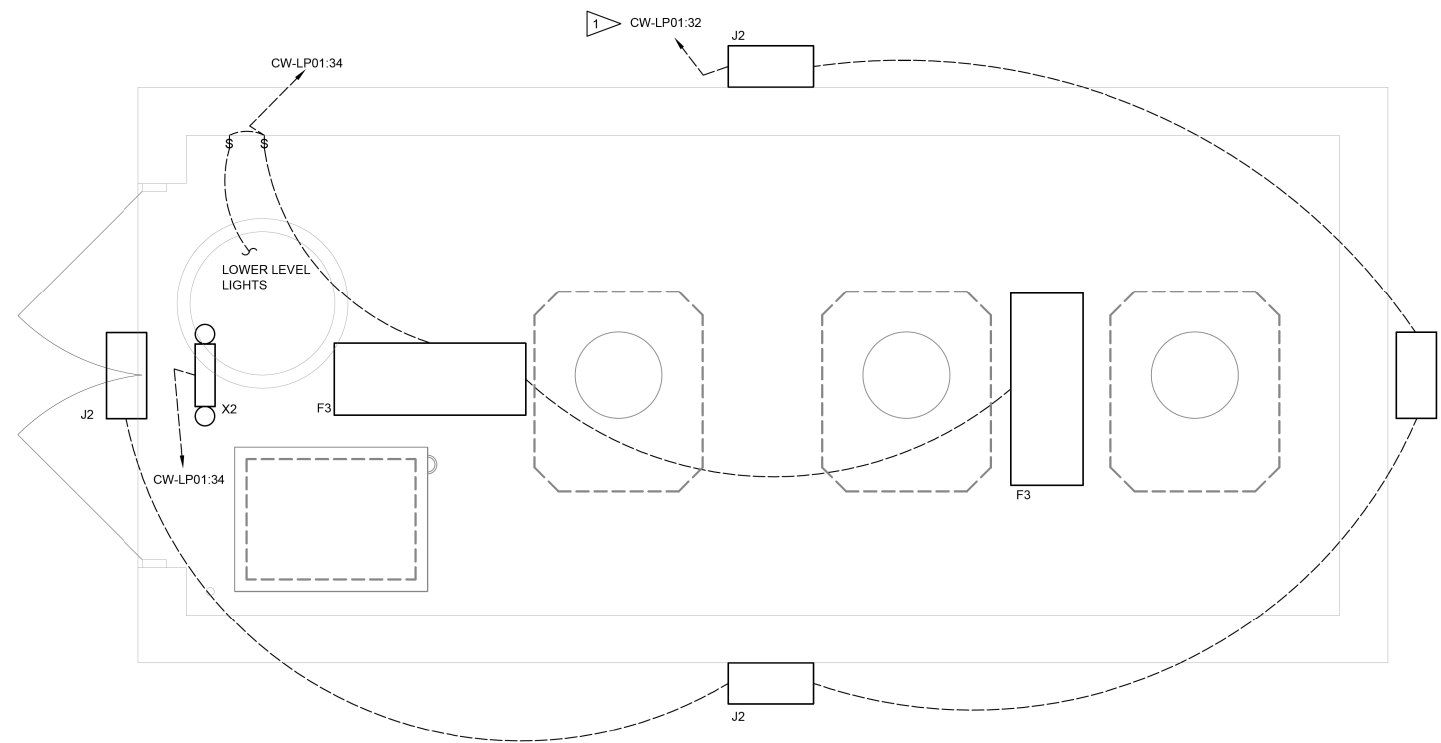
THE STORMWATER PUMP STATION ELECTRICAL CLASSIFICATION IS CLASS 1, DIVISION 2, GROUP D. ALL EQUIPMENT INSTALLED AND INSTALLATION METHODS WITHIN OR ON THE STORMWATER PUMP STATION SHALL BE SUITABLE FOR THIS CLASSIFICATION.

KEYED NOTES (NOTES APPLICABLE TO THIS SHEET ONLY)

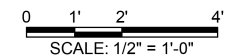
- 1 UTILIZE THE SAME PHOTOCELL/CONTACTOR USED FOR WELL BUILDING EXTERIOR LIGHTS FOR LIGHTING CONTROL.



EXIST PUMP STA BLDG- LIGHTING PLAN ELEV. 412.64
SCALE: 1/2" = 1'-0"



EXIST PUMP STA BLDG- LIGHTING PLAN ELEV. 418.64
SCALE: 1/2" = 1'-0"



FILE NAME = G:\115\115023\Work Drawn 3 MO Ave P12\ACDD Sheets\DB76699-ahc-KLQ.Elec.dgn

KLINGNER & ASSOCIATES, P.C.
Engineers • Architects • Surveyors

USER NAME = seb	DESIGNED - JUN	REVISED - JUN - 9/24/14
PLOT SCALE = 40.0000' / in.	DRAWN - JUN	REVISED -
PLOT DATE = 9/25/2014	CHECKED -	REVISED -
	DATE -	REVISED -

**STATE OF ILLINOIS
DEPARTMENT OF TRANSPORTATION**

**EXISTING PUMP STATION BUILDING - LIGHTING PLAN
MISSOURI AVENUE DEEP WELL FACILITY**

SCALE: AS NOTED SHEET 2 OF 2 SHEETS STA. TO STA.

F.A.I. RTE.	SECTION	COUNTY	TOTAL SHEETS	SHEET NO.
64	82-4T-1	ST. CLAIR	185	168
CONTRACT NO. 76C99				
ILLINOIS FED. AID PROJECT				

E601