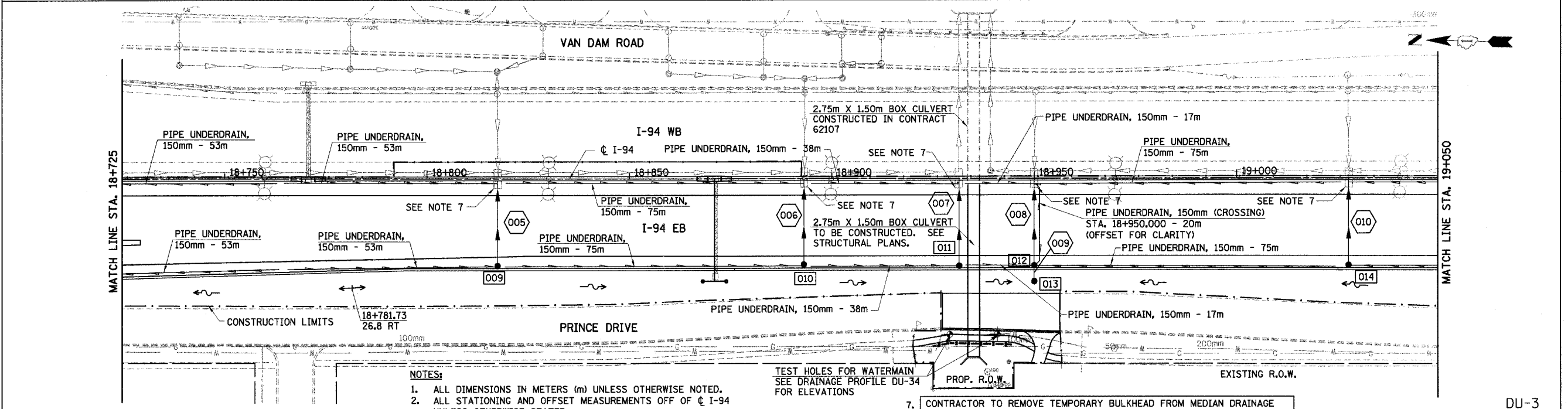
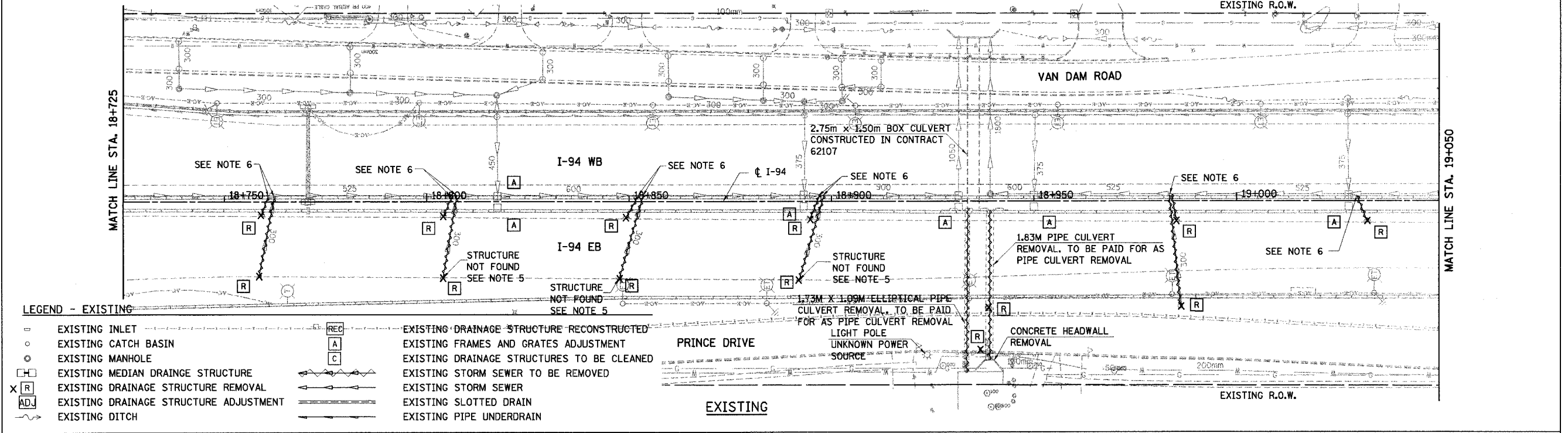


<b>REMOVING INLETS</b> 18+758.5, 18.6 RT 18+759.1, 3.3 RT 18+804.1, 3.6 RT 18+803.9, 19.0 RT 18+847.6, 19.2 RT 18+849.2, 4.0 RT	<b>REMOVING INLETS</b> 18+891.9, 19.7 RT 18+894.7, 4.3 RT 18+936.7, 36.8 RT 18+985.1, 4.9 RT 19+032.2, 5.0 RT	<b>REMOVING CATCH BASINS</b> 18+986.1, 25.9 RT <b>REMOVING MANHOLES</b> 18+938.7, 26.3 RT	<b>STORM SEWER REMOVAL - 300mm</b> STA. 18+758.53 TO 18+760.95 - 19.3m (15.5 cu m) STA. 18+759.11 TO 18+760.95 - 5.1m (4.1 cu m) STA. 18+803.92 TO 18+806.72 - 20.5m (16.5 cu m) STA. 18+804.05 TO 18+806.72 - 5.5m (4.5 cu m) STA. 18+847.59 TO 18+852.92 - 25.4m (20.4 cu m) STA. 18+849.23 TO 18+852.92 - 6.3m (5.1 cu m)	<b>STORM SEWER REMOVAL - 300mm</b> STA. 18+891.93 TO 18+897.21 - 21.6m (17.4 cu m) STA. 18+894.69 TO 18+897.21 - 5.8m (4.7 cu m) STA. 18+986.11 TO 18+983.58 - 27.7m (22.3 cu m) STA. 18+985.09 TO 18+983.58 - 6.7m (5.4 cu m) STA. 19+032.21 TO 19+028.72 - 6.8m (5.5 cu m)	<b>PIPE CULVERT REMOVAL</b> STA. 18+933.34 TO 18+933.64 - 40.3m STA. 18+939.05 TO 18+938.67 - 12.9m STA. 18+938.67 TO 18+939.07 - 24.2m	<b>FRAMES AND GRATES TO BE ADJUSTED</b> 18+817.32, C I-94 18+893.31, C I-94 18+931.35, C I-94 18+950.00, C I-94 19+027.35, C I-94
---	--	--	--	---	--	--

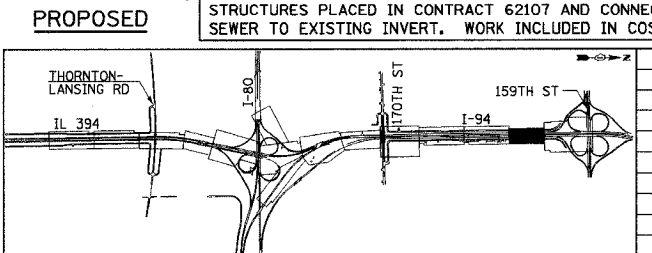
F.A.I. RTE 80/94	SECTION *	COUNTY COOK	TOTAL SHEETS 870	SHEET NO. 214
STA. 18+725		TO STA. 19+050		
FED. ROAD DIST. NO.		ILLINOIS		FED. AID PROJECT



- NOTES:**
- ALL DIMENSIONS IN METERS (m) UNLESS OTHERWISE NOTED.
  - ALL STATIONING AND OFFSET MEASUREMENTS OFF OF C I-94 UNLESS OTHERWISE STATED.
  - ALL PIPE SIZES IN MILLIMETERS (mm) UNLESS OTHERWISE NOTED.
  - QUANTITY OF TRENCH BACKFILL FOR STORM SEWER REMOVAL IS PROVIDED IN SCHEDULE AT TOP OF PLAN SHEET AFTER LENGTH OF PIPE TO BE REMOVED. TRENCH BACKFILL QUANTITY BASED ON LENGTH OF PIPE REMOVED. IF EXISTING STORM SEWER IS REMOVED AND REPLACED, TRENCH BACKFILL WILL BE PROVIDED FOR PROPOSED STORM SEWER ONLY.
  - REMOVAL ITEM ADDED FOR STRUCTURES NOT LOCATED.
  - CONTRACTOR TO REMOVE 300mm RISER SECTION FROM PRECAST TEE AND SEAL OPENING AT LOCATIONS WHERE 300mm RCP IS TEMPORARILY CONNECTED TO MAINLINE STORM SEWER. WORK IS INCLUDED IN COST OF STORM SEWER REMOVAL.

TEST HOLES FOR WATERMAIN SEE DRAINAGE PROFILE DU-34 FOR ELEVATIONS

7. CONTRACTOR TO REMOVE TEMPORARY BULKHEAD FROM MEDIAN DRAINAGE STRUCTURES PLACED IN CONTRACT 62107 AND CONNECT PROPOSED STORM SEWER TO EXISTING INVERT. WORK INCLUDED IN COST OF PROPOSED S.S.



REVISIONS	
NAME	DATE

DU-3  
ILLINOIS DEPARTMENT OF TRANSPORTATION  
I-94 EAST BOUND / IL 394 SOUTH BOUND  
**DRAINAGE AND UTILITIES**  
I-94  
STA. 18+725 TO STA. 19+050

HORIZ SCALE: 1:500  
VERT SCALE: NONE  
DATE: JULY 18, 2005

DRAWN BY: JPH  
CHECKED BY: MAM

**HNTB**