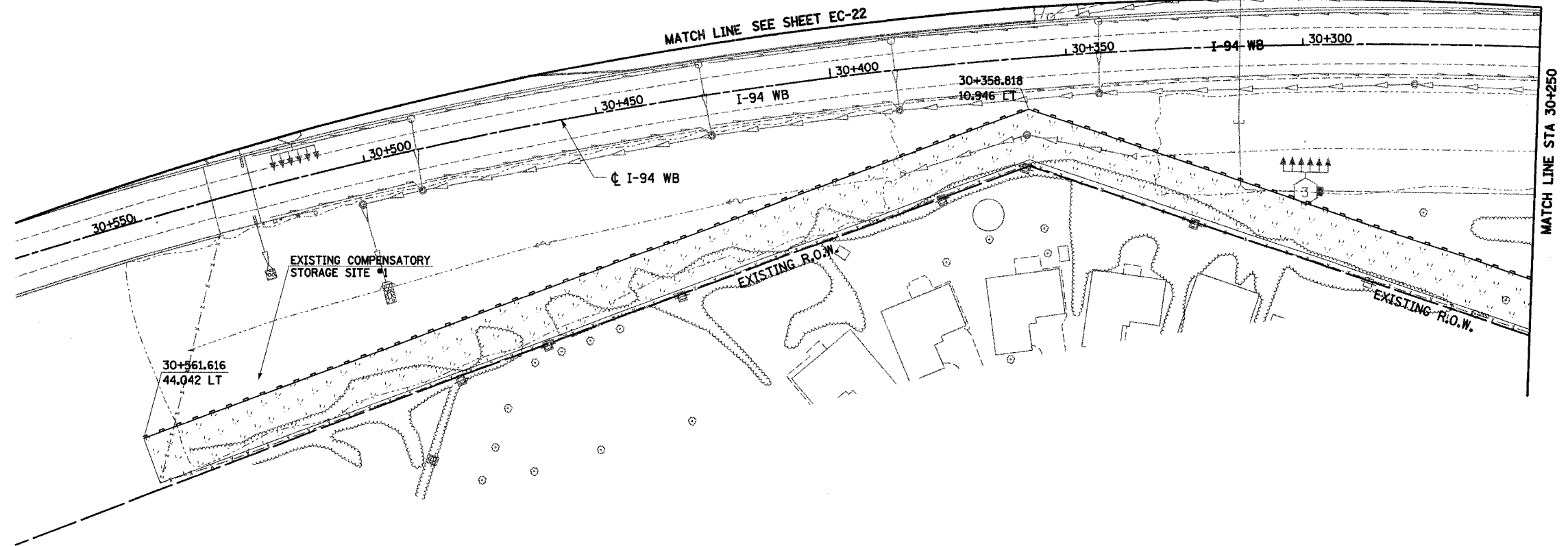


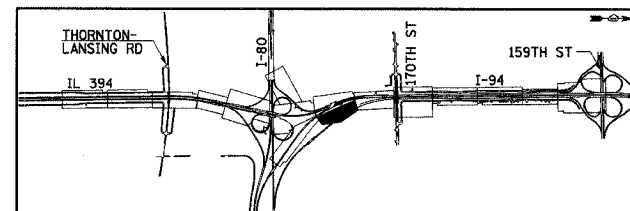
F.A.I. RTE	SECTION	COUNTY	TOTAL SHEETS	SHEET NO.
80/94	*	COOK	870	409
STA.		TO STA.		
FED ROAD DIST. NO.		ILLINOIS FED. AID PROJECT		



NOTES:

1. WORK THIS SHEET WITH THE EROSION AND SEDIMENT CONTROL GENERAL NOTES, LEGEND AND STRATEGY SHEETS.
2. ERODIBLE AREAS TO BE TEMPORARILY SEEDED DURING CONSTRUCTION AS REQUIRED BY THE EROSION AND SEDIMENT CONTROL GENERAL NOTES.
3. ALL STATIONING AND OFFSET MEASUREMENTS OFF ϕ I-94 WB UNLESS OTHERWISE NOTED.
4. ALL DIMENSIONS ARE IN METERS (m) UNLESS OTHERWISE NOTED.
5. TEMPORARY FENCE TO BE PLACED AT LOCATIONS ALONG ALL CONSTRUCTION LIMITS WHERE PERIMETER EROSION BARRIER IS NOT INDICATED (TEMPORARY FENCE NOT SHOWN AT THESE LOCATIONS FOR CLARITY).

DURING CONSTRUCTION



REVISIONS	
NAME	DATE

EC-28

ILLINOIS DEPARTMENT OF TRANSPORTATION
I-94 EAST BOUND / IL 394 SOUTH BOUND

EROSION CONTROL PLAN
I-94 WB
STA. 30+250 TO STA. 30+550

HORIZ SCALE: 1:500
VERT SCALE:
DATE: JULY 18, 2005

DRAWN BY: JPH
CHECKED BY: JES

HNTB