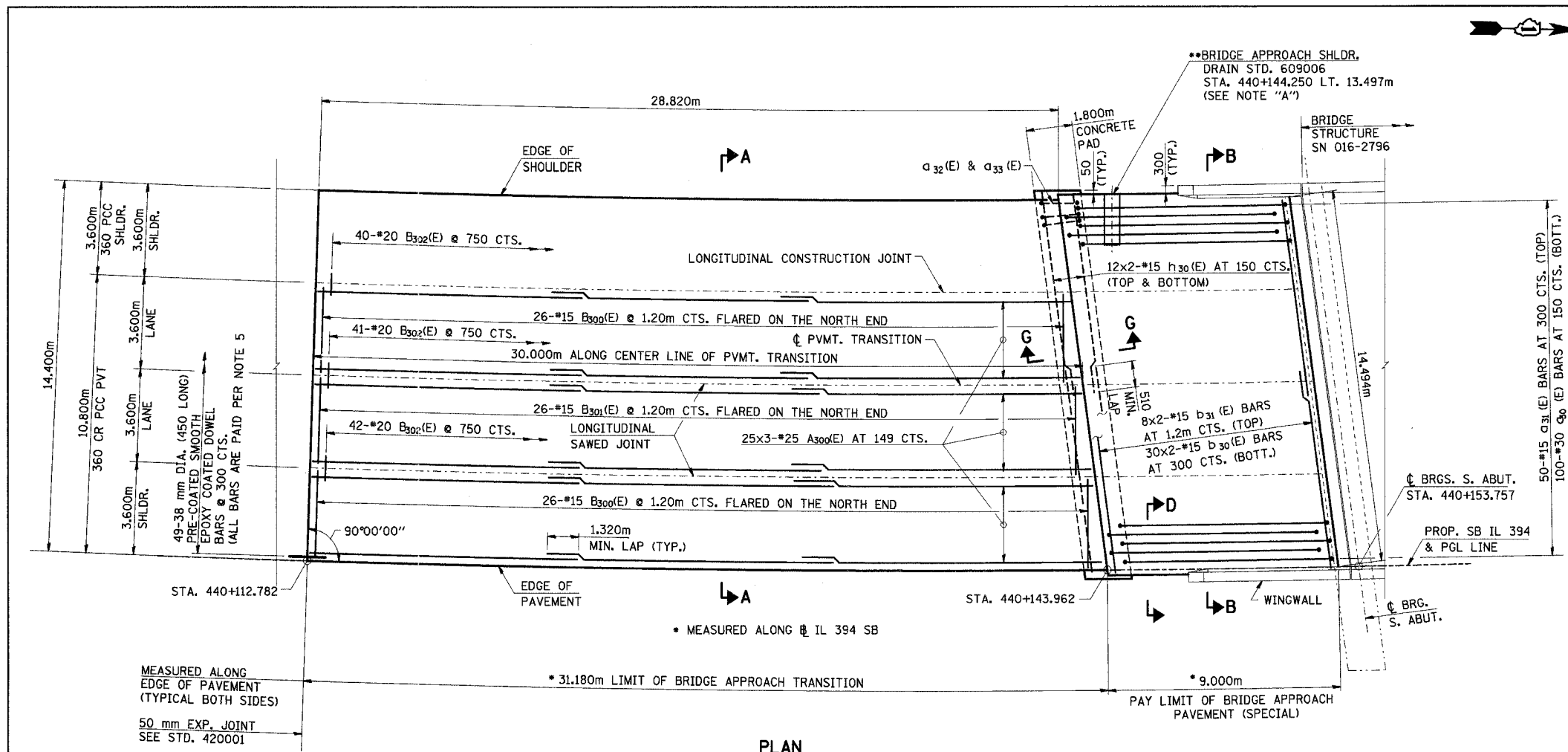


FAI RTE	SECTION	COUNTY	TOTAL SHEETS NO.	SHEET NO.
80/94		COOK	870	472
STA.		TO STA.		
FED ROAD DIST. NO.		ILLINOIS FED. AID PROJECT		



**PLAN**

**BILL OF MATERIAL BRIDGE APPROACH PAVEMENT (SPECIAL)**

BAR NO.	SIZE	LENGTH (M)	SHAPE	
a <sub>30</sub> (E)	100	*30	8.93	U
a <sub>31</sub> (E)	50	*15	8.90	U
a <sub>32</sub> (E)	51	*15	2.06	U
a <sub>33</sub> (E)	51	*15	1.70	U
b <sub>30</sub> (E)	60	*15	7.75	U
b <sub>31</sub> (E)	16	*15	7.75	U
h <sub>30</sub> (E)	48	*15	7.71	U
ITEM	UNIT	QUANTITY		
BRIDGE APPROACH PAVEMENT (SPECIAL)	M <sup>2</sup>	133		
REINFORCEMENT BARS, EPOXY COATED <sup>(1)</sup>	KG	7413		

<sup>(1)</sup> INCLUDED FOR PAYMENT UNDER "BRIDGE APPROACH PAVEMENT (SPECIAL)"

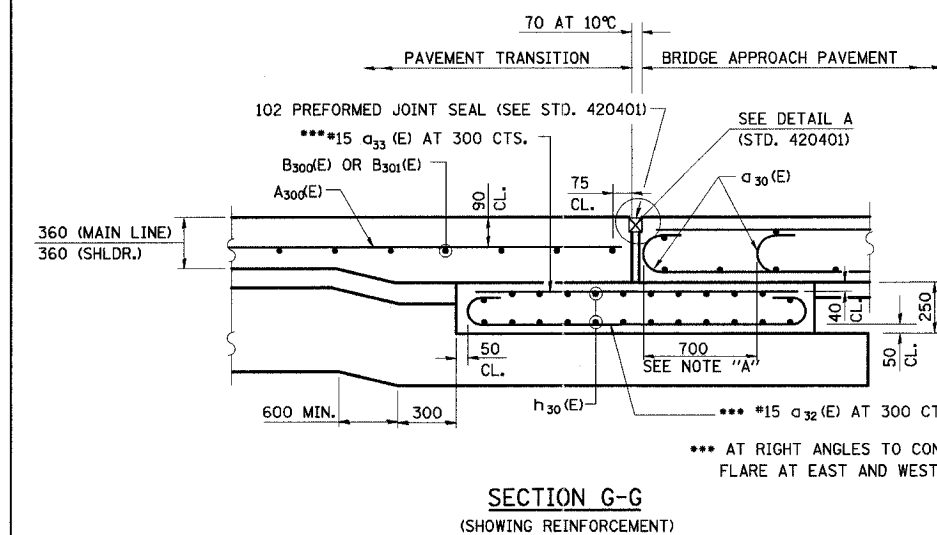
**BILL OF MATERIAL PAVEMENT TRANSITION**

BAR NO.	SIZE	LENGTH (M)	SHAPE	
A <sub>300</sub> (E)	225	*25	11.25	U
B <sub>300</sub> (E)	52	*15	3.53	U
B <sub>301</sub> (E)	26	*15	3.55	U
B <sub>302</sub> (E)	123	*20	0.75	U
ITEM	UNIT	QUANTITY		
REINFORCEMENT BARS, EPOXY COATED <sup>(2)</sup>	KG	10586		

<sup>(2)</sup> INCLUDED FOR PAYMENT UNDER THE CORRESPONDING PAY ITEM (SEE NOTE 5)

**NOTES:**

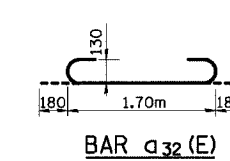
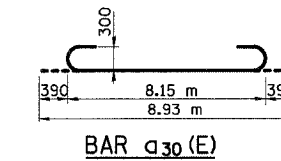
- WORK THIS SHEET WITH BRIDGE APPROACH PAVEMENT STANDARD 420401 AND PAVEMENT JOINTS STD. 420001.
- BARS INDICATED THUS "12x2-#15 ETC. INDICATE 12 LINES OF BARS WITH 2 LENGTHS PER LINE.
- REINFORCEMENT BARS DESIGNATED "(E)" SHALL BE EPOXY COATED.
- FOR THE 9 m. APPROACH PAVEMENT AND SUPPORTING PAD, ALL WORK AND MATERIALS ARE INCLUDED FOR PAYMENT UNDER "BRIDGE APPROACH PAVEMENT (SPECIAL)".
- FOR THE BRIDGE APPROACH PAVEMENT TRANSITION, ALL WORK AND MATERIALS ARE INCLUDED FOR PAYMENT UNDER "CONTINUOUSLY REINFORCED PORTLAND CEMENT CONCRETE PAVEMENT-360MM" AND "PCC SHOULDERS-360MM".
- ALL DIMENSIONS ARE IN MILLIMETERS (mm) EXCEPT AS NOTED.
- TRANSVERSE BARS SHALL BE SET WITH 50 mm CLEARANCE TO EDGE OF PAVEMENT AND 25 mm FROM  $\phi$  SAWED LONGITUDINAL JOINT.
- PLACE B<sub>302</sub>(E) AT MID-DEPTH OF SLAB.
- FOR SECTIONS A-A AND D-D SEE SHEET NO. 473 OF 870.



NOTE "A"  
STAGGER a<sub>30</sub>(E) BARS AS SHOWN ON PLAN-FULL WIDTH

FOR DETAILS NOT SHOWN, SEE "SECTION C-C AND G-G- RIGID PAVEMENT", STANDARD 420401

\*\*\* AT RIGHT ANGLES TO CONCRETE PAD; FLARE AT EAST AND WEST END



REVISIONS	
NAME	DATE

ILLINOIS DEPARTMENT OF TRANSPORTATION  
I-94 EAST BOUND / IL 394 SOUTH BOUND  
**BRIDGE APPROACH PAVEMENT (SPECIAL) & PAVEMENT TRANSITION**  
SB IL RTE 394 OVER INTERSTATE 80  
STRUCTURE NO. 2796  
SOUTH APPROACH - 1 OF 2

HORIZ SCALE:  
VERT SCALE:  
DATE: JUL 18, 2005  
DRAWN BY: LK  
CHECKED BY: PY

**HNTB**