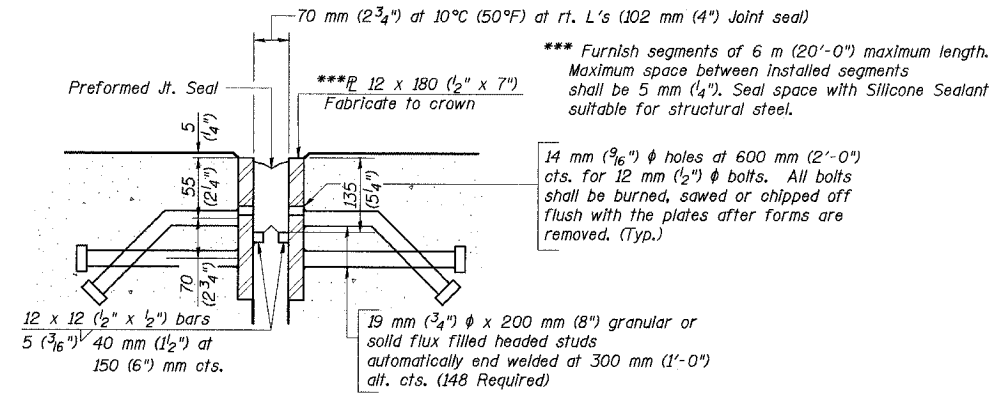
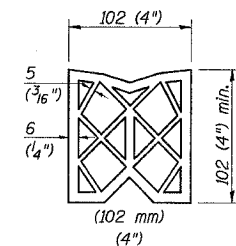


STATE OF ILLINOIS  
DEPARTMENT OF TRANSPORTATION

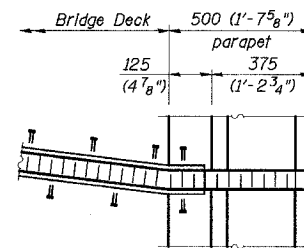
ROUTE NO.	SECTION	COUNTY	TOTAL SHEETS	SHEET NO.	SHEET NO. 33 91 SHEETS
F. A. I. 80/94	*	COOK	870	547	
FED. ROAD DIST. NO. 1	ILLINOIS	FED. AID PROJECT-	CONTRACT NO. 62108		
(0203.1 & 0312-708W) R-3					



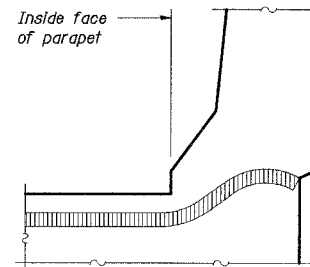
SECTION THRU EXPANSION JOINT



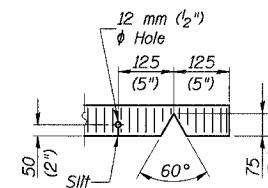
PREFORMED JOINT SEAL



PLAN AT PARAPET



TYPICAL END TREATMENT AT PARAPET  
(Showing seal)



SEAL CUT-OUT

BILL OF MATERIAL

Item	Unit	Total
Bridge Expansion Joint Closure	meter	10.7
Preformed Joint Seal 4"		

ILLINOIS DEPARTMENT OF TRANSPORTATION  
I-94 EAST BOUND / IL 394 SOUTH BOUND

EXPANSION JOINT AT ABUTMENT F

SB IL ROUTE 394 / RAMP F OVER THORN CREEK  
F.A.P. 332 SECTION (0203.1 & 0312-708W) R-3  
COOK COUNTY  
STA. 440+704.350 STRUCTURE NO. 016-2800/2845

DATE JUL 18, 2005

SCALE ---

**HNTB**

L:\skate\13-34562\ACAD\DWG\SM\_2800\cds\CTR\_13\_2800\14s\_2800.dgn  
13-AUG-2005 12:41

DESIGNED	PCA
CHECKED	TRL
DRAWN	LK
CHECKED	TRL