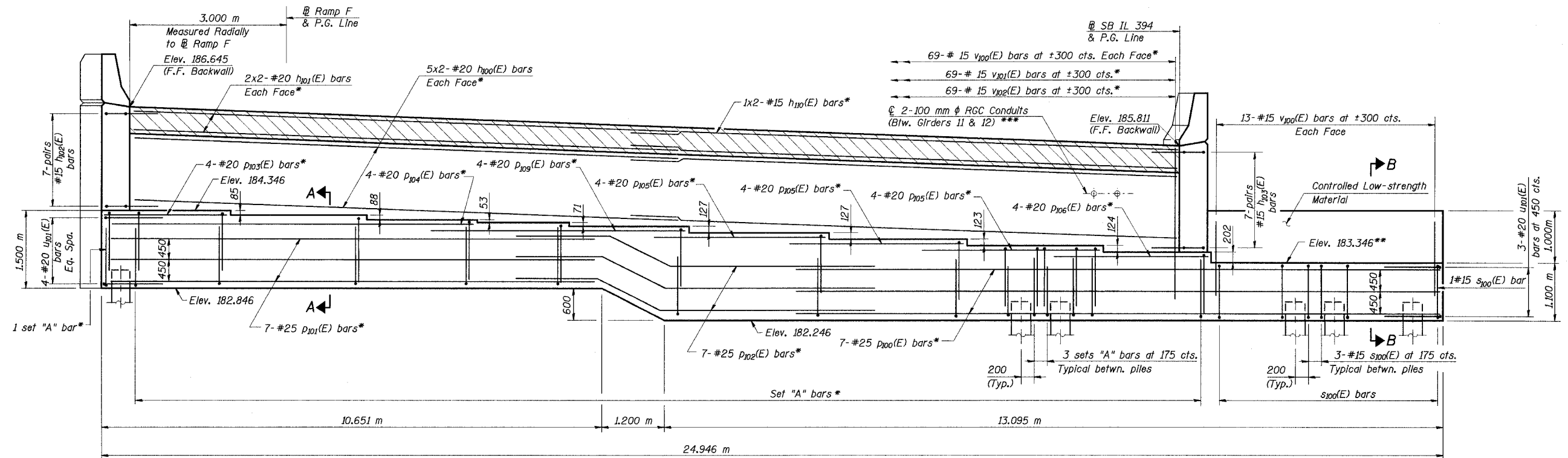


STATE OF ILLINOIS  
DEPARTMENT OF TRANSPORTATION

ROUTE NO. F. A. I. 80/94	SECTION •	COUNTY COOK	TOTAL SHEETS 870	SHEET NO. 579	SHEET NO. 65 91 SHEETS
FED. ROAD DIST. NO. 1		ILLINOIS FED. AID PROJECT-	CONTRACT NO. 62108		
(0203.1 & 0312-708) R-3					



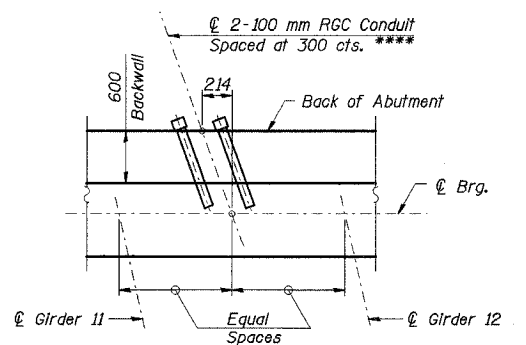
Bar Set "A" - 2-#15 u100(E) bars

**ELEVATION**  
(Looking North)

- \* See section thru Abutment on Sht. 66 for reinforcement placement details
- \*\* Bearing Elevation for Future girders
- \*\*\* General Contractor to coordinate with Electrical Contractor for location of embedded conduits. Paid under electrical work but installed by Bridge Contractor. Installation included for payment under Concrete Structures.

**BEARING SEAT ELEVATION**

Girder No.	Elevation [m]
1	184.346
2	184.261
4	184.173
6	184.120
7	184.049
8	183.922
10	183.795
11	183.672
12	183.548



**DETAIL 1**

General Contractor to coordinate with the Electrical Contractor before embedding the conduits.

\*\*\*\* Embedded in Backwall

**Notes:**

1. Work this Sheet with Sheet No. 64, 66, & 67 of 91.
2. Reinforcement bars designated (E) shall be epoxy coated.
3. All dimensions are in millimeters except as noted.
4. For placement of dowel bars see Sheet 66 of 91.
5. All piles shall be enclosed in concrete. See detail of Sheet No. 67 of 91.
6. Min bar laps (Unless otherwise shown):  
#15 bars - 710  
#20 bars - 890  
#25 bars - 1480

DESIGNED	MEA
CHECKED	TRL
DRAWN	LK
CHECKED	MEA

J:\Beauchamp\JA\34562\CA00\BA\SN\_2880\cde\CTR\_19\_2880\cde\190944\c\_2880.dgn  
28-SEP-2005 13:50

ILLINOIS DEPARTMENT OF TRANSPORTATION  
I-94 EAST BOUND / IL 394 SOUTH BOUND  
**NORTH ABUTMENT ELEVATION**  
SB IL ROUTE 394 OVER THORN CREEK  
F.A.P. 332 SECTION (0203.1 & 0312-708) R-3  
COOK COUNTY  
STA. 440+704.350 STRUCTURE NO. 016-2800  
DATE JUL 18, 2005  
SCALE ---  
**HNTB**