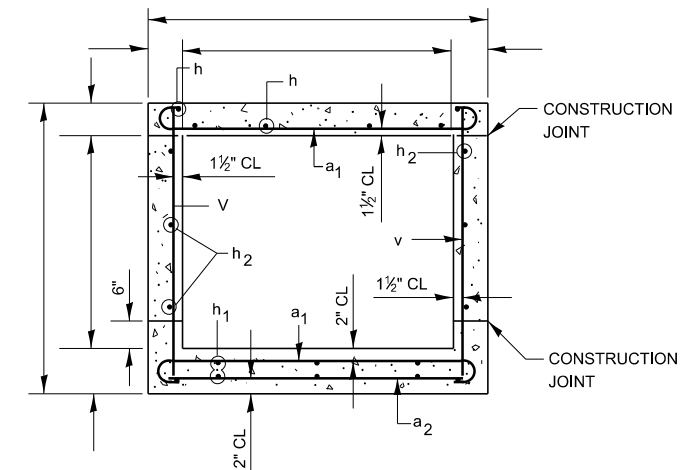


HALF LONG SECTION

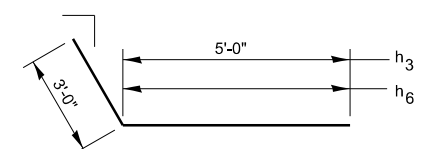
HALF ELEVATION



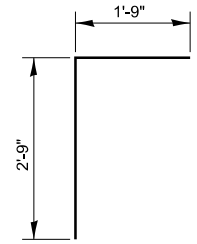
SECTION THRU BARREL



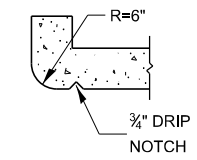
BAR a1



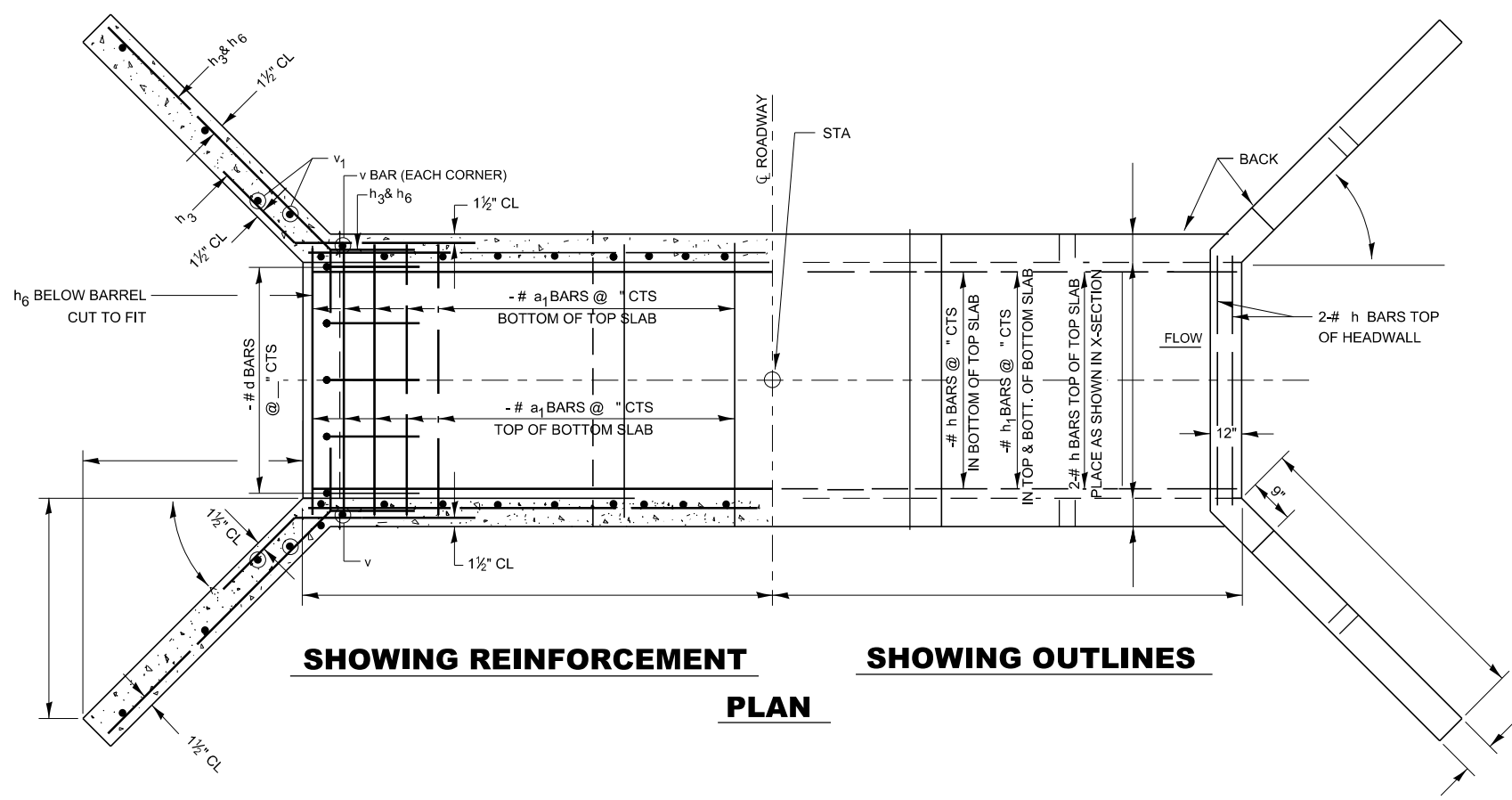
BARS h3 & h6



BAR d



SECTION THRU HEADWALL
(UP STREAM END ONLY)



SHOWING REINFORCEMENT

SHOWING OUTLINES

PLAN

BILL OF MATERIALS

BAR	NUMBER	SIZE	LENGTH
a1			
a2			
a3			
d			
h			
h1			
h2			
h3			
h4			
h6			
v			
v1			
v2			
CONC BOX CULV		CU YD	
REINFORCEMENT BARS		LBS	

GENERAL NOTES

CLASS SI CONCRETE SHALL BE USED THROUGHOUT.
 AT LEAST SIX FEET OF BARREL SHALL BE POURED MONLITHICALLY WITH WINGWALLS.
 EXPOSED EDGES SHALL BE BEVELED 3/4".
 FOR BACKFILLING AND EMBANKMENTS SEE STANDARD SPECIFICATIONS.
 TILT HOOK OF a1 BARS, IF NECESSARY, TO OBTAIN 1 1/2" MINIMUM CLEARANCE AT TOP OF HOOK.

DESIGN STRESSES

fy = 60,000 PSI
 fc = 3,500 PSI

LOADING HS 20-44 & ALT.

MODEL det 3 dets1b
 FILE Name: p:\projects\paw_bentley.com\p\DOT\Documents\DOT Office\Drawings\Detail\Revisions\2023\500-599 STRUCTURES.dgn
 PROJECT: 500-599 STRUCTURES.dgn
 DATE: 9/27/23

USER NAME = Anthony.Grunstad	DESIGNED -	REVISED -
PLOT SCALE = 100,000 ' / in.	DRAWN -	REVISED -
PLOT DATE = 9/27/23	CHECKED -	REVISED -
	DATE -	REVISED -

STATE OF ILLINOIS
DEPARTMENT OF TRANSPORTATION

BOX CULVERT STATION

SCALE: SHEET OF SHEETS STA. TO STA.

F.A. RTE.	SECTION	COUNTY	TOTAL SHEETS	SHEET NO.
CONTRACT NO.				
ILLINOIS FED. AID PROJECT				