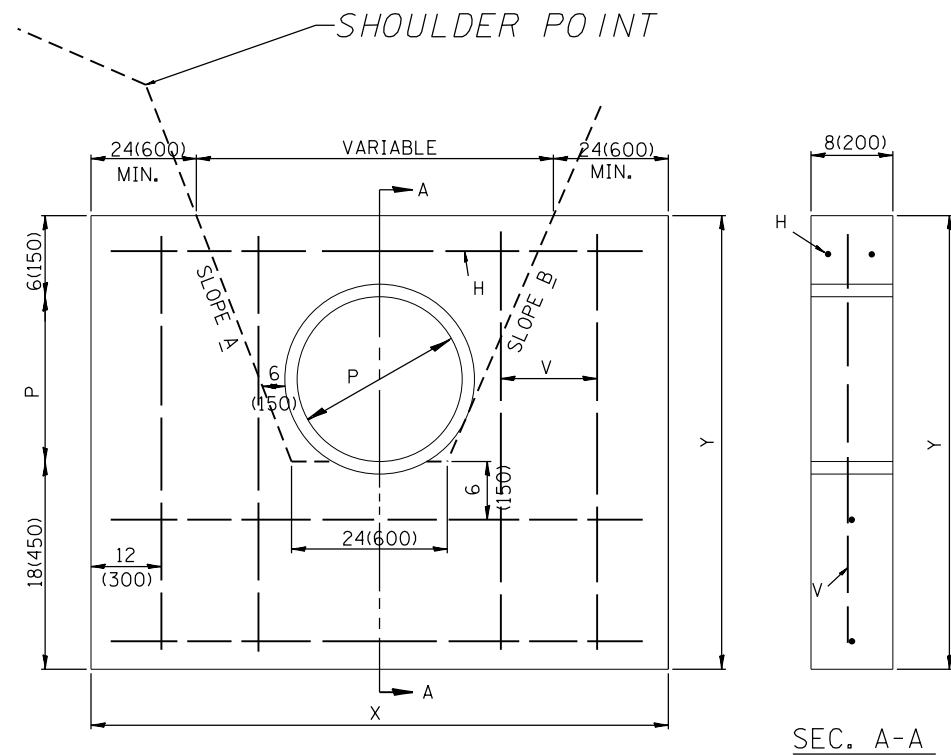


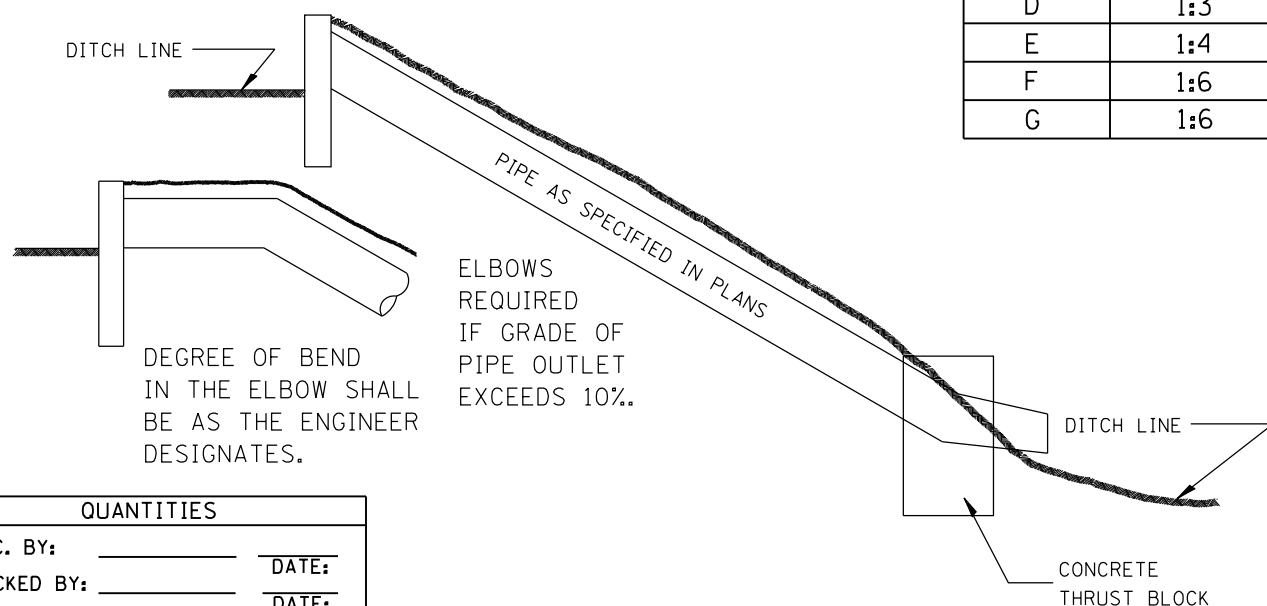
DESIGNER NOTES:
1. INCLUDE DISTRICT CADD STANDARDS FOR CONCRETE THRUST BLOCKS AND PIPE ELBOW.



General Notes

1. PAY FOR CAST IN PLACE CONCRETE WALL AS CLASS SI CONCRETE (MISC.) AT THE CONTRACT UNIT PRICE PER CUBIC YARD.
2. ALL REINFORCING BARS ARE #4 (#15), TO BE PAID FOR AT THE CONTRACT UNIT PRICE PER POUND AS REINFORCEMENT BARS.
3. LENGTH, SIZE AND TYPE OF PIPE AS SHOWN ON PLANS
4. TOP OF WALL TO BE BELOW ELEVATION OF SHOULDERS

DESIGN	SLOPE A	SLOPE B
A	1:2	1:2
B	1:3	1:2
C	1:4	1:2
D	1:3	1:3
E	1:4	1:3
F	1:6	1:4
G	1:6	1:3



DESIGN	P	X	Y	CONCRETE		REINFORCING BARS		
				CU. YDS	(m ³)	lb (kg)	H	V
12-A	12(300)	12'-0''(3.66m)	36(914)	0.9(0.69)		37(17)	11'-6''(3.51m)	30(762)
12-B	12(300)	13'-0''(3.96m)	36(914)	1.0(0.76)		41(19)	13'-0''(3.96m)	30(762)
12-C	12(300)	15'-0''(4.57m)	36(914)	1.1(0.84)		45(20)	14'-6''(4.42m)	30(762)
12-D	12(300)	15'-0''(4.57m)	36(914)	1.1(0.84)		45(20)	14'-6''(4.42m)	30(762)
12-E	12(300)	16'-6''(5.03m)	36(914)	1.2(0.92)		49(22)	16'-0''(4.88m)	30(762)
15-A	15(375)	13'-0''(3.96m)	39(991)	0.9(0.69)		41(19)	12'-6''(3.81m)	33(838)
15-B	15(375)	14'-9''(4.50m)	39(991)	1.2(0.92)		45(20)	14'-3''(4.34m)	33(838)
15-C	15(375)	16'-6''(5.03m)	39(991)	1.3(0.99)		50(23)	16'-0''(4.88m)	33(838)
15-D	15(375)	16'-6''(5.03m)	39(991)	1.3(0.99)		50(23)	16'-0''(4.88m)	33(838)
15-E	15(375)	18'-3''(5.56m)	39(991)	1.4(1.07)		55(25)	17'-9''(5.41m)	33(838)
15-F	15(375)	23'-0''(7.16m)	39(991)	1.9(1.45)		69(31)	23'-0''(7.01m)	33(838)
15-G	15(375)	21'-9''(6.63m)	39(991)	1.7(1.30)		64(29)	21'-3''(6.48m)	33(838)
18-A	18(450)	14'-4''(4.37m)	3'-6''(1.07m)	1.2(0.92)		44(20)	13'-6''(4.11m)	36(914)
18-B	18(450)	16'-0''(4.88m)	3'-6''(1.07m)	1.3(0.99)		49(22)	15'-6''(4.72m)	36(914)
18-C	18(450)	18'-0''(5.49m)	3'-6''(1.07m)	1.5(1.15)		55(25)	17'-6''(5.33m)	36(914)
18-D	18(450)	18'-0''(5.49m)	3'-6''(1.07m)	1.5(1.15)		55(25)	17'-6''(5.33m)	36(914)
18-E	18(450)	20'-0''(6.10m)	3'-6''(1.07m)	1.7(1.30)		60(27)	19'-6''(5.94m)	36(914)
18-F	18(450)	26'-0''(7.92m)	3'-6''(1.07m)	2.2(1.68)		76(34)	25'-6''(7.77m)	36(914)
18-G	18(450)	24'-0''(7.32m)	3'-6''(1.07m)	2.0(1.53)		71(32)	23'-6''(7.16m)	36(914)
24-A	24(600)	16'-0''(4.88m)	4'-0''(1.22m)	1.5(1.15)		51(23)	15'-6''(4.72m)	3'-6''(1.07m)
24-B	24(600)	18'-6''(5.64m)	4'-0''(1.22m)	1.7(1.30)		57(26)	18'-0''(5.49m)	3'-6''(1.07m)
24-C	24(600)	21'-0''(6.40m)	4'-0''(1.22m)	2.0(1.53)		64(29)	20'-6''(6.25m)	3'-6''(1.07m)
24-D	24(600)	21'-0''(6.40m)	4'-0''(1.22m)	2.0(1.53)		64(29)	20'-6''(6.25m)	3'-6''(1.07m)
24-E	24(600)	23'-6''(7.16m)	4'-0''(1.22m)	2.2(1.68)		71(32)	23'-0''(7.01m)	3'-6''(1.07m)
30-A	30(750)	18'-0''(5.49m)	4'-6''(1.37m)	1.9(1.45)		57(26)	17'-6''(5.33m)	4'-0''(1.22m)
30-B	30(750)	21'-0''(6.40m)	4'-6''(1.37m)	2.0(1.53)		65(29)	20'-6''(6.25m)	4'-0''(1.22m)
30-C	30(750)	24'-0''(7.32m)	4'-6''(1.37m)	2.6(1.99)		73(33)	23'-6''(7.16m)	4'-0''(1.22m)
30-D	30(750)	24'-0''(7.32m)	4'-6''(1.37m)	2.6(1.99)		73(33)	23'-6''(7.16m)	4'-0''(1.22m)
30-E	30(750)	27'-0''(8.33m)	4'-6''(1.37m)	2.9(2.22)		81(37)	26'-6''(8.08m)	4'-0''(1.22m)

QUANTITIES

CALC. BY: _____ DATE: _____

CHECKED BY: _____ DATE: _____

QUANTITY CALCULATIONS ARE ON FILE AT THE DISTRICT 4 OFFICE; BUREAU OF PROJECT IMPLEMENTATION; DOCUMENTATION SECTION

01-01-97	RENUM. J-10.01, METRICS, NEW REVISION BOX.	T.P.
	ADDED QUANTITY CALCULATION BOX, REVISED NOTES	
10-16-06	REV. TO 2007 SPEC., REINF. BARS COL.	M.A.
7-15-15	REVISED NOTES ABOUT PAY ITEMS	R.D.

STATE OF ILLINOIS
DEPARTMENT OF TRANSPORTATION

CONCRETE DITCH CHECK

NOT TO SCALE

CADD STD. 503001-D4

All slope ratios are expressed as units of vertical displacement to units of horizontal displacement (V:H).

All dimensions are in inches (millimeters) unless otherwise noted.

F.A. RTE.	SECTION	COUNTY	TOTAL SHEETS	SHEET NO.
CONTRACT NO.				
FED. ROAD DIST. NO. ILLINOIS FED. AID PROJECT				