

APPENDIX G

Wetland Impact Table

TABLE G-1
Potential Wetland Impacts Associated with Alternatives 203 and 402

Wetland ID	Wetland Type ^a	Jurisdictional Status ^{b,c}	Watershed	Impact (ac) ^d		Size ^{d,e} (ac)	% Impact	
				Alt 203	Alt 402		Alt 203	Alt 402
WL1.2	vegetated drainage ditch/channel	USACE jurisdictional	Willow Creek	0	--	0.1	21.4	--
WL3.1	vegetated drainage ditch/channel	USACE jurisdictional	Willow Creek	0.1	0.1	5.4	1.8	1.8
WL3.3	emergent	Isolated	Willow Creek	0	0	0	100	100
WL3.4	emergent	Isolated	Willow Creek	0.5	0.5	0.6	90.9	90.9
WL3.5	wooded wetland	Isolated	Willow Creek	0.1	0.1	0.2	23.8	23.8
WL4.1	vegetated drainage ditch/channel	USACE jurisdictional	Willow Creek	1.1	0.1	1.4	78.3	5.6
WL10.3	emergent	USACE jurisdictional	Salt Creek	2.8	2.8	67.2	4.1	4.1
WL10.4	wet old field	Isolated	Salt Creek	0.1	0.1	0.1	100	100
WL10.5	scrub-shrub	Isolated	Salt Creek	0.5	0.5	0.5	100	100
WL10.6	emergent	Isolated	Salt Creek	0.5	0.5	0.6	87.2	87.2
WL10.8	scrub-shrub	Isolated	Salt Creek	1.3	1.3	1.3	100	100
WL10A	emergent	USACE jurisdictional	Willow Creek	1.1	--	4.5	25.2	--
WL11.2	emergent	Isolated	Salt Creek	0.4	0.4	0.4	100	100
WL12.8	emergent	isolated	Salt Creek	0.1	0.1	0.1	100	100
WL12.9	emergent	USACE jurisdictional	Salt Creek	0.4	0.4	0.4	100	100
WL12.10	emergent	USACE jurisdictional	Salt Creek	2.0	2.0	2.0	100	100
WL14.1	wet old field	isolated	Salt Creek	0	0	0	100	100

TABLE G-1
Potential Wetland Impacts Associated with Alternatives 203 and 402

Wetland ID	Wetland Type ^a	Jurisdictional Status ^{b,c}	Watershed	Impact (ac) ^d		Size ^{d,e} (ac)	% Impact	
				Alt 203	Alt 402		Alt 203	Alt 402
WL14.2	wet old field	isolated	Salt Creek	0.1	0.1	0.1	100	100
WL14.4	wet old field	USACE jurisdictional	Salt Creek	0.8	0.8	0.8	100	100
WL15.1	wet old field	USACE jurisdictional	Salt Creek	3.6	3.6	259.1	1.4	1.4
WL16.1	wooded wetland	isolated	Willow Creek	0.1	0.1	0.1	100	100
WL16.3	wet old field	isolated	Willow Creek	0.2	0.2	0.2	100	100
WL16.4	wet old field	isolated	Willow Creek	0.4	0.4	0.4	100	100
WL16.5	emergent	isolated	Willow Creek	0	0	0	100	100
WL16.6	scrub-shrub	isolated	Willow Creek	0.1	0.1	0.1	100	100
WL16.7	scrub-shrub	isolated	Willow Creek	0.3	0.3	0.3	100	100
WL16.8	emergent	isolated	Willow Creek	0.5	0.5	0.5	100	100
WL16A	wet old field	isolated	Willow Creek	0	--	1.5	0.1	--
WL17.1	vegetated drainage ditch/channel	USACE jurisdictional	Willow Creek	0.5	0.5	1.4	35.8	35.8
WL17.7	wet old field	isolated	Willow Creek	0	0	0	100	100
WL17.8	vegetated drainage ditch/channel	isolated	Willow Creek	0.1	0.1	0.1	100	100
WL18.1	OMP	isolated	Willow Creek	0.4	--	0.4	100	--
WL18.2	emergent	USACE jurisdictional	Willow Creek	0.5	0.5	0.5	98.0	98.0
WL18.3	wet old field	isolated	Willow Creek	0.2	0.2	0.2	100	100
WL18.4	emergent	USACE jurisdictional	Willow Creek	5.0	5.0	5.0	99.8	99.8
WL18.5	emergent	isolated	Willow Creek	0.7	0.7	0.7	100	100
WL18.6	vegetated drainage ditch/channel	USACE jurisdictional	Willow Creek	0.3	0.3	1.1	22.9	22.9
WL20.1	wooded wetland	isolated	Willow Creek	1.9	1.9	2.6	74.2	74.2
WL20.2	wooded wetland	isolated	Willow Creek	0	0	0	100	100

TABLE G-1
 Potential Wetland Impacts Associated with Alternatives 203 and 402

Wetland ID	Wetland Type ^a	Jurisdictional Status ^{b,c}	Watershed	Impact (ac) ^d		Size ^{d,e} (ac)	% Impact	
				Alt 203	Alt 402		Alt 203	Alt 402
WL20.9	OMP	USACE jurisdictional	Des Plaines River	0	0	0.10	2.8	2.8
WL22.5	OMP	USACE jurisdictional	Des Plaines River	0	0	0.1	33.3	33.3
WL38A	wet old field	isolated	Salt Creek	0	0	0	1.2	1.2
WL40.1	vegetated drainage ditch/channel	USACE jurisdictional	Salt Creek	0.3	0.3	0.4	85.7	85.7
WL40.2	vegetated drainage ditch/channel	USACE jurisdictional	Salt Creek	0.1	0.1	0.1	100	100
WL42.1	scrub-shrub	isolated	Salt Creek	0.1	0.1	0.8	9.5	9.5
WL42.2	wooded wetland	USACE jurisdictional	Salt Creek	0	0	0.5	8.5	8.5
WL42.4	emergent	USACE jurisdictional	Salt Creek	0.3	0.3	1.2	27.6	27.6
WL42.6	emergent	isolated	Salt Creek	0	0	0	6.9	6.9
WL43.1	wooded wetland	isolated	Salt Creek	0.2	0.2	0.4	39.5	39.5
WL43.2	emergent	isolated	Salt Creek	0.2	0.2	3.7	4.6	4.6
WL45.2	emergent	USACE jurisdictional	Salt Creek	0	0	2.2	0	0
WL45.5	emergent	isolated	Salt Creek	0.1	0.1	2.3	4.7	4.7
WL45.6	emergent	isolated	Salt Creek	0.1	0.1	0.1	100	100
WL45.9	scrub-shrub	USACE jurisdictional	Salt Creek	0.1	0.1	0.5	10.9	10.9
WL45.10	wet old field	Isolated	Salt Creek	0.4	0.4	0.4	100	100
WL45.11	vegetated drainage ditch/channel	USACE jurisdictional	Salt Creek	0	0	0.4	5.6	5.6
WL46.2	scrub-shrub	isolated	West Branch DuPage River	0	0	0	50.0	50.0
WL46.5	emergent	isolated	Salt Creek	0.1	0.1	4.7	1.3	1.3

TABLE G-1
Potential Wetland Impacts Associated with Alternatives 203 and 402

Wetland ID	Wetland Type ^a	Jurisdictional Status ^{b,c}	Watershed	Impact (ac) ^d		Size ^{d,e} (ac)	% Impact	
				Alt 203	Alt 402		Alt 203	Alt 402
WL46.7	emergent	isolated	West Branch DuPage River	0	0	0	100	100
WL46.8	emergent	isolated	Salt Creek	0.2	0.2	0.2	100	100
WL50.1	emergent	isolated	West Branch DuPage River	0.5	0.5	8.9	5.2	5.2
EOM1	mitigation site	USACE jurisdictional	Salt Creek	0	0	5.8	0	0
EOM3	mitigation site	USACE jurisdictional	West Branch DuPage River	0.1	0.1	1.4	6.6	6.6
EOM4	mitigation site	USACE jurisdictional	West Branch DuPage River	0	0	3.2	0.9	0.9
M9	mitigation site	USACE jurisdictional	Salt Creek	0.2	0.2	18.2	0.8	0.8
WLB12.3	wetland basin	exempt	Salt Creek	2.4	2.4	2.4	100	100
WLB12.4	wetland basin	exempt	Salt Creek	1.5	1.5	1.5	100	100
WLB12.5	wetland basin	exempt	Salt Creek	0.3	0.3	0.3	100	100
WLB12.6	wetland basin	exempt	Salt Creek	1.7	1.7	4.7	35.0	35.0
WLB15.2	wetland basin	exempt	Salt Creek	1.6	1.6	1.9	87.1	87.1
WLB16.1	wetland basin	exempt	Willow Creek	0.1	0.1	0.1	100	100
WLB16.3	wetland basin	exempt	Willow Creek	0	0	0	100	100
WLB17.1	wetland basin	exempt	Willow Creek	0.1	0.1	0.1	100	100
WLB17.2	wetland basin	exempt	Willow Creek	0.2	0.2	0.2	100	100
WLB17.3	wetland basin	exempt	Willow Creek	0.4	0.4	0.4	100	100
WLB23A	wetland basin	exempt	Willow Creek	0.7	0.7	0.7	100	100
WLB33A	wetland basin	exempt	Salt Creek	0	0	1.4	2.8	2.8

TABLE G-1
 Potential Wetland Impacts Associated with Alternatives 203 and 402

Wetland ID	Wetland Type ^a	Jurisdictional Status ^{b,c}	Watershed	Impact (ac) ^d		Size ^{d,e} (ac)	% Impact	
				Alt 203	Alt 402		Alt 203	Alt 402
WLB46.1	wetland basin	exempt	Salt Creek	0	0	0	100	100
WLB46.2	wetland basin	exempt	Salt Creek	0.1	0.1	0.1	100	100
Total				38.7	36.1			

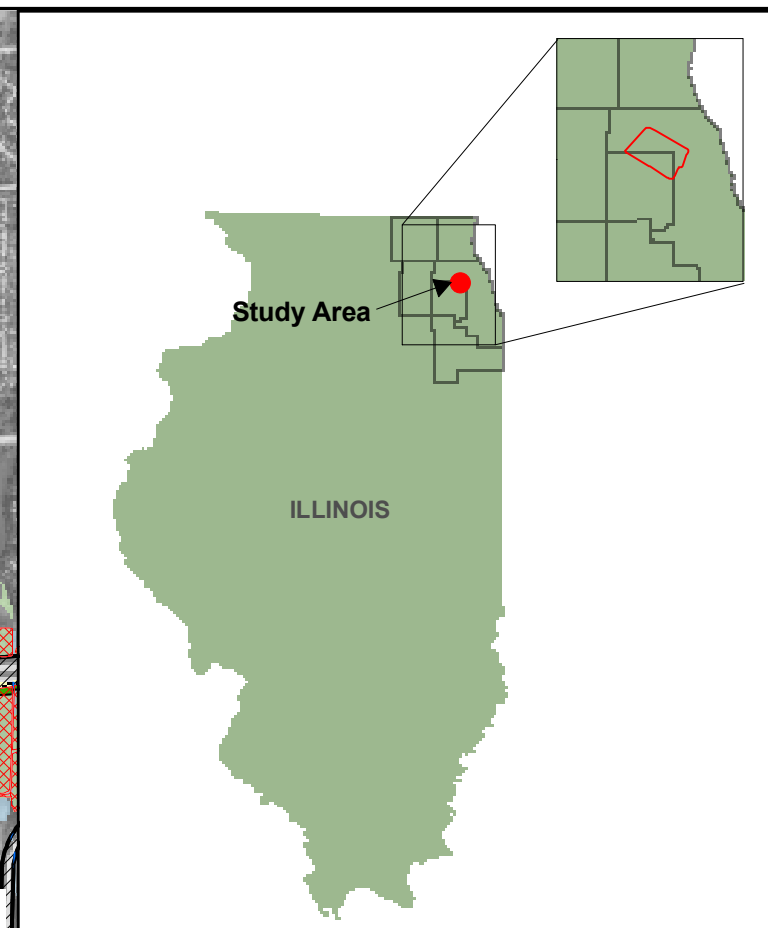
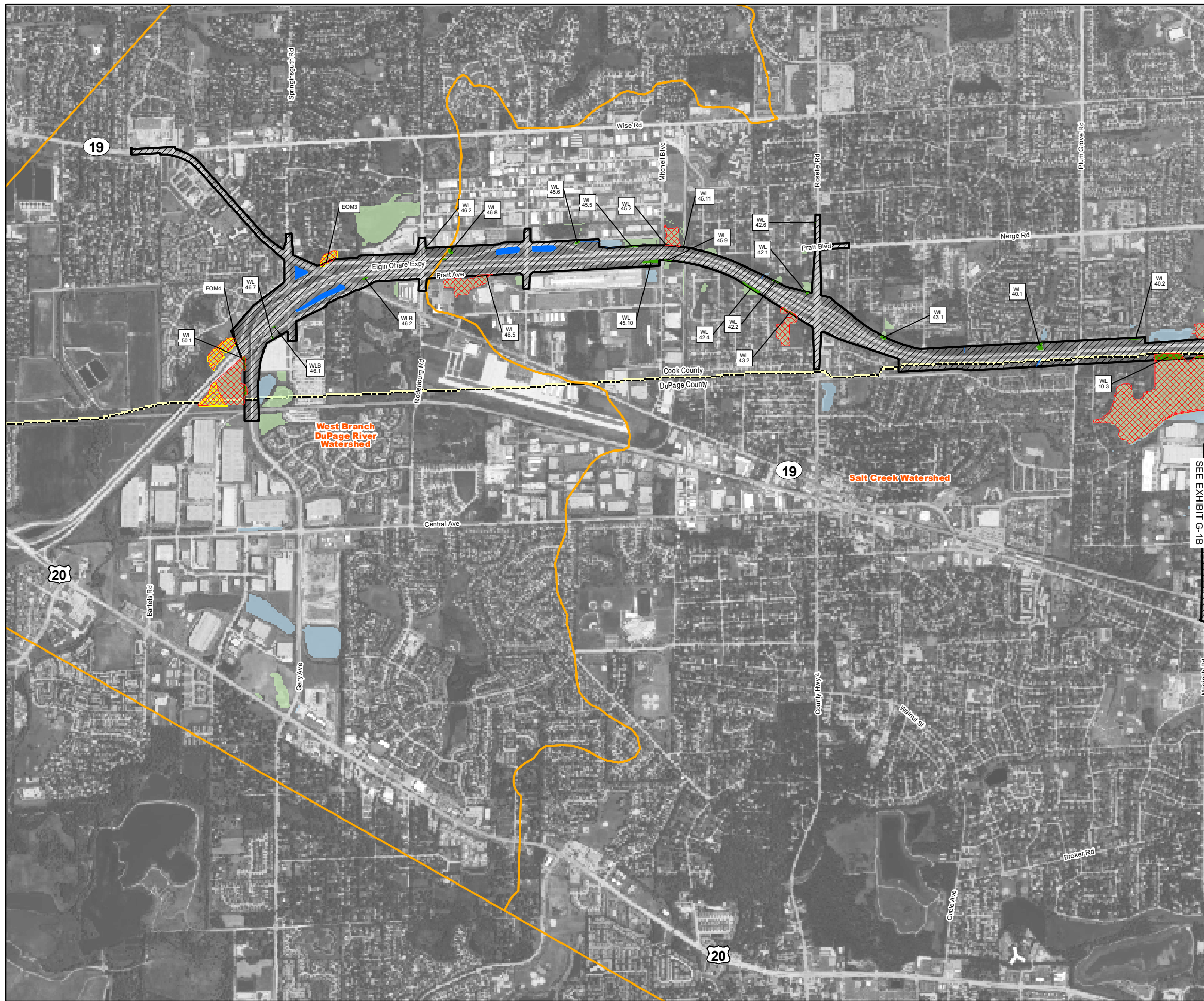
^a Some wetlands include more than one community type or contain areas of open water. The dominant community type is listed.

^b Jurisdictional status is based on preliminary assessment and is subject to change pending more detailed studies to be completed as part of the Tier Two environmental studies and following a USACE jurisdictional determination. Mitigation sites were assumed to be USACE jurisdictional.

^c Exempt areas include man-made wetland bottom stormwater management facilities (i.e., wetland basins) where wetland impacts may not be regulated by the USACE and/or IDNR. Subject to regulatory concurrence.

^d Approximate wetland acreage, impacts, and percentages are rounded; "0" represents a value of less than 0.05. Percentages and impact totals for each alternative were calculated prior to rounding. "--" represents no impact.

^e Wetland acreages are approximate. Acreage is based on preliminary field reconnaissance and available wetland resources as discussed in Section 2, *Affected Environment*. Wetland boundaries may vary from those that are mapped.



Legend

	Impacted Wetlands		County Boundary
	Impacted Waters		Alternative 203
	Mitigation Sites ^{1,2}		Alternative 402
	Wetlands ^{1,3}		Option A
	Waters ^{1,3}		Option D
	Higher Quality Wetlands ⁵		OMP Acquisition Area ⁶
	OMP Wetlands		

NOTE:
 1. ALL AREAS IDENTIFIED ON THE NWI & DCWI ARE SHOWN AS WETLAND ON THIS EXHIBIT. WETLANDS AND WATERS LOCATED NEAR PROPOSED PROJECT IMPROVEMENTS WERE REFINED FROM EXISTING NWI AND DCWI MAPPING BASED ON PRELIMINARY FIELD RECONNAISSANCE.
 2. ONLY MITIGATION SITES NEAR PROPOSED IMPROVEMENTS ARE SHOWN.
 3. INCLUDES POTENTIALLY JURISDICTIONAL WETLAND BOTTOM STORMWATER FACILITIES.
 4. WETLANDS WITHIN OMP LIMITS ARE SHOWN SEPARATELY. A SECTION 404 CLEAN WATER ACT PERMIT WAS OBTAINED TO FILL ALL OMP WETLANDS.
 5. INCLUDES MODERATE TO HIGH QUALITY WETLANDS BASED ON PRELIMINARY FIELD RECONNAISSANCE AND AVAILABLE DATA. QUALITY DESIGNATIONS ARE ONLY PROVIDED FOR POTENTIALLY IMPACTED WETLANDS, AND ARE SUBJECT TO CHANGE.
 6. IMPACTS OCCURRING WITHIN OMP ACQUISITION AREA HAVE ALREADY BEEN ACCOUNTED FOR IN THE OMP ACTION.

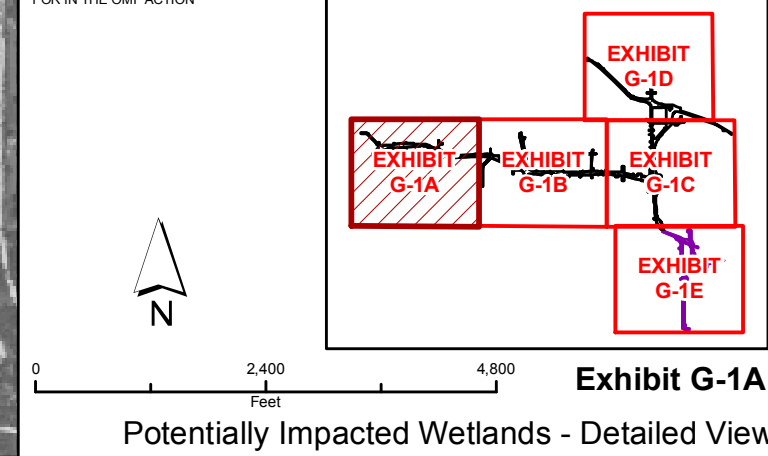
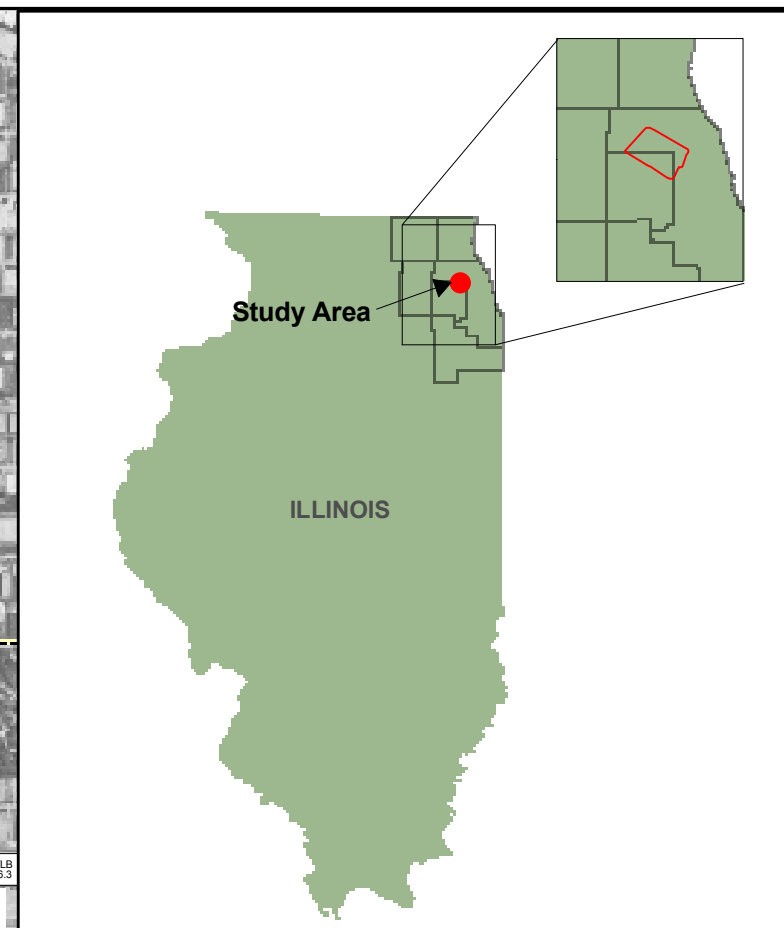
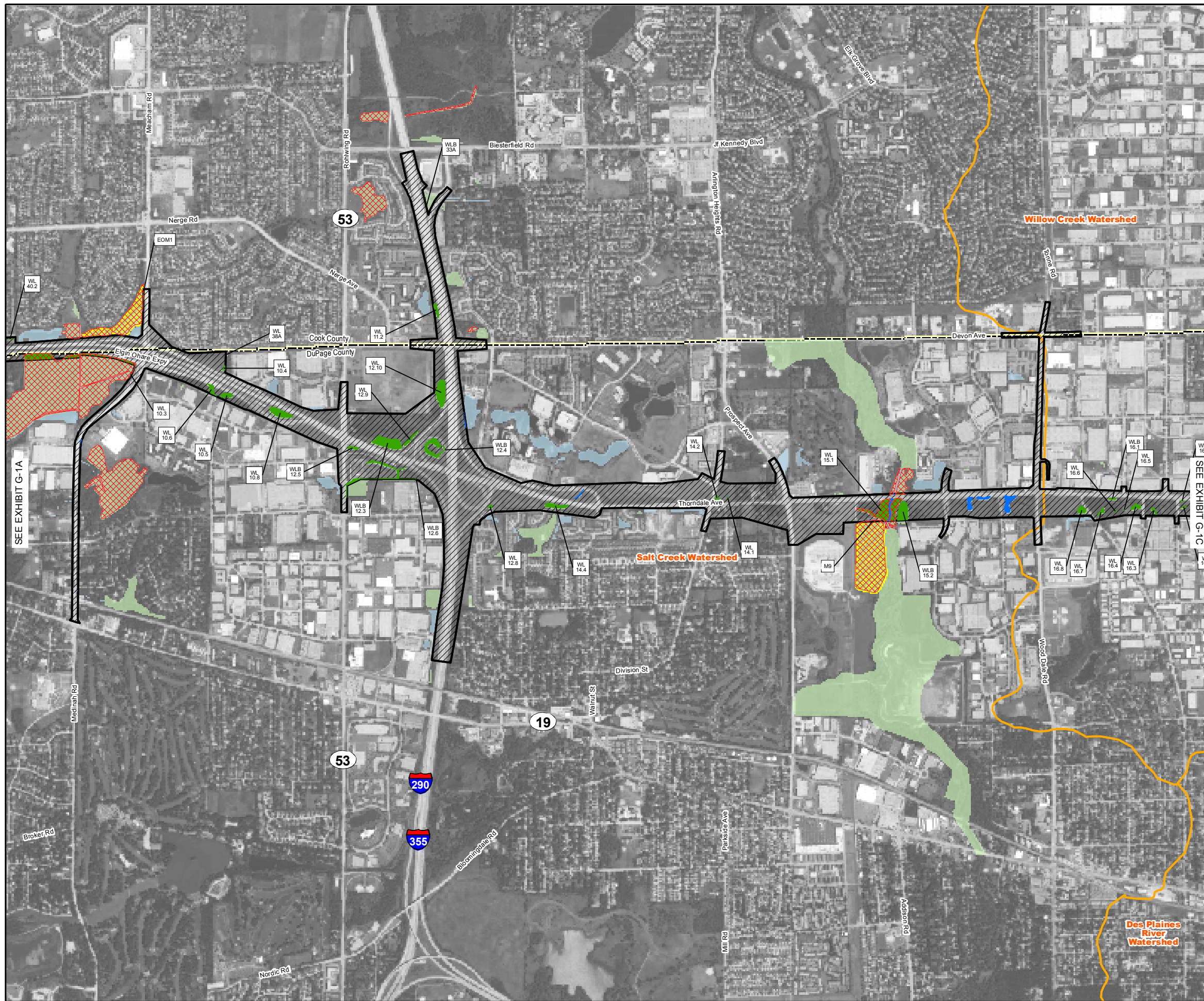


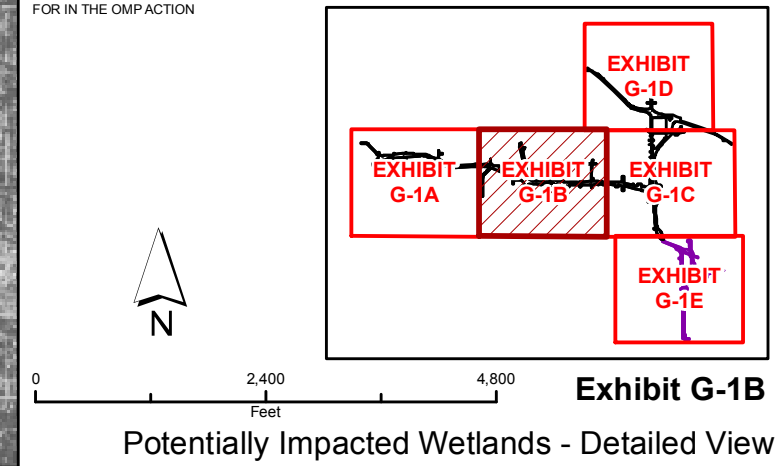
Exhibit G-1A
 Potentially Impacted Wetlands - Detailed View

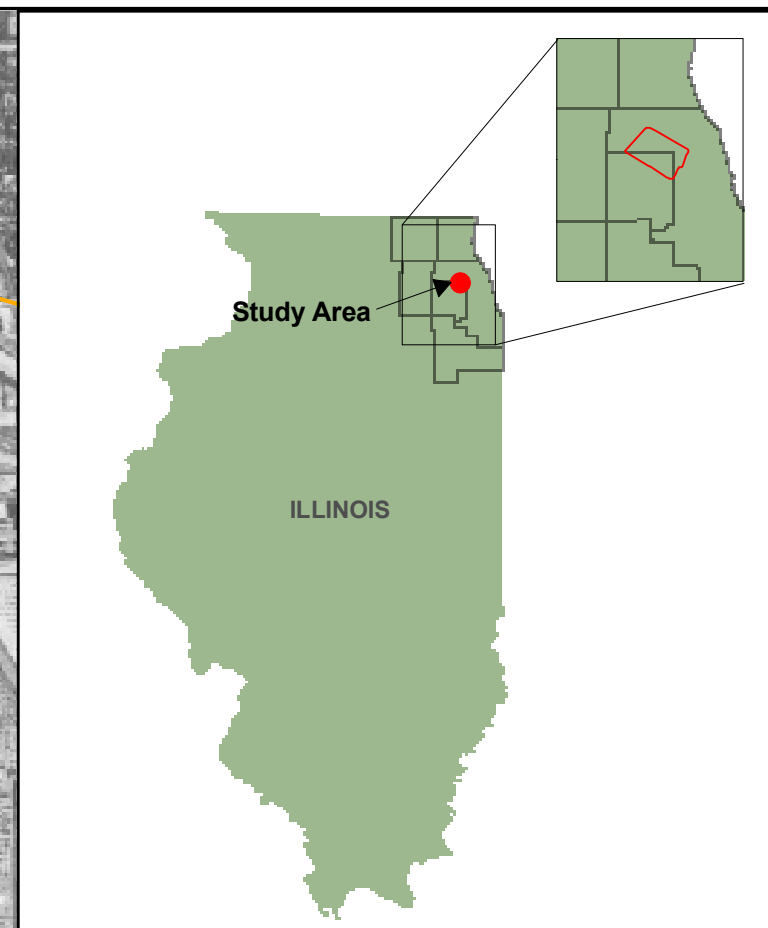
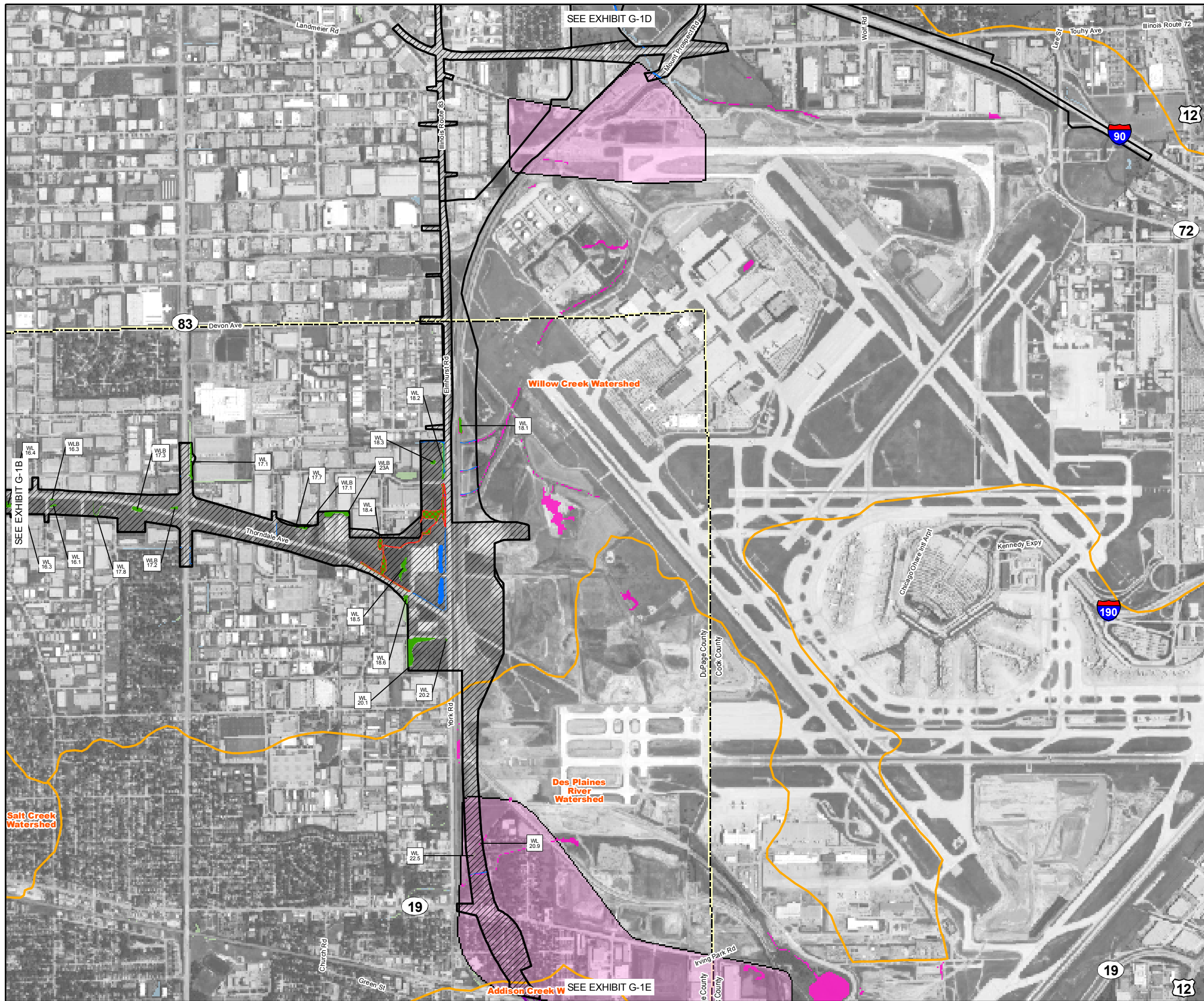


Legend

	Impacted Wetlands		County Boundary
	Impacted Waters		Alternative 203
	Mitigation Sites ^{1,2}		Alternative 402
	Wetlands ^{1,3}		Option A
	Waters ^{1,3}		Option D
	Higher Quality Wetlands ⁵		OMP Acquisition Area ⁶
	OMP Wetlands		

NOTE:
 1. ALL AREAS IDENTIFIED ON THE NWI & DCWI ARE SHOWN AS WETLAND ON THIS EXHIBIT. WETLANDS AND WATERS LOCATED NEAR PROPOSED PROJECT IMPROVEMENTS WERE REFINED FROM EXISTING NWI AND DCWI MAPPING BASED ON PRELIMINARY FIELD RECONNAISSANCE.
 2. ONLY MITIGATION SITES NEAR PROPOSED IMPROVEMENTS ARE SHOWN.
 3. INCLUDES POTENTIALLY JURISDICTIONAL WETLAND BOTTOM STORMWATER FACILITIES.
 4. WETLANDS WITHIN OMP LIMITS ARE SHOWN SEPARATELY. A SECTION 404 CLEAN WATER ACT PERMIT WAS OBTAINED TO FILL ALL OMP WETLANDS.
 5. INCLUDES MODERATE TO HIGH QUALITY WETLANDS BASED ON PRELIMINARY FIELD RECONNAISSANCE AND AVAILABLE DATA. QUALITY DESIGNATIONS ARE ONLY PROVIDED FOR POTENTIALLY IMPACTED WETLANDS, AND ARE SUBJECT TO CHANGE.
 6. IMPACTS OCCURRING WITHIN OMP ACQUISITION AREA HAVE ALREADY BEEN ACCOUNTED FOR IN THE OMP ACTION.

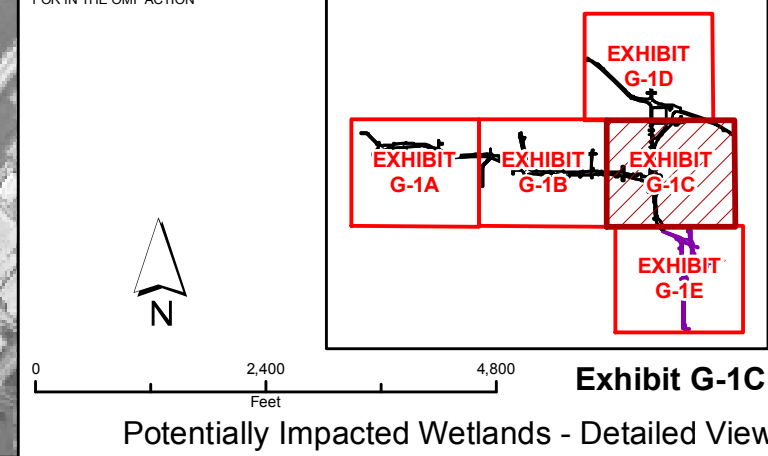


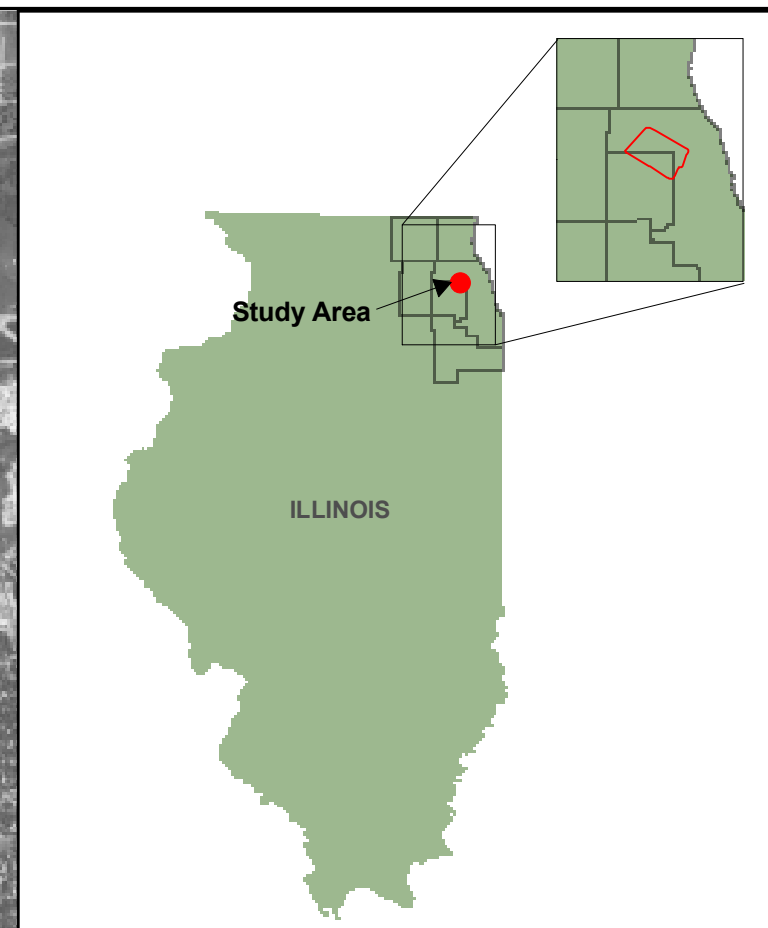
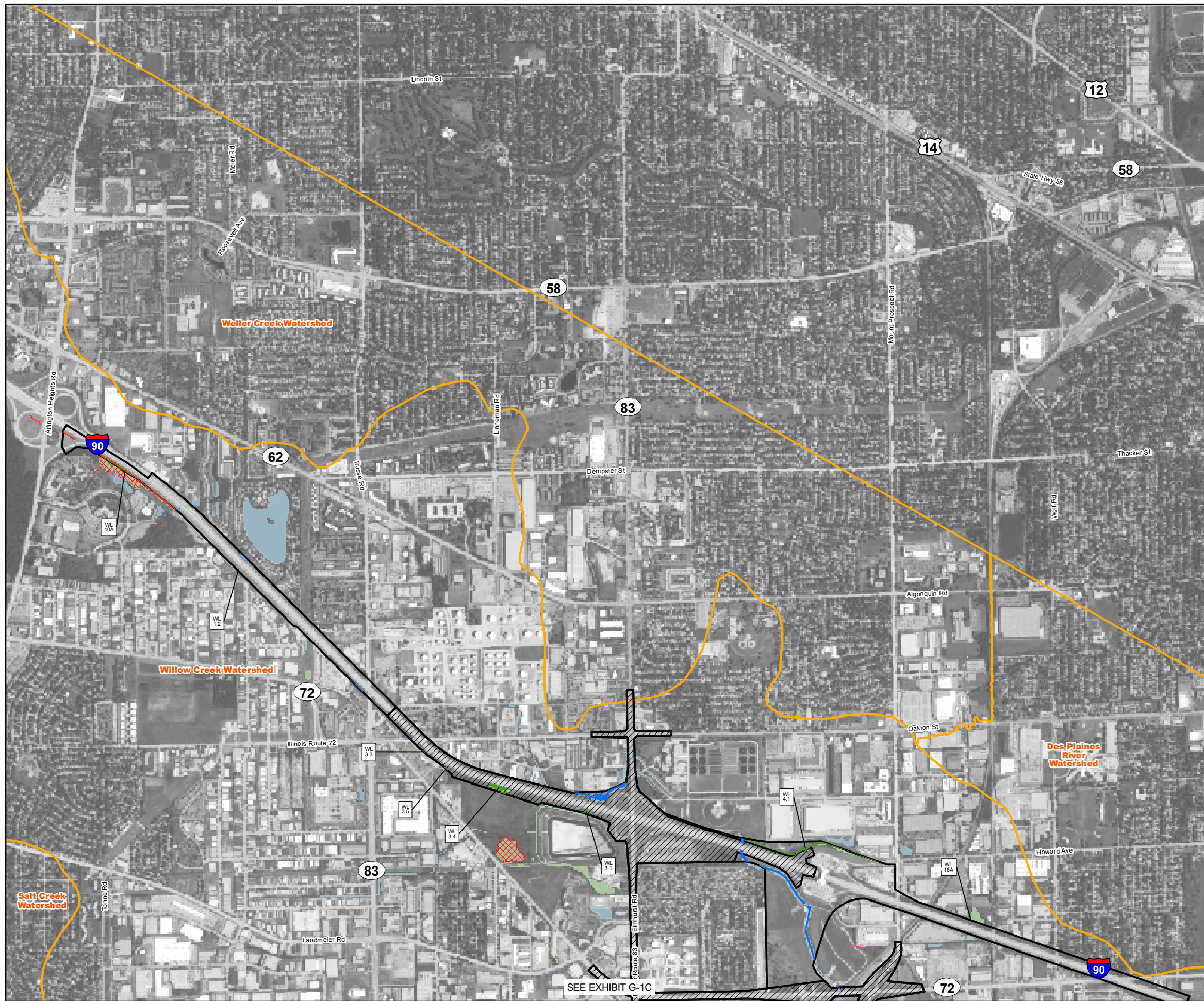


Legend

	Impacted Wetlands		County Boundary
	Impacted Waters		Alternative 203
	Mitigation Sites ^{1,2}		Alternative 402
	Wetlands ^{1,3}		Option A
	Waters ^{1,3}		Option D
	Higher Quality Wetlands ⁵		OMP Acquisition Area ⁶
	OMP Wetlands		

NOTE:
 1. ALL AREAS IDENTIFIED ON THE NWI & DCWI ARE SHOWN AS WETLAND ON THIS EXHIBIT. WETLANDS AND WATERS LOCATED NEAR PROPOSED PROJECT IMPROVEMENTS WERE REFINED FROM EXISTING NWI AND DCWI MAPPING BASED ON PRELIMINARY FIELD RECONNAISSANCE.
 2. ONLY MITIGATION SITES NEAR PROPOSED IMPROVEMENTS ARE SHOWN
 3. INCLUDES POTENTIALLY JURISDICTIONAL WETLAND BOTTOM STORMWATER FACILITIES
 4. WETLANDS WITHIN OMP LIMITS ARE SHOWN SEPARATELY. A SECTION 404 CLEAN WATER ACT PERMIT WAS OBTAINED TO FILL ALL OMP WETLANDS
 5. INCLUDES MODERATE TO HIGH QUALITY WETLANDS BASED ON PRELIMINARY FIELD RECONNAISSANCE AND AVAILABLE DATA. QUALITY DESIGNATIONS ARE ONLY PROVIDED FOR POTENTIALLY IMPACTED WETLANDS, AND ARE SUBJECT TO CHANGE
 6. IMPACTS OCCURRING WITHIN OMP ACQUISITION AREA HAVE ALREADY BEEN ACCOUNTED FOR IN THE OMP ACTION

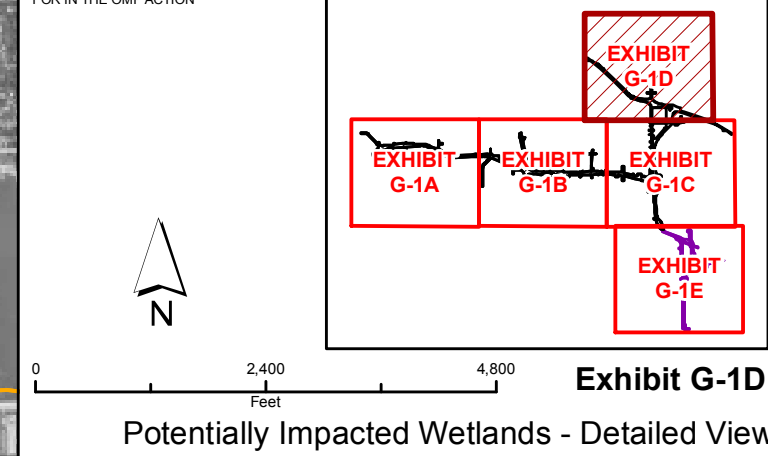


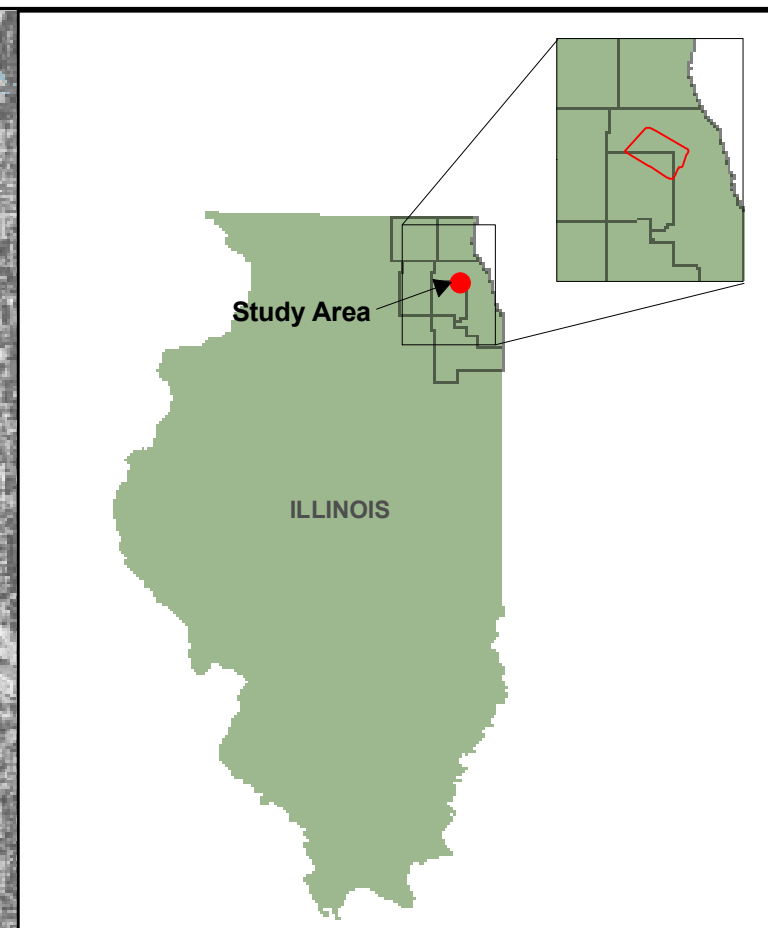
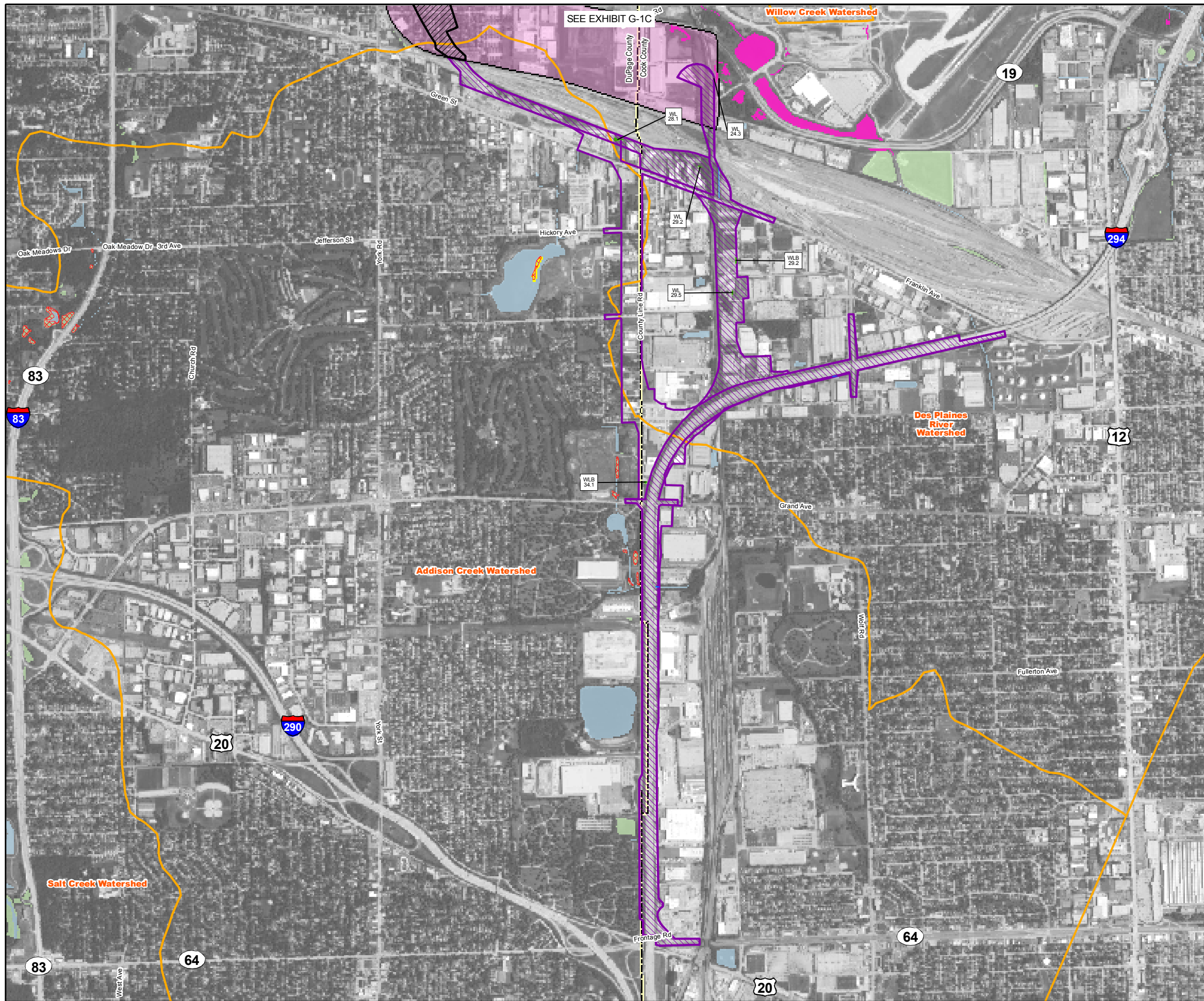


Legend

	Impacted Wetlands		County Boundary
	Impacted Waters		Alternative 203
	Mitigation Sites ^{1,2}		Alternative 402
	Wetlands ^{1,3}		Option A
	Waters ^{1,3}		Option D
	Higher Quality Wetlands ⁵		OMP Acquisition Area ⁶
	OMP Wetlands		

NOTE:
 1. ALL AREAS IDENTIFIED ON THE NWI & DCWI ARE SHOWN AS WETLAND ON THIS EXHIBIT. WETLANDS AND WATERS LOCATED NEAR PROPOSED PROJECT IMPROVEMENTS WERE REFINED FROM EXISTING NWI AND DCWI MAPPING BASED ON PRELIMINARY FIELD RECONNAISSANCE.
 2. ONLY MITIGATION SITES NEAR PROPOSED IMPROVEMENTS ARE SHOWN.
 3. INCLUDES POTENTIALLY JURISDICTIONAL WETLAND BOTTOM STORMWATER FACILITIES.
 4. WETLANDS WITHIN OMP LIMITS ARE SHOWN SEPARATELY. A SECTION 404 CLEAN WATER ACT PERMIT WAS OBTAINED TO FILL ALL OMP WETLANDS.
 5. INCLUDES MODERATE TO HIGH QUALITY WETLANDS BASED ON PRELIMINARY FIELD RECONNAISSANCE AND AVAILABLE DATA. QUALITY DESIGNATIONS ARE ONLY PROVIDED FOR POTENTIALLY IMPACTED WETLANDS, AND ARE SUBJECT TO CHANGE.
 6. IMPACTS OCCURRING WITHIN OMP ACQUISITION AREA HAVE ALREADY BEEN ACCOUNTED FOR IN THE OMP ACTION.





Legend

	Impacted Wetlands		County Boundary
	Impacted Waters		Alternative 203
	Mitigation Sites ^{1,2}		Alternative 402
	Wetlands ^{1,3}		Option A
	Waters ^{1,3}		Option D
	Higher Quality Wetlands ⁵		OMP Acquisition Area ⁶
	OMP Wetlands		

NOTE:
 1. ALL AREAS IDENTIFIED ON THE NWI & DCWI ARE SHOWN AS WETLAND ON THIS EXHIBIT. WETLANDS AND WATERS LOCATED NEAR PROPOSED PROJECT IMPROVEMENTS WERE REFINED FROM EXISTING NWI AND DCWI MAPPING BASED ON PRELIMINARY FIELD RECONNAISSANCE.
 2. ONLY MITIGATION SITES NEAR PROPOSED IMPROVEMENTS ARE SHOWN.
 3. INCLUDES POTENTIALLY JURISDICTIONAL WETLAND BOTTOM STORMWATER FACILITIES.
 4. WETLANDS WITHIN OMP LIMITS ARE SHOWN SEPARATELY. A SECTION 404 CLEAN WATER ACT PERMIT WAS OBTAINED TO FILL ALL OMP WETLANDS.
 5. INCLUDES MODERATE TO HIGH QUALITY WETLANDS BASED ON PRELIMINARY FIELD RECONNAISSANCE AND AVAILABLE DATA. QUALITY DESIGNATIONS ARE ONLY PROVIDED FOR POTENTIALLY IMPACTED WETLANDS, AND ARE SUBJECT TO CHANGE.
 6. IMPACTS OCCURRING WITHIN OMP ACQUISITION AREA HAVE ALREADY BEEN ACCOUNTED FOR IN THE OMP ACTION.

