

Study Area

ILLINOIS

Legend

Impacted Wetlands	County Boundary
Wetlands 1, 3	Alternative 203
Mitigation Sites 1, 2	Alternative 402
Wetlands 1, 3	Option A
Waters 1, 3	Option D
Higher Quality Wetlands 5	OMP Acquisition Area 6
OMP Wetlands	

NOTE:

1. ALL AREAS IDENTIFIED ON THE NWI & DCWI ARE SHOWN AS WETLAND ON THIS EXHIBIT. WETLANDS AND WATERS LOCATED NEAR PROPOSED PROJECT IMPROVEMENTS WERE REFINED FROM EXISTING NWI AND DCWI MAPPING BASED ON PRELIMINARY FIELD RECONNAISSANCE.

2. ONLY MITIGATION SITES NEAR PROPOSED IMPROVEMENTS ARE SHOWN.

3. INCLUDES POTENTIALLY JURISDICTIONAL WETLAND BOTTOM STORMWATER CLEAN WATER ACT PERMIT WAS OBTAINED TO FILL ALL OMP WETLANDS.

4. WETLANDS WITHIN OMP LIMITS ARE SHOWN SEPARATELY. A SECTION 404 CLEAN WATER ACT PERMIT WAS OBTAINED TO FILL ALL OMP WETLANDS.

5. INCLUDES MODERATE TO HIGH QUALITY WETLANDS BASED ON PRELIMINARY FIELD RECONNAISSANCE AND AVAILABLE DATA. QUALITY DESIGNATIONS ARE ONLY PROVIDED FOR POTENTIALLY IMPACTED WETLANDS, AND ARE SUBJECT TO CHANGE.

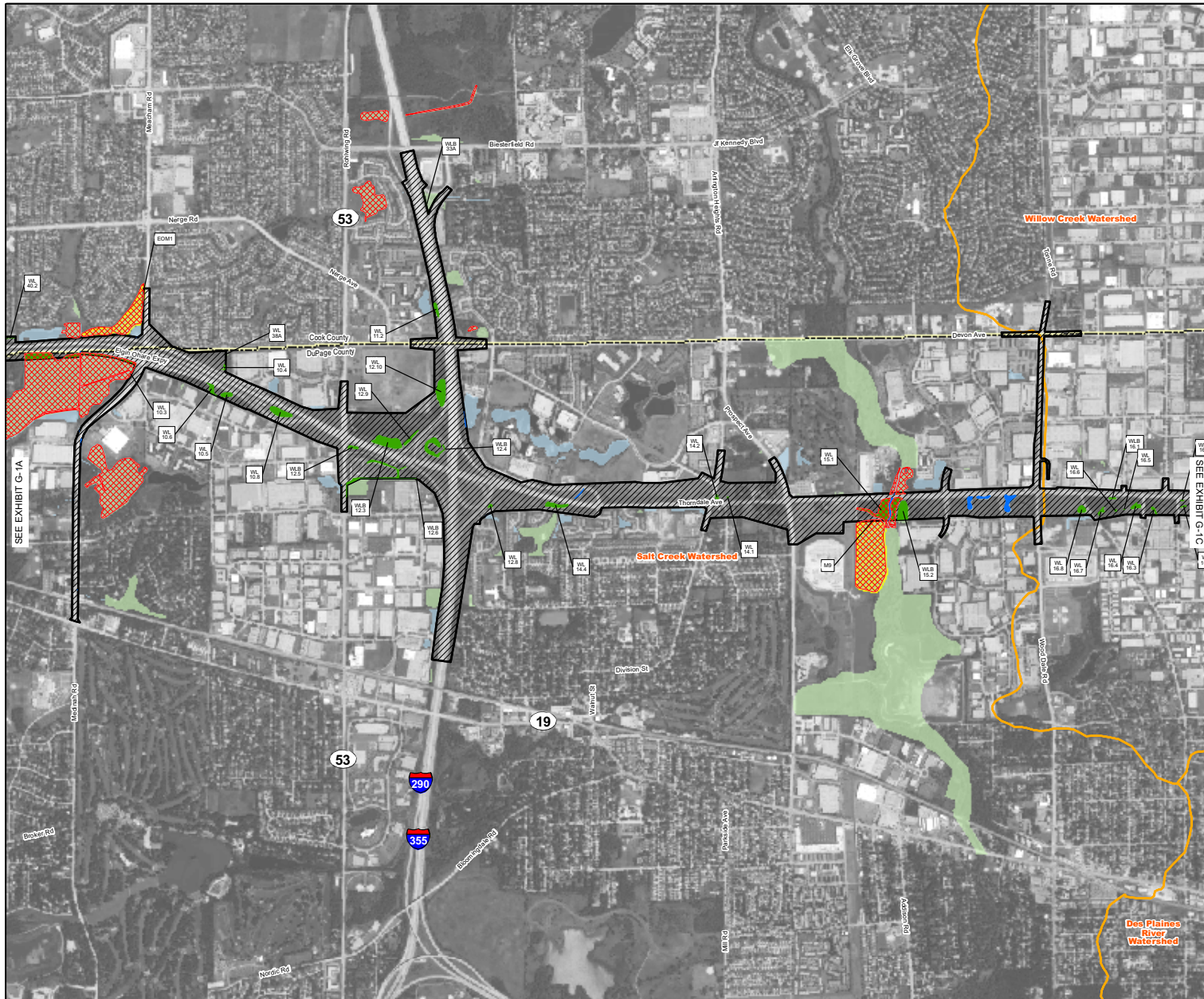
6. IMPACTS OCCURRING WITHIN OMP ACQUISITION AREA HAVE ALREADY BEEN ACCOUNTED FOR IN THE OMP ACTION.

Exhibit G-1A

0 2,400 4,800 Feet

Exhibit G-1A

Potentially Impacted Wetlands - Detailed View



Study Area

ILLINOIS

Legend

Impacted Wetlands	County Boundary
Impacted Waters	Alternative 203
Mitigation Sites ^{1,2}	Alternative 402
Wetlands ^{1,3}	Option A
Waters ^{1,3}	Option D
Higher Quality Wetlands ⁵	OMP Acquisition Area ⁶
OMP Wetlands	

NOTE:

1 ALL AREAS IDENTIFIED ON THE NWI & DCWI ARE SHOWN AS WETLAND ON THIS EXHIBIT. WETLANDS AND WATERS LOCATED NEAR PROPOSED PROJECT IMPROVEMENTS WERE REFINED FROM EXISTING NWI AND DCWI MAPPING BASED ON PRELIMINARY FIELD RECONNAISSANCE.

2 ONLY MITIGATION SITES NEAR PROPOSED IMPROVEMENTS ARE SHOWN.

3 INCLUDES POTENTIALLY JURISDICTIONAL WETLAND BOTTOM STORAGE FACILITIES.

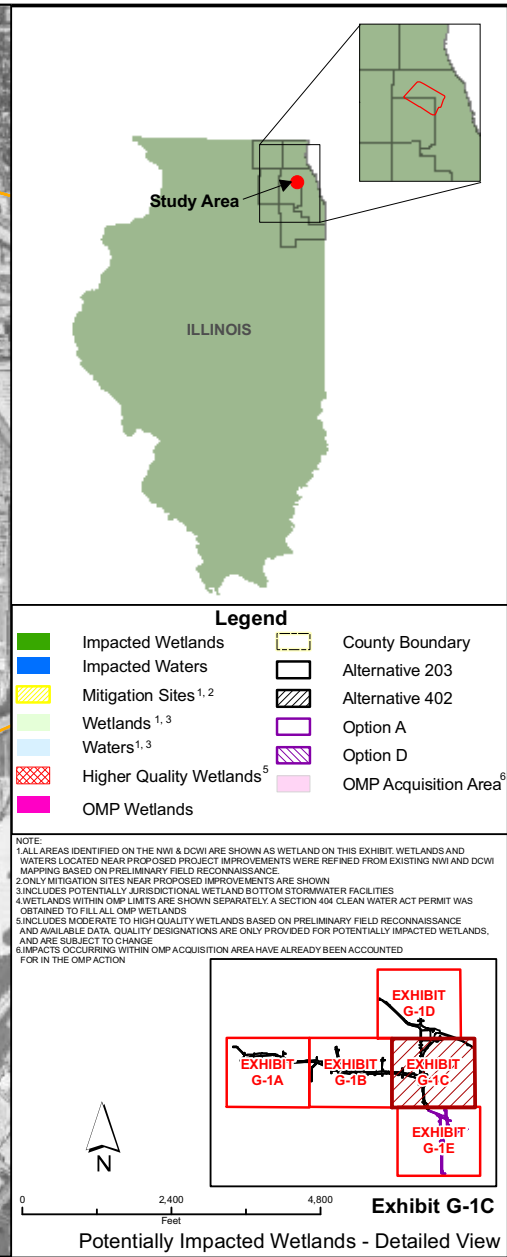
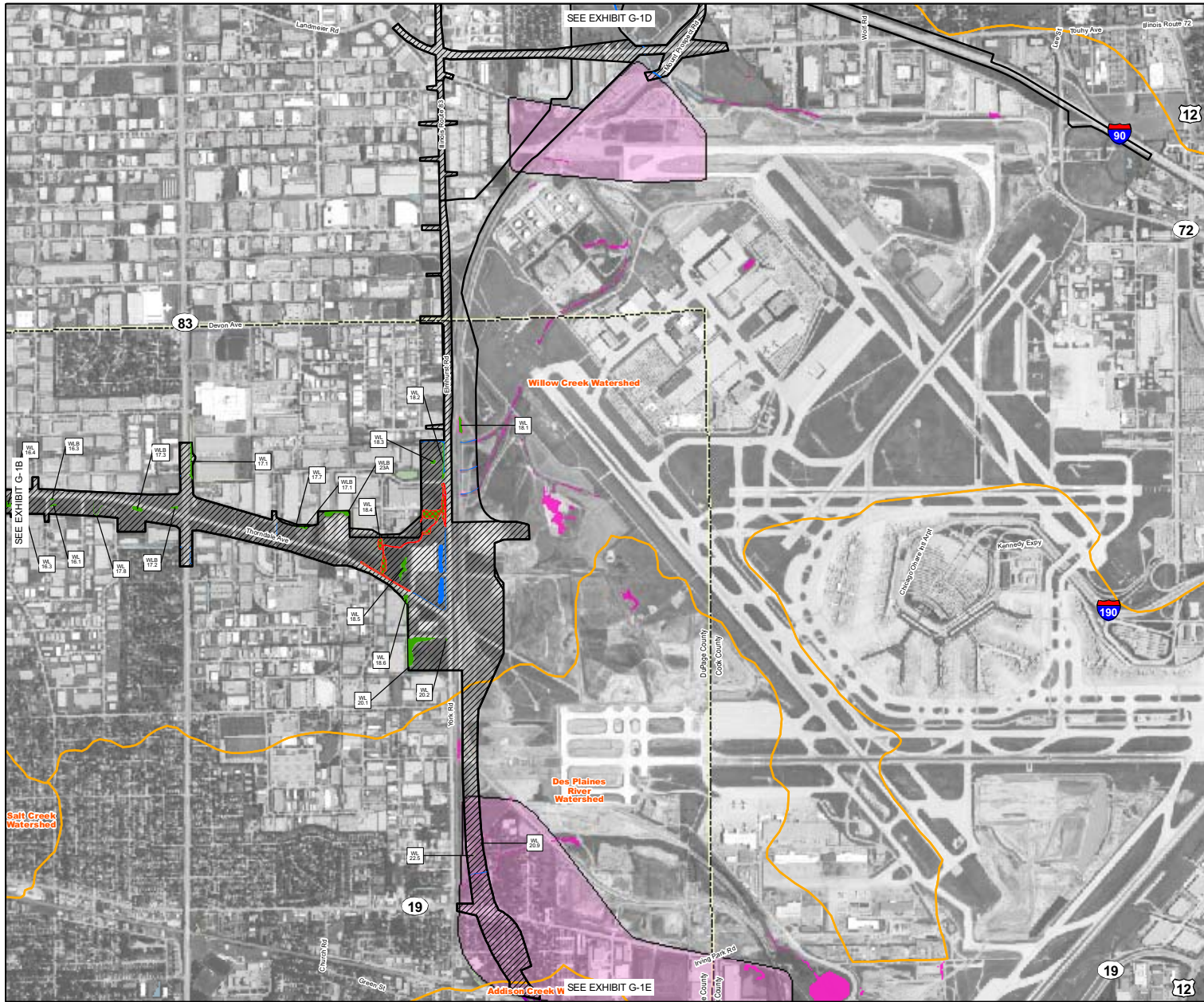
4 WETLANDS WITHIN OMP LIMITS ARE SHOWN SEPARATELY. A SECTION 404 CLEAN WATER ACT PERMIT WAS OBTAINED TO FILL ALL OMP WETLANDS.

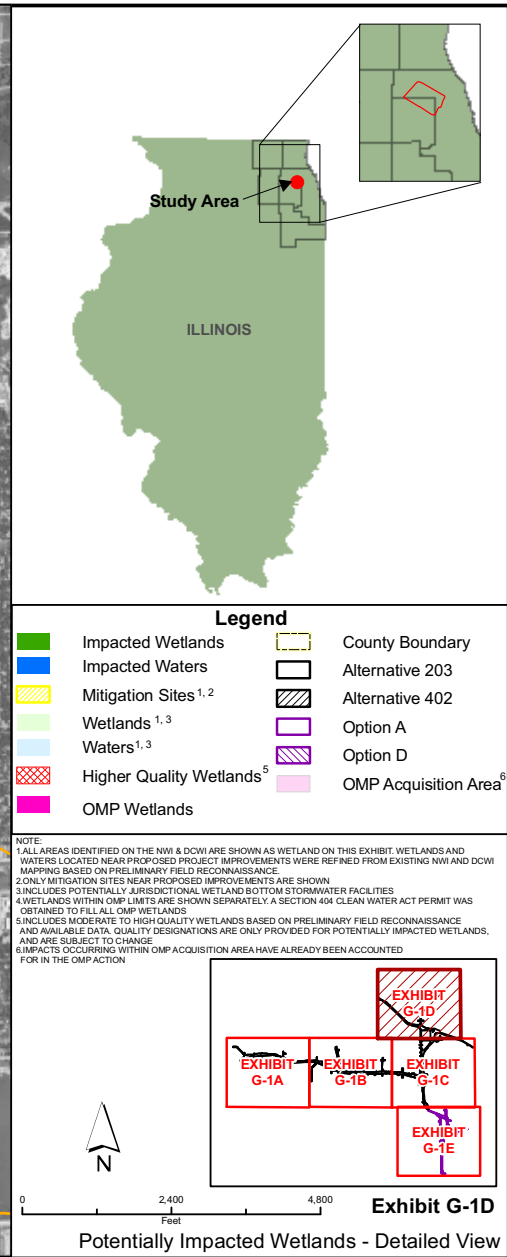
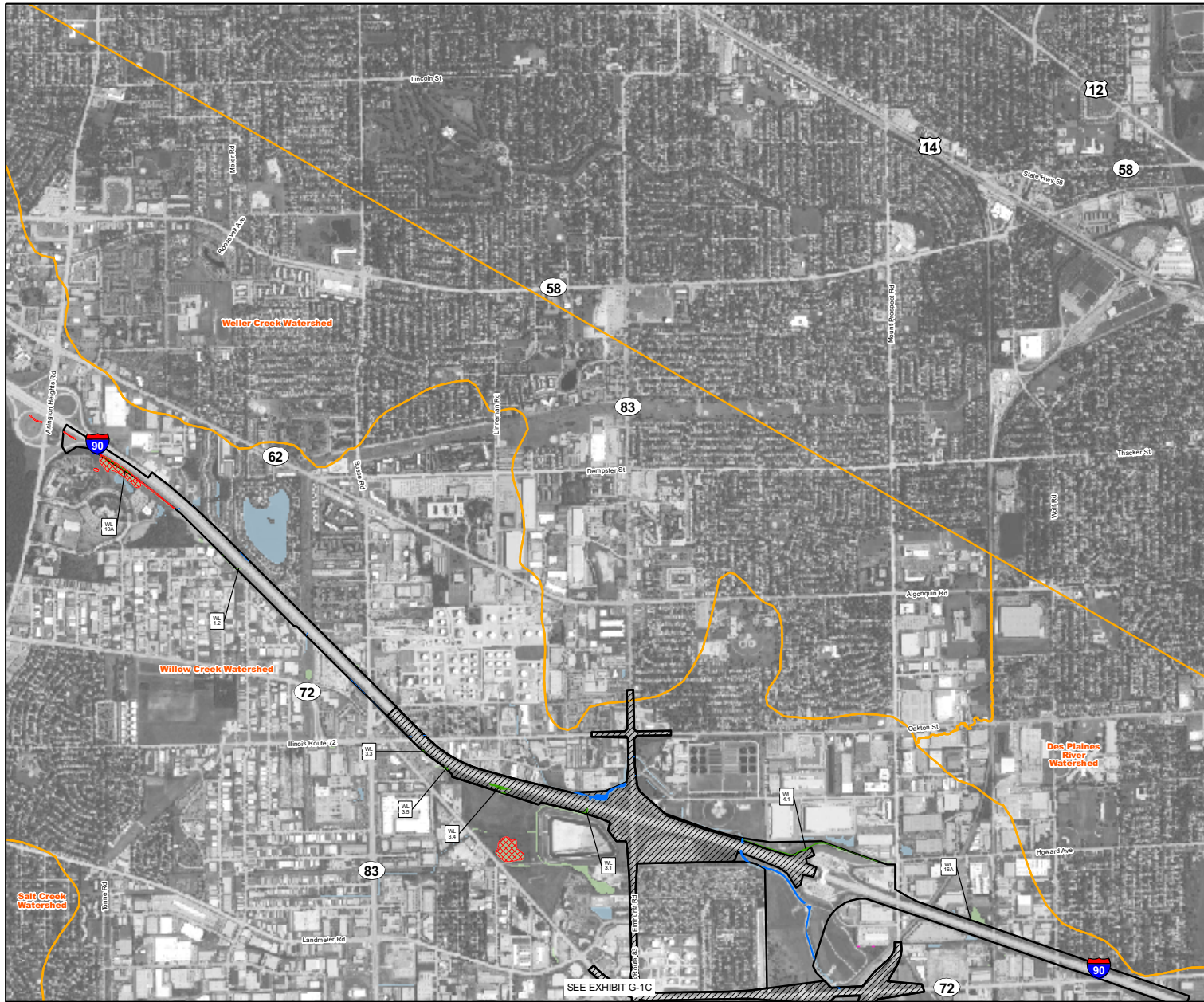
5 INCLUDES MODERATE TO HIGH QUALITY WETLANDS BASED ON PRELIMINARY FIELD RECONNAISSANCE AND AVAILABLE DATA. QUALITY DESIGNATIONS ARE ONLY PROVIDED FOR POTENTIALLY IMPACTED WETLANDS, AND ARE SUBJECT TO CHANGE.

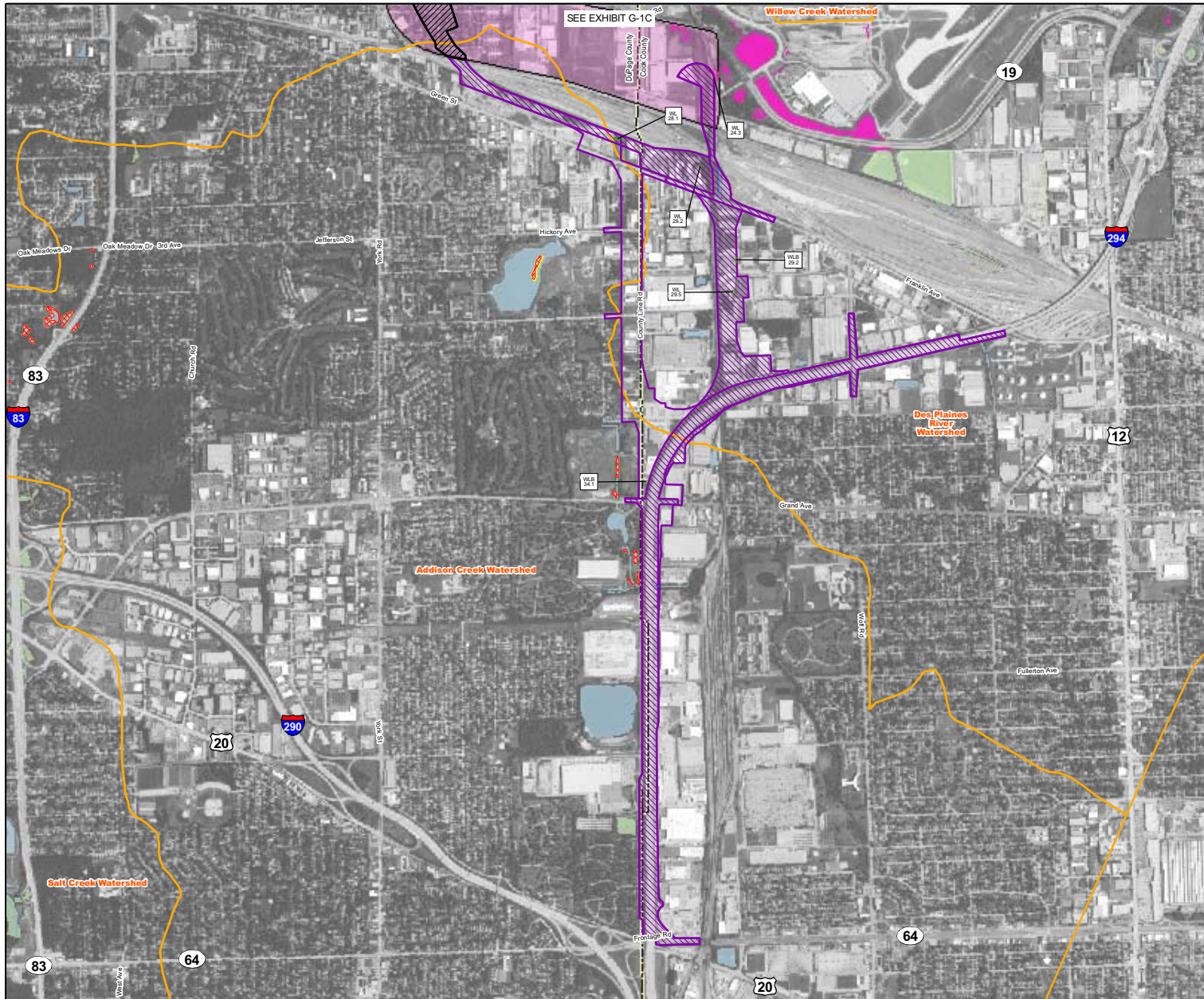
6 IMPACTS OCCURRING WITHIN OMP ACQUISITION AREA HAVE ALREADY BEEN ACCOUNTED FOR IN THE OMP ACTION.

Exhibit G-1B

0 2,400 4,800 Feet







Study Area

ILLINOIS

Legend

 Impacted Wetlands	 County Boundary
 Impacted Waters	 Alternative 203
 Mitigation Sites ^{1,2}	 Alternative 402
 Wetlands ^{1,3}	 Option A
 Waters ^{1,3}	 Option D
 Higher Quality Wetlands ⁵	 OMP Acquisition Area ⁶
 OMP Wetlands	

NOTE:

1. ALL AREAS IDENTIFIED ON THE NWI & DCWI ARE SHOWN AS WETLAND ON THIS EXHIBIT. WETLANDS AND WATERS LOCATED NEAR PROPOSED PROJECT IMPROVEMENTS WERE REFINED FROM EXISTING NWI AND DCWI MAPPING BASED ON PRELIMINARY FIELD RECONNAISSANCE.

2. ONLY MITIGATION SITES NEAR PROPOSED IMPROVEMENTS ARE SHOWN.

3. INCLUDES POTENTIALLY JURISDICTIONAL WETLAND BOTTOM STORMWATER FACILITIES.

4. WETLANDS WITHIN OMP LIMITS ARE SHOWN SEPARATELY. A SECTION 404 CLEAN WATER ACT PERMIT WAS OBTAINED TO FILL ALL OMP WETLANDS.

5. INCLUDES MODERATE TO HIGH QUALITY WETLANDS BASED ON PRELIMINARY FIELD RECONNAISSANCE AND AVAILABLE DATA. QUALITY DESIGNATIONS ARE ONLY PROVIDED FOR POTENTIALLY IMPACTED WETLANDS, AND ARE SUBJECT TO CHANGE.

6. IMPACTS OCCURRING WITHIN OMP ACQUISITION AREA HAVE ALREADY BEEN ACCOUNTED FOR IN THE OMP ACTION.

Exhibit G-1E

0 2,400 4,800 Feet

Potentially Impacted Wetlands - Detailed View