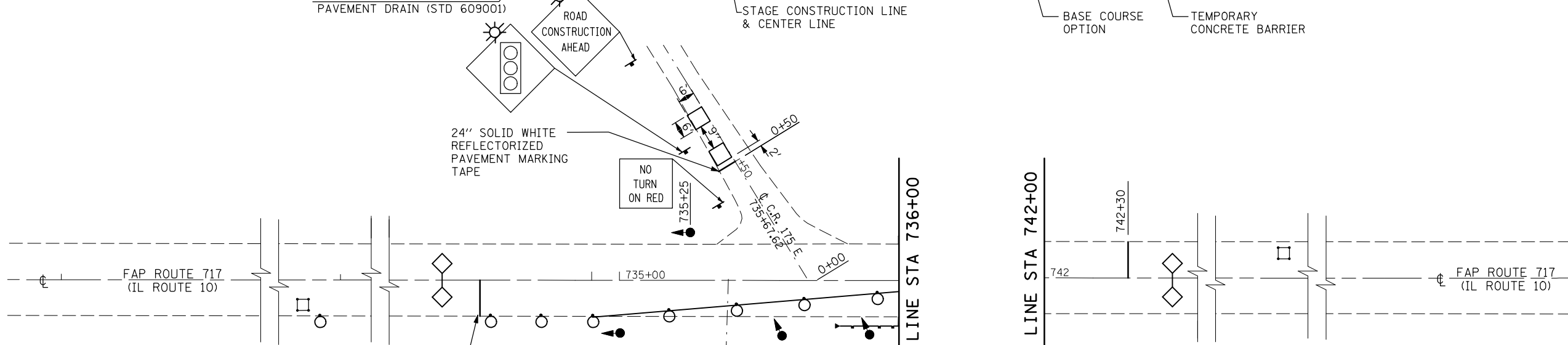
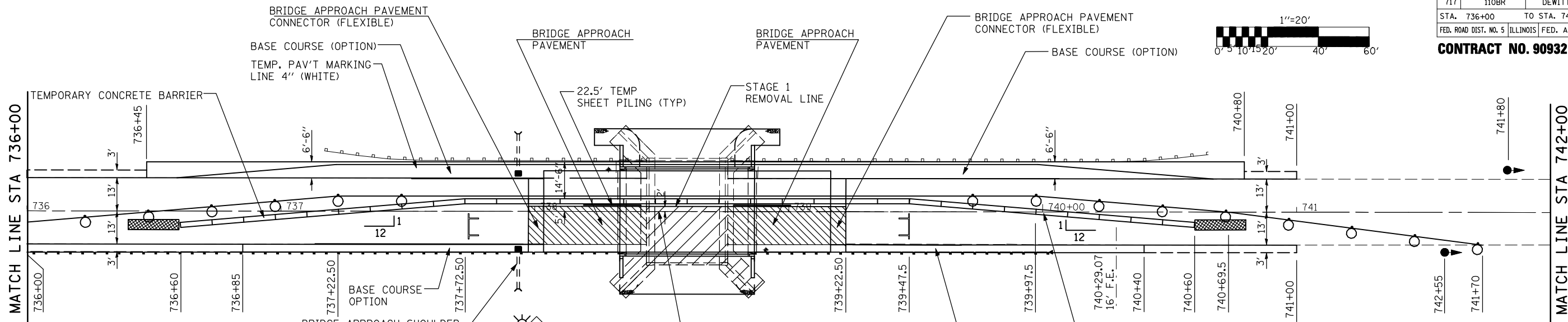
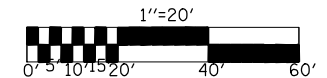


F.A.P. RTE.	SECTION	COUNTY	TOTAL SHEETS	SHEET NO.
717	110BR	DEWITT	40	6
STA. 736+00		TO STA. 741+00		
FED. ROAD DIST. NO. 5		ILLINOIS	FED. AID PROJECT	

CONTRACT NO. 90932



LEGEND

	BRIDGE DECK AND SUBSTRUCTURE REMOVAL		TYPE III BARRICADE WITH FLASHING LIGHT
	PAVEMENT REMOVAL		DRUM WITH STEADY BURNING LIGHT
	IMPACT ATTENUATOR		TRAFFIC SIGNAL
			INDUCTION LOOP DETECTOR
			TEMPORARY CONCRETE BARRIER

TRAFFIC BARRIER TERMINAL, TYPE 6

STATION	TO STATION	EACH
RT. 737+90.35	RT. 738+33.50	1
RT. 738+86.50	RT. 739+29.65	1
TOTAL		2

TRAFFIC BARRIER TERMINAL TYPE 1, SPECIAL (TANGENT)

STATION	TO STATION	EACH
RT. 735+77.85	RT. 736+27.85	1
RT. 739+54.65	RT. 740+04.65	1
TOTAL		2

STEEL PLATE BEAM GUARDRAIL, TYPE A

STATION	TO STATION	FOOT
RT. 736+27.85	RT. 737+90.35	162.5
RT. 739+29.65	RT. 739+54.65	25.0
TOTAL		187.5

PAVEMENT REMOVAL

STATION	TO STATION	SQ. YD.
RT. 737+97.50	RT. 738+44.00	78
RT. 738+76.00	RT. 739+22.50	78
TOTAL		156

BRIDGE APPROACH PAVEMENT CONNECTOR (FLEXIBLE)

STATION	TO STATION	SQ. YD.
RT. 737+97.50	RT. 738+03.50	11
RT. 739+16.50	RT. 739+22.50	11
TOTAL		22

BRIDGE APPROACH PAVEMENT

STATION	TO STATION	SQ. YD.
RT. 738+03.50	RT. 738+33.50	55.5
RT. 738+86.50	RT. 739+16.50	55.5
TOTAL		111

AGGREGATE SHOULDER

STATION	TO STATION	TON
RT. 736+00	RT. 736+85	2
RT. 740+40	RT. 741+00	1
TOTAL		3

GUARDRAIL REMOVAL

STATION	TO STATION	FOOT
RT. 736+55.08	RT. 738+44.00	188.92
RT. 738+76.00	RT. 739+90.14	114.14
TOTAL		303.06

BASE COURSE (OPTION)

STATION	TO STATION	SQ. YD.
LT. 736+45.00	LT. 738+44.00	144
LT. 738+76.00	LT. 740+80.00	147
RT. 736+85.00	RT. 737+97.50	38
RT. 739+22.50	RT. 740+40.00	39
RT. 737+91.50	RT. 737+97.50	4
TOTAL		372

NOTE: SEE STANDARD 701321 FOR ADDITIONAL INFORMATION

REVISIONS

NAME	DATE

ILLINOIS DEPARTMENT OF TRANSPORTATION
STAGE I CONSTRUCTION PLAN
IL. ROUTE 10 OVER UN-NAMED CREEK
FAP RTE. 717 SECTION 110BR
DEWITT COUNTY

SCALE: 1" = 20'
DATE: MAY 2009
DRAWN BY: RMH
CHECKED BY: MJS

TUG PROJ. # 10/15/2009 8TIME\$
PLOT DATE = 10/15/2009 8TIME\$
FILE NAME = #FILE\$