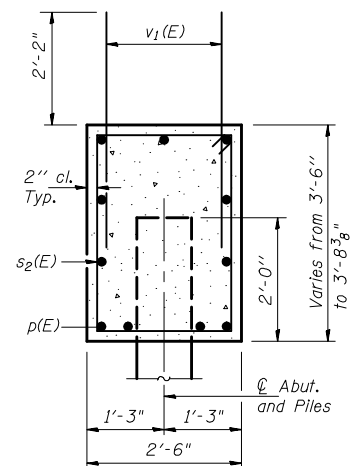
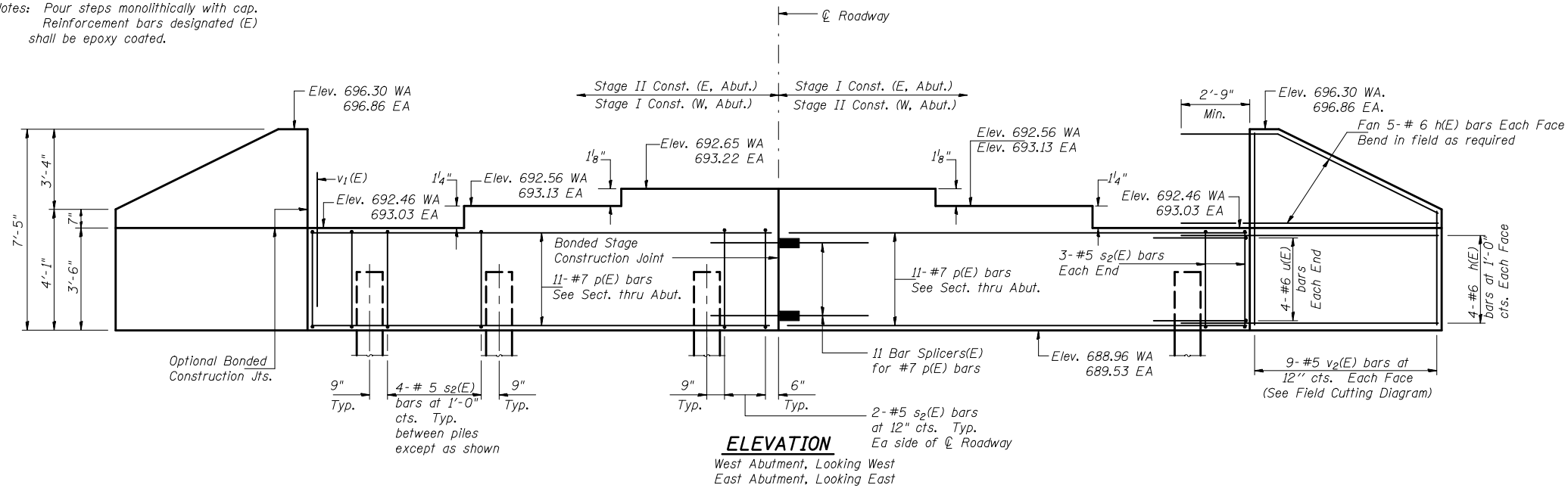


F.A.P. RTE.	SECTION	COUNTY	TOTAL SHEETS	SHEET NO.
717	110BR	DEWITT	40	17
STA. 736+00		TO STA. 741+00		
FED. ROAD DIST. NO. 5		ILLINOIS FED. AID PROJECT		
SHEET 10 OF 14 SHEETS				

CONTRACT NO. 90932

Notes: Four steps monolithically with cap.
Reinforcement bars designated (E)
shall be epoxy coated.

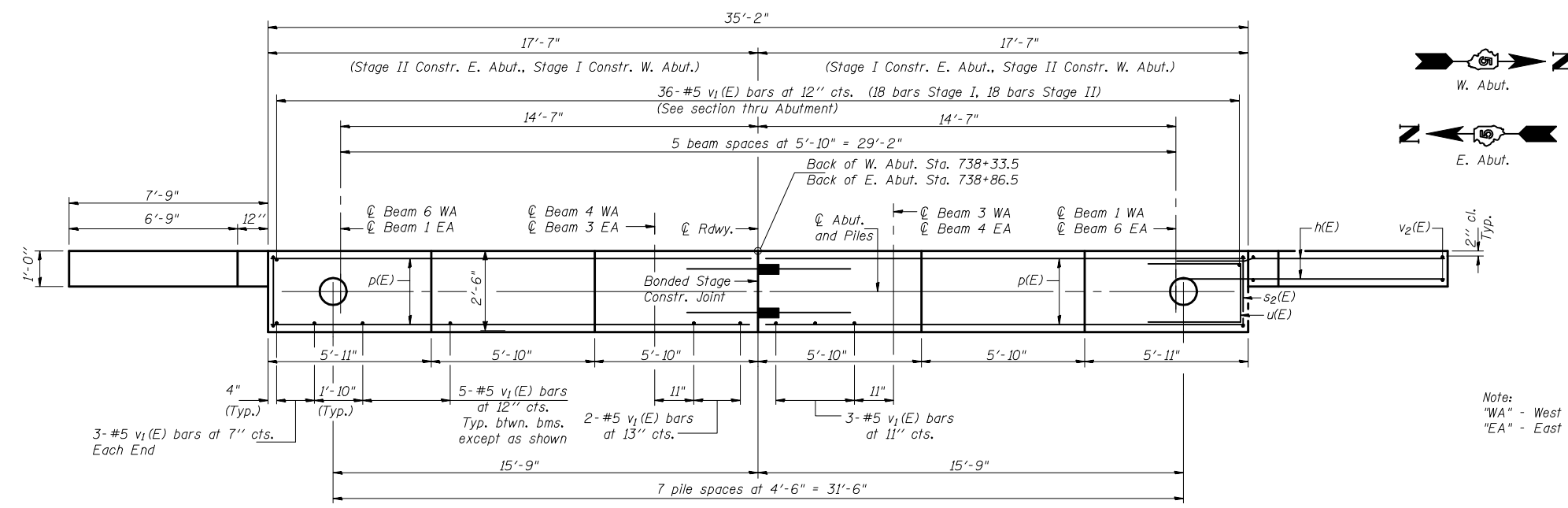


SEC. THRU ABUT.
(at Rt. L's)

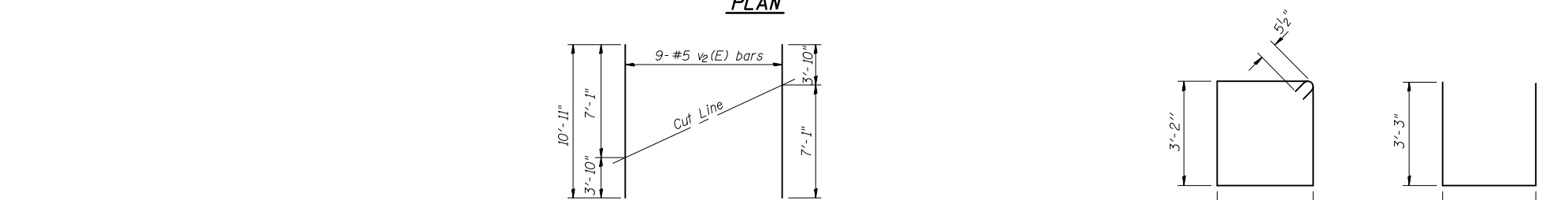
PILE DATA

Type	Metal Shell Piles, 12" x 0.250"
No Required	7+1 Test Pile @ East Abut.
Allowable Resistance Available	8 @ West Abut.
Nominal Required Bearing	240 Kips
Est. Length	41' W. Abut., 44' E. Abut.

The Metal Shell Piles shall be according to ASTM A252 Grade 3.



PLAN



FIELD CUTTING DIAGRAM

Order v2(E) full length. Cut as shown and use remainder of bars in opposite face.

TWO ABUTMENTS BILL OF MATERIAL

Bar	No.	Size	Length	Shape
h(E)	72	#6	10'-4"	—
p(E)	44	#7	17'-3"	—
s2(E)	68	#5	11'-7"	□
u(E)	16	#6	8'-7"	□
v1(E)	134	#5	4'-4"	—
v2(E)	36	#5	10'-11"	—
Item		Unit	Qty	
Concrete Structures		Cu Yd	30.4	
Reinforcement Bars Epoxy Coated		Lb	4710	
Structure Excavation		Cu Yd	269	
Furnishing Metal Shell Piles 12"x0.250"		Foot	636	
Driving Piles		Foot	636	
Test Pile Metal Shells		Each	1	

REVISIONS	
NAME	DATE

ILLINOIS DEPARTMENT OF TRANSPORTATION
ABUTMENT DETAILS
IL. ROUTE 10 OVER UN-NAMED CREEK
FAP RTE. 717 SECTION 110BR
STA. 738+60
DEWITT COUNTY STR. No. 020-0061
SCALE: N.T.S. DRAWN BY
DATE MAY 2009 CHECKED BY MJS

TUG PROJ. # PRJ0108
PLOT DATE = 10/15/2009 8:15 AM
FILE NAME = #FILE#