

STATE OF ILLINOIS  
DEPARTMENT OF TRANSPORTATION

F.A.I. RTE.	SECTION	COUNTY	TOTAL SHEETS	SHEET NO.
180	(06-2HB-2)BP	BUREAU	9	1
		ILLINOIS	CONTRACT NO. 66L25	

INDEX OF SHEETS

1. COVER SHEET
2. GENERAL NOTES
3. SUMMARY OF QUANTITIES
4. TYPICAL SECTIONS
5. STAGING DETAILS
- 6-9. EXISTING STRUCTURE DETAILS- LOCATION NO. 1. STRUCTURE NO. 006-0128

STANDARDS

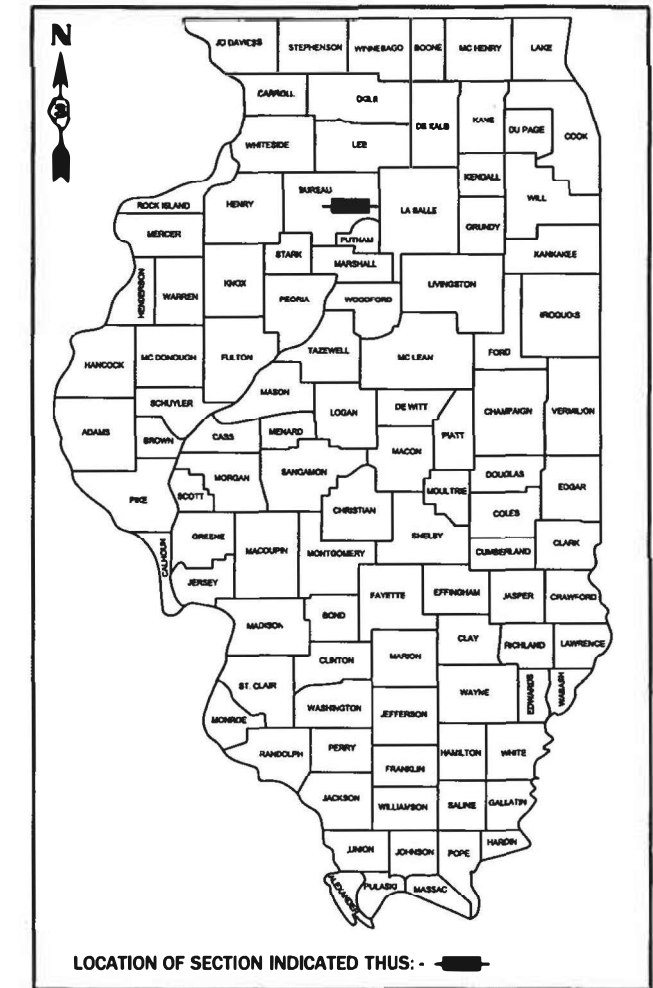
- |           |  |
|-----------|--|
| 000001 08 | STANDARD SYMBOLS, ABBREVIATIONS AND PATTERNS                                   |
| 001006    | DECIMAL OF AN INCH AND OF A FOOT   |
| 701101 05 | OFF ROAD OPERATIONS, MULTILANE, 15' (4.5 m) TO 24" (600 mm) FROM PAVEMENT EDGE |
| 701106 02 | OFF ROAD OPERATIONS, MULTILANE, MORE THAN 15' (4.5 m) AWAY                     |
| 701201-05 | LANE CLOSURE, 2L, 2W, DAY ONLY, FOR SPEEDS ≥ 45 MPH                            |
| 701301 04 | LANE CLOSURE, 2L, 2W, SHORT TIME OPERATIONS                                    |
| 701400 10 | APPROACH TO LANE CLOSURE, FREEWAY/EXPRESSWAY                                   |
| 701402 12 | LANE CLOSURE, FREEWAY/EXPRESSWAY, WITH BARRIER                                 |
| 701426 09 | LANE CLOSURE, MULTILANE INTERMITTENT OR MOVING OPERATION, FOR SPEEDS ≥ 45 MPH  |
| 701428 01 | TRAFFIC CONTROL, SETUP AND REMOVAL, FREEWAY/EXPRESSWAY                         |
| 701901 08 | TRAFFIC CONTROL DEVICES  |
| 704001 08 | TEMPORARY CONCRETE BARRIER   |
| 782006 01 | GUARDRAIL AND BARRIER WALL REFLECTOR MOUNTING DETAILS                          |

# PROPOSED HIGHWAY PLANS

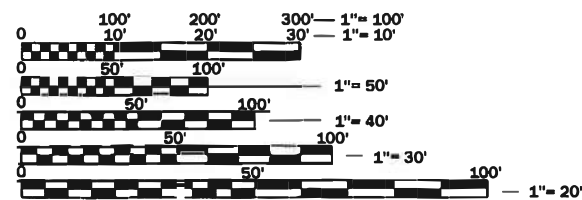
## F.A.I. ROUTE 180 (I-180) SECTION (06-2HB-2)BP PROJECT NHPP-2ZKP(401) BRIDGE PAINTING BUREAU COUNTY

C-93-111-20

**PROJECT LOCATION**  
STRUCTURE NO. 006-0128  
CARRYING 925 AVE. N. (TR 333)  
OVER FAI ROUTE 180 (I-180)  
2.5 MILES NORTH OF  
JUNCTION WITH IL ROUTE 29



**FUNCTIONAL CLASSIFICATION**  
RURAL  
INTERSTATE  
F.A.I. ROUTE 180 (I-180)  
2017 ADT = 2650  
P.V. 61.5% S.U. 6.4% M.U. 32.1%



FULL SIZE PLANS HAVE BEEN PREPARED USING STANDARD ENGINEERING SCALES. REDUCED SIZED PLANS WILL NOT CONFORM TO STANDARD SCALES. IN MAKING MEASUREMENTS ON REDUCED PLANS, THE ABOVE SCALES MAY BE USED.

J.U.L.I.E.  
JOINT UTILITY LOCATION INFORMATION FOR EXCAVATION  
1-800-892-0123  
OR 811

PROJECT ENGINEER JOE KANNEL P.E.  
UNIT CHIEF RON WOODSHANK  
DISTRICT 3 NO. (815) 434-6131  
CONTRACT NO. 66L25

STATE OF ILLINOIS  
DEPARTMENT OF TRANSPORTATION

SUBMITTED October 15, 2020  
*Masud Ahmed*  
REGIONAL ENGINEER

December 4, 2020  
*Scott A. Elk*  
ENGINEER OF DESIGN AND ENVIRONMENT

December 4, 2020  
*James J. Gu*  
DIRECTOR OF HIGHWAYS PROJECT IMPLEMENTATION

PRINTED BY THE AUTHORITY  
OF THE STATE OF ILLINOIS

**GENERAL NOTES**

PLAN DIMENSIONS AND DETAILS RELATIVE TO EXISTING PLANS ARE SUBJECT TO NOMINAL CONSTRUCTION VARIATIONS. THE CONTRACTOR SHALL FIELD VERIFY EXISTING DIMENSIONS AND DETAILS AFFECTING NEW CONSTRUCTION AND MAKE NECESSARY APPROVED ADJUSTMENTS PRIOR TO CONSTRUCTION OR ORDERING OF MATERIALS. SUCH VARIATIONS SHALL NOT BE CAUSE FOR ADDITIONAL COMPENSATION FOR A CHANGE IN SCOPE OF WORK; HOWEVER, THE CONTRACTOR WILL BE PAID FOR THE QUANTITY ACTUALLY FURNISHED AT THE UNIT PRICE BID FOR THE WORK.

STRUCTURE NO. 006-0128 SHALL BE DESIGNATED AS "LOCATION 1".

THE SSPC-QP1 AND SSPC-QP-2 "PAINTING CONTRACTOR CERTIFICATIONS" WILL BE REQUIRED FOR THIS PROJECT.

A MINIMUM OF TWO AIR MONITORS SHALL BE REQUIRED FOR EACH STRUCTURE. THE CONTRACTOR SHALL FURNISH AND INSTALL THE MONITORS AS DIRECTED BY THE ENGINEER. (SEE THE SPECIAL PROVISION FOR "CONTAINMENT AND DISPOSAL OF LEAD PAINT CLEANING RESIDUES".)

CLEANING AND PAINTING OF EXISTING STRUCTURAL STEEL SHALL BE AS SPECIFIED IN THE SPECIAL PROVISION FOR "CLEANING AND PAINTING EXISTING STEEL STRUCTURES" AND AS SPECIFIED BELOW.

- a) ALL EXISTING STRUCTURAL STEEL, (INCLUDING BEAMS/GIRDERS, DIAPHRAGMS, CROSS/LATERAL FRAMING, STEEL COMPONENTS OF BEARINGS, DRAINS, ANGLE BRACKETS, STEEL HANDRAILS (WHEN PRESENT) SHALL BE CLEANED PER THE REQUIREMENTS OF "NEAR WHITE BLAST CLEANING - SSPC-SP-10".
- b) ALL EXISTING STRUCTURAL STEEL, (INCLUDING BEAMS/GIRDERS, DIAPHRAGMS, CROSS/LATERAL FRAMING, STEEL COMPONENTS OF BEARINGS, DRAINS, ANGLE BRACKETS, STEEL HANDRAILS (WHEN PRESENT) SHALL BE CLEANED PER THE REQUIREMENTS OF "PAINT SYSTEM 1-OZ/E/U".
  - 1) THE FINAL FINISH COAT FOR ALL INTERIOR STRUCTURAL STEEL SHALL BE "GRAY, MUNSELL NO. 5B 7/1".
  - 2) FINISH COAT FOR EXTERIOR FACE, BOTTOM FLANGE AND BEARING ASSEMBLIES OF THE FASCIA BEAMS SHALL BE "GREEN, MUNSELL NO. 7.5G 1/2".

THE CONTRACTOR SHALL BE REQUIRED TO SECURE WASTE CONTAINERS THAT REMAIN ON THE JOB SITE. THIS WILL ENTAIL THAT ALL WASTE CONTAINERS CAN NOT BE MOVED OR OPENED DURING NON-WORKING HOURS.

WORKING DAYS SHALL BE CHARGED UNTIL THE CONTRACTOR/SUBCONTRACTOR LISCENSED TO DISPOSE OF LEAD PAINT RESIDUES HAS REMOVED THE WASTE MATERIAL FROM THE JOB SITE ACCORDING TO ALL FEDERAL, STATE AND LOCAL LAWS AND ORDINANCES. IF THE LISCENSED CONTRACTOR OR SUBCONTRACTOR FAILS TO DISPOSE OF THE LEAD PAINT RESIDUES ON OR BEFORE THE SPECIFIED COMPLETION DATE, LIQUIDATED DAMAGES SHALL BE CHARGED PER CALENDAR DAY ACCORDING TO ARTICLE 108.09 OF THE STANDARD SPECIFICATIONS UNTIL SUCH TIME THAT ALL PAINT RESIDUE MATERIALS HAVE BEEN PROPERLY REMOVED AND DISPOSED OF.

**COMMITMENTS**

STATE OF ILLINOIS  
DEPARTMENT OF TRANSPORTATION  
DISTRICT THREE  
AS BUILT INFORMATION

STATE OF ILLINOIS  
DEPARTMENT OF TRANSPORTATION  
DISTRICT THREE

\_\_\_\_\_  
SUPERVISING CONSTRUCTION FIELD ENGINEER

PREPARED BY: \_\_\_\_\_  
DISTRICT STUDIES & PLANS ENGINEER

\_\_\_\_\_  
RESIDENT ENGINEER / TECHNICIAN

DATE: \_\_\_\_\_

START & END DATES  
OF CONSTRUCTION:

\_\_\_\_\_

INSPECTORS:

\_\_\_\_\_

\_\_\_\_\_

EXAMINED BY: \_\_\_\_\_  
DISTRICT CONSTRUCTION ENGINEER

\_\_\_\_\_  
DISTRICT MATERIALS ENGINEER

\_\_\_\_\_  
DISTRICT OPERATIONS ENGINEER

MODEL: Default  
FILE: \\nas101.pw.stateil.us\pub\baronon.dta\illinois.gov\PW\DOT\Documents\DOT\_Offices\District 3\Projects\0366L25\CADD\0366L25-cover.dgn

USER NAME = MARINIEJ	DESIGNED -	REVISED -
	DRAWN -	REVISED -
PLOT SCALE = 3.9370' / mm	CHECKED -	REVISED -
PLOT DATE = 10/15/2020	DATE -	REVISED -

**STATE OF ILLINOIS  
DEPARTMENT OF TRANSPORTATION**

**GENERAL NOTES**

SCALE: SHEET 1 OF 1 SHEETS STA. TO STA.

F.A.I. RTE.	SECTION	COUNTY	TOTAL SHEETS	SHEET NO.
180	(06-2HB-2)BP	BUREAU	9	2
CONTRACT NO. 66L25				
ILLINOIS FED. AID PROJECT				

CONSTRUCTION CODE  
 BRIDGE PAINTING  
 90% FED. 10% STATE  
 BRIDGE  
 0047  
 RURAL

CODE NO.	ITEM	UNIT	TOTAL QUANTITY	
67100100	MOBILIZATION	L SUM	1	1
70100207	TRAFFIC CONTROL AND PROTECTION, STANDARD 701402	EACH	2	2
70100450	TRAFFIC CONTROL AND PROTECTION, STANDARD 701201	L SUM	1	1
70107025	CHANGEABLE MESSAGE SIGN	CAL DA	28	28
70400100	TEMPORARY CONCRETE BARRIER	FOOT	325	325
70400200	RELOCATE TEMPORARY CONCRETE BARRIER	FOOT	675	675
70600250	IMPACT ATTENUATORS, TEMPORARY (NON- REDIRECTIVE), TEST LEVEL 3	EACH	2	2
70600350	IMPACT ATTENUATORS, RELOCATE (NON- REDIRECTIVE), TEST LEVEL 3	EACH	2	2
* 78008230	POLYUREA PAVEMENT MARKING TYPE I - LINE 6"	FOOT	540	540
* X0327980	PAVEMENT MARKING REMOVAL - WATER BLASTING	SQ FT	270	270
X2700001	TEMPORARY RUMBLE STRIPS (SPECIAL)	EACH	4	4
X5060601	CONTAINMENT AND DISPOSAL OF NON-LEAD PAINT CLEANING RESIDUES NO. 1	L SUM	1	1
X5067501	BRIDGE CLEANING AND PAINTING WARRANTY NUMBER 1	L SUM	1	1
Z0010501	CLEANING AND PAINTING STEEL BRIDGE NO. 1	L SUM	1	1

\*= SPECIALTY ITEM

MODEL: Default  
 FILE: h:\mhc\p\pub\harcour\dot\Documents\DOT\_Offices\harcour\Projects\66L25\CADD\66L25-cover.dgn

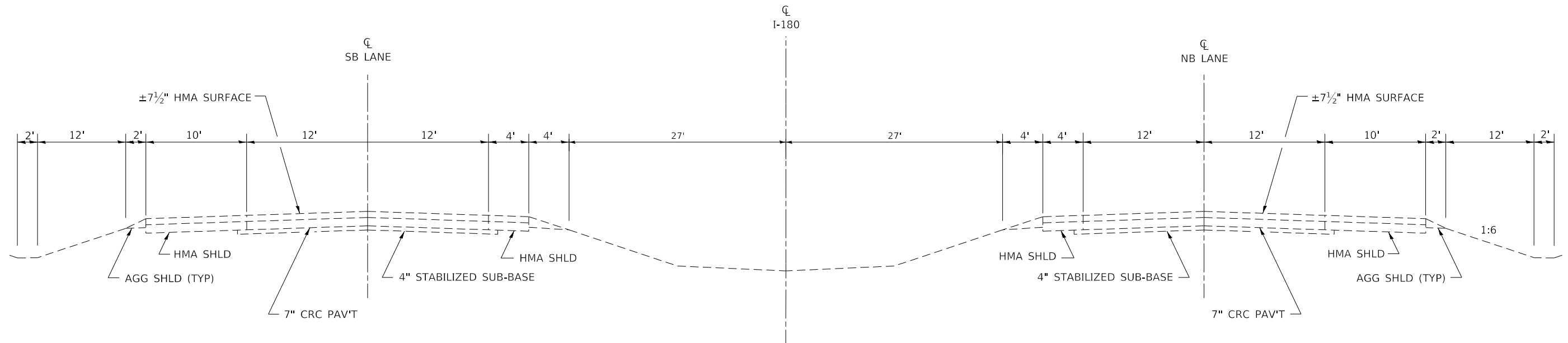
USER NAME = MARINIEJ	DESIGNED -	REVISED -
	DRAWN -	REVISED -
PLOT SCALE = 3.9370 ' / mm	CHECKED -	REVISED -
PLOT DATE = 10/15/2020	DATE -	REVISED -

STATE OF ILLINOIS  
 DEPARTMENT OF TRANSPORTATION

SUMMARY OF QUANTITIES

SCALE: SHEET 1 OF 1 SHEETS STA. TO STA.

F.A.I. RTE.	SECTION	COUNTY	TOTAL SHEETS	SHEET NO.
180	(06-2HB-2)BP	BUREAU	9	3
			CONTRACT NO. 66L25	
			ILLINOIS FED. AID PROJECT	



**TYPICAL SECTION  
I-180**

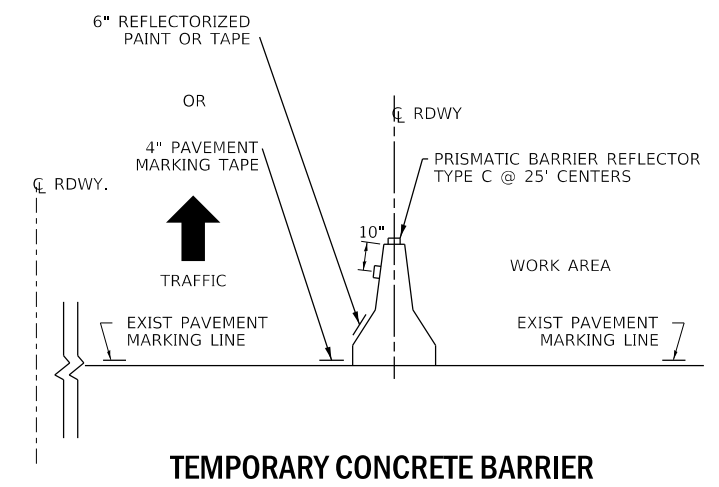
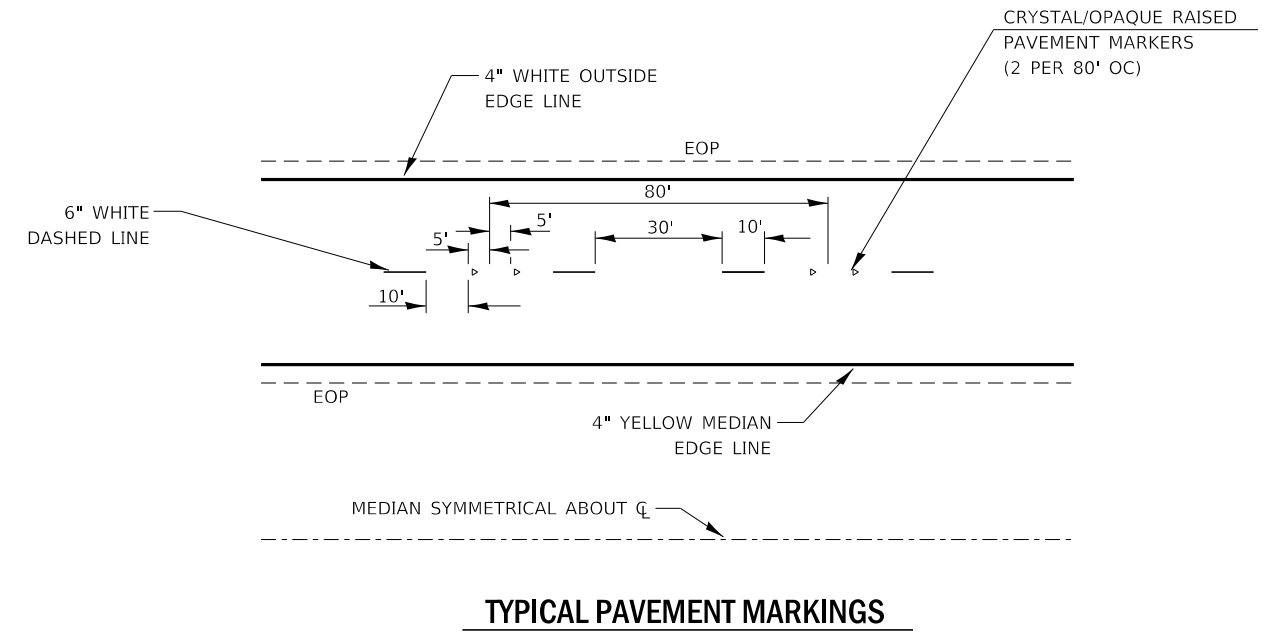
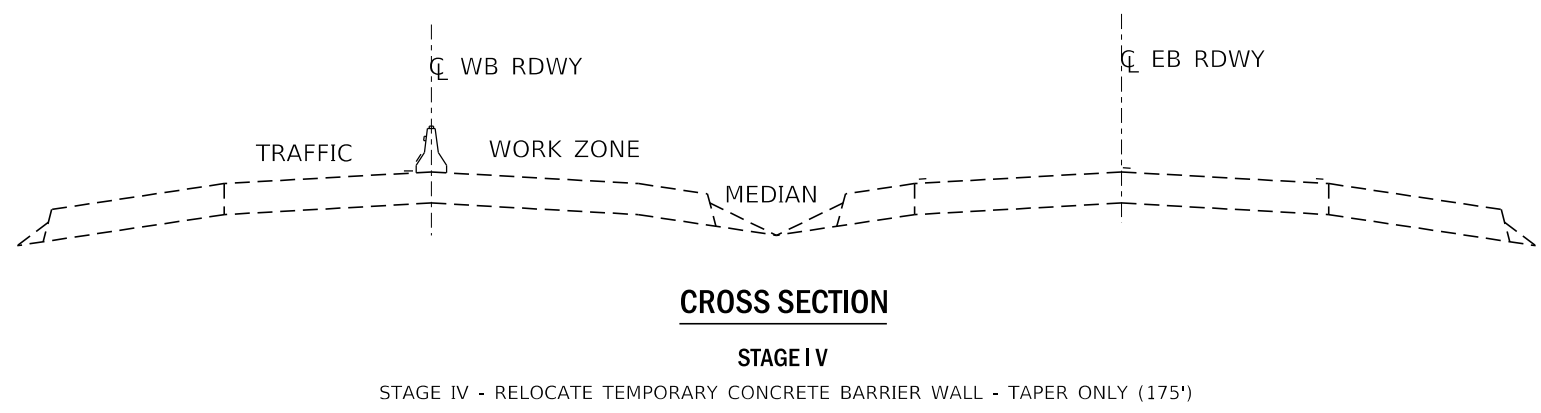
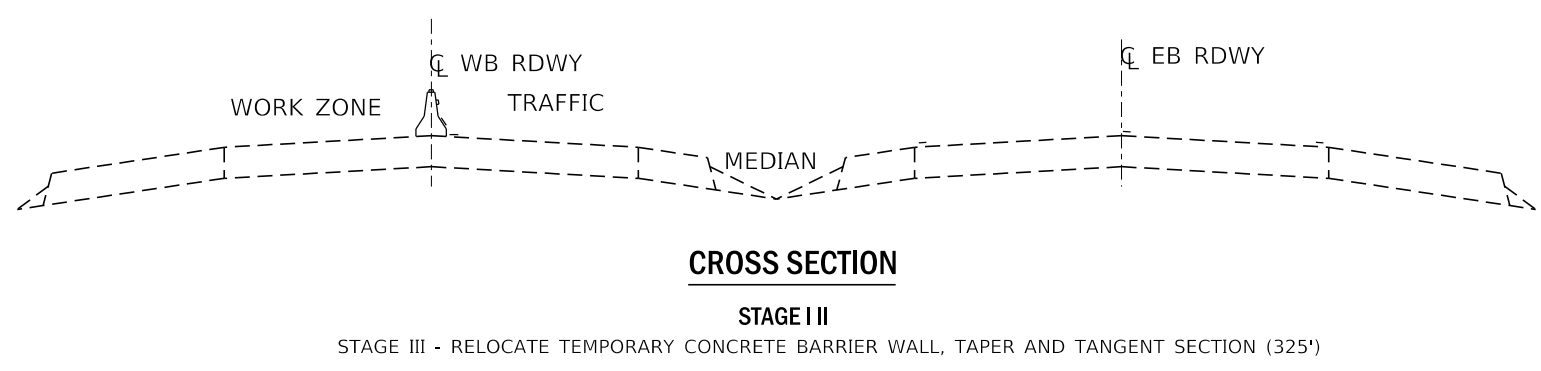
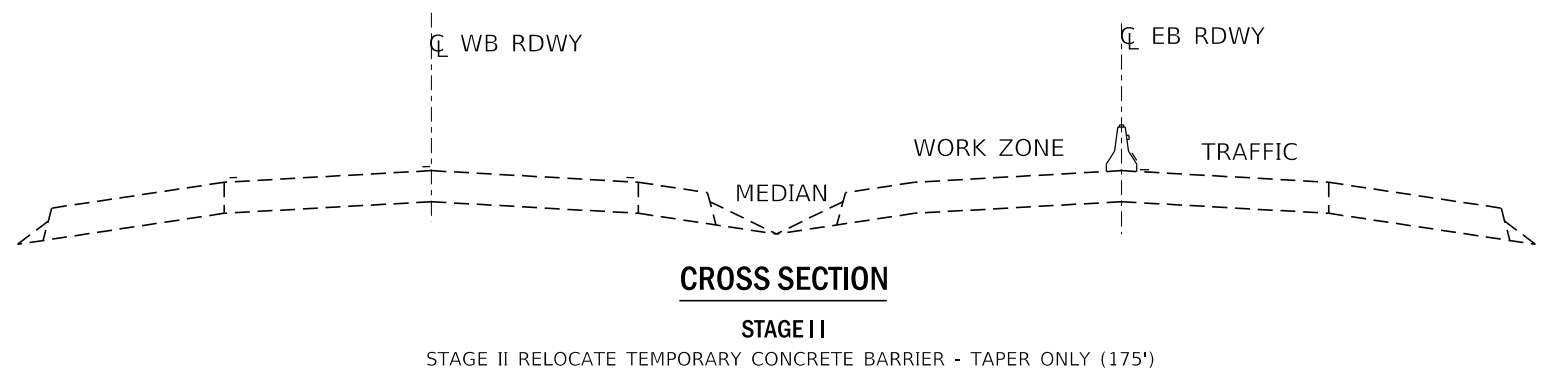
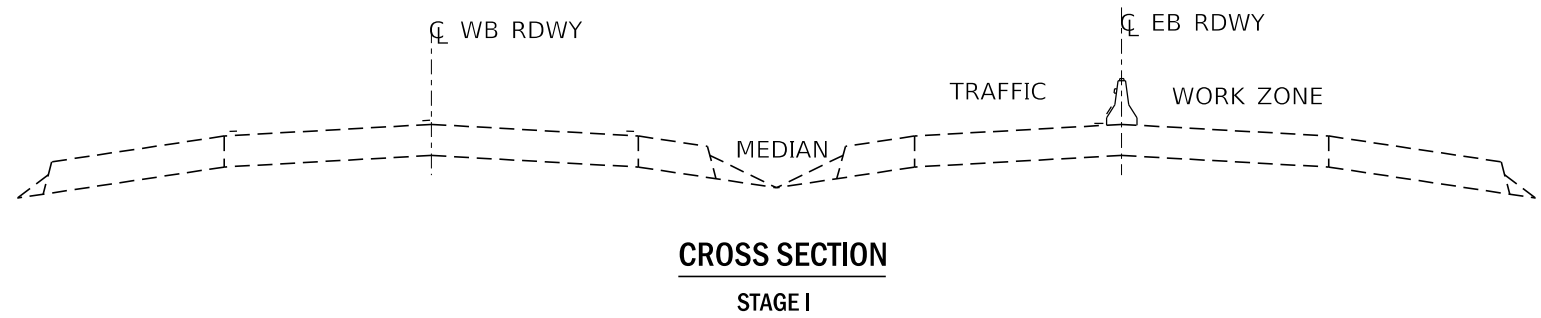
MODEL: Default  
FILE: h:\mhc\p\suplanroom\dat\illinois\p\w\DOT\Documents\DOT\_Offices\District\_3\Projects\I180\66L25\CADD\DATA\I180\66L25-cover.dgn

USER NAME = MARINIEJ	DESIGNED -	REVISED -
	DRAWN -	REVISED -
PLOT SCALE = 3.9370' / mm	CHECKED -	REVISED -
PLOT DATE = 10/15/2020	DATE -	REVISED -

**STATE OF ILLINOIS  
DEPARTMENT OF TRANSPORTATION**

<b>TYPICAL SECTIONS</b>	
SCALE:	SHEET 1 OF 1 SHEETS STA. TO STA.

F.A.I. RTE.	SECTION	COUNTY	TOTAL SHEETS	SHEET NO.
180	(06-2HB-2)BP	BUREAU	9	4
CONTRACT NO. 66L25				
ILLINOIS FED. AID PROJECT				



1. THE CONTRACTOR HAS THE OPTION OF USING EITHER THE LINE ON THE TEMPORARY CONCRETE BARRIER OR ON THE PAVEMENT.
2. THE COLOR OF THE REFLECTORS AND PAVEMENT/BARRIER MARKING LINE WILL VARY WITH STAGING AND SHALL MATCH THE EXISTING LINE IN THE WORK AREA.
3. THE COST OF THE REFLECTORS AND THE PAVEMENT/BARRIER MARKING LINE IS INCLUDED IN THE COST OF THE TEMPORARY CONCRETE BARRIER.

**GENERAL NOTES**

THESE DETAILS SHALL BE USED WHERE AT ANY TIME ANY VEHICLE, EQUIPMENT, WORKERS OR THEIR ACTIVITIES WILL ENCROACH ON THE PAVEMENT OR ON THE SHOULDER WITHIN 24 (600) OF THE EDGE OF PAVEMENT FOR DAYLIGHT OPERATION EXCEEDING ONE DAY AND WHERE TEMPORARY CONCRETE BARRIER IS UTILIZED.

THESE DETAILS MUST ALWAYS BE USED IN COMBINATION WITH STANDARD 701400 AND 701402.

WHEN WORK IS BEING PERFORMED IN THE LEFT LANE, THE SET UP WOULD BE A MIRROR IMAGE TO WHAT IS SHOWN.

TEMPORARY CONCRETE BARRIER SHALL BE ACCORDING TO STANDARD 704001.

MODEL: Default  
 FILE: \\blm01c.pw.state.il.us\pub\blm000001\dot\Documents\DOT\_Offices\blm01c\3\Projects\0366L25\CADD\0366L25-cover.dgn

USER NAME = MARINIEJ	DESIGNED -	REVISED -
PLOT SCALE = 3.9370' / mm	DRAWN -	REVISED -
PLOT DATE = 10/15/2020	CHECKED -	REVISED -
	DATE -	REVISED -

**STATE OF ILLINOIS**  
**DEPARTMENT OF TRANSPORTATION**

<b>STAGING DETAILS</b>	
SCALE:	SHEET 1 OF 1 SHEETS STA. TO STA.

F.A.I. RTE.	SECTION	COUNTY	TOTAL SHEETS	SHEET NO.
180	(06-2HB-2)BP	BUREAU	9	5
ILLINOIS FED. AID PROJECT			CONTRACT NO. 66L25	



B.M. #11-255' L.L. Sta. 532+70 R.R. spike in R.R.  
Elev. 652.688

ROUTE NO.	SECTION	COUNTY	TOTAL SHEETS	SHEET NO.
F.A.I.-180	06-2HB-2	BUREAU		224
FED. ROAD DIV. NO. 4		ILLINOIS	PROJECT I-180-7(4)10	

**GENERAL NOTES**

Course aggregate to be used in parapet handrails and end post must be absolutely free of coar, flint, limonite, lignite and soft sandstone. The concrete floor slab shall be finished in accordance with Article 51.19 of the Standard Specifications.

Permanent forms will not be permitted in forming the concrete floor. Slope Wall shall be reinforced with welded wire fabric 6" x 6" mesh, weighing 58# per 100 Sq. Ft.

All reinforcement bars shall be lapped 20 diameters unless otherwise shown.

All structural steel shall conform to A. S. T. M. specifications Designation A-36.

All welding shall conform to the Standard Specifications for Welded Highway and Railway Bridges of the American Welding Society, AWS D2.6-66.

All Field Connections Bolted, High Strength Steel Bolts 7/8", open holes 15/16" except as noted.

High Strength Steel Bolt Connections shall be in accordance with Article 54.5g of the Standard Specifications.

Anchor bolts shall be set before riveting diaphragms over supports.

Expansion guards shall be fabricated and erected in accordance with Article 51.13 (d) of the Standard Specifications.

The exposed surfaces of the expansion guard shall be given two shop coats of red lead paint, the contact surfaces shall be given one coat of red lead paint. Anchor studs shall not be painted.

Expansion guards are included in the quantity of Structural Steel. Estimated weight 2230 lbs.

Concrete piles at abutments shall be driven in holes prepared through the embankment in accordance with Article 60.9 (c) of the Standard Specifications.

The Contractor shall drive one (1) test pile in a permanent location at each of the following locations: At East Abutment and Pier.

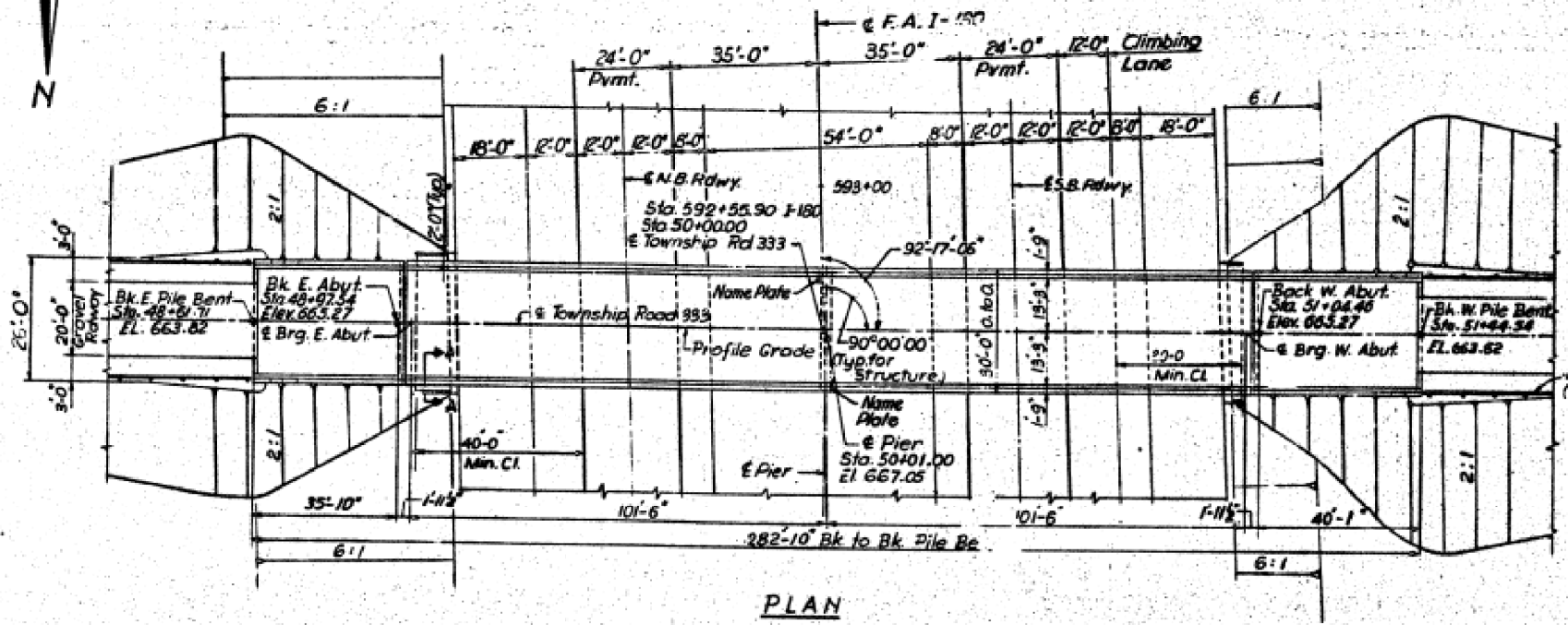
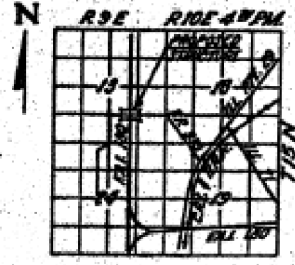
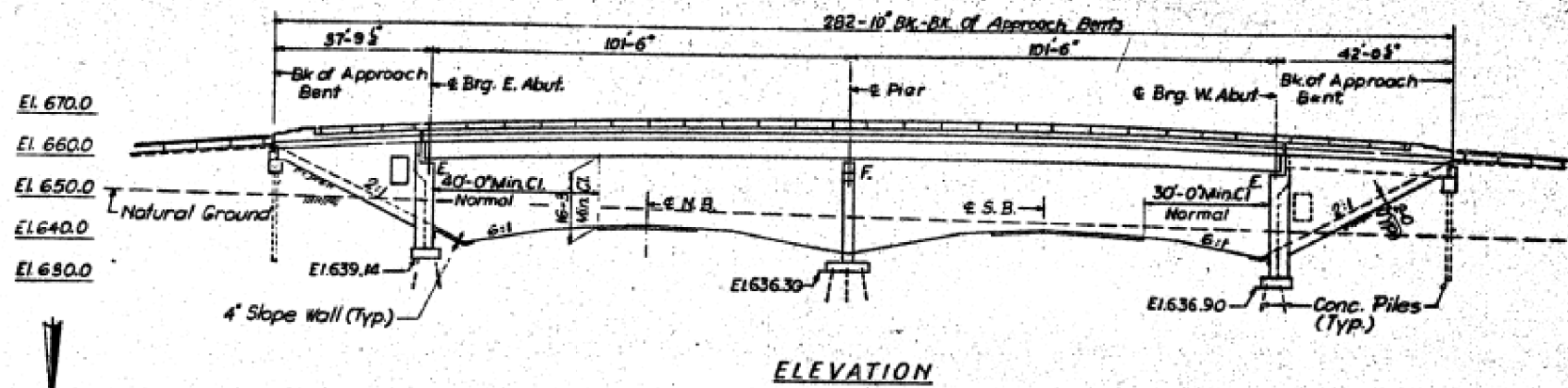
The test pile for each location must be driven before ordering the remainder of piles.

Excavation for portions of structures in the Embankments shall not be classified.

Future W. S. 25#/Sq. Ft.

All cross reference sheet numbers shown on the bridge plans are the numbers located in the lower right hand corner of each sheet.

Except as otherwise provided, all structural steel shall receive one shop coat of red lead paint and two field coats of paint. See Special Provisions for field paint.



**STATION 592+55.90**  
BUILT 196 BY  
STATE OF ILLINOIS  
FA.I RT.180 SEC.06-2HB-2  
FA.PROJ. I-180-7(4)0  
LOADING HS15

**NAME PLATE**  
See Std.213-1

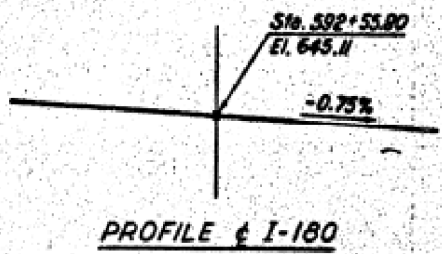
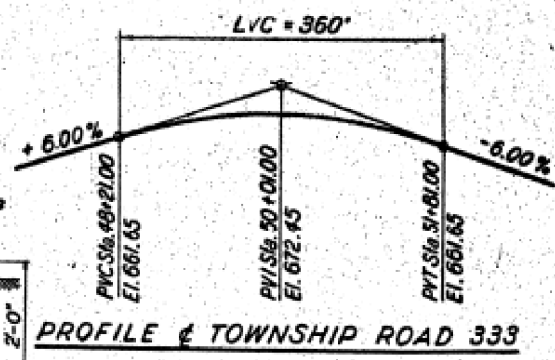
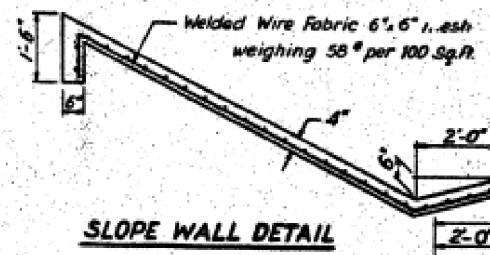
- DESIGN STRESSES**
- $f_c = 1,400$  psi (Super. & Sub.)
  - $f_s = 20,000$  psi (Reinf.)
  - $f_s = 20,000$  psi (Struct.)
  - $f_c = 75$  psi (Footings)
  - $n = 10$
- PRECAST PRESTRESSED BEAMS**
- $f_c = 5,000$  psi
  - $f_{cl} = 4,000$  psi
  - $f_s = 248,000$  psi (Strands)
  - $f_{sl} = 173,600$  psi (Strands)

**TOTAL BILL OF MATERIAL**

Item	Unit	Super.	Sub.	Total
Class A Excav. for Structures	Cu. Yds	—	231	231
Furnishing and Erecting Precast Prestressed Concrete I-Beams(36)	Lin. Ft.	304	—	304
Class X Concrete	Cu. Yds	273.1	260.6	533.7
Protective Coat	Sq. Yds	1070	—	1070
Furnish and Erect Structural Steel	Lbs.	174580	—	174580
Reinforcement Bars	Lbs.	60570	21390	81,960
Driving Concrete Piles	Lin. Ft.	—	1793	1793
Furnishing Concrete Piles	Lin. Ft.	—	1793	1793
Test Piles Concrete	Ea.	—	2	2
Name Plates	Ea.	—	2	2
Slope Wall 4"	Sq. Yds.	—	78	78
Aluminum Handrail	Lin. Ft.	526	—	526
Prefabricated Joint Sealer	Lin. Ft.	58	—	58

**LOADING HS 15 - 44**  
Allowable L.L. Deflection =  $\frac{1}{800}$

**APPROVED**  
FOR STRUCTURAL ADEQUACY ONLY  
*[Signature]*  
ENGINEER OF STRUCTURES  
8-10-67



DESIGNED BY RMR  
DRAWN BY JJ  
CHECKED BY RMR  
APPROVED BY KA

006-0128 SECTION A-A

BRIDGE NO. 6

STATE OF ILLINOIS  
DEPARTMENT OF PUBLIC WORKS & BLDGS.  
DIVISION OF HIGHWAYS

**GENERAL PLAN**

F.A.I. ROUTE 180  
UNDER TOWNSHIP ROAD 333  
STATION 592+55.90

F.A.I. RT. 180 BUREAU COUNTY SECTION 06-2HB-2

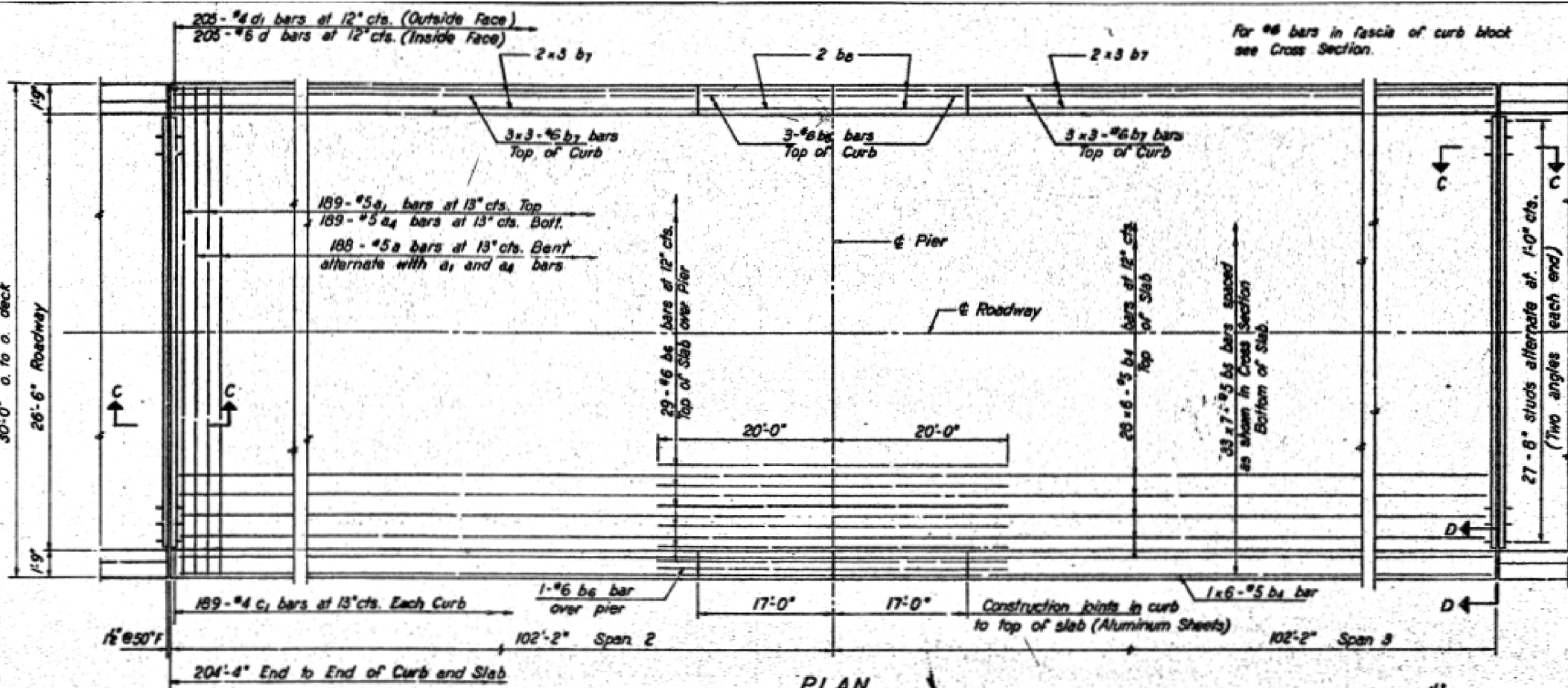
H. W. LOCHNER, INC.  
ENGINEERS

SHEET NO. 6

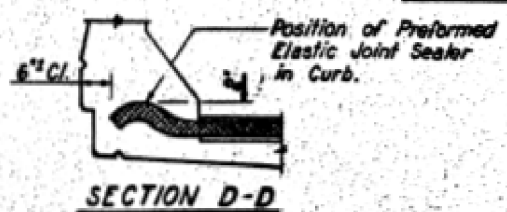
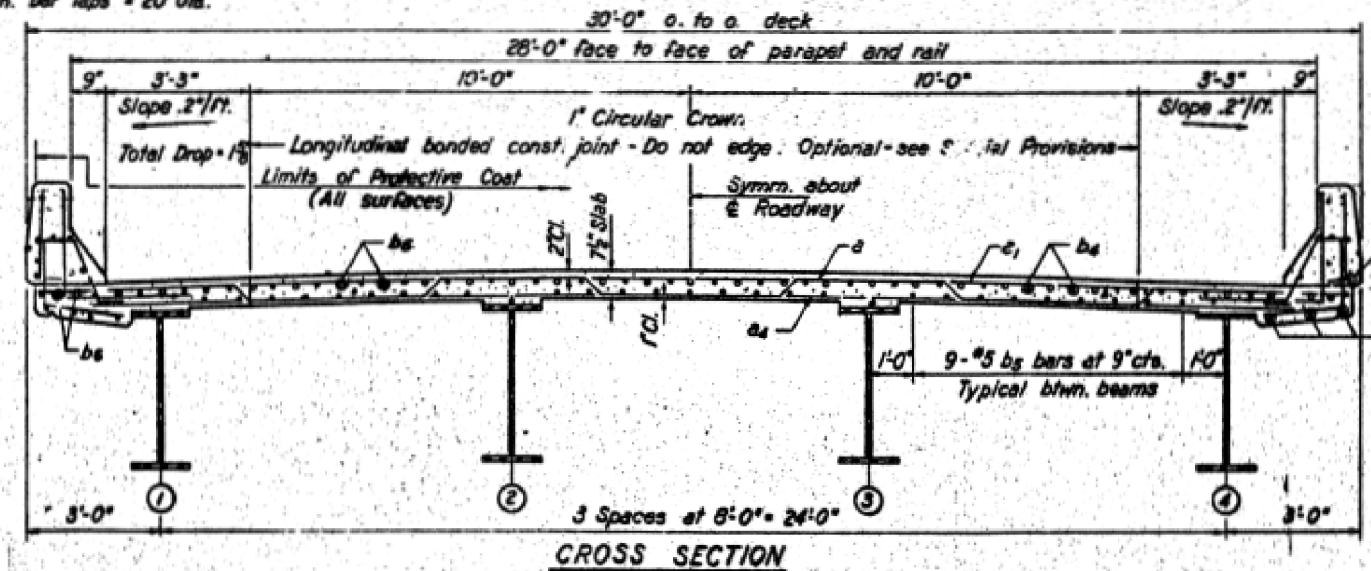
Reel 2-78  
*[Signature]*

DRAWING NO.	SECTION	COUNTY	TOTAL SHEETS	SHEET NO.
F. A. I. - 180	06-2HB-2	BUREAU	9	7

FED. ROAD DIV. NO. 4 ILLINOIS PROJECT

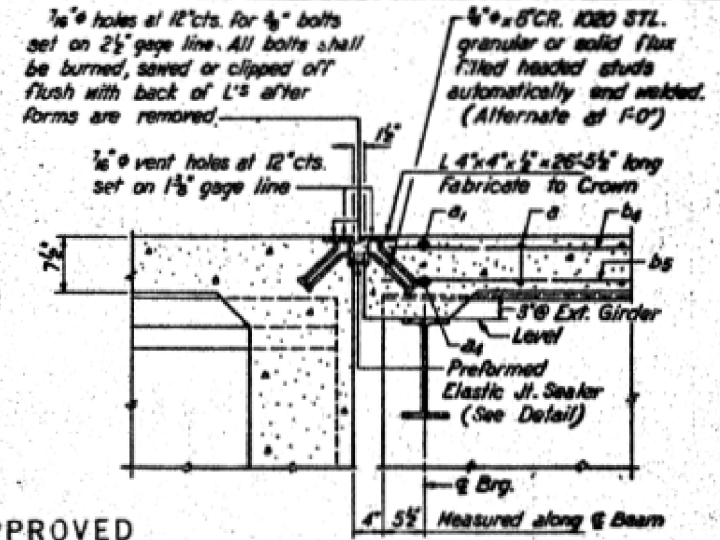


Note:  
Bars indicated thus 28-6-#5 e.t.c. indicates 28 lines of bars with 6 lengths per line. Min. bar laps = 20 dia.

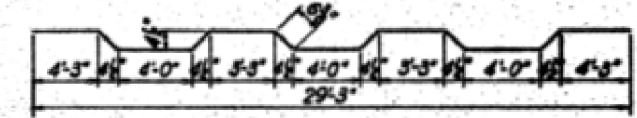


\* Weight of bearing assemblies with lead plates and anchor studs are included as structural steel. Est. Wt. = 4380 Lbs.  
The lengths and quantities of longitudinal reinforcement and Class X Concrete in parapets are not included in above quantities. See Sheet No. 4

For #6 bars in fascia of curb block see Cross Section.



APPROVED FOR STRUCTURAL ADEQUACY ONLY  
8-18-67

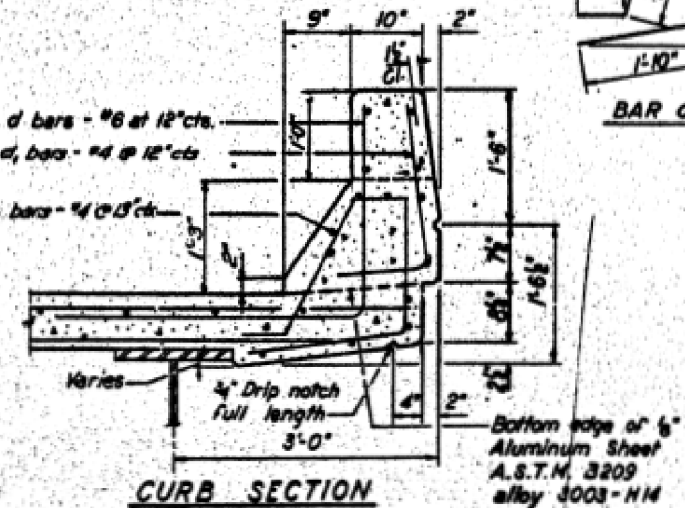
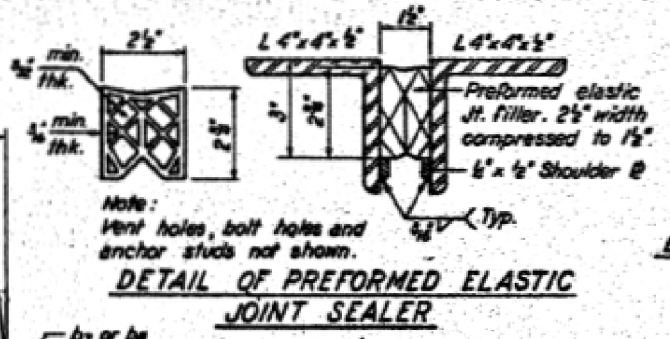


**BILL OF MATERIAL**

See Note X on Sh No. 2.

Bar No.	Size	Length	Shape
3a	#5	30'-3"	~
3a1	#5	29'-3"	~
3a4	#5	26'-6"	~
3b4	#5	35'-0"	~
3b5	#5	30'-7"	~
3b6	#6	40'-0"	~
3b7	#6	29'-4"	~
3b8	#6	16'-9"	~
3c1	#4	6'-1"	~
3d	#6	3'-9"	~
3d1	#4	2'-6"	~

Reinforcement Bars	Lbs.	41,760
Structural Steel	Lbs.	179,680
Class X Concrete	Cu. Yds.	174.2
Preformed Joint Sealer	Lin. Ft.	58
Protective Coat	Sq. Yds.	776



BRIDGE NO. 6

STATE OF ILLINOIS  
DEPARTMENT OF PUBLIC WORKS & BLDGS.  
DIVISION OF HIGHWAYS

**SUPERSTRUCTURE SPANS 2 AND 3**

F. A. I. ROUTE 180  
UNDER TOWNSHIP ROAD 333

STATION 995+55.90

F. A. I. RT. 180 BUREAU COUNTY SECTION 06-2HB-2

H. W. LOCHNER, INC.  
ENGINEERS  
CHICAGO, ILLINOIS

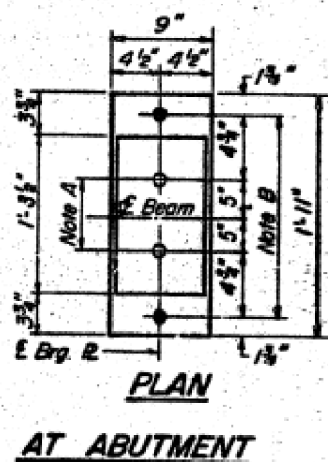
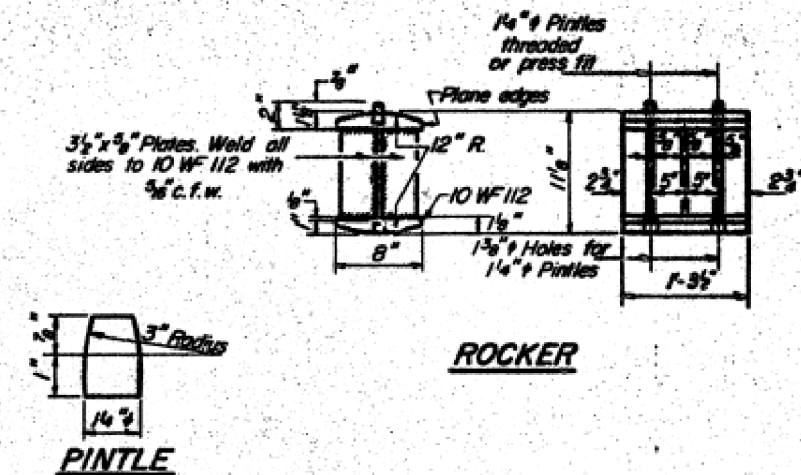
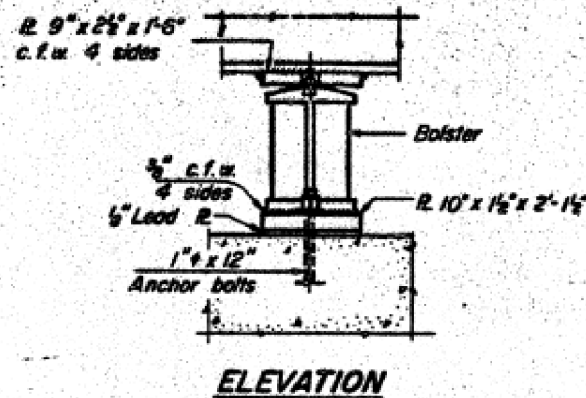
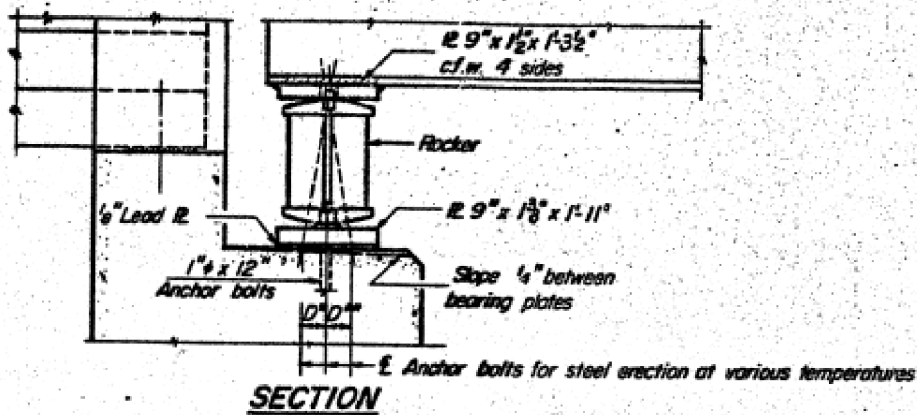
SHEET 3 OF 9





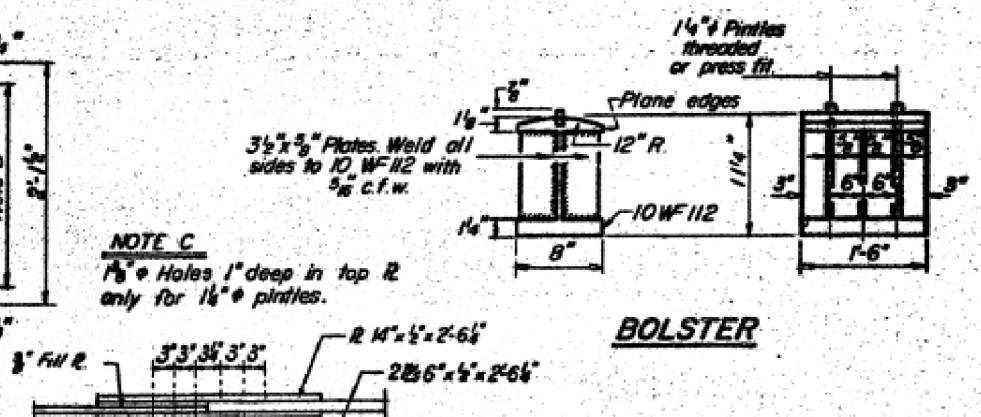
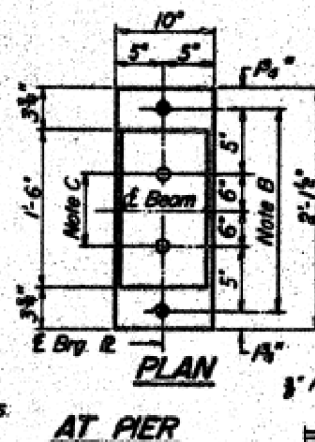


ROUTE NO.	SECTION	COUNTY	TOTAL SHEETS	SHEET NO.
F. A. I. - 180	06-2HB-2	BUREAU		231
FED. ROAD DIV. NO. 4		ILLINOIS	PROJECT	



TOP OF BEAM ELEVATIONS  
(Spans 1 and 4)

Location	Beam 1E4	Beam 2E3
± Brg. E. Appr. Bent	663.12	663.22
± Brg. E. Abut.	664.52	664.62
± Brg. W. Appr. Bent	662.92	663.02
± Brg. W. Abut.	664.52	664.62



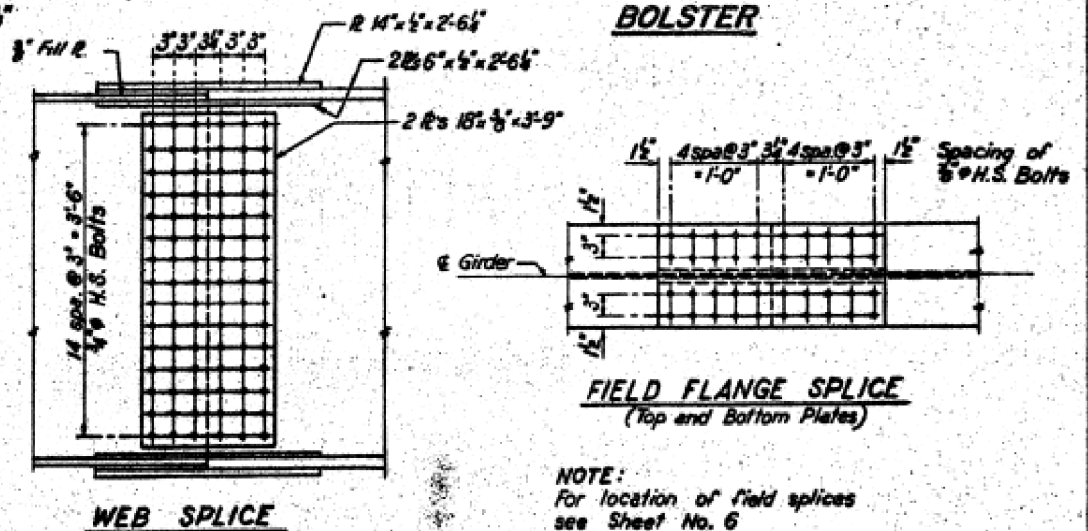
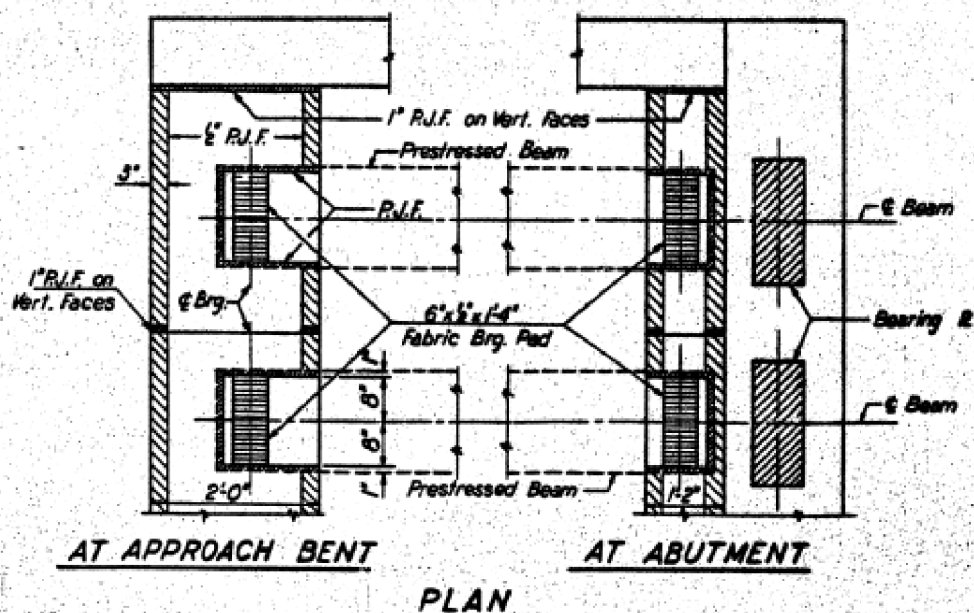
**NOTE A**  
1 3/8" Holes - 1" deep in top R.  
for pindles Thread or press fit  
pindles into bottom R.

**NOTE B**  
1 1/2" Holes for 1" anchor bolts.  
2 1/2" x 2 1/2" x 5/8" R. Washers  
under nut.

**NOTE C**  
1 3/8" Holes 1" deep in top R.  
only for 1/4" pindles.

**NOTES ON SETTING OF ANCHOR BOLTS AT EXP. BRGS.**

- a)  $D^*$  (Side of brg away from fixed brg.)  
 $D^* = \frac{1}{8}$ " per each 100' of expansion for every 15° fall below the normal temp. of 50°F.
- $D^{**}$  (Side of brg. toward fixed brg.)  
 $D^{**} = \frac{1}{8}$ " per each 100' of expansion for every 15° rise above the normal temp. of 50°F.
- b) After beams have been erected and dimensions  $D^*$  or  $D^{**}$  determined, holes shall be drilled and anchor bolts shall be grouted in place. All fixed anchor bolts may be built into the masonry.



APPROVED  
FOR STRUCTURAL ADEQUACY ONLY  
8-18-67

BRIDGE NO. 6

STATE OF ILLINOIS  
DEPARTMENT OF PUBLIC WORKS & BLDGS.  
DIVISION OF HIGHWAYS  
BEARING DETAILS  
F. A. I. ROUTE 180  
UNDER TOWNSHIP ROAD 333  
STATION 592+55.90  
F. A. I. RT. 180 BUREAU COUNTY SECTION 06-2HB-2  
H. W. LOCHNER, INC.  
ENGINEERS

DESIGNED BY S.F.  
DRAWN BY T.L.  
CHECKED BY S.F.  
APPROVED BY K.A.

USER NAME = MARINEJ	DESIGNED -	REVISED -	F.A.I. RTE.	SECTION	COUNTY	TOTAL SHEETS	SHEET NO.
PLOT SCALE = 3.9370' / mm	DRAWN -	REVISED -	180	(06-2HB-2)BP	BUREAU	9	9
PLOT DATE = 10/15/2020	CHECKED -	REVISED -	CONTRACT NO. 66L25				
DATE -	REVISED -		ILLINOIS FED. AID PROJECT				

STATE OF ILLINOIS  
DEPARTMENT OF TRANSPORTATION

EXISTING STRUCTURE PLANS FOR STRUCTURE NO. 006-0128  
"FOR INFORMATION ONLY"

SCALE: SHEET 4 OF 4 SHEETS STA. TO STA.