

STATE OF ILLINOIS
DEPARTMENT OF TRANSPORTATION

F.A. RTE.	SECTION	COUNTY	TOTAL SHEETS	SHEET NO.
VAR	D7 BRIDGE PAINTING 2021-2	ILLINOIS	23	1
		CONTRACT NO. 74A40		

* EFFINGHAM, LAWRENCE, AND WABASH COUNTIES

D-97-071-21

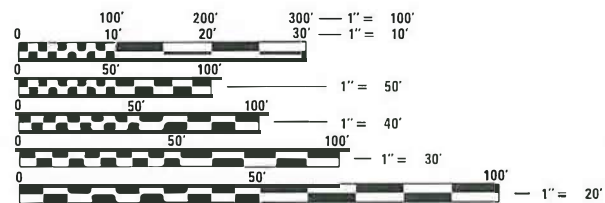
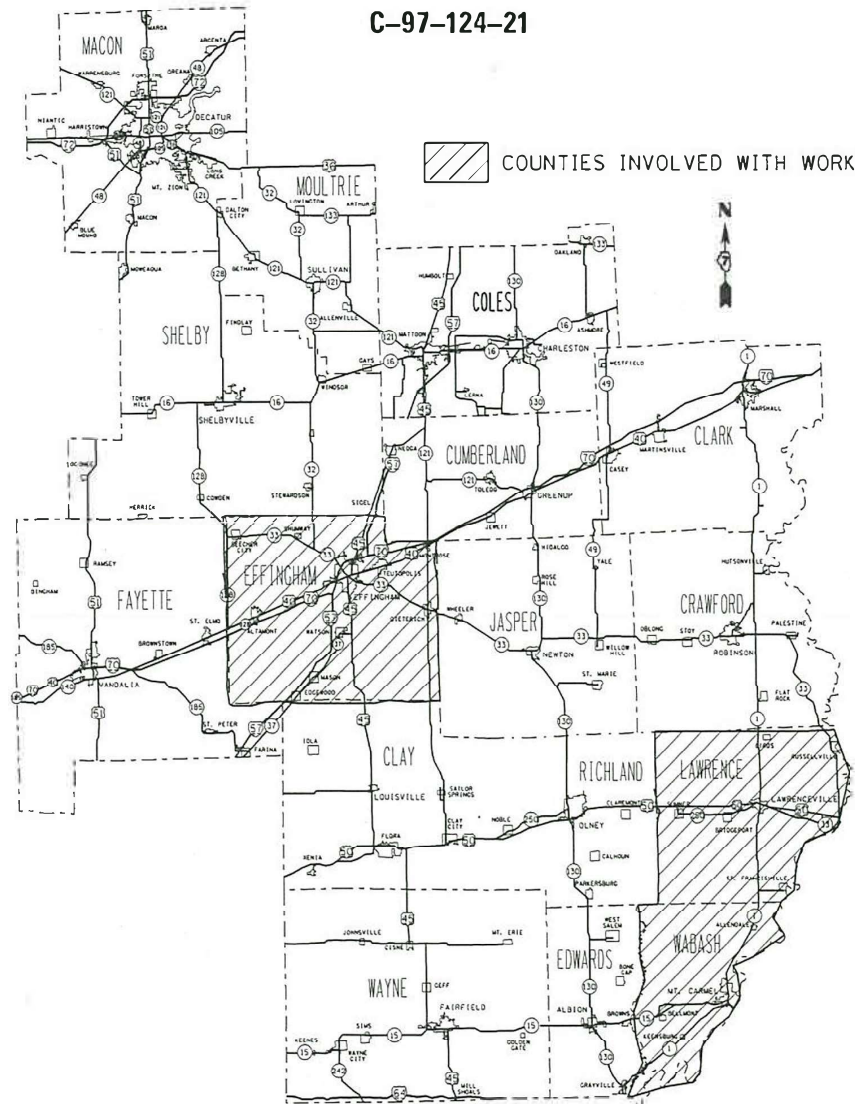


FOR INDEX OF SHEETS, SEE SHEET NO. 2

PROPOSED HIGHWAY PLANS

VARIOUS ROUTES
SECTION D7 BRIDGE PAINTING 2021-2
PROJECT STP-8DVX(616)
BRIDGE PAINTING
VARIOUS COUNTIES
(EFFINGHAM, LAWRENCE, & WABASH)

C-97-124-21



FULL SIZE PLANS HAVE BEEN PREPARED USING STANDARD ENGINEERING SCALES. REDUCED SIZED PLANS WILL NOT CONFORM TO STANDARD SCALES. IN MAKING MEASUREMENTS ON REDUCED PLANS, THE ABOVE SCALES MAY BE USED.

J.U.L.I.E.
JOINT UTILITY LOCATION INFORMATION FOR EXCAVATORS
1-800-892-0123
OR 811

PROJECT ENGINEER TOM RONAN
PROJECT MANAGER TOM RONAN
PHONE NUMBER (217)-342-8320
CONTRACT NO. 74A40

STATE OF ILLINOIS
DEPARTMENT OF TRANSPORTATION

SUBMITTED October 27, 2020

Jeffrey P. Myer
REGIONAL ENGINEER

December 4, 2020

Scott A. Elk
ENGINEER OF DESIGN AND ENVIRONMENT

December 4, 2020

James J. Gu
DIRECTOR OF HIGHWAYS PROJECT IMPLEMENTATION 13

PRINTED BY THE AUTHORITY
OF THE STATE OF ILLINOIS

INDEX OF SHEETS

SHEET NO.	ITEM
1	COVER SHEET
2	INDEX OF SHEETS & GENERAL NOTES
3	LOCATION DESCRIPTIONS
4	SUMMARY OF QUANTITIES
5-7	LOCATION MAP
8-23	EXISTING STRUCTURE PLANS

THE FOLLOWING STANDARDS ARE A PART OF THESE PLANS AND ARE INCLUDED AFTER SHEET NO. 23:

STD. NO.	DESCRIPTION
00001-08	STANDARD SYMBOLS, ABBREVIATIONS AND PATTERNS
701001-02	OFF-ROAD OPERATIONS, 2L2W, 15' MINIMUM AWAY FROM PAVEMENT EDGE
701006-05	OFF-ROAD OPERATIONS, 2L2W, 15' AWAY TO EDGE OF PAVEMENT
701101-05	OFF-ROAD OPERATIONS, MULTI-LANE, LESS THAN 15' TO EDGE OF PAVEMENT
701106-02	OFF-ROAD OPERATIONS, MULTI-LANE, MORE THAN 15' AWAY
701201-05	LANE CLOSURE, 2L2W, DAY ONLY
701400-10	APPROACH TO LANE CLOSURE, FREEWAY/EXPRESSWAY
701401-12	LANE CLOSURE, FREEWAY/EXPRESSWAY
701423-10	LANE CLOSURE, FREEWAY/EXPRESSWAY, WITH BARRIER
701901-08	TRAFFIC CONTROL DEVICES
704001-08	TEMPORARY CONCRET BARRIER
701402-12	LANE CLOSURE, FREEWAY/EXPRESSWAY, WITH BARRIER

GENERAL NOTES

THE PROPOSED PROJECT IS LOCATED AT 5 LOCATIONS ON VARIOUS ROUTES IN VARIOUS COUNTIES IN DISTRICT 7.

THE WORK INCLUDED IN THIS SECTION CONSISTS OF CLEANING AND PAINTING THE BRIDGES AS SPECIFIED IN THE PLANS AND SPECIAL PROVISIONS.

THE STRUCTURAL STEEL SHALL BE CLEANED AND PAINTED AS SPECIFIED IN THE PLANS AND THE SPECIAL PROVISIONS.

ALL DECK DRAINS SHALL BE PAINTED ACCORDING TO THE REQUIREMENTS OF PAINT SYSTEM 1 - OZ/E/U. ANY DAMAGE CAUSED BY THE CONTRACTOR SHALL BE REPAIRED AT THEIR OWN EXPENSE AND NO ADDITIONAL COMPENSATION WILL BE ALLOWED.

ONLY STRUCTURAL STEEL IS TO BE PAINTED. ALL OTHER SURFACES WILL BE PROTECTED FROM BEING PAINTED. ALL PAINT AND OVERSPRAY WILL BE REMOVED AT THE CONTRACTOR'S EXPENSE.

THE SSPC QP1 AND QP2 PAINTING CONTRACTOR CERTIFICATION WILL BE REQUIRED FOR THIS PROJECT.

EASTERN ILLINOIS RAILROAD REQUIRES \$5 MILLION IN POLLUTION LIABILITY COVERAGE IN ADDITION TO THE RAILROAD PROTECTIVE LIABILITY INSURANCE COVERAGES INDICATED IN THE STANDARD SPECIFICATIONS. THE COST OF THIS ADDITIONAL COVERAGE WILL NOT BE PAID FOR SEPARATELY BUT SHALL BE INCLUDED IN THE LUMP SUM UNIT PRICE FOR RAILROAD PROTECTIVE LIABILITY INSURANCE.

REV. - MS

EFFINGHAM, LAWRENCE, & WABASH COUNTIES

MODEL: Default
FILE NAME: P:\pjancom.dct\illinois.gov\PWD\DOT\Documents\DOT - Offices\District 7\Project\7440\CAD\data\CAD\sheet\07440-818-gensheet.dgn

USER NAME = steffenmk	DESIGNED -	REVISED -	STATE OF ILLINOIS DEPARTMENT OF TRANSPORTATION	INDEX OF SHEETS AND GENERAL NOTES			F.A. RTE.	SECTION	COUNTY	TOTAL SHEETS	SHEET NO.	
	DRAWN -	REVISED -					VAR.	D7 BRIDGE PAINTING 2021-2	*	23	2	
PLOT SCALE = 100.0000' / in.	CHECKED -	REVISED -		SCALE:	SHEET	OF	SHEETS	STA.	TO	STA.	CONTRACT NO. 74A40	
PLOT DATE = 10/29/2020	DATE -	REVISED -		ILLINOIS FED. AID PROJECT								

LOCATION #1

BRIDGE # 1
ROUTE: FAS 1710
MARKED: US 40
SECTION: L-3VB
STATION: 1321+33.29
STRUCTURE NUMBER: 025-0087

TYPE OF BRIDGES: Wide Flange I-Beams-3 Spans (6 Beams)
LOCATION: 2.25 Miles West of Effingham
FEATURE CARRIED/SPANNED: US 40 over the CSXT Railroad

COLOR OF THE FINISH COAT SHALL BE GRAY, MUNSELL 5B 7/1.

Cleaning and painting of the existing structural steel shall be as specified in the special provision for "Cleaning and Painting Existing Steel Structures". All structural steel, including beams, bearings and diaphragms, within 5' (measured along the beam) of the abutments and any expansion joints at piers shall be cleaned by SSPC-SP10- Near White Metal Blast Cleaning. The entire outside and bottom of the bottom flange of both fascia beams, for the entire length of the beams, shall be cleaned by SSPC-SP10- Near White Metal Blast Cleaning. This structure contains lead paint.

The designated areas cleaned per Near White Metal Blast Cleaning - SSPC-SP10 shall be painted according to the requirements of Paint System 1 - OZ/E/U.

Three air monitors will be required at this location.

LOCATION #2

BRIDGE # 2
ROUTE: FAP 783
MARKED: ILL 33
SECTION: (1-2VB)BR
STATION: 40+40.6
STRUCTURE NUMBER: 051-0032

TYPE OF BRIDGES: Wide Flange I-Beams-3 Spans (6 Beams)
LOCATION: 0.75 Miles South of US 50
FEATURE CARRIED/SPANNED: ILL 33 over the CSXT Railroad

COLOR OF THE FINISH COAT SHALL BE GRAY, MUNSELL 5B 7/1.

Cleaning and painting of the existing structural steel shall be as specified in the special provision for "Cleaning and Painting Existing Steel Structures". All structural steel, including beams, bearings and diaphragms, within 5' (measured along the beam) of the abutments and any expansion joints at piers shall be cleaned by SSPC-SP10- Near White Metal Blast Cleaning. The entire outside and bottom of the bottom flange of both fascia beams, for the entire length of the beams, shall be cleaned by SSPC-SP10- Near White Metal Blast Cleaning. This structure contains lead paint.

The designated areas cleaned per Near White Metal Blast Cleaning - SSPC-SP10 shall be painted according to the requirements of Paint System 1 - OZ/E/U.

No air monitors will be required at this location.

LOCATION #3

BRIDGE # 3
ROUTE: TR 208
MARKED: Unmarked
SECTION: 51-23HB-4
STATION: 686+02
STRUCTURE NUMBER: 051-0047

TYPE OF BRIDGE: Wide Flange I-Beams-4 Spans (5 Beams)
LOCATION: 1.75 Miles East of Junction of Illinois Route 1
FEATURE CARRIED/SPANNED: TR 208 over US Route 50

COLOR OF THE FINISH COAT SHALL BE GRAY, MUNSELL 5B 7/1.

Cleaning and painting of the existing structural steel shall be as specified in the special provision for "Cleaning and Painting Existing Steel Structures". All structural steel, including beams, bearings, and diaphragms shall be cleaned by SSPC-SP10- Near White Metal Blast Cleaning. This structure contains lead paint.

The designated areas cleaned per Near White Metal Blast Cleaning - SSPC-SP10 shall be painted according to the requirements of Paint System 1 - OZ/E/U.

Two air monitors will be required at this location.

LOCATION #4

BRIDGE # 4
ROUTE: FAS 1808
MARKED: Unmarked
SECTION: 1-V
STATION: 77+03.19
STRUCTURE NUMBER: 051-0057

TYPE OF BRIDGES: Wide Flange I-Beams-3 Spans (5 Beams)
LOCATION: East of Lawrenceville
FEATURE CARRIED/SPANNED: FAS 1808 over the CSXT Railroad

COLOR OF THE FINISH COAT SHALL BE REDDISH BROWN, MUNSELL 2.5YR 3/4.

Cleaning and painting of the existing structural steel shall be as specified in the special provision for "Cleaning and Painting Existing Steel Structures". All structural steel, including beams, bearings and diaphragms, within 10' (measured along the beam) of the abutments and any expansion joints at piers shall be cleaned by SSPC-SP10- Near White Metal Blast Cleaning. The entire outside and bottom of the bottom flange of both fascia beams, for the entire length of the beams, shall be cleaned by SSPC-SP10- Near White Metal Blast Cleaning. This structure does not contain lead paint.

The designated areas cleaned per Near White Metal Blast Cleaning - SSPC-SP10 shall be painted according to the requirements of Paint System 1 - OZ/E/U.

Three air monitors will be required at this location.

LOCATION #5

BRIDGE # 5
ROUTE: FAP 332
MARKED: ILL 1
SECTION: (13B-2)BR
STATION: 601+85
STRUCTURE NUMBER: 093-0001

TYPE OF BRIDGES: Wide Flange I-Beams-3 Spans (6 Beams)
LOCATION: 3 Miles North of Allendale
FEATURE CARRIED/SPANNED: ILL 1 over the Raccoon Creek

COLOR OF THE FINISH COAT SHALL BE INTERSTATE GREEN, MUNSELL 10B 3/6.

Cleaning and painting of the existing structural steel shall be as specified in the special provision for "Cleaning and Painting Existing Steel Structures". All structural steel, including beams, bearings and diaphragms, within 5' (measured along the beam) of the abutments and any expansion joints at piers shall be cleaned by SSPC-SP10- Near White Metal Blast Cleaning. The entire fascia beams shall be cleaned by SSPC-SP10- Near White Metal Blast Cleaning., for the entire length of the beams. This structure contains lead paint.

The designated areas cleaned per Near White Metal Blast Cleaning - SSPC-SP10 shall be painted according to the requirements of Paint System 1 - OZ/E/U.

One air monitor will be required at this location.

MODEL: Default
FILE: M:\GIS_Plan\pub\room\dat\illinois.gov\PWIDOT\Documents\DOT_Offices\Illinet\7\Project\74440\00DataCAD\sheet\74440-shc-schedule.dgn

* EFFINGHAM, LAWRENCE, AND WABASH COUNTIES

USER NAME = stefenmk	DESIGNED -	REVISED -	STATE OF ILLINOIS DEPARTMENT OF TRANSPORTATION	LOCATION DESCRIPTIONS				F.A. RTE.	SECTION	COUNTY	TOTAL SHEETS	SHEET NO.
DRAWN -	REVISED -	VAR.						D7 BRIDGE PAINTING 2021-2	*	23	3	
PLOT SCALE = 100,0000 ' / in.	CHECKED -	REVISED -		SCALE: SHEET OF SHEETS STA. TO STA.				CONTRACT NO. 74A40				
PLOT DATE = 10/27/2020	DATE -	REVISED -						ILLINOIS FED. AID PROJECT				

80% FED
20% STATE

VARIOUS COUNTIES

80% FED
20% STATE

VARIOUS COUNTIES

SUMMARY OF QUANTITIES			TOTAL QUANTITIES	CONSTRUCTION TYPE CODE		
CODE NO	ITEM	UNIT		0047 EFFINGHAM	0047 LAWRENCE	0047 WABASH
67100100	MOBILIZATION	L SUM	1	0.2	0.6	0.2
70100205	TRAFFIC CONTROL AND PROTECTION, STANDARD 701401	EACH	2		2	
70100207	TRAFFIC CONTROL AND PROTECTION, STANDARD 701402	EACH	2		2	
70400100	TEMPORARY CONCRETE BARRIER	FOOT	275		275	
70400200	RELOCATE TEMPORARY CONCRETE BARRIER	FOOT	825		825	
70600250	IMPACT ATTENUATORS, TEMPORARY (NON-REDIRECTIVE), TEST LEVEL 3	EACH	1		1	
70600350	IMPACT ATTENUATORS, RELOCATE (NON-REDIRECTIVE), TEST LEVEL 3	EACH	3		3	
X7010035	TRAFFIC CONTROL AND PROTECTION, STANDARD 701423 (SPECIAL)	EACH	1		1	
X7010101	TRAFFIC CONTROL AND PROTECTION, STANDARD 701201	EACH	4	1	2	1
X7040125	PINNING TEMPORARY CONCRETE BARRIER	EACH	120		120	
Z0007112	CONTAINMENT AND DISPOSAL OF LEAD PAINT CLEANING RESIDUES	L SUM	1	0.12	0.68	0.20

SUMMARY OF QUANTITIES			TOTAL QUANTITIES	CONSTRUCTION TYPE CODE		
CODE NO	ITEM	UNIT		0047 EFFINGHAM	0047 LAWRENCE	0047 WABASH
Z0007114	CONTAINMENT AND DISPOSAL OF NON-LEAD PAINT CLEANING RESIDUES	L SUM	1		1	
Z0010501	CLEANING AND PAINTING STEEL BRIDGE NO. 1	L SUM	1	1		
Z0010502	CLEANING AND PAINTING STEEL BRIDGE NO. 2	L SUM	1		1	
Z0010503	CLEANING AND PAINTING STEEL BRIDGE NO. 3	L SUM	1		1	
Z0010504	CLEANING AND PAINTING STEEL BRIDGE NO. 4	L SUM	1		1	
Z0010505	CLEANING AND PAINTING STEEL BRIDGE NO. 5	L SUM	1			1

MODEL: Default
 FILE: M:\MS_E_PlanRoom.dwg
 PROJECT: 7440\Documents\DOT_Offices\District 7\Projects\7440\DATA\CAD\Sheet\7440-514-S00.dgn

REV. - MS

* EFFINGHAM, LAWRENCE, AND WABASH COUNTIES

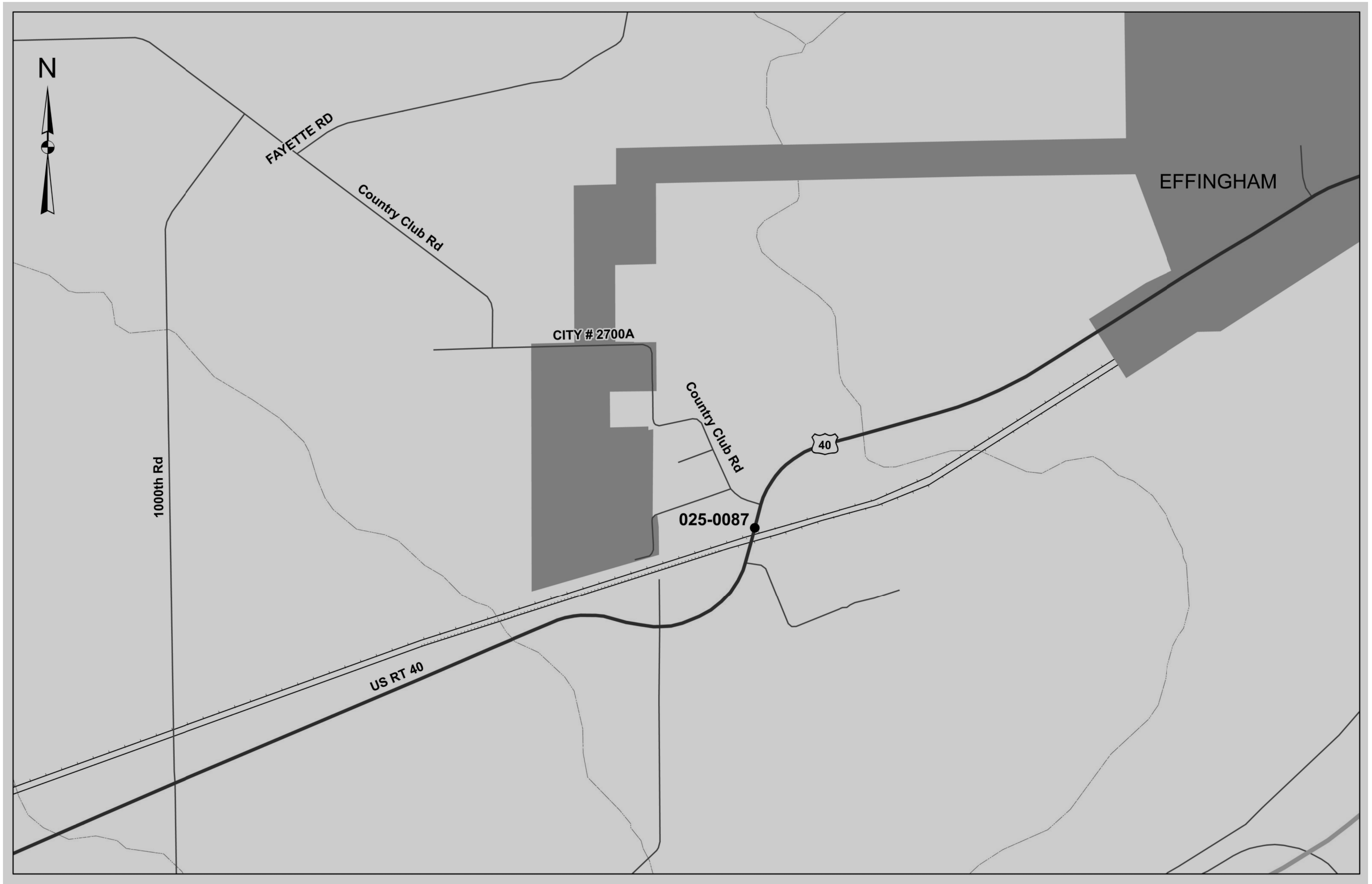
USER NAME = steffemk	DESIGNED -	REVISED -
	DRAWN -	REVISED -
PLOT SCALE = 100.0000 ' / in.	CHECKED -	REVISED -
PLOT DATE = 10/27/2020	DATE -	REVISED -

**STATE OF ILLINOIS
DEPARTMENT OF TRANSPORTATION**

SUMMARY OF QUANTITIES

SCALE: SHEET OF SHEETS STA. TO STA.

F.A. RTE.	SECTION	COUNTY	TOTAL SHEETS	SHEET NO.
VAR.	D7 BRIDGE PAINTING 2021-2	*	23	4
			CONTRACT NO. 74A40	
ILLINOIS FED. AID PROJECT				



MODEL: Default
 FILE: \\nas101.pwlab.com\data\illinois.gov\PI\DOT\Documents\DOT_Offices\District 7\Projects\74440\CADD\baCAD\sheet\0774440-shc.dwg

* EFFINGHAM, LAWRENCE, AND WABASH COUNTIES

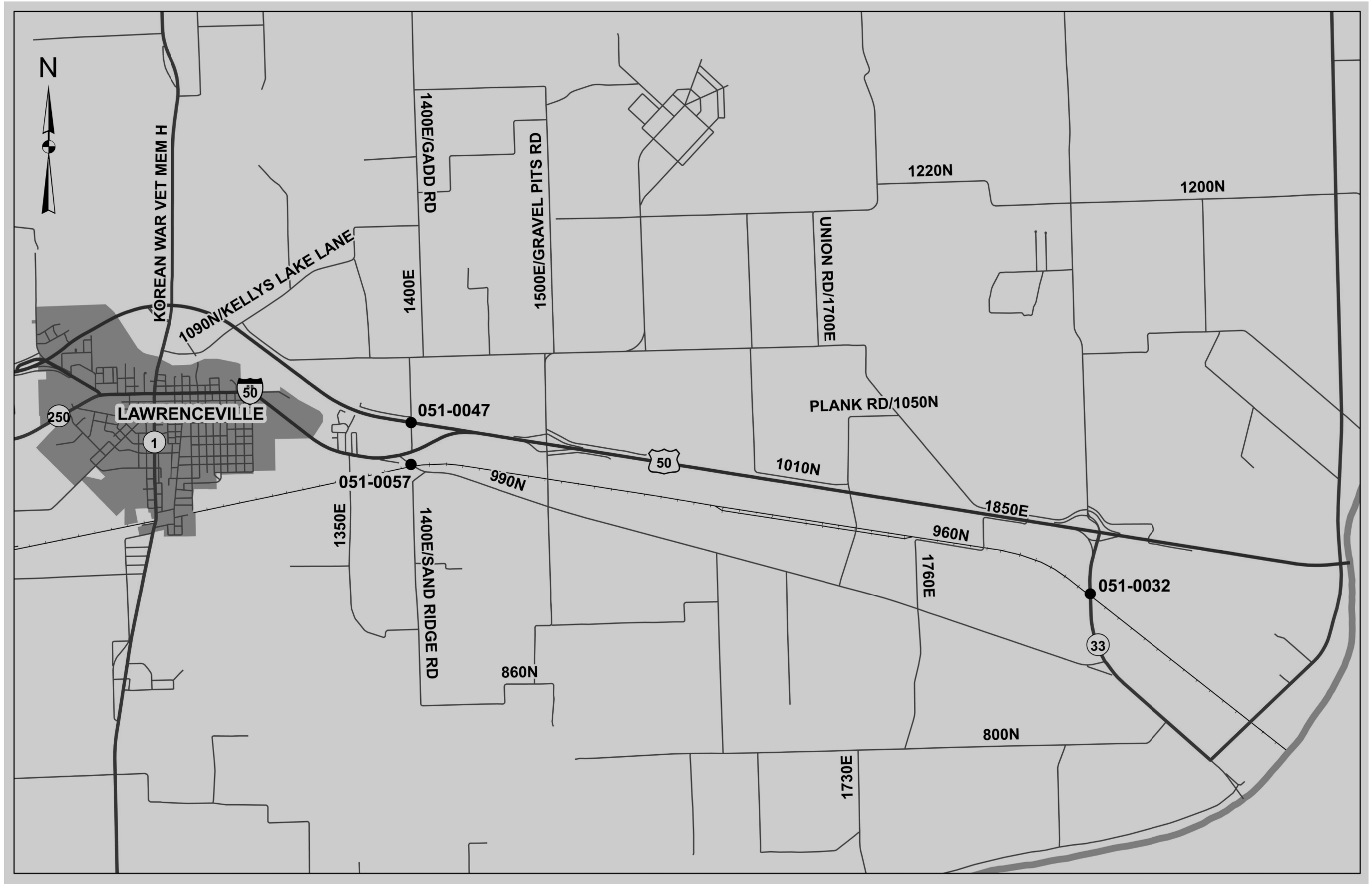
USER NAME = steffenmk	DESIGNED -	REVISED -
	DRAWN -	REVISED -
PLOT SCALE = 100,0000 ' / in.	CHECKED -	REVISED -
PLOT DATE = 10/27/2020	DATE -	REVISED -

STATE OF ILLINOIS
DEPARTMENT OF TRANSPORTATION

LOCATION MAP

SCALE: SHEET 1 OF 3 SHEETS STA. TO STA.

F.A. RTE.	SECTION	COUNTY	TOTAL SHEETS	SHEET NO.
VAR.	D7 BRIDGE PAINTING 2021-2	*	23	5
			CONTRACT NO. 74A40	
ILLINOIS FED. AID PROJECT				



MODEL: Default
 FILE: Model_C:\pub\baronm\ada\illinois\pwr\DOT\Documents\DOT_Offices\Dir\et 7\Project\74440\CADD\baCAD\sheet\074440-shc\plan.dgn

* EFFINGHAM, LAWRENCE, AND WABASH COUNTIES

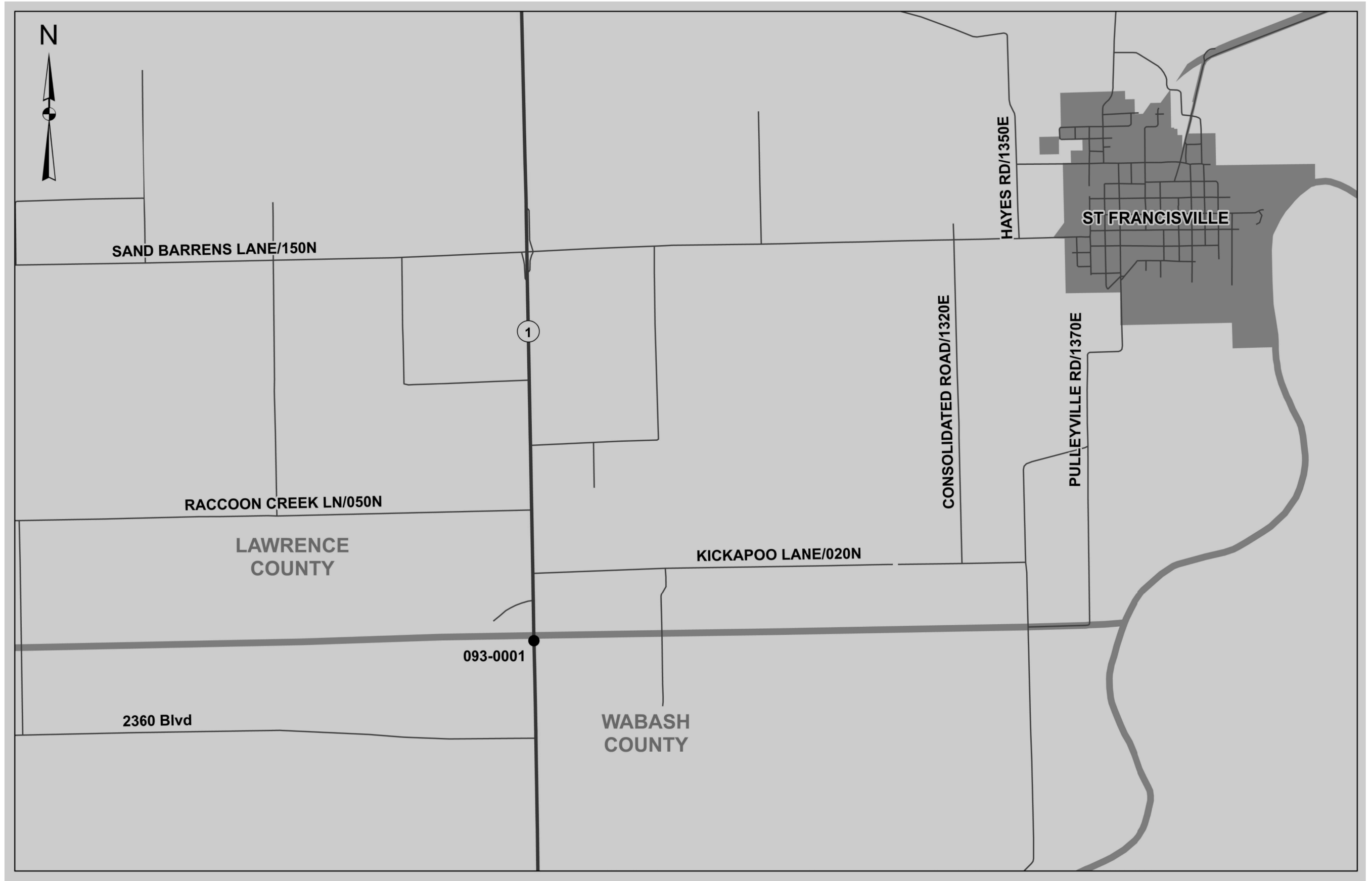
USER NAME = steffemk	DESIGNED -	REVISED -
	DRAWN -	REVISED -
PLOT SCALE = 100,0000' / in.	CHECKED -	REVISED -
PLOT DATE = 10/27/2020	DATE -	REVISED -

STATE OF ILLINOIS
DEPARTMENT OF TRANSPORTATION

LOCATION MAP

SCALE: SHEET 2 OF 3 SHEETS STA. TO STA.

F.A. RTE.	SECTION	COUNTY	TOTAL SHEETS	SHEET NO.
VAR.	D7 BRIDGE PAINTING 2021-2	*	23	6
			CONTRACT NO. 74A40	
		ILLINOIS	FED. AID PROJECT	



MODEL: Default
 FILE: Model_C:\pub\baronm.dwg
 PROJECT: R:\DOT\Documents\DOT_Offices\DOT\74440\CADD\baronm\74440-137.dwg

* EFFINGHAM, LAWRENCE, AND WABASH COUNTIES

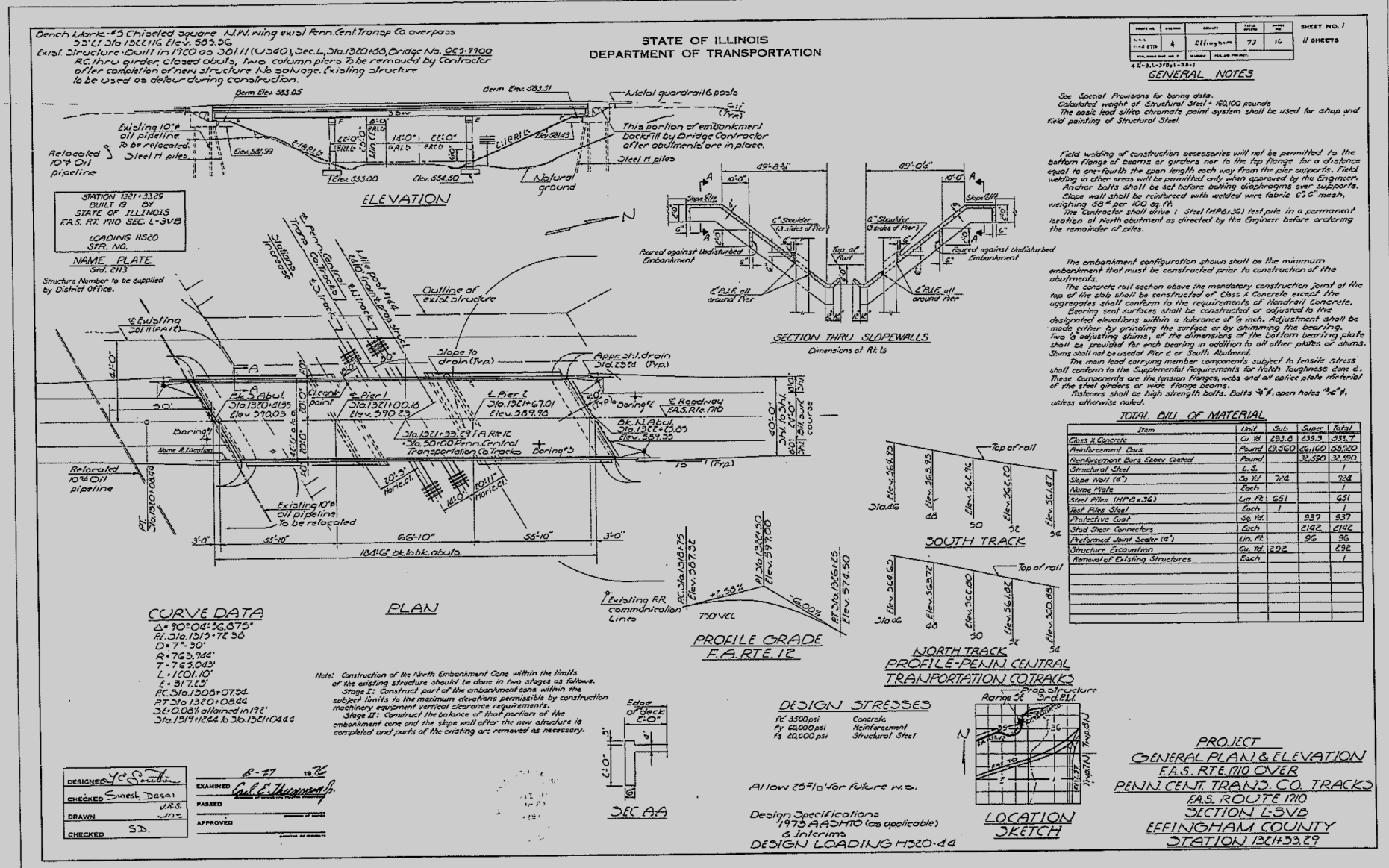
USER NAME = steffenmk	DESIGNED -	REVISED -
	DRAWN -	REVISED -
PLOT SCALE = 100,0000' / in.	CHECKED -	REVISED -
PLOT DATE = 10/27/2020	DATE -	REVISED -

STATE OF ILLINOIS
DEPARTMENT OF TRANSPORTATION

LOCATION MAP

SCALE: SHEET 3 OF 3 SHEETS STA. TO STA.

F.A. RTE.	SECTION	COUNTY	TOTAL SHEETS	SHEET NO.
VAR.	D7 BRIDGE PAINTING 2021-2	*	23	7
			CONTRACT NO. 74A40	
		ILLINOIS	FED. AID PROJECT	



MODEL: Default
FILE: \\nls01c:\pub\pubroom\da:\illinois\pww\DOT\Documents\DOT - Offices\Dist\ct 7\Projects\74440\CADD\Drawings\74440-08-Struct.dwg

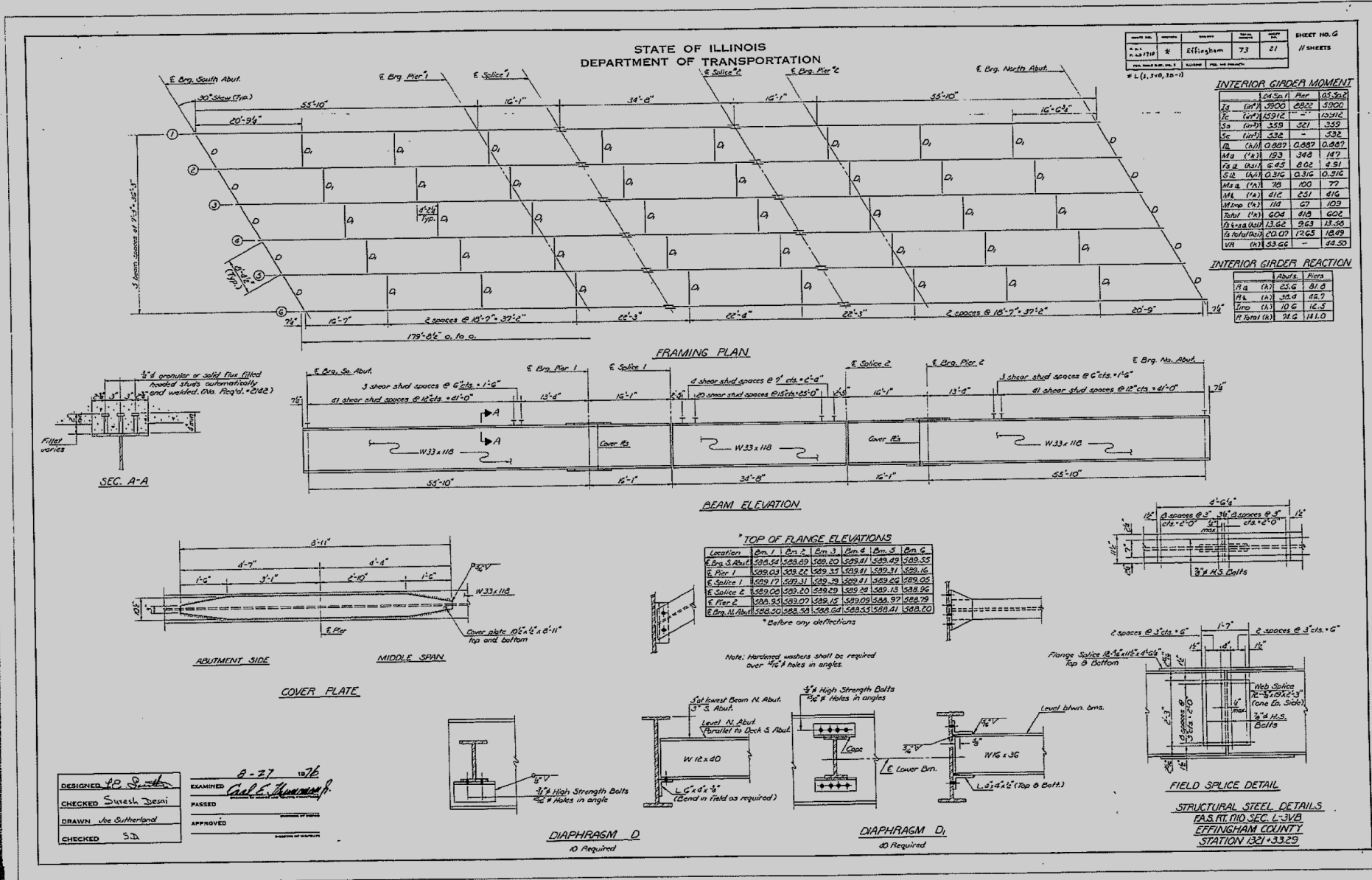
USER NAME = steffenk	DESIGNED -	REVISED -
	DRAWN -	REVISED -
PLOT SCALE = 100,0000' / in.	CHECKED -	REVISED -
PLOT DATE = 10/27/2020	DATE -	REVISED -

**STATE OF ILLINOIS
DEPARTMENT OF TRANSPORTATION**

EXISTING STRUCTURE PLANS			
025-0087			
SCALE:	SHEET 1	OF 3 SHEETS	STA. TO STA.

* EFFINGHAM, LAWRENCE, AND WABASH COUNTIES			
F.A. RTE.	SECTION	COUNTY	TOTAL SHEETS
VAR. D7 BRIDGE PAINTING 2021-2		*	23
			8
CONTRACT NO. 74A40			
ILLINOIS FED. AID PROJECT			

MODEL: Default
 FILE: \\blm01c-pub\pubroom.dca\illinois\pwr\DOT\Documents\IBOT - Offices\Dist\ct 7\Projects\74440\CADD\Drawings\74440-Struct\74440-Struct.dwg



DESIGNED: *JD Smith*
 CHECKED: *Smesh Desai*
 DRAWN: *Joe Sutherland*
 CHECKED: *SD*

EXAMINED: *B-27 10/76*
 PASSED: *Carl E. Hummer*
 APPROVED: _____

* EFFINGHAM, LAWRENCE, AND WABASH COUNTIES

USER NAME = steffemk	DESIGNED -	REVISED -
PLOT SCALE = 100,0000' / in.	CHECKED -	REVISED -
PLOT DATE = 10/27/2020	DATE -	REVISED -

**STATE OF ILLINOIS
DEPARTMENT OF TRANSPORTATION**

**EXISTING STRUCTURE PLANS
025-0087**

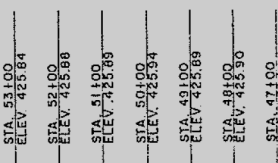
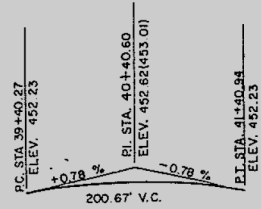
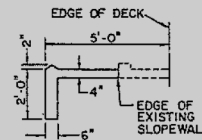
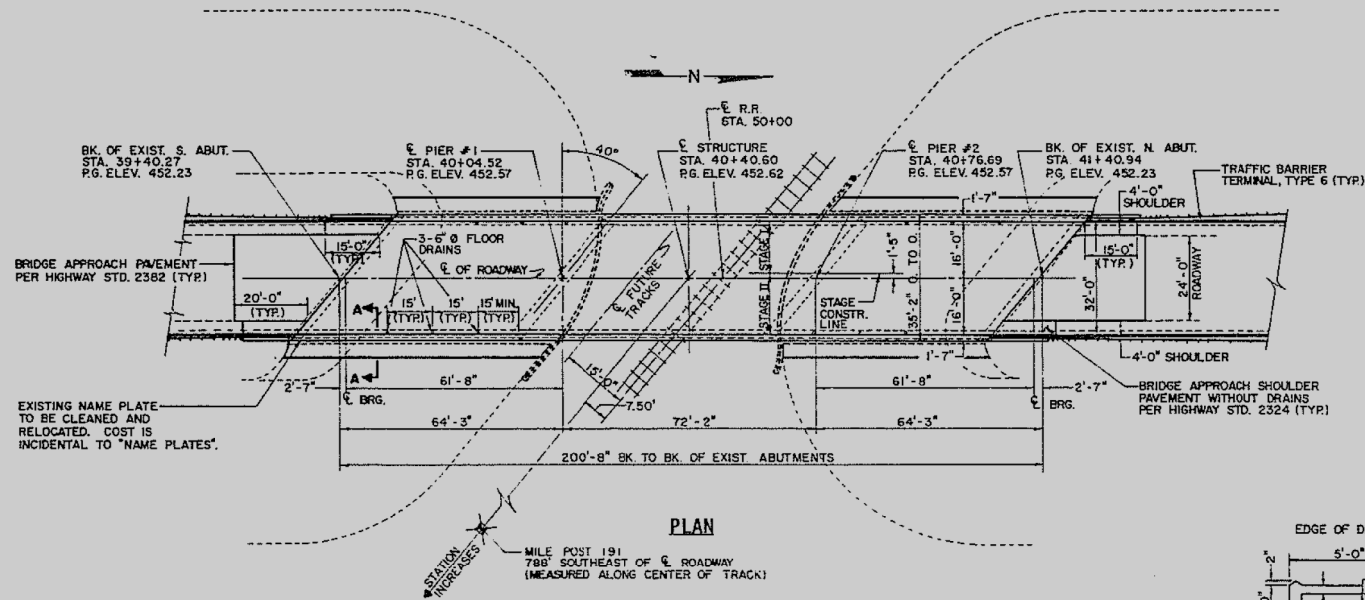
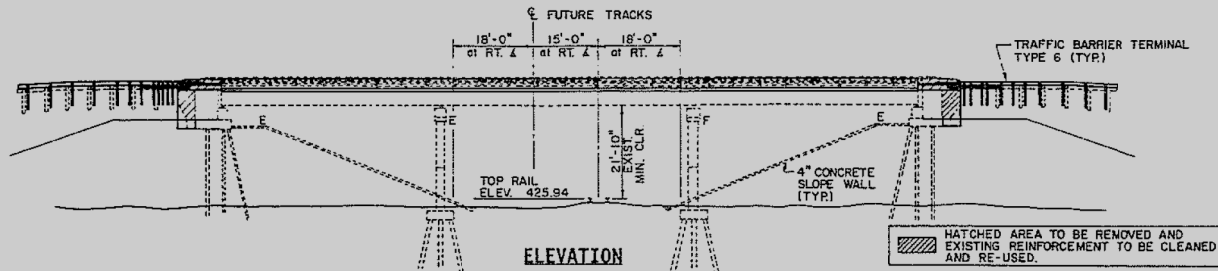
SCALE: SHEET 3 OF 3 SHEETS STA. TO STA.

F.A. RTE.	SECTION	COUNTY	TOTAL SHEETS	SHEET NO.
VAR. D7	BRIDGE PAINTING 2021-2	*	23	10
CONTRACT NO. 74A40				
ILLINOIS	FED. AID PROJECT			

BENCH MARK: TOP OF BOLT, N.E. COR. OF FLASHER LIGHT BASE 17' RT. STA. 40+21. ELEV. 425.56
 BENCH MARK: TOP OF BOLT, N.W. COR. RAILROAD SIGNAL POST, 468' EAST ALONG C.S.X.T. RAILROAD TRACKS. ELEV. 425.36

EXISTING STRUCTURE: S.N. 051-0032. BUILT IN 1959 AS A 3-SPAN RC DECK ON STEEL BEAMS SUPPORTED BY OPEN ABUTMENTS ON CONCRETE PILING, 40° LEFT AHEAD SKEW. THE PIERS ARE SUPPORTED BY TIMBER PILING. EXISTING WIDTH IS 36' FACE TO FACE OF SAFETY WALKS. LENGTH IS 200'-8" BACK TO BACK OF ABUTMENTS. THE EXISTING STRUCTURAL DECK SHALL BE REMOVED AND REPLACED. ROADWAY TRAFFIC TO BE MAINTAINED UTILIZING STAGE CONSTRUCTION, TO PERMIT ONE LANE TRAFFIC FLOW.

NO SALVAGE



STATION 40+40.60
 REBUILT BY
 STATE OF ILLINOIS
 F.A.P. RTE. 783 SEC. (1-2VB) BR
 LOADING HS20
 STR. NO. 051-0032
NAME PLATE
 (SEE HIGHWAY STD. NO. 2113)

APPROVED
 FOR REBUILT AND APPROVAL ONLY
Ralph E. Anderson
 Engineer in Charge and Signature

*PROJECT BHF-783(1)

"I CERTIFY THAT TO THE BEST OF MY KNOWLEDGE, INFORMATION AND BELIEF, THIS BRIDGE IS STRUCTURALLY ADEQUATE FOR THE DESIGN LOADING SHOWN ON THE PLANS. THE DESIGN IS AN ECONOMICAL ONE FOR THE STYLE OF STRUCTURE AND COMPLIES WITH REQUIREMENTS OF THE CURRENT 'AASHTO STANDARD SPECIFICATIONS FOR HIGHWAY BRIDGES'."

ELMER G. PYLE
 01-2783
 LICENSED
 STRUCTURAL
 ENGINEER
Elmer G. Pyle
 3-2-92
 ELMER G. PYLE
 CENTRALIA, ILLINOIS
 ILLINOIS LICENSED STRUCTURAL
 ENGINEER NO. 01-2783
 EXPIRES 11-30-92

LOADING HS20-44

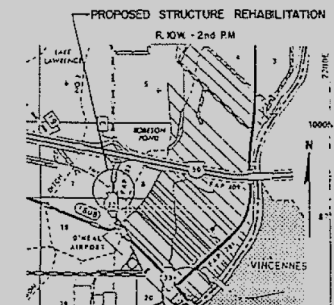
DESIGN SPECIFICATIONS

AASHTO (1989)
 1990 & 1991 INTERIM SPECIFICATIONS

DESIGN STRESSES

FIELD UNITS

f_c = 3,500 psi (concrete - prop. construction)
 f_y = 60,000 psi (reinforcement - prop. construction)
 f_y = 33,000 psi (exist. struct. steel)



LOCATION SKETCH

GENERAL NOTES

- FIELD WELDING OF CONSTRUCTION ACCESSORIES WILL NOT BE PERMITTED TO THE BOTTOM FLANGE OF BEAMS OR GIRDERS NOR TO THE TOP FLANGE FOR A DISTANCE EQUAL TO ONE-FOURTH THE SPAN LENGTH EACH WAY FROM THE PIER SUPPORTS. FIELD WELDING IN OTHER AREAS WILL BE PERMITTED ONLY WHEN APPROVED BY THE ENGINEER.
- THE MAIN LOAD CARRYING MEMBER COMPONENTS SUBJECT TO TENSILE STRESS SHALL CONFORM TO THE SUPPLEMENTAL REQUIREMENTS FOR NOTCH TOUGHNESS ZONE 2. THESE COMPONENTS ARE THE WIDE FLANGE BEAMS AND ALL SPLICE PLATE MATERIAL EXCEPT FILL PLATES.
- REINFORCEMENT BARS SHALL CONFORM TO THE REQUIREMENTS OF AASHTO M-31, M-42 OR M-53 GRADE 60.
- PLAN DIMENSIONS AND DETAILS RELATIVE TO EXISTING STRUCTURE HAVE BEEN TAKEN FROM EXISTING PLANS AND ARE SUBJECT TO NOMINAL CONSTRUCTION VARIATIONS. IT SHALL BE THE CONTRACTOR'S RESPONSIBILITY TO VERIFY SUCH DIMENSIONS AND DETAILS IN THE FIELD AND MAKE NECESSARY APPROVED ADJUSTMENT PRIOR TO CONSTRUCTION OR ORDERING OF MATERIALS. SUCH VARIATIONS SHALL NOT BE CAUSE FOR ADDITIONAL COMPENSATION FOR A CHANGE IN THE SCOPE OF THE WORK, HOWEVER, THE CONTRACTOR WILL BE PAID FOR THE QUANTITY ACTUALLY FURNISHED AT THE UNIT PRICE BID FOR THE WORK.
- SLOPE WALL SHALL BE REINFORCED WITH WELDED WIRE FABRIC, 6" X 8" - W4.0 X 4.0, WEIGHING 58 LBS. PER 100 SQ. FT.
- THE CONTRACTOR WILL BE REQUIRED TO MARK ON TOP OF THE CONCRETE DECK THE LOCATIONS OF THE TOP FLANGE OF ALL THE STEEL BEAMS, PRIOR TO ANY REMOVAL OF THE BRIDGE CONCRETE DECK. SAW CUTTING DIRECTLY OVER THE TOP OF THE BEAM FLANGES IS NOT PERMITTED.
- PRIOR TO POURING THE NEW CONCRETE FOR THE DECK, ALL LOOSE RUST, LOOSE MILL SCALE, AND ALL OTHER FOREIGN MATERIAL SHALL BE REMOVED FROM THE EMBEDDED PORTIONS OF FLANGES OF STRINGERS. THE REMOVAL SHALL BE ACCOMPLISHED IN ACCORDANCE WITH THE REQUIREMENTS OF THE SSPC SURFACE PREPARATION SPECIFICATIONS SP-11 FOR POWER TOOL CLEANING OR SP-2 FOR HAND TOOL CLEANING. COST SHALL BE INCIDENTAL TO CONCRETE REMOVAL.
- BRIDGE SEAT SEALER SHALL BE APPLIED TO SEAT AREA OF THE ABUTMENTS. ESTIMATED QUANTITY=180 SQ. FT.

TOTAL BILL OF MATERIAL

ITEM	UNIT	SUPER	SUB	TOTAL
REMOVAL OF EXISTING CONCRETE DECK	EACH	1		1
CONCRETE REMOVAL	CU YD		13.2	13.2
STRUCTURE EXCAVATION	CU YD		50	50
FLOOR DRAINS	EACH	12		12
NEOPRENE EXPANSION JOINT 2"	LN FT	90		90
CLASS X CONCRETE SUPERSTRUCTURE	CU YD	207.8		207.8
PROTECTIVE COAT	SQ YD	166		166
CLASS X CONCRETE	CU YD		20.4	20.4
JACK AND REPOSITION BEARINGS	EACH		12	12
REINFORCEMENT BARS, EPOXY COATED	POUND	49280	2320	51600
NAME PLATES	EACH	1		1
SLOPE WALL 4 INCH	SQ YD		88	88
BRIDGE SEAT SEALER	L SUM		1	1
BRIDGE DECK GROOVING	SQ YD	703		703
PERMANENT BENCH MARKS	EACH			1

⊗ TOP AND INSIDE FACES OF PARAPET ONLY

GENERAL PLAN
 F.A.P. ROUTE 783
 ILL. ROUTE 33
 OVER C.S.X. RAILROAD
 SECTION (1-2VB) BR
 LAWRENCE COUNTY
 STRUCTURE NO. 051-0032
 STA. 40+40.60

C9102.1

* EFFINGHAM, LAWRENCE, AND WABASH COUNTIES

MODEL: Default
 FILE: h:\p10\10000000.dwg
 PROJECT: 74440
 SHEET: 1 OF 10
 DATE: 10/27/2020

USER NAME	DESIGNED	REVISION
stefenmk	-	-
	DRAWN	REVISED
	CHECKED	REVISED
	DATE	REVISED

STATE OF ILLINOIS
 DEPARTMENT OF TRANSPORTATION

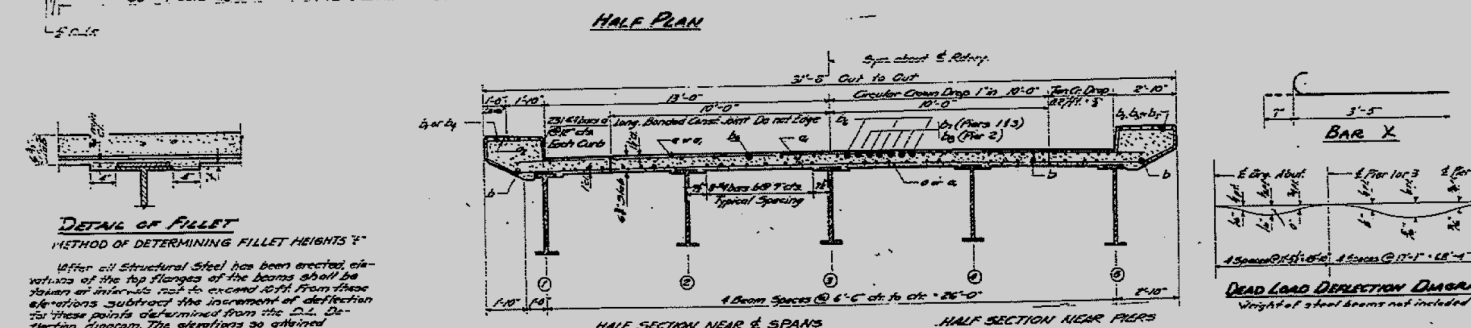
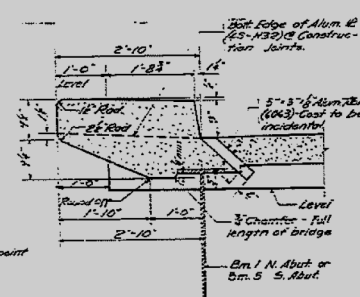
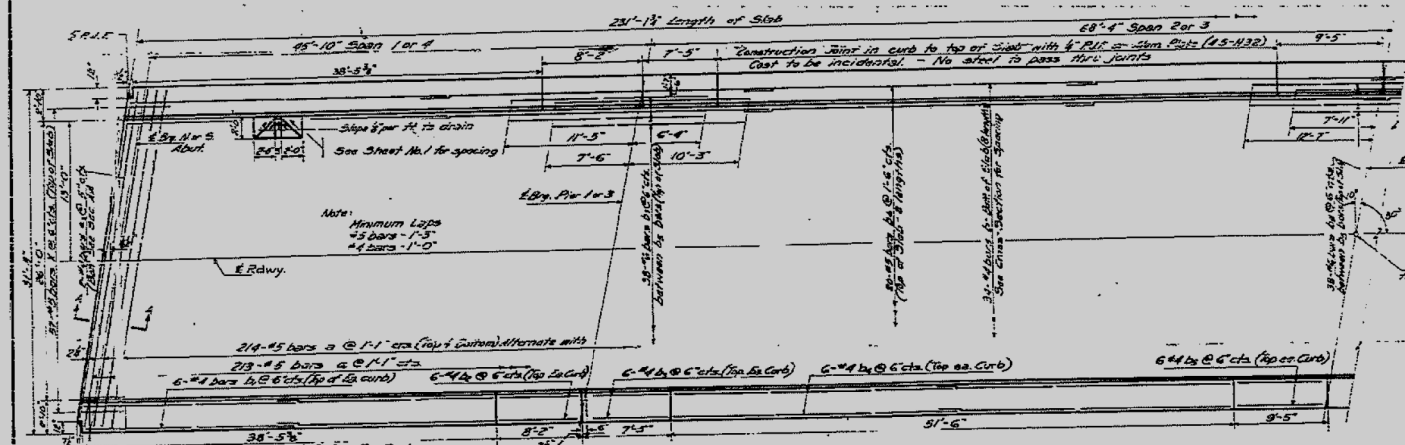
EXISTING STRUCTURE PLANS
 051-0032

SCALE: SHEET 1 OF 3 SHEETS STA. TO STA.

F.A. RTE.	SECTION	COUNTY	TOTAL SHEETS	SHEET NO.
VAR. D7	BRIDGE PAINTING 2021-2	*	23	11
CONTRACT NO. 74A40				
ILLINOIS FED. AID PROJECT				

STATE OF ILLINOIS
DEPARTMENT OF PUBLIC WORKS & BUILDINGS
DIVISION OF HIGHWAYS

DATE	REVISION	BY	NO.	SHEET NO.
8-25	Lawrence	34	17	8 SHEETS
*HS-2, HS-4, HS-8				



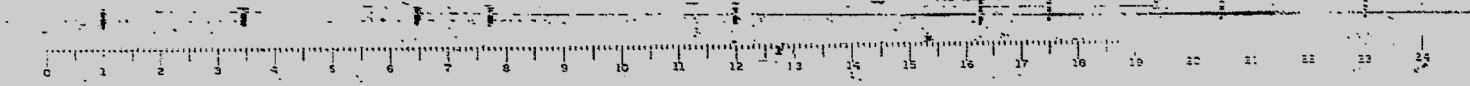
DETAIL OF FILLET
METHOD OF DETERMINING FILLET HEIGHTS
After all Structural Steel has been erected elevations of the top flanges of the beams shall be taken at intervals not to exceed 18\"/>

BILL OF MATERIAL - SUPERSTRUCTURE

BAR	NO.	SIZE	LENGTH	QTY
a	488	#5	22'-6"	
a	213	#5	34'-2"	
a	116	#4	25'-8"	
a	4	#4	24'-5"	
b	232	#4	30'-0"	
b	48	#4	19'-9"	
b	24	#4	7'-11"	
b	24	#4	7'-6"	
b	48	#4	22'-3"	
b	24	#4	9'-2"	
b	160	#3	30'-0"	
b	72	#6	17'-9"	
b	38	#6	20'-6"	
c	442	#6	1'-0"	
x	114	#5	4'-0"	

Class I Concrete	Cu. Yds.	124.2
Reinforcement Bars	Lbs.	26,830

DESIGNED: *Howard*
DRAWN: *B. Brown*
CHECKED: *J. B. B.*
APPROVED: *R. B. B.*



MODEL: Default
 FILE: h:\m\c\p\pub\barom\da\illink\poc\p\WDDOT\Documents\DOT_Offices\Illinet_7\Projects\74440\CADD\B\CAD\Sheet\SD74440-5-Struct.dwg

* EFFINGHAM, LAWRENCE, AND WABASH COUNTIES

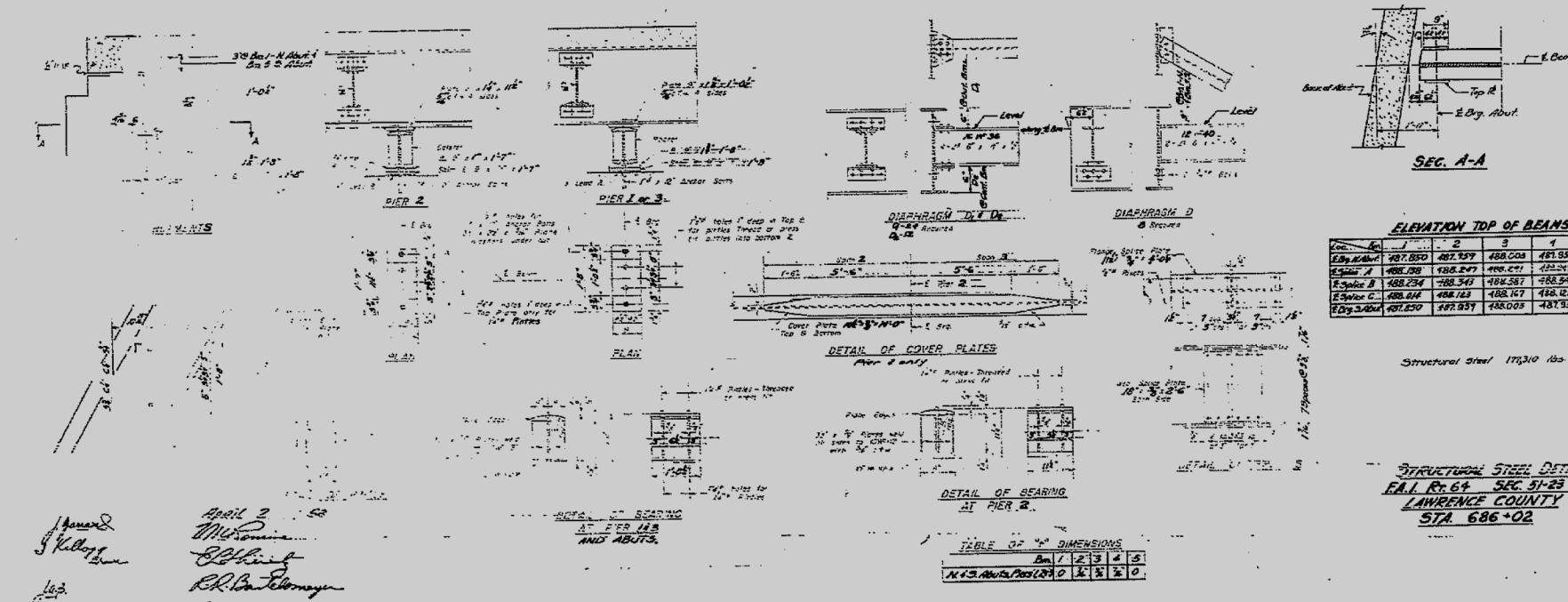
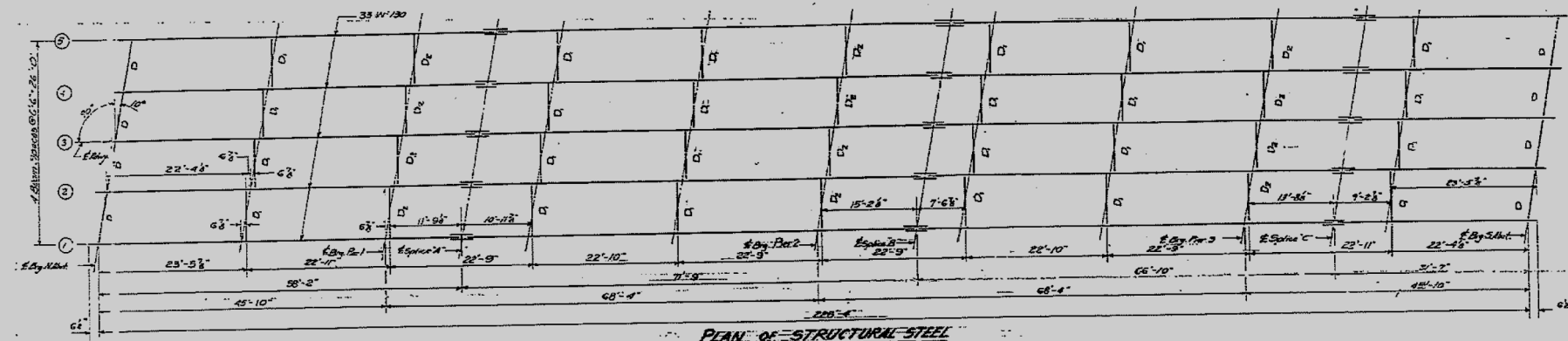
USER NAME = steffemk	DESIGNED -	REVISED -
	DRAWN -	REVISED -
PLOT SCALE = 100,0000' / in.	CHECKED -	REVISED -
PLOT DATE = 10/27/2020	DATE -	REVISED -

STATE OF ILLINOIS
DEPARTMENT OF TRANSPORTATION

EXISTING STRUCTURE PLANS
051-0047

SCALE: SHEET 2 OF 3 SHEETS STA. TO STA.

F.A. RTE.	SECTION	COUNTY	TOTAL SHEETS	SHEET NO.
VAR. D7 BRIDGE PAINTING 2021-2		*	23	15
			CONTRACT NO. 74A40	
		ILLINOIS	FED. AID PROJECT	



ELEVATION TOP OF BEAMS

Beam	1	2	3	4	5
E. By. Abut.	487.850	487.937	488.008	481.959	487.850
E. Spine A	488.008	488.247	488.427	482.947	488.008
E. Spine B	488.247	488.547	488.887	488.043	488.247
E. Spine C	488.427	488.783	489.167	488.023	488.427
E. By. Abut.	487.850	487.937	488.008	481.959	487.850

STRUCTURAL STEEL DETAILS
F.A. Rt. 64 SEC. 51-23 NB-4
LAWRENCE COUNTY
STA. 686+02

Approved
[Signature]
April 2, 1958
[Signature]
R.R. [Signature]

MODEL: Default
FILE: h:\mfc_p\pub\barcom\da\illinois\pww\DOT\Documents\DOT - Offices\Dir\et 7\Projects\7440\CADD\Drawings\CADD\Sheet\7440-5-Struct.dwg

* EFFINGHAM, LAWRENCE, AND WABASH COUNTIES

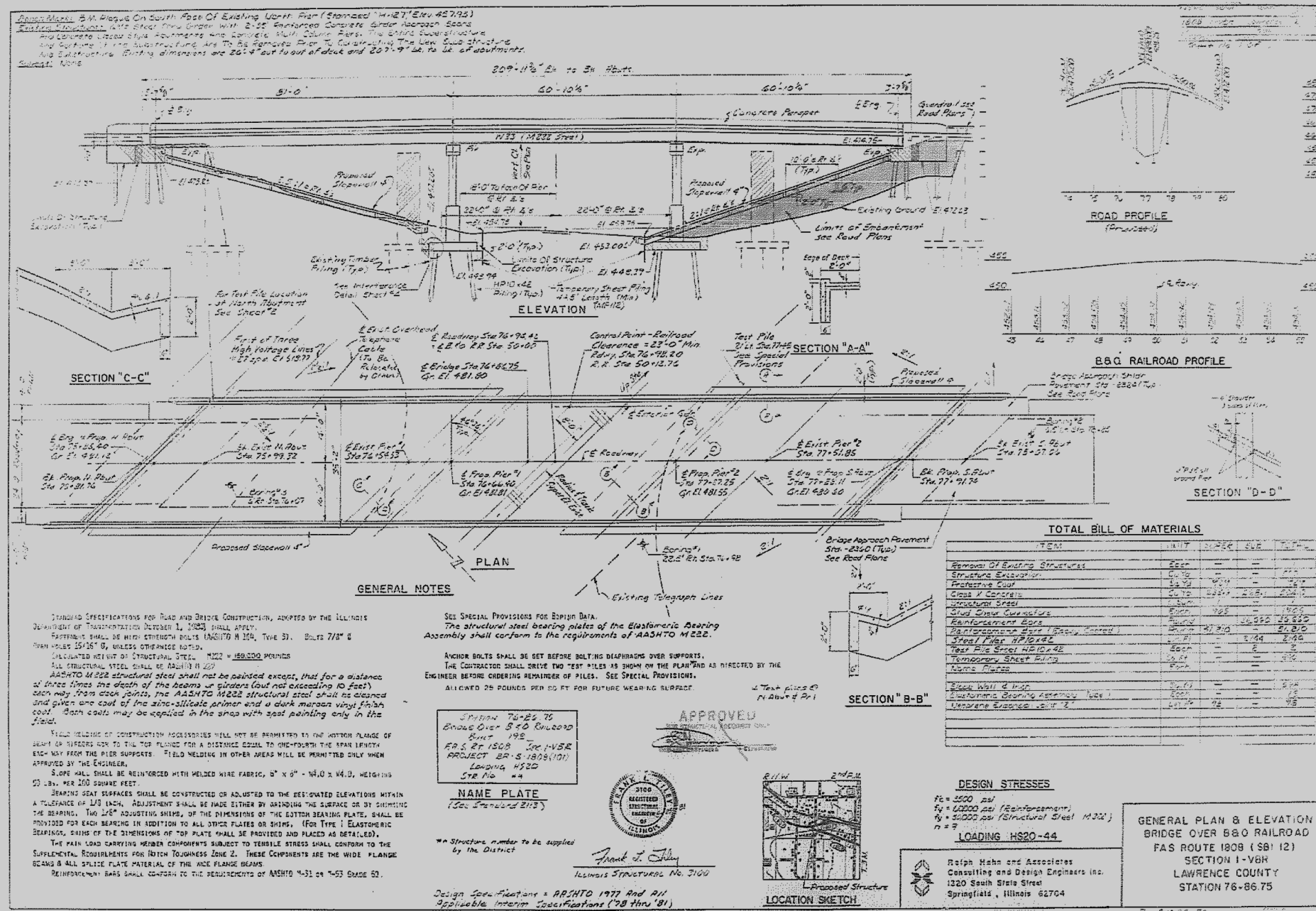
USER NAME = steffemk	DESIGNED -	REVISED -
	DRAWN -	REVISED -
PLOT SCALE = 100,0000' / in.	CHECKED -	REVISED -
PLOT DATE = 10/27/2020	DATE -	REVISED -

STATE OF ILLINOIS
DEPARTMENT OF TRANSPORTATION

EXISTING STRUCTURE PLANS
051-0047

SCALE: SHEET 3 OF 3 SHEETS STA. TO STA.

F.A. RTE.	SECTION	COUNTY	TOTAL SHEETS	SHEET NO.
VAR.	D7 BRIDGE PAINTING 2021-2	*	23	16
			CONTRACT NO. 74A40	
		ILLINOIS	FED. AID PROJECT	



GENERAL NOTES

STANDARD SPECIFICATIONS FOR ROAD AND BRIDGE CONSTRUCTION, ADOPTED BY THE ILLINOIS DEPARTMENT OF TRANSPORTATION OCTOBER 1, 1923 SHALL APPLY.

FABRICATED SHALL BE HIGH STRENGTH BOLTS (AASHTO A 308, TYPE 5). BOLTS 7/8" Ø UNLESS OTHERWISE NOTED.

CALCULATED WEIGHT OF STRUCTURAL STEEL = 150,000 POUNDS

ALL STRUCTURAL STEEL SHALL BE A36 (A 36) IN 1921

AASHTO M 222 STRUCTURAL STEEL SHALL NOT BE PAINTED EXCEPT, THAT FOR A DISTANCE OF THREE TIMES THE DEPTH OF THE BEAMS OR GIRDERS (NOT EXCEEDING 10 FEET) EACH WAY FROM JOINTS, THE AASHTO M 222 STRUCTURAL STEEL SHALL BE CLEANED AND GIVEN ONE COAT OF ZINC-SILICATE PRIMER AND A DARK MAROON VINYL FINISH COAT. BOTH COATS MAY BE APPLIED IN THE SHOP WITH ZINC PAINTING ONLY IN THE FIELD.

FIELD WELDING OF CONSTRUCTION ACCESSORIES WILL NOT BE PERMITTED IN THE WITHIN FLANGE OF BEAM OR GIRDERS UNLESS TO THE TOP FLANGE FOR A DISTANCE EQUAL TO ONE-FOURTH THE SPAN LENGTH EACH WAY FROM THE PIER SUPPORTS. FIELD WELDING IN OTHER AREAS WILL BE PERMITTED ONLY WHEN APPROVED BY THE ENGINEER.

SPHERE SHALL BE REINFORCED WITH WELDED WIRE FABRIC, 6" X 6" X 4.0 X 4.0, WEIGHTS 50 LB. PER 100 SQUARE FEET.

BEARING SURFACES SHALL BE CONSTRUCTED OR ADJUSTED TO THE SPECIFIED ELEVATIONS WITHIN A TOLERANCE OF 1/8 INCH. ADJUSTMENT SHALL BE MADE EITHER BY GRINDING THE SURFACE OR BY SHIMMING THE BEARING. TWO 1/8" ADJUSTING SHIMS, OF THE DIMENSIONS OF THE BOTTOM BEARING PLATE, SHALL BE PROVIDED FOR EACH BEARING IN ADDITION TO ALL OTHER PLATES OR SHIMS. (FOR TYPE I ELASTOMERIC BEARINGS, SHIMS OF THE DIMENSIONS OF TOP PLATE SHALL BE PROVIDED AND PLACED AS DETAILED).

THE MAIN LOAD CARRYING MEMBER COMPONENTS SUBJECT TO TENSILE STRESS SHALL CONFORM TO THE SUPPLEMENTAL REQUIREMENTS FOR TENSION TOLERANCES LINE 2. THESE COMPONENTS ARE THE WIDE FLANGE BEAMS & ALL SPlice PLATE MATERIAL OF THE WIDE FLANGE BEAMS.

REINFORCEMENT BARS SHALL CONFORM TO THE REQUIREMENTS OF AASHTO M-31 OR M-53 GRADE 50.

ANCHOR BOLTS SHALL BE SET BEFORE BOLTING DIAPHRAGMS OVER SUPPORTS. THE CONTRACTOR SHALL ORIENT TWO TEST PILES AS SHOWN ON THE PLAN AND AS DIRECTED BY THE ENGINEER BEFORE ORDERING REMAINDER OF PILES. SEE SPECIAL PROVISIONS.

ALLOWED 25 POUNDS PER SQ YD FOR FUTURE WEARING SURFACE.

SEE SPECIAL PROVISIONS FOR REPAIR DATA.

The structural steel bearing plates of the Elastomeric Bearing Assembly shall conform to the requirements of AASHTO M 222.

ANCHOR BOLTS SHALL BE SET BEFORE BOLTING DIAPHRAGMS OVER SUPPORTS. THE CONTRACTOR SHALL ORIENT TWO TEST PILES AS SHOWN ON THE PLAN AND AS DIRECTED BY THE ENGINEER BEFORE ORDERING REMAINDER OF PILES. SEE SPECIAL PROVISIONS.

DESIGN STRESSES

$F_y = 3500 \text{ psi}$
 $F_y = 50000 \text{ psi}$ (Reinforcement)
 $F_y = 50000 \text{ psi}$ (Structural Steel M 222)
 $n = 2$

LOADING HS20-44

Ralph Hahn and Associates
 Consulting and Design Engineers Inc.
 1320 South State Street
 Springfield, Illinois 62704

APPROVED
 STATE ENGINEER
 ILLINOIS

3100 REGISTERED
 STRUCTURAL
 ENGINEER
 ILLINOIS

Frank J. Kelly
 ILLINOIS STRUCTURAL NO. 3100

Design Specifications = AASHTO 1977 And A 11
 Applicable Interior Specifications (70 thru 81)

NAME PLATE
 (See Specification 215)

STATION 76+86.75
 BRIDGE OVER B&O RAILROAD
 BUILT 1928
 P.S. 27-1508 (R-N/SR)
 PROJECT BR-S-1826(10)
 LOADING HS20
 SFR No. 44

NO STRUCTURE NUMBER TO BE SUPPLIED BY THE DISTRICT

LOCATION SKETCH

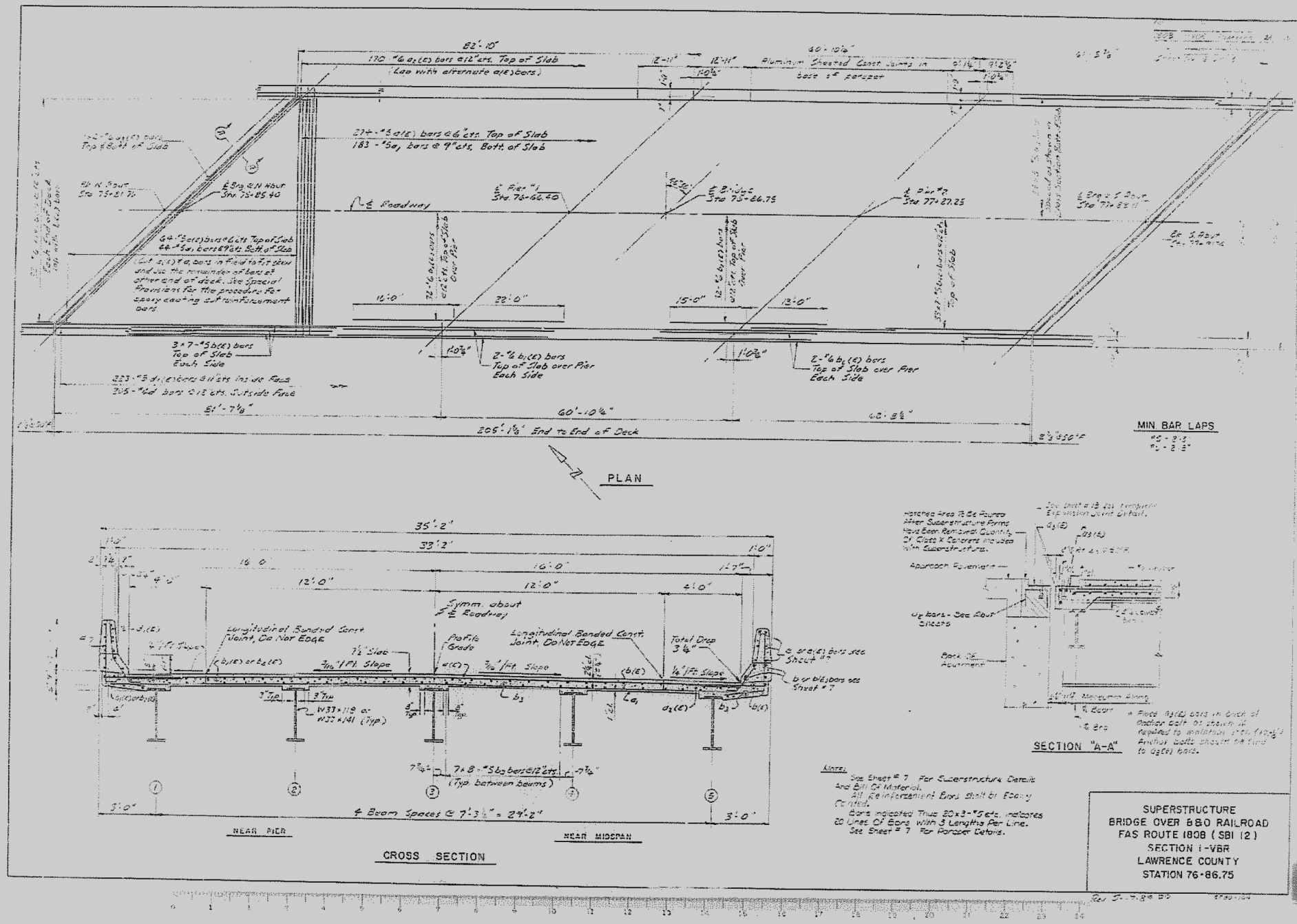
TOTAL BILL OF MATERIALS

ITEM	UNIT	AMOUNT	SIZE	PRICE
Removal of Existing Structures	SSC			
Structure Excavation	Cu Yd			
Protective Coat	Sq Yd			
Grade II Concrete	Sq Yd			
Structural Steel	Lbs			
Steel Girder Components	Each			
Reinforcement Bars	Lbs			
Reinforcement Bars (Bench, Curved)	Lbs			
Steel Plates	Sq Yd			
Test Pile Steel	Lbs			
Temporary Sheet Piling	Sq Yd			
Name Plates	Each			
Steel Wall & Top	Sq Yd			
Elastomeric Bearing Assembly (Type I)	Each			
Welding Expenses	Lbs			

**GENERAL PLAN & ELEVATION
 BRIDGE OVER B&O RAILROAD
 PAS ROUTE 1808 (SR 12)
 SECTION I-VBR
 LAWRENCE COUNTY
 STATION 76+86.75**

BAD COPY

MODEL: Default
 FILE: \\nas01c.psu.edu\pubshare\room.dad\illinois.gov\PI\DOT\Documents\DOT_Offices\District 7\Projects\74440\CADD\Drawings\74440-SB-Plan.dgn



SUPERSTRUCTURE BRIDGE OVER B&O RAILROAD
 FAS ROUTE 1808 (SBI 12)
 SECTION 1-VBR
 LAWRENCE COUNTY
 STATION 76+86.75

* EFFINGHAM, LAWRENCE, AND WABASH COUNTIES

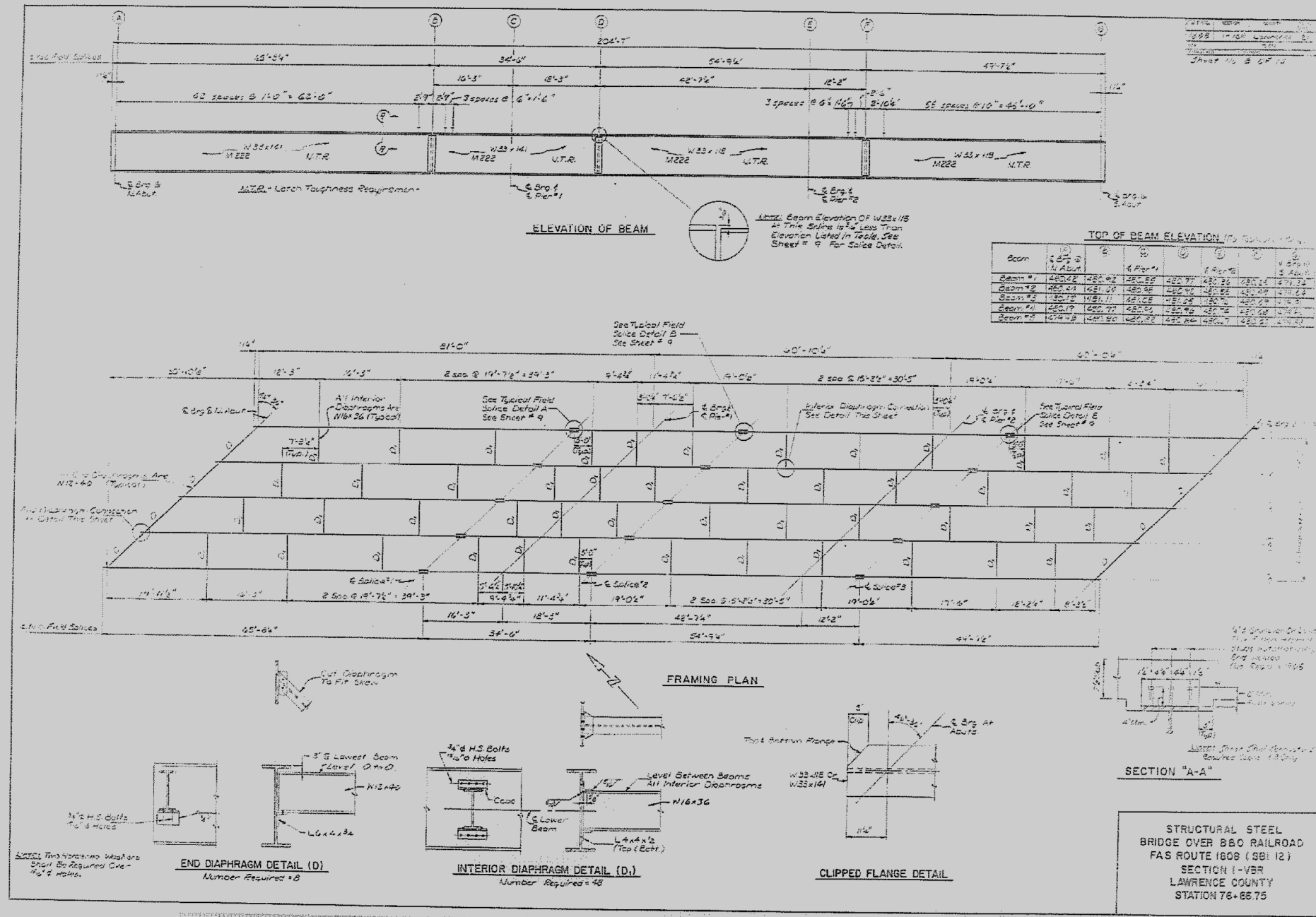
USER NAME = steffemk	DESIGNED -	REVISED -
	DRAWN -	REVISED -
PLOT SCALE = 100,0000' / in.	CHECKED -	REVISED -
PLOT DATE = 10/27/2020	DATE -	REVISED -

**STATE OF ILLINOIS
 DEPARTMENT OF TRANSPORTATION**

**EXISTING STRUCTURE PLANS
 051-0057**

SCALE: SHEET 2 OF 3 SHEETS STA. TO STA.

F.A. RTE.	SECTION	COUNTY	TOTAL SHEETS	SHEET NO.
VAR.	D7 BRIDGE PAINTING 2021-2	*	23	18
				CONTRACT NO. 74A40
		ILLINOIS	FED. AID PROJECT	



Beam #	A	B	C	D	E	F	G
Beam #1	453.22	453.42	453.55	453.77	453.83	453.94	454.12
Beam #2	453.24	453.27	453.35	453.45	453.55	453.65	453.75
Beam #3	453.27	453.17	453.08	452.98	452.88	452.78	452.68
Beam #4	453.17	452.77	452.55	452.45	452.35	452.25	452.15
Beam #5	453.12	453.10	453.17	453.25	453.35	453.45	453.55

STRUCTURAL STEEL
BRIDGE OVER B&O RAILROAD
FAS ROUTE 1608 (SB 12)
SECTION I-VBR
LAWRENCE COUNTY
STATION 76+86.75

STATE OF ILLINOIS
DEPARTMENT OF TRANSPORTATION

EXISTING STRUCTURE PLANS
051-0057

* EFFINGHAM, LAWRENCE, AND WABASH COUNTIES	
F.A. RTE.	SECTION
VAR. D7 BRIDGE PAINTING 2021-2	COUNTY
	TOTAL SHEETS
	23
	SHEET NO. 19
CONTRACT NO. 74A40	
ILLINOIS	FED. AID PROJECT

USER NAME = steffemk	DESIGNED -	REVISED -
PLOT SCALE = 100,0000' / in.	DRAWN -	REVISED -
PLOT DATE = 10/27/2020	CHECKED -	REVISED -
	DATE -	REVISED -

SCALE: SHEET 3 OF 3 SHEETS STA. TO STA.

STATE OF ILLINOIS
DEPARTMENT OF TRANSPORTATION

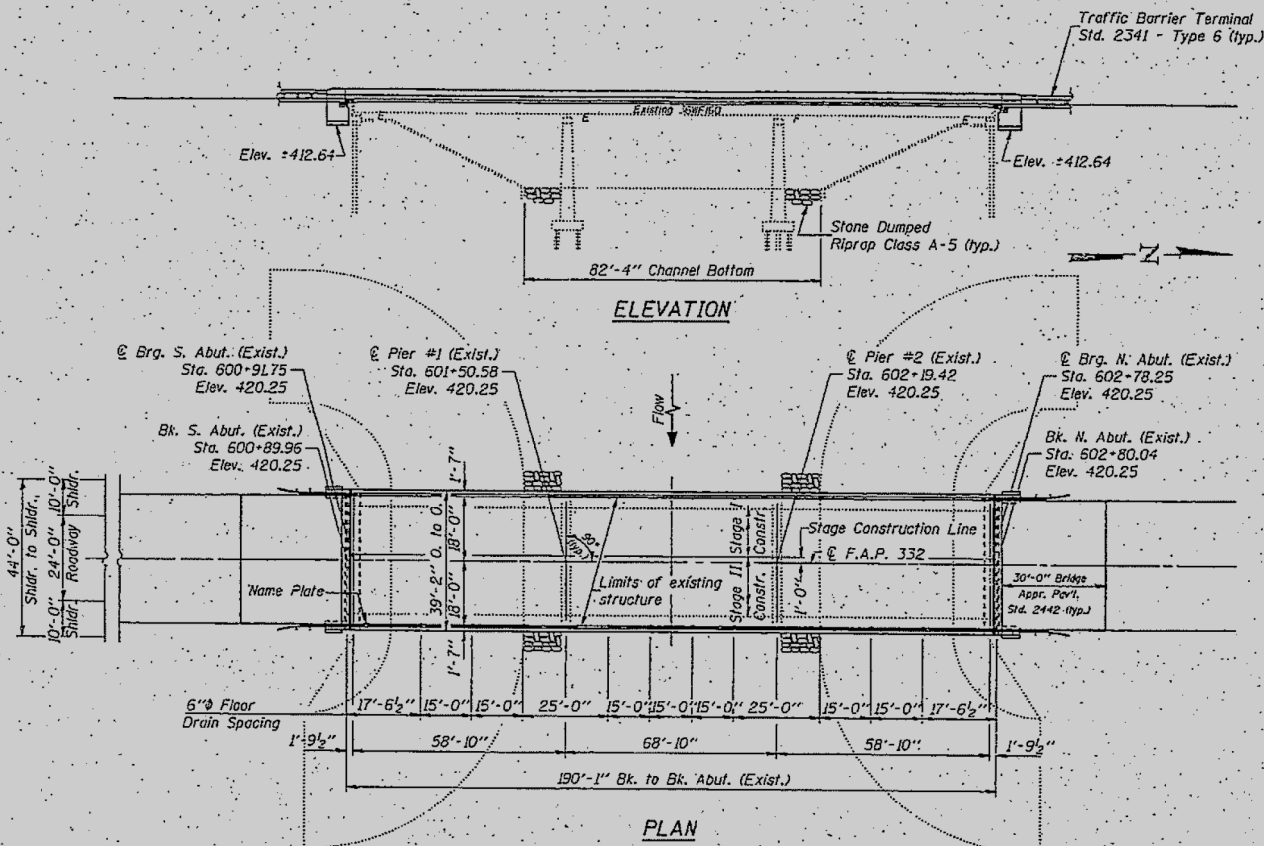
PROJECT NO.	SECTION	COUNTY	SHEET NO.	TOTAL SHEETS
F.A.P. 332	13B-2(B)	WABASH	23	5

SHEET NO. 1
OF 5 SHEETS

Bench Mark: Chiseled "a" on N.E. wingwall of S.N. 093-0001 Elev. 423.36

Existing Structure: SN 093-0001, FAP 332, Section 13B-2(F)-2 Sta. 601+85. Built in 1956, as a three span 190'-1" bk.-bk. abutments, 35'-8" out to out, 1-beam bridge with open abutments and solid piers both supported on piles. One alternating lane of traffic is to be maintained during the rehabilitation by utilizing stage construction.

No salvage



GENERAL NOTES

Fasteners shall be high strength bolts. Bolts $\frac{1}{2}$ " dia, open holes $\frac{5}{16}$ " dia, unless otherwise noted.
Anchor bolts shall be set before bolting diaphragms over supports.
Reinforcement bars shall conform to the requirements of AASHTO M-31, M-42 or M-53 Grade 60.
Layout of scour protection system may be varied in the field to suit ground conditions as directed by the Engineer.
Plan dimensions and details relative to existing structure have been taken from existing plans and are subject to nominal construction variations. It shall be the Contractor's responsibility to verify such dimensions and details in the field and make necessary approved adjustments prior to construction or ordering of materials. Such variations shall not be cause for additional compensation for a change in the scope of the work, however, the Contractor will be paid for the quantity actually furnished at the unit prices bid for the work.
Field welding of construction accessories will not be permitted to the bottom flange of beams nor to the top flange for a distance equal to one-fourth the span length each way from the pier supports. Field welding in other areas will be permitted only when approved by the Engineer.
Two $\frac{1}{2}$ " adjusting shims, of the dimension of the bottom bearing plate, shall be provided for each bearing in addition to all other plates or shims. For Type I Elastomeric Bearings, shims of the dimensions of the top plate shall be provided as detailed.
Cleaning and painting of the existing structural steel shall be as specified in the Special Provision for "Cleaning and Painting Existing Steel Structures". All existing structural steel within 5 feet of either side of expansion joints shall be cleaned by Method 1. All remaining existing structural steel shall be cleaned by Method 2. The Lead and Chromate Free Alkyd Paint System shall be used for painting of existing structural steel. The prime and intermediate coats shall be applied as specified in the special provision, followed by a spot final finish coat over all newly primed steel surfaces. The color of the final finish coat shall be Interstate Green, Munsell No. 7.5 G 4/8.
The Zinc-Silicate / Acrylic / Acrylic Paint System shall be used for shop and field painting of new structural steel, except where otherwise noted. The color of the acrylic finish coat shall be Interstate Green, Munsell No. 7.5 G 4/8. See Special Provisions for "Cleaning and Painting Metal Structures".

TOTAL BILL OF MATERIAL

ITEM	UNIT	SUPER	SUB	TOTAL
Concrete Removal	Cu. Yds.	12.0		12.0
Structural Steel Removal	Lbs.	3037		3037
Structure Excavation	Cu. Yds.		144	144
Removal of Existing Concrete Deck	Each	1		1
Flour Drains	Each	20		20
Preformed Joint Seal 2 1/2"	Foot	39		39
Preformed Joint Seal 4"	Foot	39		39
Concrete Superstructure	Cu. Yds.	224.8		224.8
Concrete Structures	Cu. Yds.		35.5	35.5
Elastomeric Bearing Assembly Type I	Each	12		12
Elastomeric Bearing Assembly Type II	Each	6		6
Structural Steel	Lbs.	9560		9560
Stud Shear Connectors	Each	3288		3288
Reinforcement Bars, Epoxy Coated	Lbs.	53000	4620	57620
Name Plates	Each	1		1
Stone Dumped Riprap Class A5	Ton		138	138
Cleaning and Painting Steel Bridge	L. S.	1		1
Bridge Deck Grooving	Sq. Yds.	709		709
Jack and Remove Existing Bearings	Each	18		18
Protective Coat	Sq. Yds.	172		172
Power Tool Cleaning Residue Containment and Disposal	L. S.	1		1
Blasting Residue Containment and Disposal	L. S.	1		1
Bar Splicers	Each	573	8	581

*Quantity is for top and inside surface of parapet.

GENERAL PLAN
ILLINOIS RTE. 1 OVER
RACCOON CREEK
F.A.P. RTE. 332 - SEC. (13B-2)BR
WABASH COUNTY
STATION 601+85.00
STRUCTURE NO. 093-0001

LOADING HS20-44
Allow 25#/sq. ft. for future wearing surface.

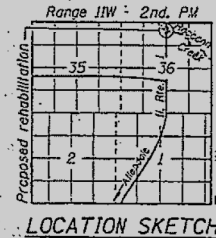
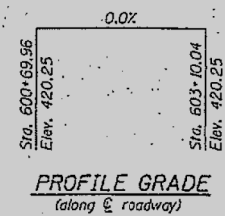
DESIGN SPECIFICATIONS
1992 AASHTO, 1993 & 1994 Interims
& Seismic Retrofitting Guidelines for Highway Bridges

DESIGN STRESSES
Proposed $f_c = 3,500$ psi
 $f_y = 60,000$ psi (reinforcement)
Existing $f_s = 18,000$ psi (struct.)
New $f_s = 20,000$ psi (M270 Gr. 36)

SEISMIC DATA
Seismic Performance Category (SPC) = B
Bedrock Acceleration Coefficient (A) = 0.091g
Site Coefficient (S) = 1.2

STATION 601+85.00
REBUILT BY
STATE OF ILLINOIS
F.A.P. RT. 332 SEC. (13B-2)BR
LOADING HS20
STR. NO. 093-0001
NAME PLATE
See Std. 2113

Note: Existing Name Plates to be cleaned and relocated next to the new Name Plate. Cost incidental to "Name Plates".



DESIGNED BY [Signature]
CHECKED John Ciccone
DRAWN r.b. carbonell
CHECKED JLC

EXAMINED [Signature]
PASSED [Signature]



EXPIRES 11-30-96

STATE OF ILLINOIS
DEPARTMENT OF TRANSPORTATION

EXISTING STRUCTURE PLANS
093-0001

USER NAME	DESIGNED	REVISED
= stefhenk	-	-
	DRAWN	REVISED
	CHECKED	REVISED
	DATE	REVISED

SCALE: SHEET 1 OF 3 SHEETS STA. TO STA.

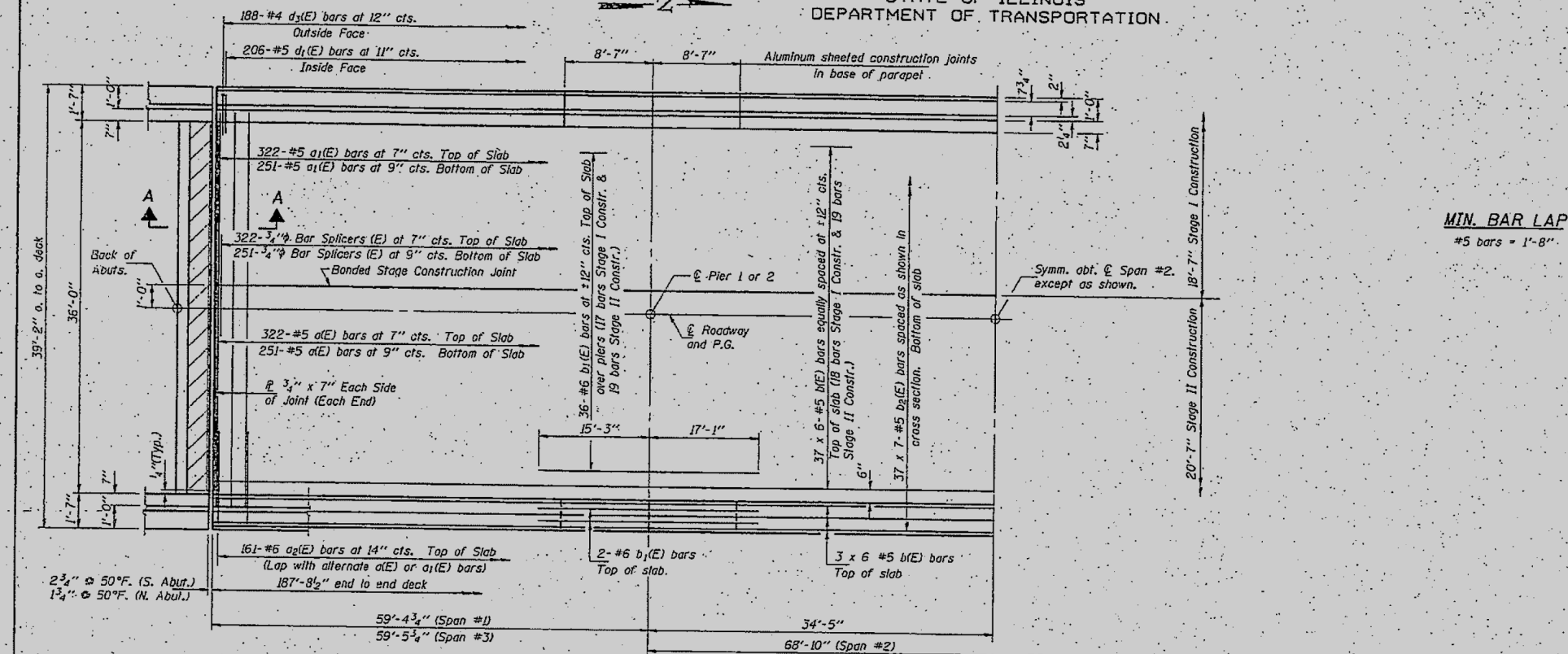
F.A. RTE.	SECTION	COUNTY	TOTAL SHEETS	SHEET NO.
VAR.	D7 BRIDGE PAINTING 2021-2	*	23	20
CONTRACT NO. 74A40				
ILLINOIS FED. AID PROJECT				

* EFFINGHAM, LAWRENCE, AND WABASH COUNTIES

STATE OF ILLINOIS
DEPARTMENT OF TRANSPORTATION

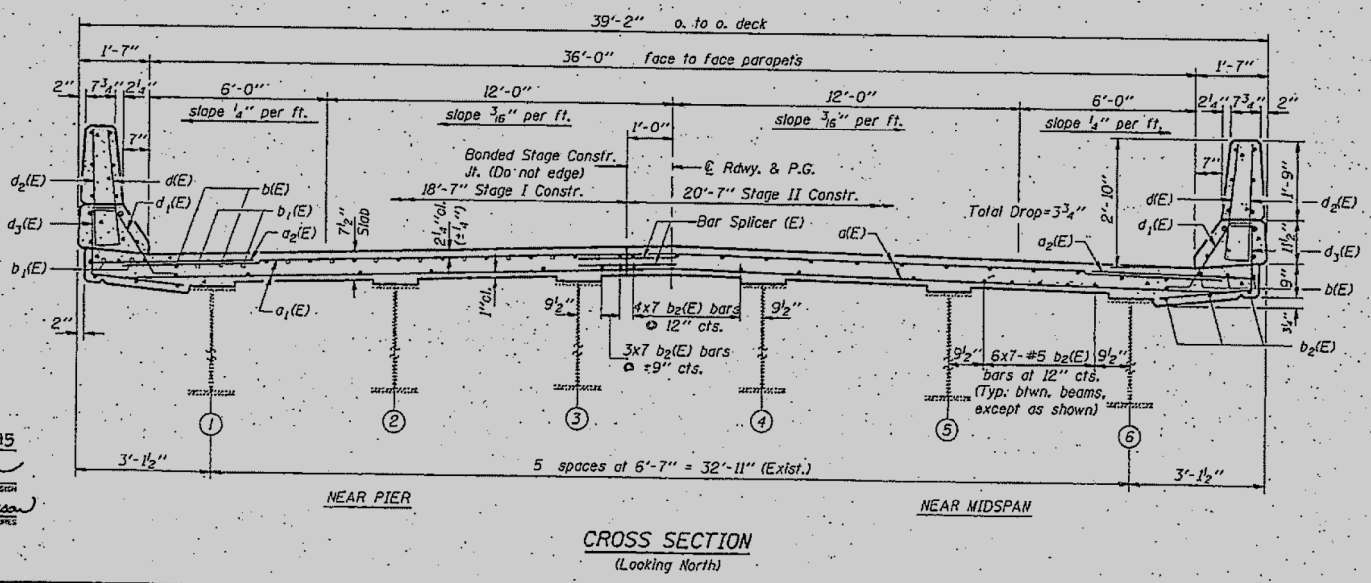
PROJECT NO.	SECTION	COUNTY	TOTAL SHEETS	SHEET NO.
F.A.P. 232	02A-218A	WABASH	23	11
FED. AID PROJ. NO.	ROUTE	FED. AID PROJECT		

SHEET NO. 7
19 SHEETS



MIN. BAR LAP
#5 bars = 1'-8"

Note: Hatched area to be poured after superstructure forms have been removed. Quantity of concrete to be included with "Concrete Superstructure".



Notes: See sheets #8 & #9 of 19 for superstructure details. Parapet reinforcement and Bill of Material. Reinforcement bars designated (E) shall be epoxy coated. Bars indicated thus 20 x 3-#5 etc. indicates 20 lines of bars with 3 lengths per line. For Bar Splicer details see sheet #6 of 19. For Sec. A-A see sheet #9 of 19. For drain locations see sheet #1 of 19.

DESIGNED	<i>[Signature]</i>	January 5, 1995
CHECKED	<i>[Signature]</i>	EXAMINED <i>[Signature]</i>
DRAWN	r.b. carbonell	DESIGNED BY <i>[Signature]</i>
CHECKED	JLC YFK	PASSED <i>[Signature]</i>
S-1-0 12-31-87		

SUPERSTRUCTURE
F.A.P. RTE. 332 - SEC. (13B-2)BR
WABASH COUNTY
STATION 601+85.00

MODEL: Default
FILE: \\sbs\p\pub\baron\m.d\illinois\p\WIDDOT\Documents\IBDOT\Office\Drawings\7\Projects\74440\CADD\Drawings\CADD\Sheet\74440-S-1-0.dwg

* EFFINGHAM, LAWRENCE, AND WABASH COUNTIES

USER NAME = steffenk	DESIGNED -	REVISED -
	DRAWN -	REVISED -
PLOT SCALE = 100.0000' / in.	CHECKED -	REVISED -
PLOT DATE = 10/27/2020	DATE -	REVISED -

STATE OF ILLINOIS
DEPARTMENT OF TRANSPORTATION

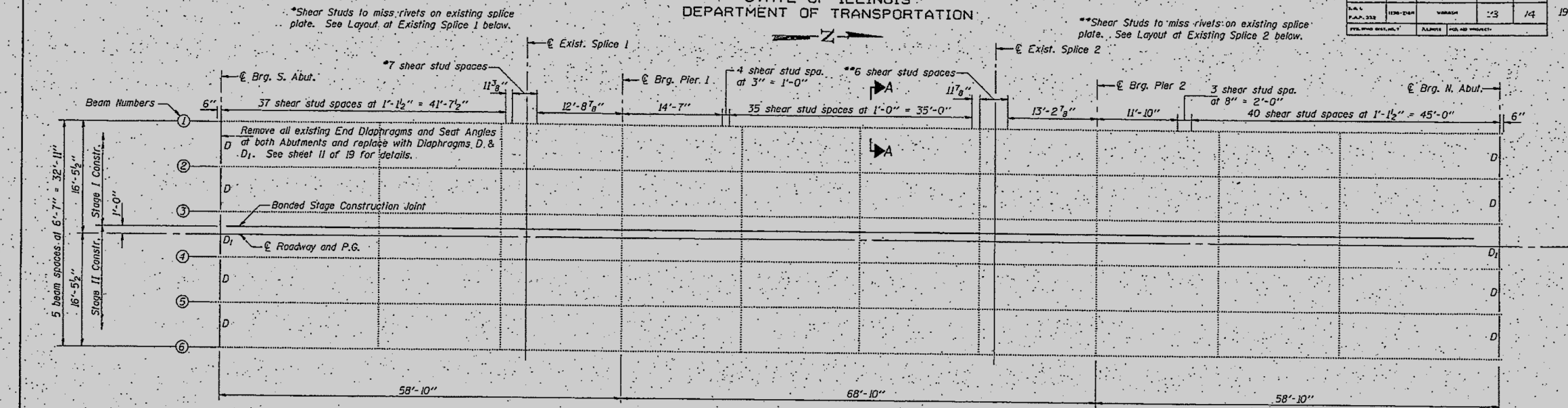
EXISTING STRUCTURE PLANS
093-0001

SCALE: SHEET 2 OF 3 SHEETS STA. TO STA.

F.A. RTE.	SECTION	COUNTY	TOTAL SHEETS	SHEET NO.
VAR. D7 BRIDGE PAINTING 2021-2			23	21
CONTRACT NO. 74A40				
ILLINOIS FED. AID PROJECT				

STATE OF ILLINOIS
DEPARTMENT OF TRANSPORTATION

PROJECT NO.	SECTION	DATE	SCALE	SHEET
F.A.P. 332	13B-218R	WABASH	1/3	14
SHEET NO. 10 19 SHEETS				

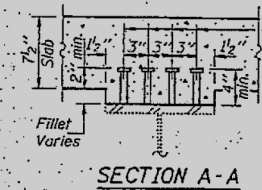


*Shear Studs to miss rivets on existing splice plate. See Layout at Existing Splice 1 below.

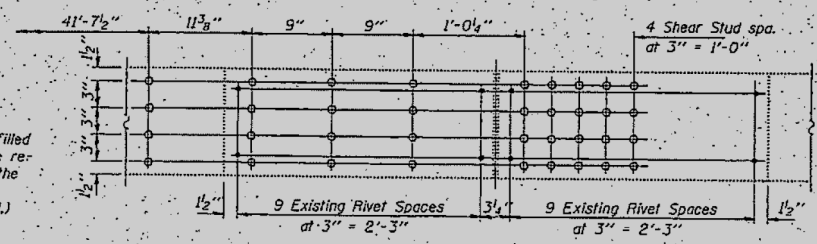
**Shear Studs to miss rivets on existing splice plate. See Layout at Existing Splice 2 below.

All existing beams are 36 WF 160

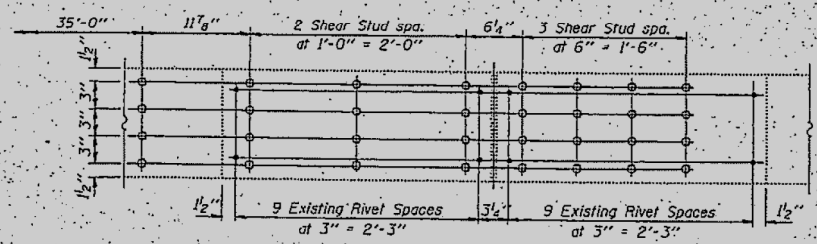
PLAN



3/4" Granular or solid flux filled headed studs conforming to the requirements of Art. 706.32 of the Std. Spec's. Automatically end welded to flange. (3288 Req'd.)



LAYOUT AT EXISTING SPLICE 1



LAYOUT AT EXISTING SPLICE 2

	Abuts.	Piers
R ₁	18.4	58.0
R ₂	35.3	43.4
Imp.	9.6	11.5
R (Total)	63.3	112.9

I_s and S_s are the moment of inertia and section modulus of the steel section used in computing f_s (Total). I_{com}, I_{com} and S_{com} are the moment of inertia and section modulus of the composite section used in computing f_s (Total). VR is the maximum Live Load + Impact shear range in span.

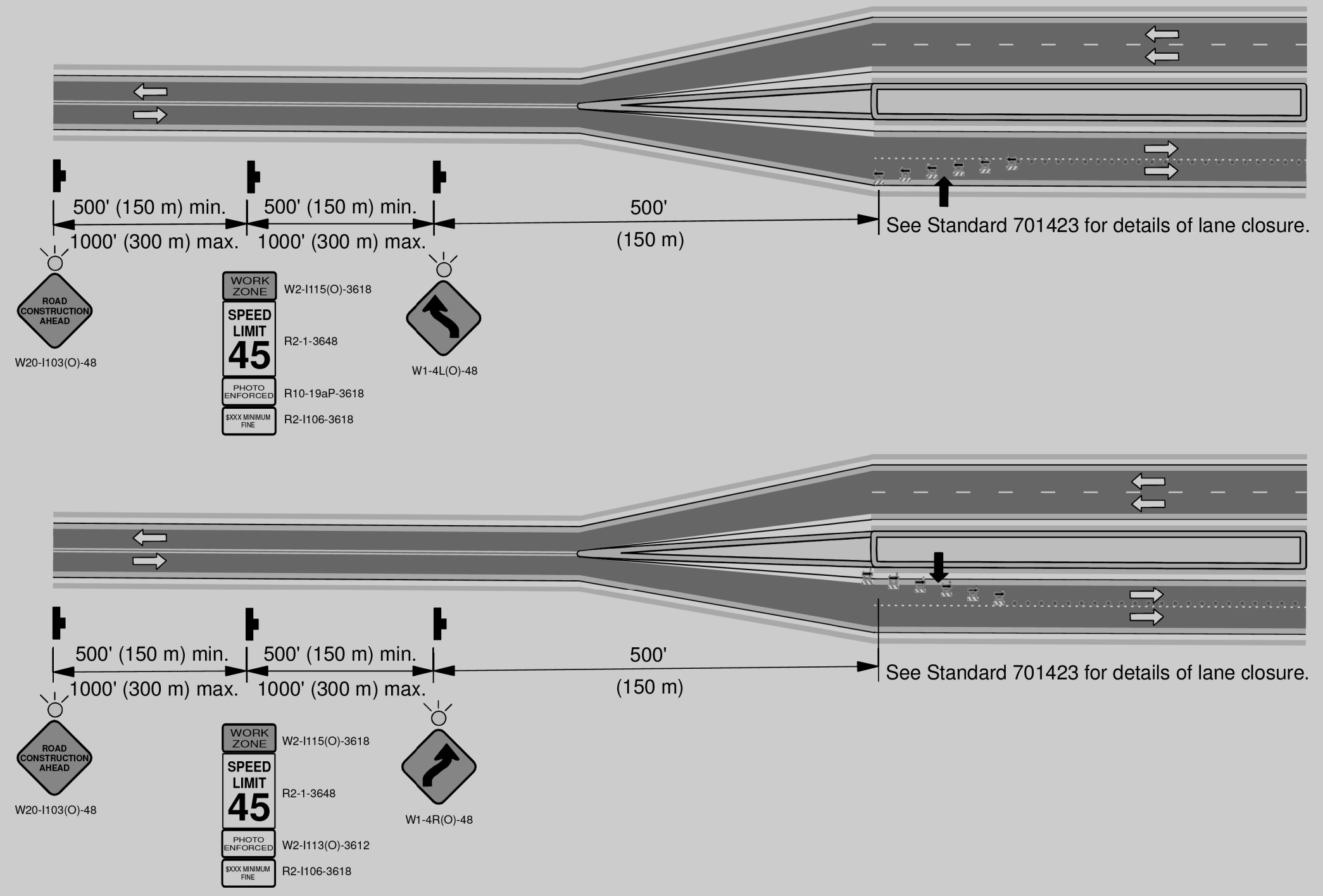
	0.4 Sp.#1 & 0.6 Sp.#3	Piers #1 & #2	0.5 Sp.#2
I _s	9750	9750	9750
I _c (n)	23659		23659
I _c (3n)	17290		17290
S _s	542	542	542
S _c (n)	763		763
S _c (3n)	688		688
I _{com}	0.819	1.12	0.819
M ₁	206.3	432.7	150.4
f _s (non-comp) (k.s.i.)	4.6	9.6	3.3
s ₂	0.301		0.301
M _s	85.8		80.2
f _s (comp) (k.s.i.)	1.5		1.4
M (Imp)	402.2	229.2	407.9
M (Imp)	109.4	60.8	105.2
f _s (M ₁ +M ₂) (k.s.i.)	8.0	6.4	8.1
f _s (Total)	14.1	16.0	12.8
VR	48.7		48.7

DESIGNED: [Signature] January 5, 1995
 CHECKED: John Ciumm
 DRAWN: r.b. carbonell
 CHECKED: JLC RFR
 EXAMINED: [Signature]
 PASSED: [Signature]

STRUCTURAL STEEL DETAILS
F.A.P. RTE. 332 - SEC. (13B-2)BR
WABASH COUNTY
STATION 601+85.00

MODEL: Default
FILE: \\p:\pub\baron\m.d\illinois\p\WIDOT\Documents\DOT - Offices\Dirlet - 7\Projects\74440\CADD\Drawings\CADD\Drawings\74440-5-Struct.dwg

* EFFINGHAM, LAWRENCE, AND WABASH COUNTIES



MODEL: Default
 FILE: Model: 20200808.ctb
 PROJECT: 74440
 OFFICE: District 7
 PROJECT: 74440
 CAD: sheets\074440-eb-ctb-01.dgn

USER NAME = steffemk	DESIGNED -	REVISED -
	DRAWN -	REVISED -
PLOT SCALE = 100,0000' / in.	CHECKED -	REVISED -
PLOT DATE = 10/27/2020	DATE -	REVISED -

STATE OF ILLINOIS
DEPARTMENT OF TRANSPORTATION

TRAFFIC CONTROL
051-0047 EB SIDE

SCALE: SHEET OF SHEETS STA. TO STA.

* EFFINGHAM, LAWRENCE, AND WABASH COUNTIES				
F.A. RTE.	SECTION	COUNTY	TOTAL SHEETS	SHEET NO.
VAR.	D7 BRIDGE PAINTING 2021-2	*	23	23
			CONTRACT NO. 74A40	
		ILLINOIS	FED. AID PROJECT	