

01-15-2021 LETTING ITEM 167

STATE OF ILLINOIS
DEPARTMENT OF TRANSPORTATION

F.A. RTE.	SECTION	COUNTY	TOTAL SHEETS	SHEET NO.
341	2020-063-I	COOK	28	1
ILLINOIS			CONTRACT NO. 62L41	

*28 + 2 = 30. TOTAL SHEETS

D-91-462-20

FOR INDEX OF SHEETS, SEE SHEET NO. 2

TRAFFIC DATA

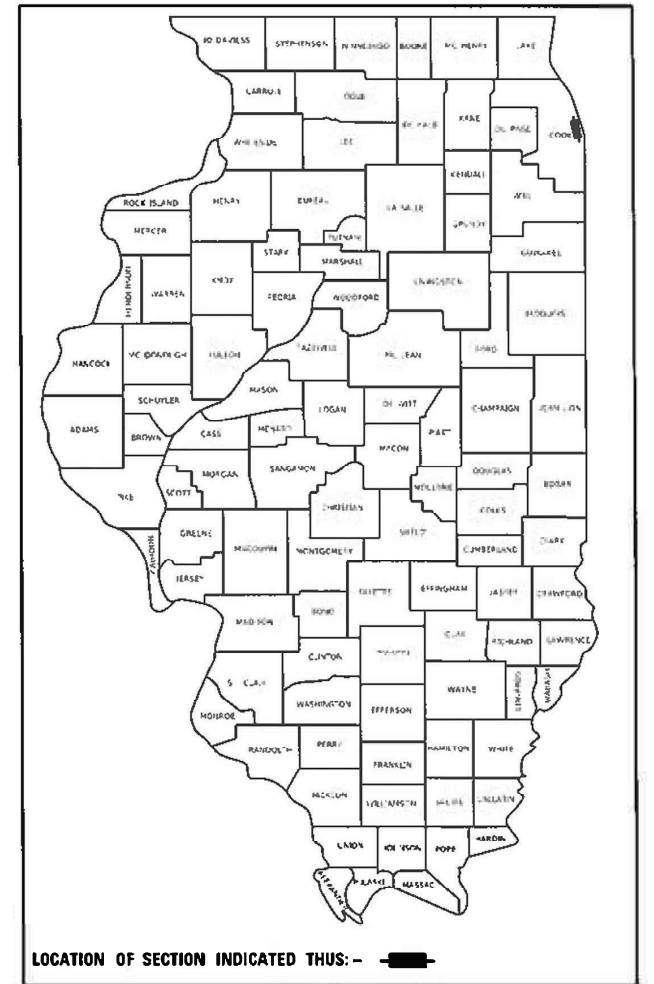
ADT (2019) = 108,200
POSTED SPEED LIMIT = 45 MPH

IMPROVEMENTS ARE LOCATED
IN THE CITY OF CHICAGO

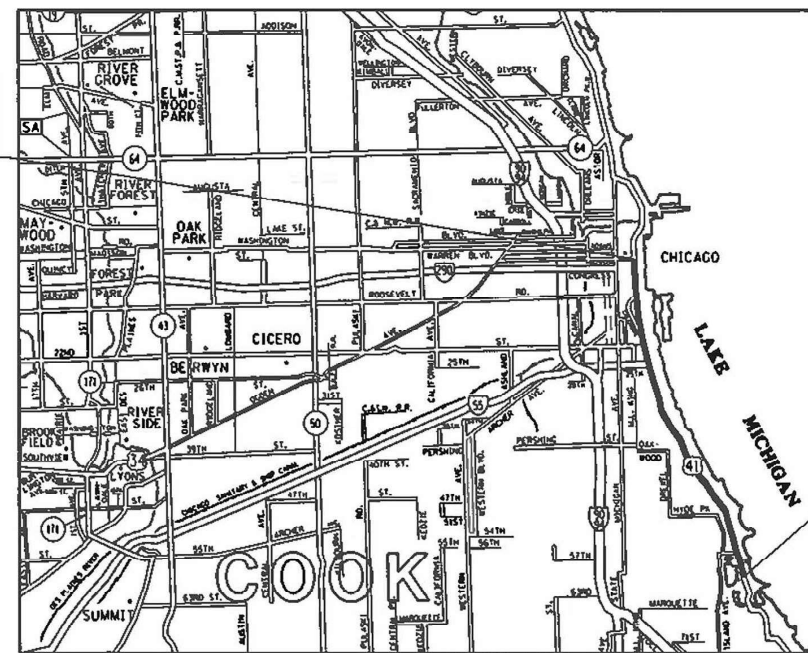
PROPOSED HIGHWAY PLANS

FEDERAL PROJECT: NHPP-A4EP (881)
FAP ROUTE 341: US 41 (LAKESHORE DRIVE)
FROM BALBO DRIVE TO 57TH DRIVE
SECTION: 2020-063-I
CRACK AND JOINT SEALING
COOK COUNTY

C-91-260-20

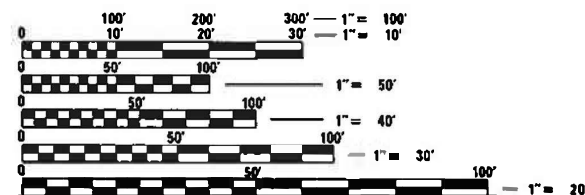


PROJECT ENDS:
STATION 344 + 44.06



PROJECT BEGINS:
STATION 10 + 00

CHICAGO TOWNSHIP



FULL SIZE PLANS HAVE BEEN PREPARED USING STANDARD ENGINEERING SCALES. REDUCED SIZED PLANS WILL NOT CONFORM TO STANDARD SCALES. IN MAKING MEASUREMENTS ON REDUCED PLANS, THE ABOVE SCALES MAY BE USED.

C.U.A.N
CHICAGO UTILITY ALERT NETWORK
1-312-744-7000

PROJECT MANAGER: ALAIN MIDY (847) 221-3056

GROSS LENGTH = 32,736 FT. = 6.2 MILES
NET LENGTH = 32,736 FT. = 6.2 MILES

CONTRACT NO. 62L41

STATE OF ILLINOIS
DEPARTMENT OF TRANSPORTATION

SUBMITTED June 23, 2020

Anthony J. Quigley REGIONAL ENGINEER

October 2, 2020

Scott A. Elk
ENGINEER OF DESIGN AND ENVIRONMENT

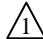
October 2, 2020

Osman, Jim
DIRECTOR OF HIGHWAYS PROJECT IMPLEMENTATION

PRINTED BY THE AUTHORITY
OF THE STATE OF ILLINOIS

INDEX OF SHEETS

SHEET NO.	DESCRIPTION
1	TITLE SHEET
2	INDEX OF SHEETS, HIGHWAY STANDARDS, AND GENERAL NOTES
3	SUMMARY OF QUANTITIES
4-8	TYPICAL SECTIONS
* 9-20	PROPOSED PLANS AND PAVEMENT MARKING PLANS
21	ENTRANCE AND EXIT RAMP CLOSURE DETAILS (TC-08)
21A	SINGLE LANE WEAVE AND MULTI-LANE WEAVE (TC-09)
22	TRAFFIC CONTROL AND PROTECTION FOR SIDE ROADS, INTERSECTIONS, AND DRIVEWAYS (TC-10)
23	TRAFFIC CONTROL AND PROTECTION AT TURN BAYS (TC-14)
24	TRAFFIC CONTROL DETAILS FOR FREEWAY SHOULDER CLOSURES AND PARTIAL RAMP CLOSURES (TC-17)
25	ARTERIAL ROAD INFORMATION SIGN (TC-22)
26-28	CITY OF CHICAGO TYPICAL PAVEMENT MARKINGS (TC-24)

* 20A SHEET ADDED HERE 

STATE HIGHWAY STANDARDS

STANDARD NO.	DESCRIPTION
442101-09	CLASS B PATCHES
701101-05	OFF-ROAD OPERATIONS, MULTILANE, 15' TO 24" FROM PAVEMENT EDGE
701106-02	OFF-ROAD OPERATIONS, >15' AWAY
701400-10	APPROACH TO LANE CLOSURE, FREEWAY/EXPRESSWAY
701401-12	LANE CLOSURE, FREEWAY/EXPRESSWAY
701411-09	LANE CLOSURE, MULTILANE, AT ENTRANCE OR EXIT RAMP, FOR SPEED > 45MPH
701428-01	TRAFFIC CONTROL SETUP & REMOVAL FREEWAY/EXPRESSWAY
701446-11	TWO LANE CLOSURE FREEWAY/EXPRESSWAY
701601-09	URBAN LANE CLOSURE, MULTILANE, 1W OR 2W WITH NON TRAVERSABLE MEDIAN
701701-10	URBAN SINGLE LANE CLOSURE, MULTILANE INTERSECTION
701801-06	SIDEWALK, CORNER OR CROSSWALK CLOSURE
701901-08	TRAFFIC CONTROL DEVICES

GENERAL NOTES

- BEFORE STARTING ANY EXCAVATION, THE CONTRACTOR SHALL CALL "C.U.A.N." AT (312) 744-7000 OR 811 FOR FIELD LOCATIONS OF BURIED ELECTRIC, TELEPHONE AND GAS UTILITIES. 48 HOUR NOTIFICATION IS REQUIRED.
- THE CONTRACTOR SHALL COORDINATE CONSTRUCTION ACTIVITIES WITH UTILITY COMPANIES, AND THE CITY OF CHICAGO.
- THE CONTRACTOR WILL NOT BE ALLOWED TO SET UP A YARD OR FIELD OFFICE ON STATE PROPERTY WITHOUT WRITTEN PERMISSION FROM THE DEPARTMENT.
- ALL DAMAGE TO EXISTING PAVEMENT MARKINGS OR RAISED REFLECTIVE PAVEMENT MARKERS OUTSIDE THE REMOVAL LINE SHOWN ON THE PLANS SHALL BE REPLACED AT NO ADDITIONAL COST TO THE DEPARTMENT.
- IT SHALL BE THE CONTRACTOR'S RESPONSIBILITY TO VERIFY ALL DIMENSIONS AND CONDITIONS EXISTING IN THE FIELD PRIOR TO CONSTRUCTION AND ORDERING OF MATERIALS.
- BEFORE BEGINNING ANY WORK, THE CONTRACTOR SHALL RETAIN AND RECORD FOR FUTURE REFERENCE, ALL EXISTING PAVEMENT MARKING LINES (AND RAISED REFLECTIVE PAVEMENT MARKERS) IN ORDER THAT THESE LOCATIONS CAN BE RE-ESTABLISHED FOR STRIPING. EXACT LOCATIONS OF ALL PAVEMENT MARKINGS SHALL BE AS DIRECTED BY THE ENGINEER.
- THE CONTRACTOR SHALL CONTACT THE DISTRICT ONE TRAFFIC CONTROL SUPERVISOR AT KALPANA.KANNAN-HOSADURGA@ILLINOIS.GOV A MINIMUM OF 72 HOURS IN ADVANCE OF BEGINNING WORK.
- THE CONTRACTOR SHALL BE REQUIRED TO PROVIDE ACCESS TO ABUTTING PROPERTY AT ALL TIMES DURING THE CONSTRUCTION OF THIS PROJECT.

MODEL: Default
FILE NAME: P:\uplanroom.dat\illinois.gov\PHWDOT\Documents\DOT_Offices\District_1\Project\ID146270\CADD\Design\ID146270-sht-cover.dgn

 REVISED SHEET 1/6/2021

REV-SEP

USER NAME = somooi	DESIGNED -	REVISED -
	DRAWN -	REVISED -
PLOT SCALE = 100.0000' / in.	CHECKED -	REVISED -
PLOT DATE = 9/21/2020	DATE -	REVISED -

**STATE OF ILLINOIS
DEPARTMENT OF TRANSPORTATION**

**INDEX OF SHEETS, HIGHWAY STANDARDS, AND GENERAL NOTES
U.S. ROUTE 41 (LAKE SHORE DRIVE) (BALBO DRIVE TO 57TH DRIVE)**

SCALE: SHEET OF SHEETS STA. TO STA.

F.A. RTE.	SECTION	COUNTY	TOTAL SHEETS	SHEET NO.
341	2020-063-I	COOK	28	2
			CONTRACT NO. 62L41	
		ILLINOIS FED. AID PROJECT		

