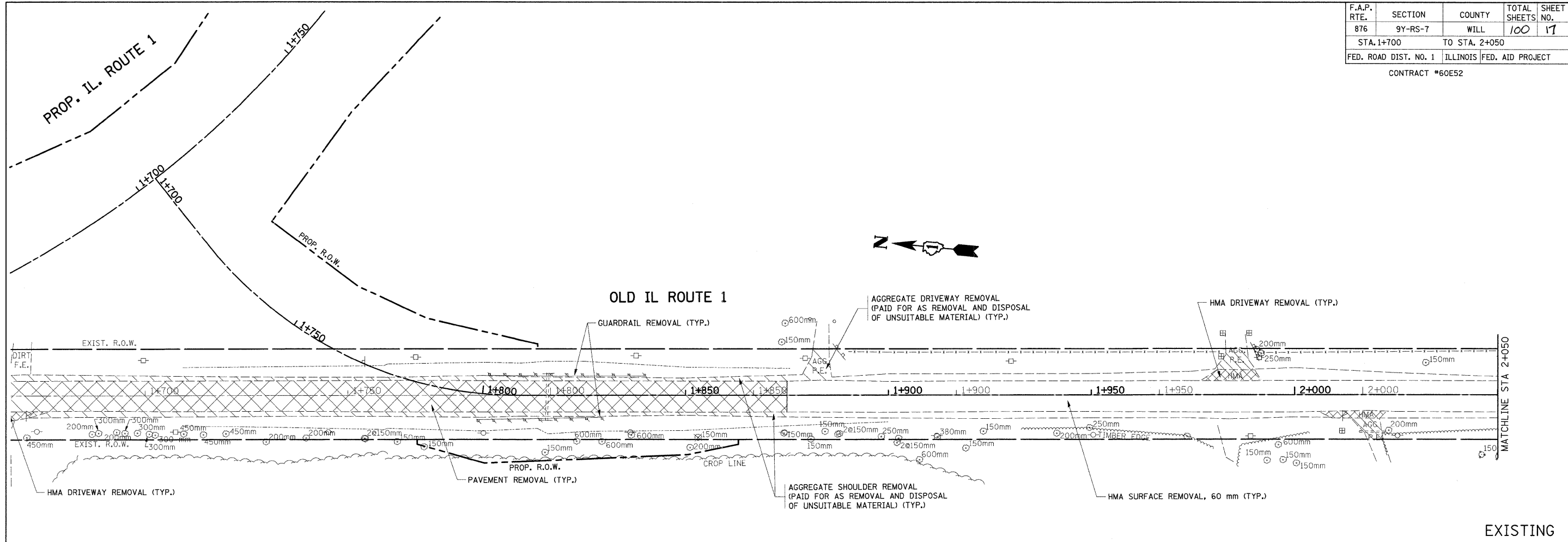
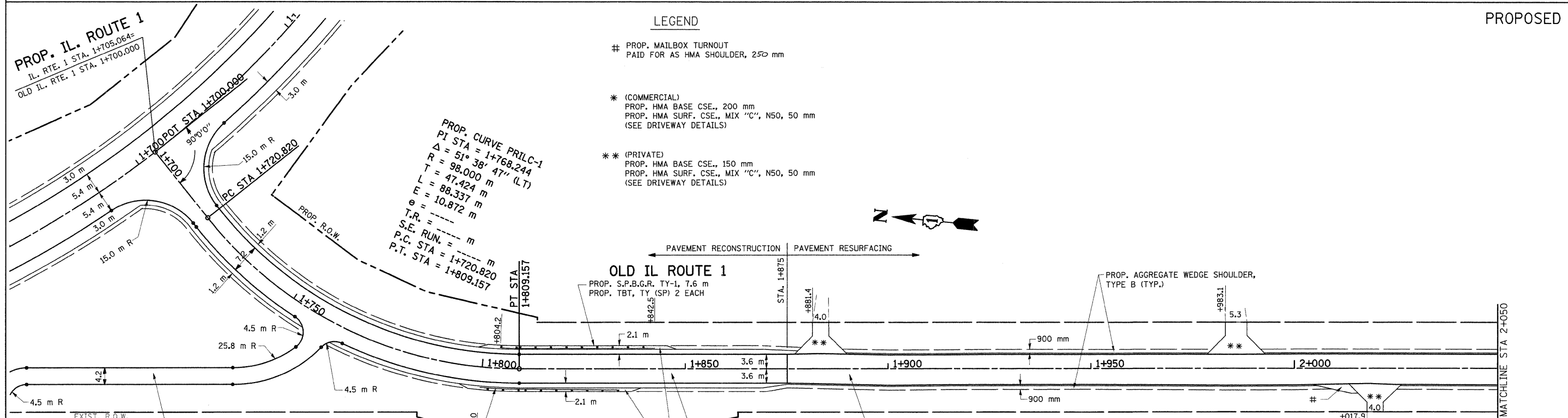


F.A.P. RTE.	SECTION	COUNTY	TOTAL SHEETS	SHEET NO.
876	9Y-RS-7	WILL	100	17
STA. 1+700		TO STA. 2+050		
FED. ROAD DIST. NO. 1		ILLINOIS		FED. AID PROJECT

CONTRACT #60E52



EXISTING



PROPOSED

LEGEND

- # PROP. MAILBOX TURNOUT  
PAID FOR AS HMA SHOULDER, 250 mm
- \* (COMMERCIAL)  
PROP. HMA BASE CSE., 200 mm  
PROP. HMA SURF. CSE., MIX "C", N50, 50 mm  
(SEE DRIVEWAY DETAILS)
- \*\* (PRIVATE)  
PROP. HMA BASE CSE., 150 mm  
PROP. HMA SURF. CSE., MIX "C", N50, 50 mm  
(SEE DRIVEWAY DETAILS)

REVISIONS	
NAME	DATE

ILLINOIS DEPARTMENT OF TRANSPORTATION  
**IL. ROUTE 1  
EXISTING AND PROPOSED  
ROADWAY PLAN**

SCALE 1:500  
DATE 8/28/2008

DRAWN BY  
CHECKED BY