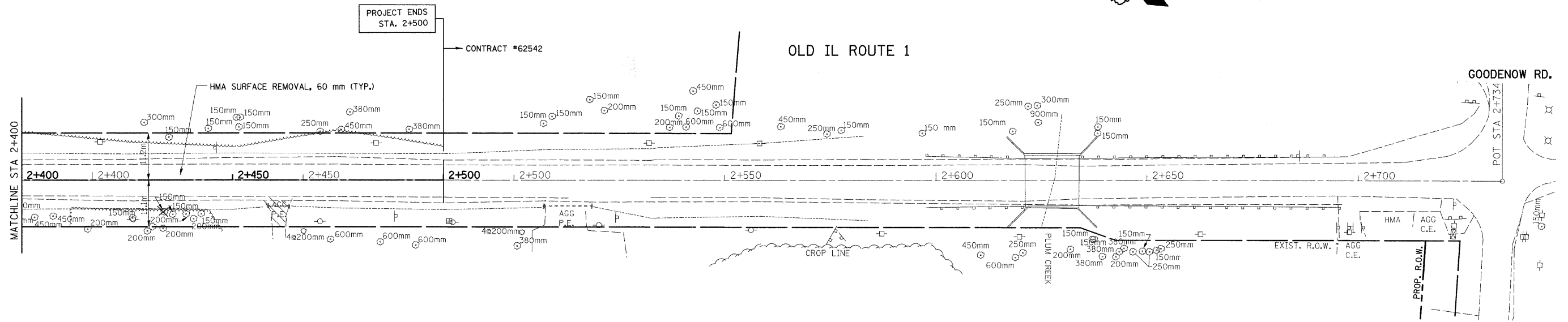
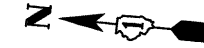


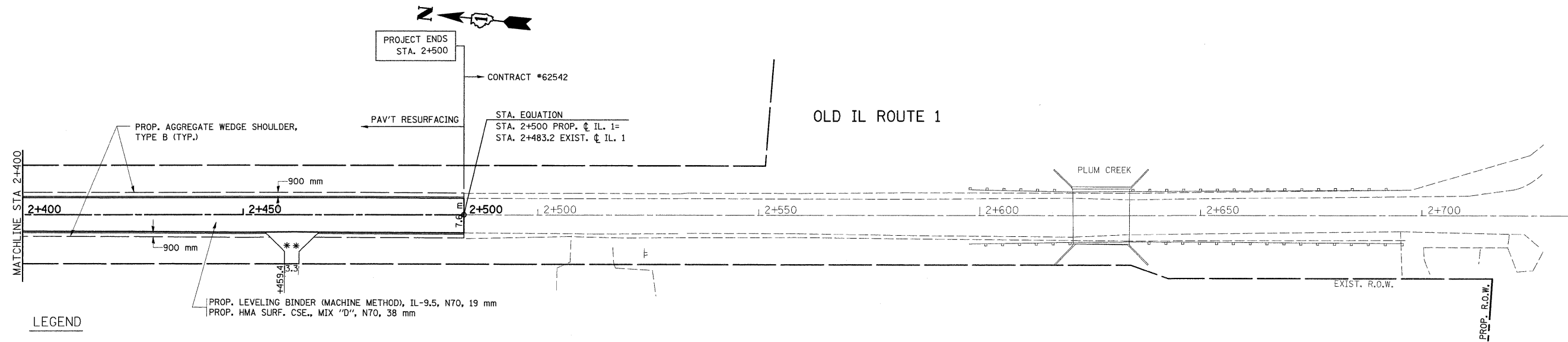
F.A.P. RTE.	SECTION	COUNTY	TOTAL SHEETS	SHEET NO.
876	9Y-RS-7	WILL	100	19
STA. 2+400 TO STA. 2+619				
FED. ROAD DIST. NO. 1		ILLINOIS	FED. AID PROJECT	

CONTRACT #60E52



EXISTING

PROPOSED



LEGEND

PROP. MAILBOX TURNOUT
PAID FOR AS HMA SHOULDER, 250 mm

* (COMMERCIAL)
PROP. HMA BASE CSE., 200 mm
PROP. HMA SURF. CSE., MIX "C", N50, 50 mm
(SEE DRIVEWAY DETAILS)

** (PRIVATE)
PROP. HMA BASE CSE., 150 mm
PROP. HMA SURF. CSE., MIX "C", N50, 50 mm
(SEE DRIVEWAY DETAILS)

REVISIONS	
NAME	DATE

ILLINOIS DEPARTMENT OF TRANSPORTATION
**IL. ROUTE 1
EXISTING AND PROPOSED
ROADWAY PLAN**
SCALE 1:500
DATE 8/28/2008
DRAWN BY
CHECKED BY